

# Parkland Acquisition Partners

California State Parks welcomes the assistance of land conservation organizations to acquire and preserve new park lands. The following is a representative sampling of Parkland Acquisition Partners and is not purported to be a complete list.

• American Land Conservancy	81
• American River Conservancy	82
• Anza-Borrego Foundation and Institute	83
• Big Sur Land Trust	84
• Bolsa Chica Land Trust	85
• California Rangeland Trust	86
• Cayucos Land Conservancy	87
• Elkhorn Slough Foundation	88
• Foundation for Small Wilderness Area Preservation, Los Osos/ Morro Bay Chapter	89
• Hills for Everyone	90
• Lake County Land Trust	91
• Land Conservancy of San Luis Obispo County	92
• LandPaths	93
• Land Trust for Santa Barbara County	94
• The Land Trust of Napa County	95
• Mendocino Land Trust	96
• Middle Mountain Foundation	97
• Northcoast Regional Land Trust	98
• Packard Foundation	99
• Peninsula Open Space Trust	100
• Riverside Land Conservancy	101
• Sacramento Valley Conservancy	102
• Sanctuary Forest, Inc.	103
• Santa Monica Mountains Trails Council	104
• Save Mount Diablo	105

- Save the Redwoods League 106
- Sempervirens Fund 107
- Sequoia Challenge 108
- Small Wilderness Area Preservation, Inc. 109
- Sonoma Land Trust 110
- The Archaeological Conservancy 111
- The Nature Conservancy 112
- The Trust for Public Land 113
- Truckee Donner Land Trust 114
- Wildlands Conservancy 115
- Yucaipa Valley Conservancy 116

# American Land Conservancy

## Projects and Programs

Founded in 1990, the American Land Conservancy (ALC) is a private, non-profit land trust dedicated to conserving the landscapes that represent the very best of our ecological, scenic, recreational, cultural and agricultural resources. Through land acquisition, conservation easements and land exchanges, ALC has conserved 195,000 acres through 332 projects across the country. ALC values collaboration and works in partnership with willing private landowners, communities, public resource agencies, foundations, industry groups and non-profit organizations.

The mission of the American Land Conservancy is to conserve landscapes that represent the very best of our ecological, scenic, recreational, cultural, and agricultural resources.

## Benefits to California State Parks

American Land Conservancy assists State Parks with land acquisition statewide. They have been specifically involved in the acquisition of property for Topanga State Park and the Hearst Ranch property adjacent to San Simeon State Park.

**When** Year-round

## Contact Information

American Land  
Conservancy  
250 Montgomery Street  
Suite 210  
San Francisco CA 94104  
Phone: 415/ 912-3660  
Email: mail@alcnet.org  
www.alcnet.org



Hearst Ranch. Photo American Land Conservancy

# American River Conservancy

## Projects and Programs

The American River Conservancy conducts conservation, education, and stewardship programs to protect and enhance native fisheries, vanishing plant and animal communities, scenic vistas, cultural heritage and recreational lands within the American and Cosumnes River watersheds which lie in the foothills of the eastern Sacramento Valley.

## Benefits to California State Parks

American River Conservancy assists State Parks with land acquisition in the American River watershed. They have been specifically involved in the acquisition of property for Auburn State Recreation Area and Marshall Gold Discovery State Historic Park.

**When** Year-round

## Contact Information

Alan Ehrgott, Executive Director  
American River Conservancy  
348 Highway 49  
PO Box 562  
Coloma CA 94536  
Phone: 530 621-1224  
Fax: 530 621-4818  
Email: [ehrgott@arconservancy.org](mailto:ehrgott@arconservancy.org)



Auburn State Recreation Area





# Anza-Borrego Foundation and Institute

## Projects and Programs

The mission of the Anza-Borrego Foundation and Institute (ABF) is to promote conservation in Anza-Borrego Desert State Park® and the surrounding ecological region through land acquisition, education, interpretation and scientific studies. When it was formed in the early 1930s, the park was checker boarded by thousands of acres of inholdings—one estimate as high as 60,000 acres—nearly 10% of the current park!

As of 2004, the Anza-Borrego Foundation has deeded nearly 30,000 acres to the park . . . with 30,000 to go! Acquisitions have been in such critical areas as Palm Canyon, Coyote Canyon and the paleontologically rich Borrego Badlands.

The turn of the 21st century has presented ABF with unique opportunities to acquire major ranch lands that park planners long ago hoped would be part of Anza-Borrego Desert State Park®.

## Benefits to California State Parks

The Anza-Borrego Foundation and Institute assists State Parks with land acquisition in and around Anza-Borrego Desert State Park. The Foundation also supports an extensive environmental education and interpretation program.

**When** Year-round

## Contact Information

Anza-Borrego Foundation and Institute  
P.O. Box 2001  
Borrego Springs CA 92004  
Phone: 760 767-0446  
Fax: 760 767-0465  
Email: [info@theabf.org](mailto:info@theabf.org)  
[www.theabf.org](http://www.theabf.org)



Anza-Borrego Desert State Park



# Big Sur Land Trust

## Projects and Programs

The Big Sur Land Trust strategically and responsibly identifies and acquires valuable landscapes to protect them from the growing pressures of development as a legacy for future generations. The Big Sur Land Trust has been working to protect the incredible lands throughout California's central coast for more than a quarter of a century. Since its inception by a small group of concerned families, The Big Sur Land Trust has become a national leader in land conservation, forging partnerships with willing landowners to protect land from development at a time of unrivalled and unparalleled growth in California either through acquisition or the establishment of conservation easements. Creating an effective private sector alternative for land preservation, The Big Sur Land Trust also serves as a bridge between private and public sectors and has protected more than 30,000 acres of shoreline, wildlife habitat, streams, forests, grasslands and awe inspiring views.

## Benefits to California State Parks

The Big Sur Land Trust has been instrumental in such acquisitions as Point Lobos Ranch and additions to Monterey State Beach.

**When** Year-round

## Contact Information

The Big Sur Land Trust  
PO Box 221864  
Carmel CA 93922  
Phone: 831 625-5523  
Fax: 831 625-0716  
Email: [mail@bigsurlandtrust.org](mailto:mail@bigsurlandtrust.org)  
[www.bigsurlandtrust.org](http://www.bigsurlandtrust.org)

# Bolsa Chica Land Trust

## Projects and Programs

The purpose of the Bolsa Chica Land Trust is to acquire, restore and preserve the entire 1,700 acres of the mesa, lowlands and wetlands of the Bolsa Chica. The Land Trust conducts educational programs to build awareness about the role of the Bolsa Chica wetlands system in the natural and urban environment, and tell the story of its rich history. The Land Trust's Bolsa Chica Stewards have been working since 1996 on the mesa re-vegetation project. Over 2000 volunteers have spent thousands of hours replanting the mesa. More than 8,000 native plants have been planted at the Bolsa Chica Mesa. Over 15,000 volunteer hours have been logged. Volunteers of all ages are bringing the Mesa back to life.

In the future, an amazing urban park will speak to the generations. Well-marked nature trails, preserved archeological and historical sites, and the ever-changing interplay of flora and fauna will create a memorable experience. The preservation of the entire Bolsa Chica is necessary to maintain biodiversity and sensitive treatment of this coastal park environment.

Part of the preservation goal was achieved with the sale of 880 acres of wetlands to the State Lands Commission in 1997. However, without the preservation of the surrounding mesas, the entire wetlands system cannot function.

## Benefits to California State Parks

The Bolsa Chica Land Trust assists State Parks with land acquisition in the area of Bolsa Chica State Beach. They have been specifically involved in the acquisition of property for the Bolsa Chica Ecological Preserve, operated by the Department of Fish & Game, across the Pacific Coast Highway from Bolsa Chica SB.

**When** Year-round

## Contact Information

Marc Stirdivant, Executive Director  
The Bolsa Chica Land Trust  
5200 Warner Avenue #108  
Huntington Beach CA 92649  
Phone: 714 846-1001  
Email: [bclt@bolsachicalandtrust.org](mailto:bclt@bolsachicalandtrust.org)  
[www.bolsachicalandtrust.org](http://www.bolsachicalandtrust.org)



Bolsa Chica. Photo by Steven Eric Smith

# California Rangeland Trust

## Projects and Programs

The purpose of the California Rangeland Trust is to conserve the open space, natural habitat and stewardship provided by California's ranches. The Rangeland Trust is governed by ranchers - men and women who understand the importance and challenges of maintaining working landscapes. The Trust works closely with rangeland owners to protect and enhance the environmental and economic benefits that these working landscapes provide. In addition to drawing on the expertise of its Board of Directors, the Rangeland Trust has relationships with advisors from private industry, the University of California, government agencies, environmental organizations and other land trusts. Landowners have confidence that the Rangeland Trust understands their concerns and will work with them to effectively protect and improve the environmental quality of their ranches and the economic stability of their ranching operations.

## Benefits to California State Parks

The California Rangeland Trust assists State Parks with land acquisition statewide. They have been specifically involved in the acquisition of the Hearst Ranch property, adjacent to San Simeon State Park. The Rangeland Trust currently holds and monitors the conservation easement over the 80,000-acre Hearst Ranch surrounding Hearst Castle®.

**When** Opportunity driven

## Contact Information

Nita Vail, Executive Director  
California Rangeland trust  
1221 H Street  
Sacramento CA 95814-1910  
Phone: 916-444-2096  
Fax: 916-444-2194  
Email: [nvail@rangelandtrust.org](mailto:nvail@rangelandtrust.org)  
Website: [www.rangelandtrust.org](http://www.rangelandtrust.org)





# Cayucos Land Conservancy

## Projects and Programs

The Cayucos Land Conservancy was formed in March 1999 for the purpose of establishing a permanent greenbelt around Cayucos in San Luis Obispo County. In order to create this scenic resource, the Cayucos Land Conservancy (CLC) set goals to protect the Estero Bluffs Property, the hillsides behind Cayucos and the coastal terrace.

## Benefits to California State Parks

The Cayucos Land Conservancy has been granted a perpetual conservation easement over the Estero Bluffs, which stretch nearly four miles north, from Cayucos to Villa Creek, while California State Parks holds fee ownership to the property. As a result of the conservation easement, CLC participates in management decisions effecting Estero Bluffs and cooperates with State Parks in protecting its recreational and natural resources. CLC's goal is to ensure that the community's vision to keep the land "as is" will be honored in perpetuity.

## When

Opportunity driven

## Contact Information

Greg Bettencourt, President  
Cayucos Land Conservancy  
P.O. Box 336  
Cayucos CA 93430  
Phone: 805 995-1675  
Fax: 805 995-1675  
Email: [gmbett@charter.net](mailto:gmbett@charter.net)  
[www.thecayucoslandconservancy.org](http://www.thecayucoslandconservancy.org)

# Elkhorn Slough Foundation

## Projects and Programs

The Elkhorn Slough Foundation is a nonprofit, member-supported organization working to conserve and restore Elkhorn Slough and its watershed in Monterey County. The Foundation works with local, state, and national constituencies to protect natural heritage. As California's coastal wetlands continue to disappear, the preservation of the Central Coast's premier estuary becomes ever more critical.

## Benefits to California State Parks

The Elkhorn Slough Foundation assists State Parks with land acquisition in the Monterey Bay area. They have been specifically involved in the acquisition of property for Salinas River and Moss Landing State Beaches.

## When

Year-round

## Contact Information

Elkhorn Slough Foundation  
Box 267  
Moss Landing CA 95039  
Phone: 831 728-5939 or 831 728-2822  
Fax: 831 728-1056  
Email: [info@elkhornslough.org](mailto:info@elkhornslough.org)  
[www.elkhornslough.org](http://www.elkhornslough.org)



Photos: Elkhorn Slough Foundation

# Foundation for Small Wilderness Area Preservation, Los Osos/Morro Bay Chapter Projects and Programs

The Foundation for Small Wilderness Area Preservation (SWAP) is a 501(c)(3) nonprofit corporation founded in 1971 by Emily Polk, Ansel Adams, Margaret Owings and Edgar Wayburn. Its purpose then, as now, is to provide a mechanism by which people can preserve vitally important natural areas of undeveloped land or small wilderness areas through land acquisition. The Los Osos/Morro Bay Chapter of Small Wilderness Area Preservation was organized in 1985 for the specific purpose of purchasing and preserving a threatened area of Los Osos known as the Elfin Forest.

## Benefits to California State Parks

The first parcel of land in San Luis Obispo County saved by SWAP was the Los Osos Oaks State Reserve purchased by California State Parks in 1971 through the efforts of Emily Polk. The Baptista Ranch on Turri Road and the Griffith Property across Los Osos Creek from the Baptista Ranch were also acquired through the efforts of the Estero Chapter of SWAP (forerunner of the current Los Osos/Morro Bay Chapter) during the 1970s, and turned over to California State Parks. In 1987, legislation authored by Assemblyman Eric Seastrand provided funding to purchase 51.2 acres of the Elfin Forest as an addition to Morro Bay State Park. SWAP continues its stewardship of the Elfin Forest with liaison with California State Parks and an “Adopt a Park” agreement with San Luis Obispo County Parks that provides for maintenance and control of erosion and native plant restoration.

**When** Opportunity driven

## Contact Information

Ron Rasmussen, Chair  
Los Osos Morro Bay Chapter  
Small Wilderness Area Preservation  
P.O. Box 6442  
Los Osos CA 93412  
Phone: 805 528-0392  
Email: rerasmus@earthlink.net

# Hills for Everyone

## Projects and Programs

Hills for Everyone works to protect, preserve and restore the environmental resources and natural environs of the Puente-Chino Hills and surrounding areas for the enjoyment of current and succeeding generations and to initiate, sponsor, promote, organize and carry out plans, programs, and activities that will further these ends.

Regional efforts to save the Puente-Chino Hills have been underway for many years. Conservationists have been remarkably successful. Currently, Hills For Everyone is heavily engaged in the protection of the “Missing Middle” of an important wildlife corridor. Tonner Canyon and the hills between Harbor Boulevard in La Habra Heights and the 57 Freeway in Brea are threatened by major development projects. If these lands are developed, wildlife in the western part of the hills will become isolated and die out. Protection of the “Missing Middle” is essential to the health of the entire Corridor and the livability of the communities in this region.

## Benefits to California State Parks

Hills for Everyone was instrumental in the founding of Chino Hills State Park, helping set aside 14,000 acres. In the western part of the Puente-Chino Hills Corridor, nearly 4,000 acres have been purchased as open space. The entire hillside system is now connected to the Cleveland National Forest at Coal Canyon, the first acquisition in state park history that was made for its connectivity value.

**When** Year-round

## Contact Information

Claire Schlotterbeck, Executive Director  
Hills For Everyone  
P.O. Box 9835  
Brea CA 92822-1835  
Email: [info@HillsForEveryone.org](mailto:info@HillsForEveryone.org)



Chino Hills State Park

# Lake County Land Trust

## Projects and Programs

The goal of the Lake County Land Trust is to preserve land permanently and when possible provide public access for aesthetic and recreational uses. The trust can hold Conservation Easements which are a creative way to preserve land in perpetuity while still maintaining private ownership.

The Lake County Land Trust was formed to protect and preserve wetlands, wildlife habitats, forests, watersheds, riparian stream corridors, lakeside areas, and other properties with unique scenic, cultural, agricultural, educational, or historical value in Lake County, California. The trust works only with willing sellers and has no power of eminent domain. The trust works cooperatively with landowners, private groups and governmental agencies. Funding for land acquisition comes from State and Federal sources as well as private corporations and donations. The Lake County Land Trust is a sponsor member of the Land Trust Alliance and the California Council of Land Trusts.



## Benefits to California State Parks

The Lake County Land Trust assists State Parks with land acquisition in Lake County. They have been specifically involved in the acquisition of property for Clear Lake State Park and Anderson Marsh State Historic Park.

**When** Opportunity driven



## Contact Information

Lake County Land Trust  
PO Box 711  
Lower Lake CA 95457  
Phone: 707 995-1398  
E-mail: [susanne@jps.net](mailto:susanne@jps.net)  
[www.lakecountylandtrust.org](http://www.lakecountylandtrust.org)



# Land Conservancy of San Luis Obispo County

## Projects and Programs

The Land Conservancy of San Luis Obispo County is a local land trust working in San Luis Obispo County, California. The Conservancy's purpose is to protect land having scenic, agricultural, habitat and cultural values. They do this through land acquisition, conservation easements, and resource restoration.

The Land Conservancy was created in 1984. Since formation, they have permanently protected over 8,500 acres of land in San Luis Obispo County. The Land Conservancy focuses on protecting Monterey Pine Forests in Cambria, coastal streams and drainages in San Luis Obispo and Nipomo, oak woodlands countywide, and wetlands in Black Lake Canyon. Their activities also include conservation planning, natural resource restoration, and community outreach. The Conservancy is governed by a Board of Trustees representing various communities within the County and has a dedicated professional staff.

## Benefits to California State Parks

The Land Conservancy of San Luis Obispo County assists State Parks with land acquisition in San Luis Obispo County. They have been specifically involved in the acquisition of property for Morro Bay and Montana de Oro State Parks.

**When** Opportunity driven

## Contact Information

Brian B. Stark, Executive Director  
Land Conservancy of San Luis Obispo County  
P.O. Box 12206  
San Luis Obispo CA 93406  
Phone: 805 544-9096  
Fax: 805 544-5122  
Email: [lc@special-places.org](mailto:lc@special-places.org)  
[www.special-places.org](http://www.special-places.org)



# LandPaths

## Projects and Programs

LandPaths, or Land Partners Through Stewardship, is dedicated to fostering a love of the land in Sonoma County, creating ways for people to experience the beauty, understand the value, and steward the land in their local communities.



LandPaths outings create opportunities for a diversity of residents to visit open spaces, farms and parks-in-development throughout Sonoma County. Regular stewardship projects range from creek clean ups & non-native species removal to trail building and ranch road improvements. LandPaths education programs provide the chance for over 400 students each year, from 2nd through 11th grade, to experience the benefits of field based learning.

## Benefits to California State Parks

LandPaths is proud to assist State Parks with park acquisition, public access, planning and management in Sonoma County. LandPaths has assisted with the McCormick addition to Sugarloaf Ridge State Park, and additions to Jack London State Historic Park. Most recently, LandPaths has been working with State Parks on the 3,373-acre Willow Creek acquisition to be added to Sonoma Coast State Beach. Through a four-year Coastal Conservancy grant, LandPaths has been providing assistance with public access and land management. This assistance has allowed State Parks to acquire the property and allow safe public access while protecting resources.

LandPaths provides an in-person, park orientation to all users of this new park property, and has developed and implemented a volunteer Trail Watch and a Road & Trail Crew, providing an opportunity to educate park users and to get them involved in stewardship.



Willow Creek Acquisition. Photo: LandPaths

**When** Year-round

## Contact Information

Craig Anderson, Executive Director  
Jonathan Glass, Project Manager  
LandPaths  
P.O. Box 4648  
Santa Rosa CA 95402  
Phone: 707 544-7284  
Fax: 707 544-7242  
E-mail: [info@landpaths.org](mailto:info@landpaths.org)  
[www.landpaths.org](http://www.landpaths.org)

# Land Trust for Santa Barbara County

## Projects and Programs

The Land Trust for Santa Barbara County protects valuable wildlife habitat, scenic ranch and farm land and community open space through voluntary conservation agreements with private landowners and public partners. Since 1985, the Land Trust has conserved over 18,500 acres of natural and agricultural land through conservation easements and fee acquisitions, including the Sedgwick Reserve that is in the University of California Natural Reserve System. The Land Trust has a successful record of riparian and wetland restoration and management projects, including two that are restoring access to streams for the endangered Southern steelhead populations that breed on the county coast.

## Benefits to California State Parks

Land Trust conservation easements protect watersheds, wildlife habitat and scenic views around El Capitan State Park, Refugio State Beach and Gaviota State Park. State Park visitors can enjoy the Arroyo Hondo Preserve near Gaviota, and the Carpinteria Bluffs and Carpinteria Salt Marsh, both within walking distance of Carpinteria State Beach.

**When** Year-round

## Contact Information

Michael Feeney, Executive Director  
Land Trust for Santa Barbara County  
P.O. Box 91830  
Santa Barbara CA 93190  
Phone: 805 966-4520  
Fax: 805 963-5988  
Email: [info@sblandtrust.org](mailto:info@sblandtrust.org)  
[www.sblandtrust.org](http://www.sblandtrust.org)



# The Land Trust of Napa County

## Projects and Programs

The Land Trust of Napa County works to protect the natural diversity, scenic open space and agricultural vitality of Napa County by preserving lands with significant conservation values for present and future generations and by fostering an appreciation and understanding of the natural environment.

The Land Trust actively

- Identifies and permanently protects significant lands in Napa County by acquiring fee title, by accepting conservation easements, and by assisting in the transfer of lands to local, state, or federal agencies for protection.
- Manages permanent preserves and monitors and enforces conservation easement restrictions to protect conservation values and to provide the public with an outstanding example of enlightened land stewardship.
- Provides educational and research opportunities to foster appreciation and understanding of the natural environment and the conservation of natural resources.

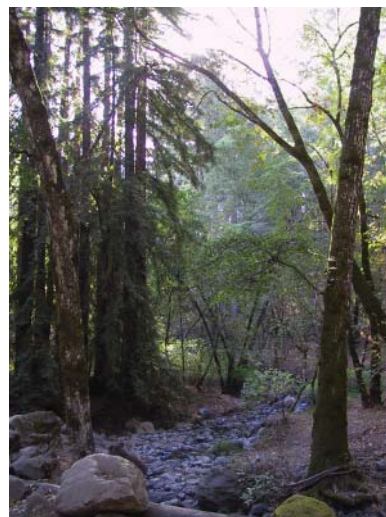
## Benefits to California State Parks

The Land Trust of Napa County assists State Parks with land acquisition in Napa County. They have worked with CSP for over 30 years and via 7 transactions have protected 2,413 acres at Bothe-Napa Valley and Robert Louis Stevenson State Parks.

**When** Opportunity driven

## Contact Information

John Hoffnagle, Executive Director  
The Land Trust of Napa County  
1040 Main St, Suite 203  
Napa CA 94559  
Phone: 707 252-3270  
Fax: 707 252-1071  
Email: [john@napalandtrust.org](mailto:john@napalandtrust.org)  
[www.napalandtrust.org](http://www.napalandtrust.org)



Bothe-Napa Valley State Park

# Mendocino Land Trust

## Projects and Programs

The Mendocino Land Trust has been working in the public interest since 1976 to conserve, in perpetuity, over 9,300 acres of significant lands throughout Mendocino County. The purpose of the Mendocino Land Trust is to conserve important natural resources of Mendocino County, including wildlife habitat, open space, scenic vistas, working farmlands and forests, watersheds, and to facilitate public access.

The Trust's conservation approach includes working with private landowners, governmental agencies, and community groups to establish ecoregional priorities and strategies as the basis for conservation action. Strategies and services include conservation planning, land conservation (fee acquisition as well as purchased and donated conservation easements) and volunteer stewardship.

## Benefits to California State Parks

The Mendocino Land Trust works in partnership with the California State Parks to provide for the permanent protection of the estuarine, wetlands, wildlife, and associated later-seral stage forest characteristics of the Big River property, adjacent to Mendocino Headlands State Park. They have also been involved with the acquisition of land for Caspar Headlands State Park.

**When** Opportunity driven

## Contact Information

James R. Bernard, Executive Director  
Mendocino Land Trust  
P.O. Box 1094  
Mendocino California 95460  
Phone: 707 962-0470  
Fax: 707 962-0444  
Email: [jbernard@mendocinolandtrust.org](mailto:jbernard@mendocinolandtrust.org)  
[www.mendocinolandtrust.org](http://www.mendocinolandtrust.org)



# Middle Mountain Foundation

## Projects and Programs

The Middle Mountain Foundation (MMF), a 501 (c) (3) nonprofit organization, was formed in 1989 as an outgrowth of the Sutter Buttes Naturalists. The specific purposes of the foundation are to “educate the general public in the relevance and importance to society of natural and cultural resources and to encourage preservation, understanding, and good stewardship of such resources.”

Through contractual agreements with landowners, MMF has created learning opportunities within the Sutter Buttes for thousands of people, typically as guided hikes for the public or as school class outings. Carefully controlled access allows visitors to have high quality experiences while protecting the land itself. MMF board members also engage in outreach, spreading the message of this special place to those who have not yet visited the interior of the range.

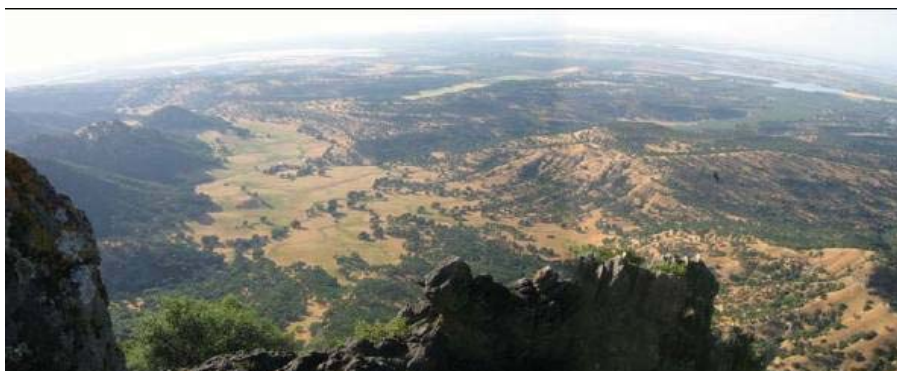
## Benefits to California State Parks

MMF currently works collaboratively with numerous entities, including local (Colusa, Yuba and Sutter Counties), state (State Parks and Fish and Game), regional (e.g., Great Valley Center), and National Land Trusts (e.g., Land Trust Alliance, Nature Conservancy) to preserve the land within the Sutter Buttes.

**When** Opportunity driven

## Contact Information

Michael Darnell, Executive Director  
Middle Mountain Foundation  
PO Box 3359  
Yuba City CA 95992-3359  
Phone: 530 671-6116  
Email: [middlemountain@yahoo.com](mailto:middlemountain@yahoo.com)



Interior area of Sutter Buttes. Photo: Michael Darnell, Middle Mountain Foundation

# Northcoast Regional Land Trust

## Projects and Programs

The Northcoast Regional Land Trust (NRLT) is a regional organization with a large, tri-county area of interest - Humboldt, Del Norte and Trinity Counties - which together make up nearly five million acres of land. Of these three counties a respective 50%, 75%, and 90% of the resource land bases are publicly owned. The NRLT is dedicated to the protection of working farms, forests, and grazing lands, and to the preservation and protection of land for its natural, educational, scenic and historic values. The organization works with landowners on a voluntary basis to promote stewardship of Northern California's healthy and productive resource base, natural systems and quality of life.

Since incorporation in 2000, NRLT has protected 320 acres of salmon-spawning tributaries in the Mattole River watershed; acquired a 54 acre property that will reestablish natural tidal action that expands, enhances, and restores estuary and brackish marsh habitat for a variety of fish and wildlife species, including threatened and endangered salmonids; is actively working on five conservation projects that would preserve biological, cultural and agricultural resources on 1,000 acres in several watersheds throughout Humboldt County; has established conservation easements on more than 6,000 acres of working ranches; and is currently assisting private ranchland owners in placing conservation easements on over 19,000 more acres throughout the north coast.

## Benefits to California State Parks

The Northcoast Regional Land Trust has been instrumental in the acquisition of Vista Ridge Grove, Vista Ridge and Virgin Grove, land intended for Sinkyone Wilderness State Park.

**When** Opportunity driven

## Contact Information

Jim Petruzzi, Executive Director  
Northcoast Regional Land Trust  
PO Box 398  
Bayside California 95524  
Phone: 707 822-2242  
Fax: 707 822-5210  
Email: [j.petruzzi@ncrlt.org](mailto:j.petruzzi@ncrlt.org)  
[www.ncrlt.org](http://www.ncrlt.org)



Baker Creek. Photo: Northcoast Regional Land Trust

# The Packard Foundation

## Projects and Programs

The David and Lucile Packard Foundation was created in 1964 by David Packard (1912-1996), the co-founder of the Hewlett-Packard Company, and his wife, Lucile Salter Packard (1914-1987).

The Packard Foundation invests in innovative people and organizations to improve the lives of children, enable creative pursuit of science, advance reproductive health, and conserve and restore earth's natural systems.

The Foundation focuses the majority of its grant making in three program areas:

- Conservation and Science Program: seeks to protect and restore our oceans, coasts, and atmosphere and to enable the creative pursuit of scientific research toward this goal.
- Population Program: seeks to slow the rate of growth of the world's population, to expand reproductive health options among the world's poor, and to support reproductive rights.
- Children, Families and Communities Program: seeks to ensure opportunities for all children to reach their potential.

## Benefits to California State Parks

The Packard Foundation has assisted State Parks with land acquisition in the Central Coast area of California. They have been specifically involved in the acquisition of the Coast Dairies property near Santa Cruz and Wilder Ranch State Historic Park.

**When** Opportunity driven

## Contact Information

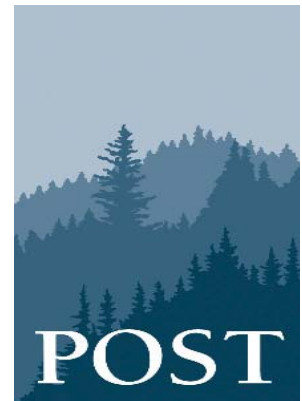
The David and Lucile Packard Foundation  
300 Second St  
Los Altos California 94022  
Phone: 650 948-7658  
Email: [inquiries@packard.org](mailto:inquiries@packard.org)  
[www.packard.org](http://www.packard.org)

# Peninsula Open Space Trust

## Projects and Programs

The purpose of the Peninsula Open Space Trust (POST) is to give permanent protection to the beauty, character and diversity of the San Francisco Peninsula landscape for people here now and for future generations. POST encourages the use of these lands for natural resource protection, wildlife habitat, low-intensity public recreation and agriculture.

Since its founding in 1977, POST has helped to give permanent protection to more than 55,000 acres of land in San Mateo and Santa Clara counties. The land protected by POST reflects the Peninsula's rich natural diversity and the immeasurable contribution wild and scenic open spaces make to our quality of life. POST's most recent campaign, *Saving the Endangered Coast*, raised \$200 million and has protected more than 14,000 acres of precious coastal open space as of October 2006.



## Benefits to California State Parks

POST has worked with State Parks to acquire property for Butano State Park and San Gregorio State Beach. In February 2005, POST transferred Whaler's Cove, a property adjacent to Pigeon Point Lighthouse, and sixty-one acres of the Bolsa Point property to California State Parks.

**When** Opportunity driven

## Contact Information

Audrey C. Rust, President  
Peninsula Open Space Trust  
3000 Sand Hill Road, Bldg. 1,  
Suite 155  
Menlo Park CA 94025  
Phone: 650 854-7696  
Fax: 650 854-7703  
[post@openspacetrust.org](mailto:post@openspacetrust.org)



Whaler's Cove © Paolo Vescia 2006, Courtesy of POST



# Riverside Land Conservancy

## Projects and Programs

The Riverside Land Conservancy was founded in 1988 in response to the critical need for a local community organization dedicated to the conservation of open space and natural areas. Since its beginnings, primary emphasis for its activities has been placed on lands that link ecological preserves, parks and other wildlife refuges, conserve riparian habitats, or protect significant agricultural resources in Riverside County. Over time, the Conservancy has also become involved in conservation in other inland southern California counties.

Over the past few years, RLC has leveraged \$34 worth of land for every dollar spent, resulting in the acquisition of over 10,000 acres of land for preservation. As a non-profit land trust that works with landowners who would like to see their lands preserved, RLC helps to ensure that natural lands, wildlife habitat and working farm lands are preserved for future generations.

## Benefits to California State Parks

The Riverside Land Conservancy assists California State Parks with land acquisition in Riverside County. The Conservancy was instrumental in the acquisition of the San Timoteo Canyon Property .

**When** Opportunity driven

## Contact Information

Pete Dangermond, Executive Director  
Riverside Land Conservancy  
4075 Mission Inn Avenue  
Riverside CA 92501  
Phone: 951 788-0670  
Fax: 951 788-0679  
Email: [rlc0670@sbcglobal.net](mailto:rlc0670@sbcglobal.net)



San Timoteo Canyon Property



# Sacramento Valley Conservancy

## Projects and Programs

The Sacramento Valley Conservancy (SVC) is a private, non-profit land trust. Its purpose is to preserve the beauty, character and diversity of the Sacramento Valley landscape by working with citizens, property owners, developers, public agencies and other nonprofit organizations. It creates dedicated open space by the acceptance of gifts, private purchase from willing sellers, facilitation of public acquisition, conservation easements and by cooperative efforts. SVC then arranges for the preservation of these lands for agricultural, natural resource protection, recreation, and wildlife habitat purposes.



**sacramento valley  
conservancy**

*Open Space. For all of us.*

## Benefits to California State Parks

In 2003, the Off Highway Motor Vehicle Recreation Division of CSP entered into a partnership with the Sacramento Valley Conservancy to acquire and manage buffer lands associated with Prairie City State Vehicular Recreation Area. Today, the Conservancy works with the Division on planning and acquisition projects, and provides support in negotiations with nearby property owners, as well as planning issues with local agencies.

## When

Opportunity-driven

## Contact Information

Aimee Rutledge, Executive Director  
Sacramento Valley Conservancy  
PO Box 163351  
Sacramento CA 95816  
Phone: 916 492-0908  
Fax: 916 448-4120  
Email: [Bond13mac@aol.com](mailto:Bond13mac@aol.com)  
[www.sacramentovalleyconservancy.org](http://www.sacramentovalleyconservancy.org)



Deer Creek Hills. Photo: Sacramento Valley Conservancy

*California State Parks Partners*

# Sanctuary Forest, Inc.

## Projects and Programs

Sanctuary Forest, Inc. is a non-profit land trust located within the temperate rainforest of the headwaters of the Mattole River on California's northern coast. Sanctuary Forest provides permanent protection for ecologically sensitive lands, enriching the positive relationship between these lands and our communities. Our conservation efforts include the protection of old growth Douglas fir, ancient redwood groves, wildlife corridors, other precious habitat and healthy streamflows in the Mattole watershed and surrounding regions

The Upper Mattole River and Forest Cooperative is a collaborative entity of public, private, federal, state and non-profit organizations working together to manage over 4,000 acres of the Mattole headwaters as an old growth forest and endangered salmon refuge. These partners include such public partners as the Bureau of Land Management, California Department of Fish & Game, California Coastal Conservancy, California Department of Forestry and Fire Protection, and the California Wildlife Conservation Board

## Benefits to California State Parks

Sanctuary Forest, Inc. assisted in the acquisition of property now part of the Sinkyone Wilderness State Park.

**When** Opportunity driven

## Contact Information

Eric Goldsmith, Executive Director  
Sanctuary Forest, Inc.  
P.O. Box 166  
Whitethorn CA 95589  
Phone: 707 986-1087  
Fax: 707 986-1607  
Email: [eric@sanctuaryforest.org](mailto:eric@sanctuaryforest.org)

# Santa Monica Mountains Trails Council

## Projects and Programs

The Santa Monica Mountains Trails Council coordinates with various government agencies in efforts toward development and preservation of the trail system; assists in negotiations with property owners regarding specific trail alignments; promotes public awareness; and builds, monitors and maintains trails. The Santa Monica Mountains Trails Council works to protect and enhance the trail system that serves as a recreational, educational and historical resource for generations to enjoy.

## Benefits to California State Parks

Trails Council volunteers maintain trails on the state and federal lands in the Santa Monica Mountains. They have a volunteer crew working on a trail somewhere in the mountains every Saturday of the year, except in July and August. Over 115 volunteers and agency personnel worked to build and restore trails in Pt. Mugu State Park during the 25th annual Santa Monica Mountains Trail Days in April 2006.

**When** Year-round

## Contact Information

Ruth Gerson, President  
Santa Monica Mountains Trails Council  
P.O. Box 345  
Agoura Hills CA 91376  
Phone: 818 222-4531  
Email: [mail@smmtc.org](mailto:mail@smmtc.org)  
[www.smmtc.org](http://www.smmtc.org)



Photos: Santa Monica Mountains Trails Council



# Save Mount Diablo

## Projects and Programs

Save Mount Diablo is a San Francisco Bay Area citizens non-profit 501(c)3 organization that works to preserve Mount Diablo's peaks and surrounding foothills, through land acquisition and preservation strategies to: protect the mountain's natural beauty, integrity, and biological diversity; enhance our area's quality of life; and provide recreational opportunities consistent with protection of natural resources.

## Benefits to California State Parks

Save Mount Diablo has been instrumental in increasing open space on and around the mountain from 6,788 acres to more than 89,000 acres. The organization works in partnership with Mt. Diablo State Park, East Bay Regional Park District, and other public and private entities to increase and manage natural lands and to identify mitigation opportunities. They have also been involved in the acquisition of the John Marsh Home and Cowell Ranch properties.

**When** Year-round

## Contact Information

Ron Brown, Executive Director  
Save Mount Diablo  
1901 Olympic Blvd., Suite 220  
Walnut Creek CA 94596  
Phone 925 947-3535  
Fax 925 947-0642  
Email: [smdinfo@savemountdiablo.org](mailto:smdinfo@savemountdiablo.org)



John Marsh Home. Photo: Friends of John Marsh



Cowell Ranch. Photo: (c) Richard Rollins

# Save-the-Redwoods League

## Projects and Programs

Since its formation in 1918, the Save-the-Redwoods League has assisted in the purchase of more than 6 of every 10 acres of protected redwoods in California's State Parks. The League has helped preserve 165,000 acres of ancient redwoods. The League is the only organization focused on conservation of the redwood forest throughout its natural range. Their primary conservation tool is acquisition of forestland at fair-market value from willing sellers. Purchases are based on professional appraisals. The League also funds restoration, supports research to expand knowledge of redwood forest dynamics, and educates the public about redwoods and the redwood forest ecosystem.



Armstrong Redwoods SR

## Benefits to California State Parks

The Save-the-Redwoods League was instrumental in the creation of the State Park System in the 1920s and is responsible for the addition of thousands of acres of irreplaceable natural resources to the System. The League has a world-recognized reputation for foresight and preservation.



### When

Year-round

### Contact Information

Save-the-Redwoods League  
114 Sansome St, Room 1200  
San Francisco CA 94104-3823  
Phone: 415 362-2352  
Fax: 415 362-7017  
[www.savetheredwoods.org](http://www.savetheredwoods.org)



# Sempervirens Fund

## Projects and Programs

The purpose of Sempervirens Fund is to preserve and protect the natural character of California's Santa Cruz Mountains and to encourage appropriate public enjoyment of this environment.

## Benefits to California State Parks

Sempervirens Fund provides assistance with acquisition of property adjacent to and within Portola Redwoods SP, Castle Rock SP, Butano SP, and Big Basin Redwoods SP. Most recently, they have participated in the acquisition of Panorama Ridge at Castle Rock SP. The Sempervirens Fund has saved over 21,000 acres of redwood forest in the Santa Cruz Mountains.

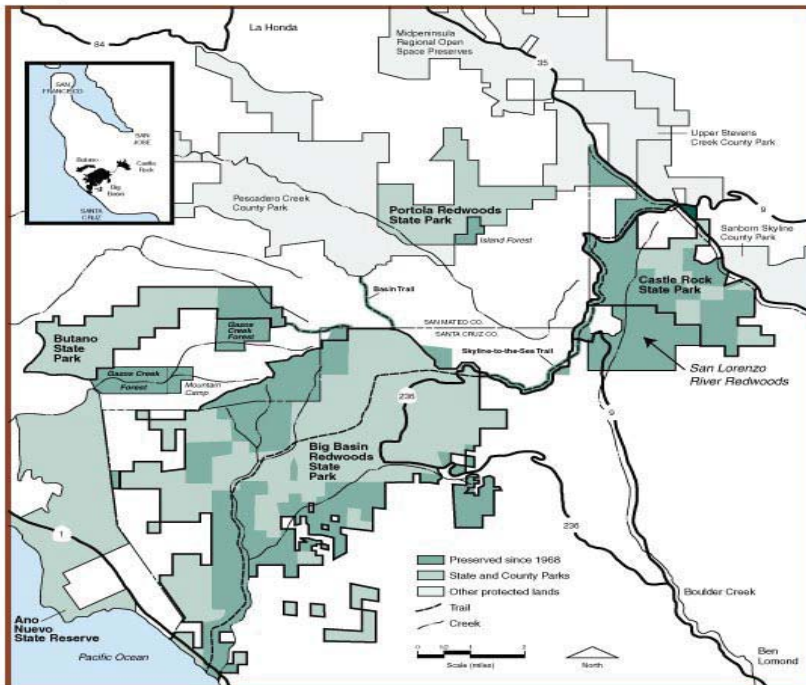


Lompico Headwaters.  
Photo: © 2006 Frank Balthis

## When

Opportunity-driven

### Sempervirens Fund - Land Saved since 1900



## Contact Information

Brian Steen, Executive Director  
Sempervirens Fund  
PO Drawer BE  
Los Altos CA 94023-4054  
Phone: 650 968-4509  
Fax: 650 968-0713  
[www.sempervirens.org](http://www.sempervirens.org)

# Sequoya Challenge

## Projects and Programs

Sequoya Challenge works to protect the land and provide educational experiences. Their primary project is to provide wilderness access to the handicapped, particularly along the South Yuba Independence Trail in Nevada County.

## Benefits to California State Parks

Sequoya Challenge maintains the South Yuba Independence Trail at South Yuba River State Park and provides guided walks for the public along the trail. The group has also been involved in acquisition of property for South Yuba River State Park.

**When** Opportunity driven

## Contact Information

Sequoya Challenge  
PO Box 3166  
Grass Valley CA 95945-3166  
Phone: (530) 477-4788  
Fax: (530) 271-0706  
Email: l\_chaplin@hotmail.com  
www.sequoyachallenge.com



South Yuba River and Trail



# Sonoma County Agricultural Preservation and Open Space District

## Projects and Programs

The Sonoma County Agricultural Preservation and Open Space District protects farm and rangeland, greenbelts between cities, wildlife habitat and land for public recreation in Sonoma County. The voters of Sonoma County created the District in 1990 and its funding comes from a quarter cent sales tax, also approved by the voters. The County Board of Supervisors serves as its Board of Directors. It has protected almost 70,000 acres and has added thousands of acres to local, regional and State Parks throughout the County. By will of the voters, the District can only work with willing landowners.

## Benefits to California State Parks

The Sonoma County Agricultural Preservation and Open Space District and State Parks have been successful partners in several transactions that have resulted in additions to Austin Creek State Park, Sugarloaf Ridge State Park, Sonoma Coast State Beach, Jack London State Historic Park and Annadel State Park. The District was the negotiating partner and primary funding source on these acquisitions. It continues to hold other potential State Park additions, pending further negotiations.

**When** Opportunity driven

## Contact Information

Andrea Mackenzie, General Manager  
Sonoma County Agricultural Preservation and Open Space District  
747 Mendocino Ave Ste 100  
Santa Rosa CA 95401  
Phone: 707 565-7360  
Fax: 707 565-7359  
Email: [openspace@sonoma-county.org](mailto:openspace@sonoma-county.org)  
[www.sonomaopenspace.org](http://www.sonomaopenspace.org)



**S O N O M A C O U N T Y**  
**AGRICULTURAL PRESERVATION  
AND OPEN SPACE DISTRICT**



Red Hill area, Sonoma Coast SB. Photo: Sonoma County Agricultural Preservation and Open Space District

# Sonoma Land Trust

## Projects and Programs

Sonoma Land Trust is a local, non-governmental, non-profit organization funded largely by membership contributions. The Land Trust works closely with private land-owners, the Sonoma County Agricultural Preservation and Open Space District and other public agencies at all levels of government, nonprofit partners, and foundations. Sonoma Land Trust is a member of the California Council of Land Trusts and subscribes to the Standards and Practices of the national Land Trust Alliance.

Since 1976, Sonoma Land Trust has protected more than 17,000 acres of beautiful, productive and environmentally significant land in and around Sonoma County.

## Benefits to California State Parks

The Sonoma Land Trust helped preserve and acquire the Willow Creek property, recently added to Sonoma Coast State Beach; and has assisted in the acquisition of property for Salt Point State Park.

**When** Opportunity driven

## Contact Information

Ralph Benson, Executive Director  
Sonoma Land Trust  
966 Sonoma Ave  
Santa Rosa CA 95404  
Phone: 707 526-6930  
Email: [ralph@sonomalandtrust.org](mailto:ralph@sonomalandtrust.org)  
[www.sonomalandtrust.org](http://www.sonomalandtrust.org)



# The Archaeological Conservancy

## Projects and Programs

The Archaeological Conservancy, established in 1980, is the only national non-profit organization dedicated to acquiring and preserving the best of our nation's remaining archaeological sites. The Conservancy protects these sites by acquiring the land on which they rest, preserving them for posterity. Based in Albuquerque, New Mexico, the Conservancy also operates regional offices in Mississippi, Maryland, Ohio, and California.

## Benefits to California State Parks

The Archaeological Conservancy assists with acquisition planning and acquires archaeological sites. It then sells these sites to state parks departments or holds them in preserve status.

## When

Opportunity driven



## Contact Information

The Archaeological Conservancy

The Archaeological Conservancy  
5301 Central Ave NE, Ste 902  
Albuquerque NM 87108  
Phone: 505 266-1540  
[www.archaeologicalconservancy.com](http://www.archaeologicalconservancy.com)



Indian Rock Shelter, Colorado Desert District



# The Nature Conservancy

## Projects and Programs

The Nature Conservancy is an international nonprofit membership organization, whose mission is to preserve plants, animals and natural communities by protecting the lands and waters they need to survive. Using a strategic, science-based planning process called Conservation by Design, the Conservancy and its more than one million members have safeguarded over 117 million acres of land and 5,000 miles of river around the world. In California, The Nature Conservancy has preserved more than 1.2 million acres of land and water, and helped to protect 3.8 million acres of the state's coastal marine areas. The Conservancy works with California State Parks and a variety of state and federal government agencies, such as the U.S. Department of the Interior, the Department of Defense and the U.S. Fish and Wildlife Service, as well as agencies at the state and local level.

## Benefits to California State Parks

The Nature Conservancy has the flexibility and the resources to acquire land when opportunities arise. With their assistance, the Department has acquired property in many areas of the state. The Nature Conservancy also works with elected officials on the state budget and statewide bond measures to ensure that CSP has an ongoing source of funding to achieve it's mission.

## When

Year-round

## Contact Information

Liz O'Donoghue, Dir. External Affairs  
The Nature Conservancy  
California Program  
201 Mission St, 4th Flr  
San Francisco CA 94105-1832  
Phone: 415 777-0487  
Fax: 415 777-0244  
Email: [calweb@tnc.org](mailto:calweb@tnc.org)  
[www.nature.org/california](http://www.nature.org/california)



Photo: The Nature Conservancy

# The Trust for Public Land

## Projects and Programs

The Trust for Public Land (TPL) is a national, nonprofit, land conservation organization that conserves land for people to enjoy as parks, community gardens, historic sites, rural lands, and other natural places, ensuring livable communities for generations to come. TPL helps structure, negotiate, and complete land transactions that create parks and protected natural areas.

THE  
TRUST  
for  
PUBLIC  
LAND



CALIFORNIA

## Benefits to California State Parks

TPL has been instrumental in preservation of land for many California State Parks, including Rio de Los Angeles State Park, a State Recreation Area (Cornfields); Cowell Ranch in Contra Costa County; Piedras Blancas Beach near Hearst Castle®; and the Coast Dairies property in Santa Cruz County.

## When

Year-round

## Contact Information

Reed Holderman, California Executive Director

Western Regional Office  
116 New Montgomery St, 3rd Flr  
San Francisco CA 94105  
Phone: 415 495-5660  
Fax: 415 495-0541  
[www.tpl.org](http://www.tpl.org)



Coast Dairies. Photo: © Sam Roberts



Cornfields overview. Photo: © Rich Reid/Colors of Nature

# Truckee Donner Land Trust

## Projects and Programs

The Truckee Donner Land Trust is a 501(c)(3) nonprofit organization that works to preserve and protect important historic, recreational and scenic open spaces in the greater Truckee region. The Trust works with landowners, federal, state and local governments, and the public-at-large, to create win-win situations for private and public interests. They negotiate easements, land exchanges and land acquisitions.

## Benefits to California State Parks

The Truckee Donner Land Trust - in partnership with the Trust for Public Land (TPL) — has acquired over 2,100 acres of private land adjacent to the Donner Memorial State Park, the Schallenberger Ridge property. The Truckee Donner Land Trust and TPL are currently completing conveyance of property ownership to the State Park to triple the size of the park. The Land Trust and TPL raised almost \$4 million from the public and private sectors for this project.

## When

Opportunity driven

## Contact Information

Perry Norris, Executive Director  
Truckee Donner Land Trust  
10069 W. River Street  
Truckee CA 96161  
Phone: 530 582-4711  
[www.tdlandtrust.org](http://www.tdlandtrust.org)

# Wildlands Conservancy

## Projects and Programs

The Wildlands Conservancy (TWC) is a California nonprofit public benefit corporation founded in 1995. TWC has conveyed more lands in California to National Parks and Federal Wilderness Areas than has any other conservation organization. TWC's purpose is to preserve the beauty and biodiversity of the earth, and to fund programs so that every child may know the wonder and joy of nature.

## Benefits to California State Parks

The Wildlands Conservancy identified, lobbied for and secured funding to acquire an important wildlife corridor connecting Chino Hills State Park and the Cleveland National Forest. Further, The Wildlands Endowment Fund has donated funds for the Chino Hills State Park Visitor Center which will showcase urban wildlife corridors.

**When** Opportunity driven

## Contact Information

David Myers, Executive Director  
The Wildlands Conservancy  
39611 Oak Glen Road, #12  
Oak Glen CA 92399  
Phone: 909 797-8507  
Email: [paula@wildlandsconservancy.org](mailto:paula@wildlandsconservancy.org)  
[www.wildlandsconservancy.org](http://www.wildlandsconservancy.org)



Wildlife Corridor, Coal Canyon. Photo: The Wildlands Conservancy



# Yucaipa Valley Conservancy

## Projects and Programs

The Yucaipa Conservancy has been involved in a very exciting and successful project - the creation of a State Park in an area known as Wildwood Canyon in San Bernardino County. The primary area for acquisition is 3,500 acres, and includes an abundance of wildlife, historic and archaeological sites, beautiful canopied oak forests, and an extensive system of riding and hiking trails.

## Benefits to California State Parks

The Conservancy is working with California State Parks to secure additional acreage for the Wildwood Canyon Project

**When** Opportunity driven

## Contact Information

Frank Sissons, Chairman of the Board  
Yucaipa Valley Conservancy  
P.O. Box 102  
Yucaipa CA 92399  
Phone: 909 790-2226  
[www.conservancy.homestead.com](http://www.conservancy.homestead.com)



Entrance to Wildwood Canyon. Photo: Yucaipa Valley Conservancy