

Interpretation and Education Partners

Interpretation and education about California’s natural, cultural and recreational resources is often a collaborative process. California State Parks lends artifacts and exhibits to established visitor centers and museums, sharing department resources and expertise to help educate the public. Cooperating Associations work hand in hand with California State Parks to interpret park resources. Non-profit organizations help educate the public by bringing students to California State Parks to experience and study California’s unique resources up close and personal. Recreation enthusiasts help educate the public on safety for both the resources and the visitors. The following is a representative sampling of Interpretation and Education Partners and is not purported to be a complete list.

ATV Safety Institute

Projects and Programs

The ATV Safety Institute (ASI) was formed as a non-profit division of the Specialty Vehicle Institute of America® (SVIA) to implement an expanded national program of all terrain vehicle (ATV) safety education and awareness. Their goal is to promote the safe and responsible use of ATVs, thereby reducing accidents and injuries.

Benefits to California State Parks

The ASI system supplies the core curriculum to State Park employees who provide safety training to kids aged 12-16 in the ATV portion of the Off-Road Police Activities League program.

When

Programs are conducted Year-round at State Vehicular Recreation Areas (SVRA).



Contact Information

ATV Safety Institute
2 Jenner St, Ste 150
Irvine CA 92618-3806
Phone: 949 727-3727
www.atvsafety.org



SVIA Training Session. Photo:ASI

California Environmental Education Interagency Network

Projects and Programs

California State Parks is an active member of the California Environmental Education Interagency Network (CEEIN), a state government consortium of environmental educators representing departments, boards and commissions of the California Department of Education, California Environmental Protection Agency, the Resources Agency of California and the Department of Food and Agriculture. CEEIN fosters broad understanding of the State's environmental and cultural resources while affirming that education is essential to the development of understanding and respect for the environment. The CEEIN partnership provides a forum for its members to share resources, programs and materials with California's public schools and students in grades kindergarten through university. This partnership is solidified by a memorandum of understanding, which has been signed by each secretary of the aforementioned agencies.

Benefits to California State Parks

The primary goals of CEEIN are to develop a unified response to the environmental education needs of California's educators and local governments, and to assist with statewide educational reform movements. CEEIN members meet monthly to discuss and share information about national and statewide environmental education efforts. CEEIN accomplishments include the Curricula and Compendia Project; a partnership with The Walt Disney Company to promote a statewide environmental education program and competition for fifth grade classes called the Jiminy Cricket's Environmental Challenge; supporting the California Regional Environmental Education Community (CREEC) network; establishing an outreach program that includes development and distribution of the CEEIN brochure, conducting workshops designed specifically for educators, and staffing exhibits booths at environmental conferences and fairs.

When

Year-round

Contact Information

Donna Pozzi
Chief of Interpretation and Education
California State Parks
P.O. Box 942896
Sacramento CA 94296-0001
Phone: 916 653-4643
Email: dpozz@parks.ca.gov
www.calepa.ca.gov/education/CEEIN



California Exhibition Resources Alliance

Projects and Programs

The California Exhibition Resources Alliance (CERA) is a network of professionally operated museums and cultural organizations that collaborate to create and tour smaller, affordable, high quality exhibitions that enhance civic engagement and human understanding.

CERA exhibitions explore history, art, natural science, and contemporary issues through photography, artifacts, stunning image and text panels, and hands-on educational materials.

Most recently, an exhibit developed jointly by the California State Parks and the California Native American community entitled "Discovery, Devastation, Survival: California Indians and the Gold Rush" has toured throughout California. The exhibition includes:

- 19 exhibition panels with text and graphics (approximately 75 linear feet)
- Exhibition manual
- Press kit
- Educational materials

Benefits to California State Parks

California State Parks lends artifacts and exhibits to established visitor centers and museums, sharing department resources and expertise to help educate the public. Reciprocal exhibits are also available, allowing State Parks to benefit from exhibits created by other organizations.



When

Year-round

Contact Information

Lisa Eriksen, Executive Director
California Exhibition Resources Alliance
4365 Terrabella Wy
Oakland CA 94619
Phone: 510 336-7062
Fax: 510 336-1613
Email: ceraexhibits@earthlink.net
www.ceraexhibits.org



Hands on program at the Museum of History and Art, Ontario, CA. Photo: CERA

California Institute for Biodiversity

Projects and Programs

The California Institute for Biodiversity (CIB) is a Bay Area-based non-profit organization dedicated to improving science literacy, environmental education, and the appropriate use of technology in classrooms throughout the state. By providing high-quality software for students as well as support materials and in-depth professional development opportunities for educators, CIB has improved science education in California schools.

Benefits to California State Parks

In 2003 California State Parks and the California State Parks Foundation joined with the CIB to launch the Eureka! Series. This unique education program uses engaging learning activities and hands-on field experiences focused on California's environment to advance middle school students' science and ecological literacy. Students learn about local resources and issues, with opportunities for investigation and stewardship activities at State Parks that preserve fine examples of bio-regions.

The Coast Alive! – Land-Sea Interface program is the second regional program in the Eureka! Series. The program focuses on California's coastal ecosystems from San Luis Obispo to Sonoma County. The components of the Eureka! Series include: interactive CD-ROMs and teacher manual (both carefully aligned with California's academic standards), and hands-on training workshops for teachers. Once teachers receive training, students participate in hands-on learning opportunities at state parks that reinforce their classroom learning.

When

School year

Contact Information

Carol Baird, PhD, Executive Director
California Institute for Biodiversity
4100-10 Redwood Rd #325
Oakland CA 94619
Phone: 888 325-3288
www.calalive.org
www.eurekaseries.org



California League of Park Associations

Projects and Programs

The California League of Park Associations (CALPA) serves as the umbrella organization for California State Park cooperating associations. The association presents an annual conference, provides resource materials, and publishes a newsletter.

Benefits to California State Parks



Visitor Center, Humboldt Redwoods SP

CALPA can act as an unofficial conduit for information between CSP and association members. CALPA conferences provide valuable training opportunities.

When

Year-round



Pigeon Point Light Station SHP

Contact Information

President (2006) - Randy Widera, Friends of
Santa Cruz State Park
144 School St
Santa Cruz CA 95060
Phone: 831 429-1840
Fax: 831 429-6748
randy@scparkfriends.org
www.calparksleague.org



Mt. Tamalpais Interpretive Association sales area

The California Museum for History, Women and the Arts

Projects and Programs

Dedicated to telling the rich history of California and its unique influence on the world of ideas, innovation, art and culture, the California Museum for History, Women and the Arts seeks to engage, educate and enlighten a broad public audience about California history. The Museum brings the state's rich and diverse history alive through the extraordinary collection of the California State Archives and other collections throughout the state. The Museum also promotes the state's artistic and cultural heritage.

Benefits to California State Parks



"Treasures from the Trunk." Photo: CA Museum for History, Women and the Arts

California State Parks has collaborated with the Museum on several exhibits, including "California's Remarkable Women," "Treasures from the Trunk" and "Latinas: The Spirit of California." The increased visibility of artifacts from the department's collections in these exhibits heightens public awareness of the cultural resources the department maintains. The exhibits are valuable tools in the interpretation of the state's heritage.

When
Opportunity driven

Contact Information

Kelly Ann Bitz, Development
Coordinator
California Museum for History,
Women and the Arts
1020 O St
Sacramento CA 95814
Phone: 916 653-7524
www.californiamuseum.org



"California's Remarkable Women." Photo: CA Museum for History, Women and the Arts

Cooperating Associations

Projects and Programs

Cooperating Associations are non-profit charitable organizations dedicated to enhancing the educational and interpretive programs in California State Parks. Collectively the network consists of 80 associations in 278 state parks. *(Examples of four active cooperating associations may be found on the following pages. A complete list of cooperating associations can be found in the appendix.)*

Cooperating association accomplishments generally fall into three categories:

- Facilities - Associations help the state to build, restore or furnish visitor centers, museums, historic buildings and exhibit shelters.
- Programs - Interpretive programs supported by associations include guided tours, nature walks, Junior Rangers, special events, living history and environmental living programs. Hundreds of special events that occur annually are due to the dedicated partnership between cooperating associations, department staff and volunteers.
- Publications - Books, brochures, newspapers and videos about the natural and cultural history of local units that are funded by most, if not all, associations. As parks become more popular and interpretive needs increase, many associations are expanding or upgrading sales areas to offer a wider assortment of quality educational and interpretive materials.

Benefits to California State Parks

These associations, with more than 26,000 members, provide critical funding of more than 10 million dollars annually for educational and interpretive needs that are impossible for state parks to meet.

When

Year-round

Contact Information

John D. Mott, Cooperating Associations Program Manager
Interpretation and Education Division, California State Parks
P.O. Box 942896
Sacramento CA 94296
Phone: 916 654-5397
http://www.parks.ca.gov/?page_id=976

California State Railroad Museum Foundation

Projects and Programs

The California State Railroad Museum Foundation (CSRMF) supports the Railroad Museum's mission: to collect, preserve and interpret selected aspects of railroads and railroading, with an emphasis on California and the West, for the education, enjoyment and entertainment of the widest possible audience.

The CSRMF provides funding for ongoing support of numerous programs, both at the museum's Old Sacramento location and at the affiliated Railtown 1897 State Historic Park in Jamestown. The programs supported by CSRMF are exhibits, excursion railroad operations, library operations, membership, grant development, retail operations, facility rental, filming, interpretive publications, and volunteer recognition. The annual gross revenue of the CSRMF exceeds \$3 million.

Benefits to California State Parks

The CSRMF raises and manages funds to support the California State Railroad Museum and assist California State Parks in carrying out the mission of the museum.

When

Year-round

Contact Information

Pamela Horan, Executive Director
California State Railroad Museum
Foundation

111 I St

Sacramento CA 95814

Phone: 916 445-5998

Fax: 916 445-5982

www.californiastaterailroadmuseum.org

California State Parks Partners



California State Railroad Museum



Railtown 1897 SHP

Doheny State Beach Interpretive Association

Projects and Programs

The Doheny State Beach Interpretive Association actively supports the interpretive programs of Doheny State Beach. Association funding supports an interpretive center, including five aquariums, an indoor tide pool and many exhibits.



Benefits to California State Parks

The Doheny State Beach Interpretive Association provides significant financial support that enables school programs, campfire programs, self guided tours and the Junior Ranger Buddies program.



Garibaldi. Photo: Tom Haight

When

Year-round

Contact Information

Steve Stirrett, President
Doheny State Beach Interpretive Association
25300 Dana Point Harbor Drive
Dana Point CA 92629
Phone: 949 496-6172
www.dohenystatebeach.org



Interpretive Program, Doheny SB Visitor Center

Friends of San Diego Wildlife Refuges, Inc.

Projects and Programs

The Friends of San Diego Wildlife Refuges, Inc., a new cooperating association, partners with California State Parks and the US Fish and Wildlife Service for the benefit of Tijuana Estuary and other wildlife refuges in San Diego County. The Friends raise funds for interpretive and educational programs through grant, retail sales and donations.

Benefits to California State Parks

The Friends of San Diego Wildlife Refuges, Inc., raises funds for interpretive and educational programs at the Wildlife Refuges and State Parks in San Diego County.

When

Year-round

Contact Information

Margie Stinson, President
Friends of San Diego Wildlife Refuges, Inc.
301 Caspian Way
Imperial Beach CA 91932
Phone: 619 575-2704
www.friendsofsdrefuges.org



Snowy Plover



Tijuana Estuary

Waddell Creek Association

Projects and Programs

The Waddell Creek Association operates the Rancho del Oso Nature and History Center. The center is in the southern part of Big Basin Redwoods State Park, where Waddell Creek flows into the Pacific Ocean. Through exhibits and programs, the Center provides educational and recreational activities focused on the rich natural and cultural history of the area. The Center is a former ranch house and features exhibits of native flora and fauna and local history. Nature-oriented art exhibits complement an active and varied program of events for young and old including astronomy and nocturnal creatures night programs, Ohlone craft demonstrations and fireside talks. A recent major addition is a remarkable grizzly bear exhibit symbolizing the important role grizzlies played in the history of the area.

Benefits to California State Parks

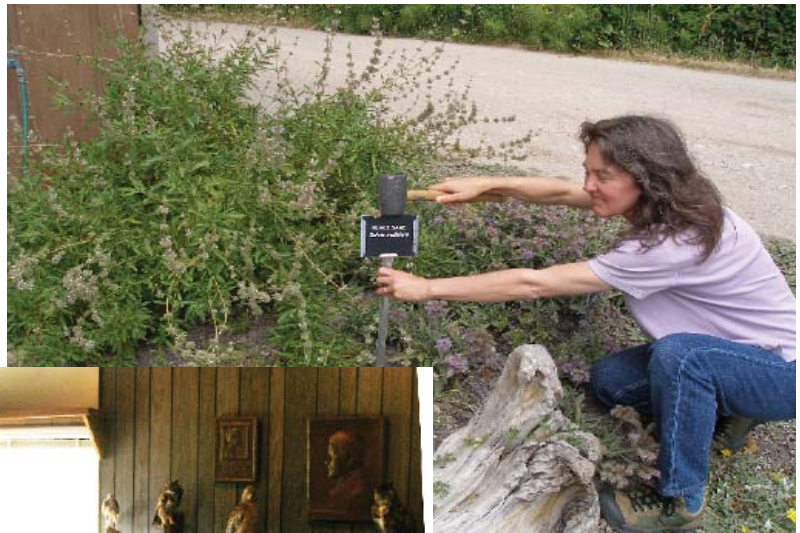
The association is a source of financial and community support that is essential to providing quality public service and interpretation at the Rancho Del Oso sector of Big Basin Redwoods State Park.

When

Year-round

Contact Information

Varyl White, Interpretive Specialist
Rancho del Oso Nature and History Center
3600 Highway 1
Davenport CA 95017
Phone: 831 427-2288



Photos: Waddell Creek Association

Interpretive Concession Contracts

Projects and Programs

California State Parks contracts with non-profit organizations and private entities to provide interpretation and unique educational services to park visitors. These services would not be offered to the public without the assistance of these talented organizations and individuals:



Columbia SHP

Park Unit	Partner	Service Provided
Andrew Molera SP	Ventana Wildlife Society	Park operations and interpretation
California Citrus SHP	California Citrus Heritage Association	Park operations and interpretation
China Camp SP	Historic Village Operations	Interpretive retail
Columbia SHP	Various	Historic retail goods and services
Folsom Lake SRA	Associated Students of CSU Sacramento	Aquatic center operations
Fremont Peak SP	Fremont Peak Observatory	Interpretive programs
Indio Hill Palms SP	Covered Wagon Tours	Interpretive programs and park operations
Mendocino Woodlands Outdoor Center	Mendocino Woodland Camp Association	Park operations
Monterey SHP	Various	Interpretive programs and historic facility restoration
Pigeon Point Light Station	American Youth Hostel Association	Hostel operations
Point Cabrillo Light Station	North Coast Interpretive Association	Lighthouse restoration and interpretation



Whaler's Cottage, Monterey SHP

Interpretive Concession Contracts (continued)

Park Unit	Partner	Service Provided
San Juan Bautista SHP	Artist in Residence	Interpretive programs
Sugarloaf Ridge SP	Valley of the Moon Observatory Association	Interpretive programs
Tahoe SRA	North Tahoe Historical Society	Museum and park operation
Wassama Roundhouse	Wassama Association	Park operations and interpretation

Benefits to California State Parks

Interpretive activities and experiences for state park visitors

When

Year-round

Contact Information

Visit the Concession Program's web pages at www.parks.ca.gov/concessions, or contact the park units listed above for additional information on each partner.



Pigeon Point Light Station SHP

Motorcycle Safety Foundation

Projects and Programs

The Motorcycle Safety Foundation (MSF) provides rider safety education for motorcycle riders, and provides education on responsible recreation. They have established a comprehensive, research based system that promotes life-long learning for riders, as well as continuous professional development for its coaches. They also provide technical assistance to state training and licensing programs.

Benefits to California State Parks

The Motorcycle Safety Foundation supplies the core curriculum to State Park employees, who then provide safety training to kids aged 10-16 in the motorcycle option of the Off-Road Police Activities League program

When

Programs are conducted Year-round at State Vehicular Recreation Areas.



Contact Information

Rob Gladden, Project Manager
California Motorcyclist Safety Program
2 Jenner St, Ste 150
Irvine CA 92618
Phone: 949 727-3227
Fax: 949 727-4217
www.ca-msp.org



Photo: Motorcycle Safety Foundation

Parks Online Resources for Teachers and Students

Projects and Programs

Parks Online Resources for Teachers and Students (PORTS) is a distance interpretation and education program developed as a collaborative effort between public schools, private industry, cooperating associations and California State Parks. This series of units of study uses the power of video conferencing and California's K-12 High Speed Network to deliver academic content standards-based instruction in the context of California State Parks. PORTS allows students, regardless of their geographic location or economic status, to talk face to face with rangers from parks throughout the state. The program provides fully developed units of study, including all the resources (lesson plans, scoring rubrics, pre and post assessments, digital video and images, etc.) needed for the support, structure, preparation, and follow-up of the live, video conference sessions. The program is designed to meet the goals of California State Parks and California public education.



Benefits to California State Parks

PORTS allows California State Parks to deliver its message to an audience with whom it has traditionally had little success communicating. Being able to speak directly to a vastly diverse audience of young people from a wide range of geographic and socio-economic groups furthers a number of the department's strategic initiatives. The program also has the ancillary benefit of creating professional relationships at a managerial level with local education officials that can then be employed by local park staff to further their programs.

Schools benefit by having professionally developed, compelling presentations delivered to them at no cost. The students are taught the academic content standards they are required to learn while also getting a deeper understanding of the concepts presented.

Private industry benefits by having their products showcased in an environment where their value can be seen by prospective customers and their representatives can forge relationships with school officials that may result in future business opportunities.

Examples:

PORTS has mutually beneficial partnerships with scores of entities. Here a few representative examples of those partnerships:

Imperial County Office of Education (ICOE)

California State Parks and the ICOE are partners in a federally funded "Teaching American History" grant program. This three-year professional development grant provides

training to history teachers. California State Parks benefits by the recognition and notoriety within the education community and by receiving a great deal of technological equipment that it will keep at the conclusion of the training. The ICOE benefits by having “content experts” available for their training and by the use of California State Park facilities and resources.

Humboldt County Office of Education (HCOE)

California State Parks and the HCOE are partners in an initiative to use technology to bring compelling content to a largely rural and isolated population of students. The HCOE has contributed 40 percent of a teacher personnel year to work with park staff to implement the PORTS program throughout Humboldt County. The State Parks benefit by creating close relationships with school districts throughout the county and by delivering our message to the student population. The schools benefit by learning to use technology to communicate with distant entities and by having “content experts” to help them teach academic content standards.



Desert Sands Unified School District students learn about elephant seals via a PORTS presentation from Seacliff State Beach

Sonora High School District (SHSD)

California State Parks and the SHSD are partners in a program to produce PORTS units of study from their Cassina High, the district’s continuation high school. With the assistance of park staff the students are taught to use the technological equipment necessary to produce videoconferencing presentations. The students then act as the IT staff for the programs. The local park staff supplies the personnel to make the presentations. The two organizations work together on fund raising and program development. California State Parks benefit by having their message reach the local community as well as delivering thematic programs to distant students. The SHSD benefits by having a unique vocationally based program that teaches skill to their students.

Polycom

California State Parks and Polycom, a technology company known for its audio and video conferencing equipment, are partners in an effort to establish the PORTS pro-

gram throughout California schools. Polycom often supplies expertise to aid in the deployment of the program and provides assistance in grant writing. Polycom has also loaned a great deal of equipment to schools so that the schools could participate in PORTS. California State Parks benefits by being able to provide more PORTS programs and Polycom benefits by the possibility that schools will later buy their equipment after seeing its value during a PORTS program.

AT&T

California State Parks and AT&T, a communications company, are partners in an effort to establish the PORTS program throughout California schools. AT&T provides "Education Advocates" for many of the PORTS training programs. These AT&T employees are experts in the use of video conferencing in educational environments. California State Parks benefit by having these highly effective and professional partners available in our training, and AT&T benefits by establishing relationships with schools that may later purchase their equipment and services.

California's K-12 High-Speed Network (HSN)

California State Parks and the HSN, a state funded, very powerful and extensive IT network connecting California schools, are partners in an effort to establish the PORTS program throughout California schools. California State Parks benefits because HSN provides California State Parks with staff, equipment, expertise, and network access to deliver PORTS throughout the state. The HSN benefits because we provide the type of content that this network was funded to deliver. PORTS acts as one of the "poster boys" to show the benefits the HSN can bring to schools.

California State University, Monterey Bay (CSUMB)

California State Parks and CSUMB are partners in an effort to establish the PORTS program at Seacliff State Beach and deliver it to students throughout California. CSUMB has provided students and professors to aid in the planning, development, and construction of a professional video conferencing studio, including chroma-key technology. CSUMB benefits by providing a remarkably engaging manner to teach their students, and California State Parks benefits by having first class, highly technical work accomplished at a very low cost.

When On-going

Where Programs are delivered to classrooms throughout the state from various parks. In the 2006/2007 school year most of the programs will be delivered from Seacliff State Beach, the State Capitol Museum, Crystal Cove State Park, and Anza-Borrego Desert State Park.

Contact Information

Joe von Herrmann
Interpretation and Education Division, California State Parks
Phone: 916 947-8073
Email: jvonh@parks.ca.gov
www.ports.parks.ca.gov