

# YOUR CAREER IN CALIFORNIA STATE PARKS



## Our Mission

The mission of California State Parks is to provide for the health, inspiration and education of the people of California by helping to preserve the state's extraordinary biological diversity, protecting its most valued natural and cultural resources, and creating opportunities for high-quality outdoor recreation.



California State Parks supports equal access. Prior to arrival, visitors with disabilities who need assistance should contact the park they plan to visit. This publication is available in alternate formats by contacting:

**CALIFORNIA STATE PARKS**

**P.O. Box 942896**

**Sacramento, CA 94296-0001**

For information call: (800) 777-0369

(916) 653-6995, outside the U.S.

711, TTY relay service

[www.parks.ca.gov/jobs](http://www.parks.ca.gov/jobs)

Discover the many states of California.™

California State Parks  
Personnel Services Office  
1416 Ninth Street, Room 1018  
Sacramento, CA 95814  
(916) 653-6644

© 2010 California State Parks

## *A Career in State Parks*

- ... creates a lasting future
- ... protects & preserves resources
- ... enriches lives



*Museum Curator,  
State Museum Resource Center*

# Why Work for California State Parks?

We like what we do, and our job satisfaction is high!

We make a difference in our own lives and help ensure the presence of precious resources in our state parks for the enjoyment of generations to come.

Whether you work in the fields of interpretation and

education, recreation, law enforcement, cultural or natural resources, administration, operations or facility maintenance, you can be assured of a rewarding career path, a secure retirement with wonderful memories, and a lasting legacy.

## What We Do

California State Parks preserves and protects more than 1.5 million acres of land and 280 miles of coastline in 278 state park units. Nearly eighty million visitors enjoy our state parks each year. Maintaining and restoring state parks takes a tremendous team effort. Come, join our team!

*Image: In-house Visitor Services Training, Asilomar State Beach*



## *If you enjoy—*

- Working off the beaten path
- Administering grants
- Planning and design
- Landscaping
- Working with children
- Using your hands & tools
- Saving lives
- Engaging with people
- Protecting our natural & cultural resources—

*Then we have a job for you!*



*Visitor Interaction*

From the guide leading a nature walk to the maintenance worker repairing a leaky faucet, visitor relations is the job of every employee. People from all over the world come to share the splendor of California's redwood parks, beaches, historic parks and natural preserves. Enjoy meeting and sharing your passions with others through a job with California State Parks.

*Natural Resources*



Do you want to restore and protect vital habitat for California's native plants and animals? We fight invasive species, use fire to restore landscapes, control erosion, repair stream habitats and protect water quality. California State Parks offers rewarding careers in environmental science and natural resource management.



*Cultural Resources*



Interested in historic preservation, archaeology, or museums? California State Parks manages and preserves historic sites and buildings—as well as a vast collection of archaeological specimens, historic artifacts, and archival documents.



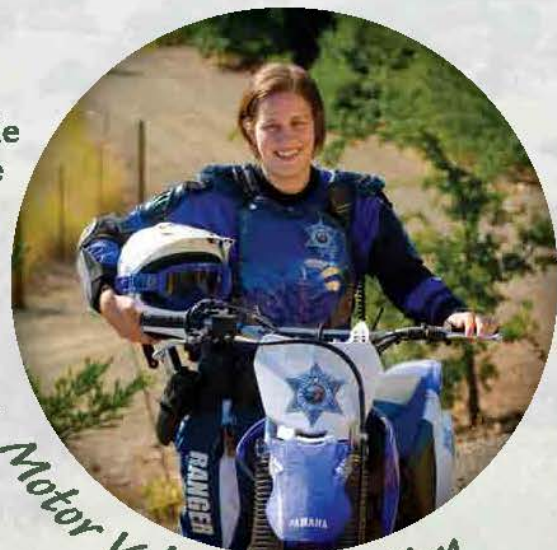
## *Park Maintenance*



People who like to work with their hands will enjoy maintenance opportunities working outdoors in the fresh air. Help restore and maintain more than 15,000 campsites, 3,700 miles of trails, and 1,500 historic buildings—all conserved in state parks.

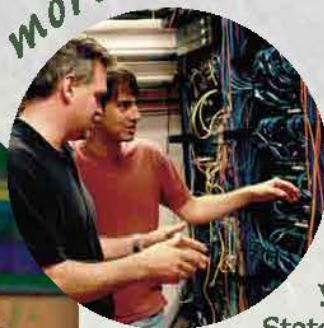


Our Off-Highway Motor Vehicle Recreation program provides safe riding areas for off-road enthusiasts and protects our valuable natural and cultural resources. Come and get dirty with us as we keep everyone safe, including native plants and animals.



## *Motor Vehicle Recreation*

## *And much more!*



Whether you are a computer whiz or an outdoor enthusiast, you can find a niche in California State Parks. Your office could be in a railroad roundhouse, a stand of giant redwoods, a tidepool-edged beach, or an adobe mission.

# *How to Get a Job with California State Parks*

To be hired, you must go through the State Civil Service examination and hiring process. First, you take an exam and earn a place on the eligibility (hiring) list for the classification (job title) that interests you. You may apply for a vacant job only after you are placed on the eligibility list. By law, State agencies can only hire applicants from this list. The State Civil Service selection process is open to all people—regardless of race, color, creed, national origin, ancestry, sex, marital status, disability, religious or political affiliation, age or sexual orientation. California residency is not required,

and U.S. citizenship is required only for peace officer (Ranger/Lifeguard/Communication Dispatcher) jobs. Contact one of our recruiters to discuss how they found their jobs and what their work is like. You can find a recruiter near you at: [www.parks.ca.gov/recruiting](http://www.parks.ca.gov/recruiting)

To view a Career Opportunity Bulletin listing current vacancies and exams: [www.parks.ca.gov/jobs](http://www.parks.ca.gov/jobs)

For a partial list of State Parks job classifications: [www.parks.ca.gov/careers](http://www.parks.ca.gov/careers)



*Lifelong Learning* California State Parks employees learn daily—whether about botany, geology, history, archaeology, biology, administration, resource management, or all the wonders of California’s diverse environment. In addition, frequent in-house training and development courses help ensure upward mobility and success at California State Parks.



## *Career Examples*

### *Benefits*

State employees enjoy a wide range of short- and long-term benefits, including competitive compensation and paid leave. A complete list of benefits can be found on the Department of Personnel Administration website at: [www.dpa.ca.gov/benefits/main.htm](http://www.dpa.ca.gov/benefits/main.htm)

#### INDOORS

- Accountant
- Architect
- Archivist
- Communications Operator
- Exhibit Designer
- Graphic Designer
- Information Officer
- IT Specialist
- Information Systems Analyst
- Labor Relations Specialist
- Librarian
- Maintenance Mechanic

- Museum Curator
- Office Assistant or Technician
- Personnel Specialist
- Program Analyst
- Programmer
- Research Analyst (Economics)
- Research Analyst (GIS)
- Restoration Worker
- Secretary
- Staff Counsel
- Staff Services Analyst
- Training Officer or Specialist

#### OUTDOORS

- Boat Operator
- Environmental Scientist
- Equipment Operator
- Forester
- Geologist
- Groundskeeper
- Heavy Equipment Mechanic
- Lifeguard
- Park Maintenance Worker
- Peace Officer/Lifeguard
- Peace Officer/Ranger
- Water & Sewage Plant Supervisor

#### INDOORS/OUTDOORS

- Archaeologist
- Carpenter
- Civil Engineer
- Electrician
- Engineering Geologist
- Guide
- Historian
- Landscape Architect
- Maintenance Assistant
- Park Interpreter
- Photographer
- Skilled Laborer