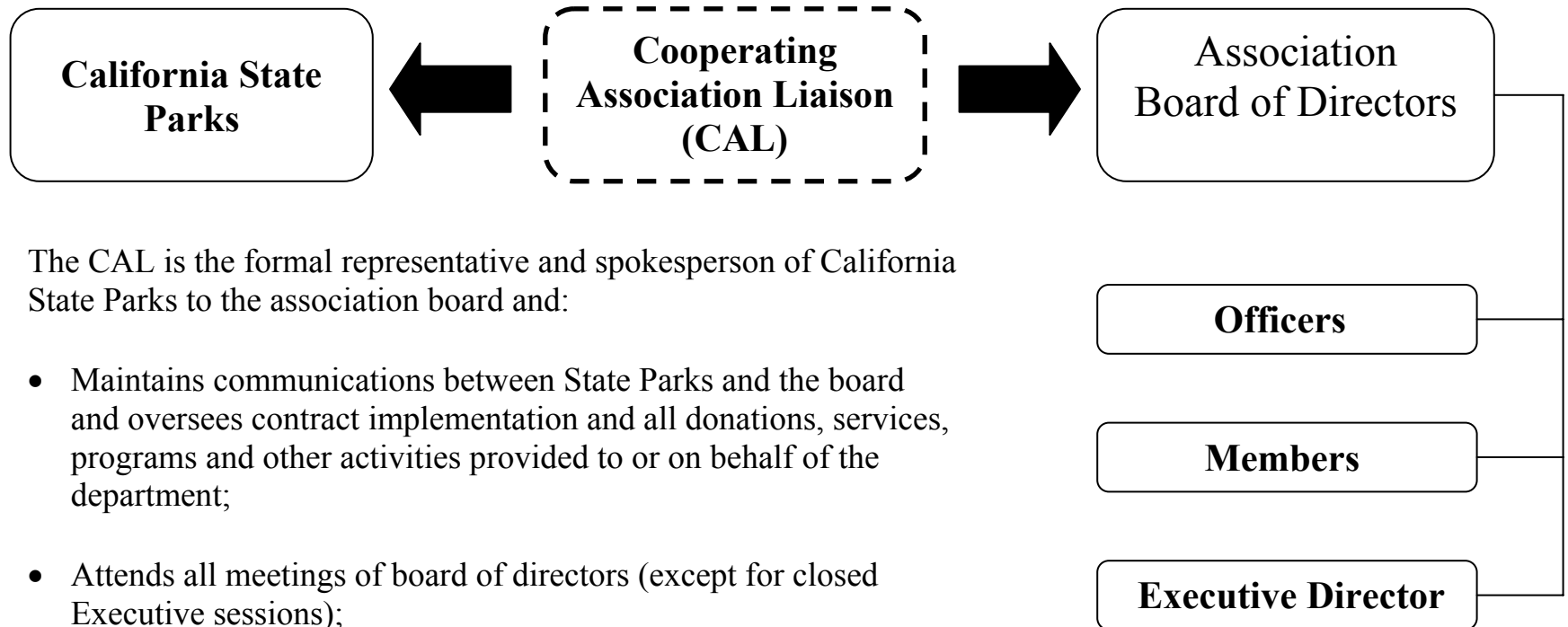


Cooperating Association Liaison (CAL) Roles



The CAL is the formal representative and spokesperson of California State Parks to the association board and:

- Maintains communications between State Parks and the board and oversees contract implementation and all donations, services, programs and other activities provided to or on behalf of the department;
- Attends all meetings of board of directors (except for closed Executive sessions);
- Grants/seek department approvals as needed;
- Serves as an advisor to the department and the association;
- Monitors and analyzes monthly association financial activity;
- Reviews and approves the association's annual report (DPR973) and submits it annually.