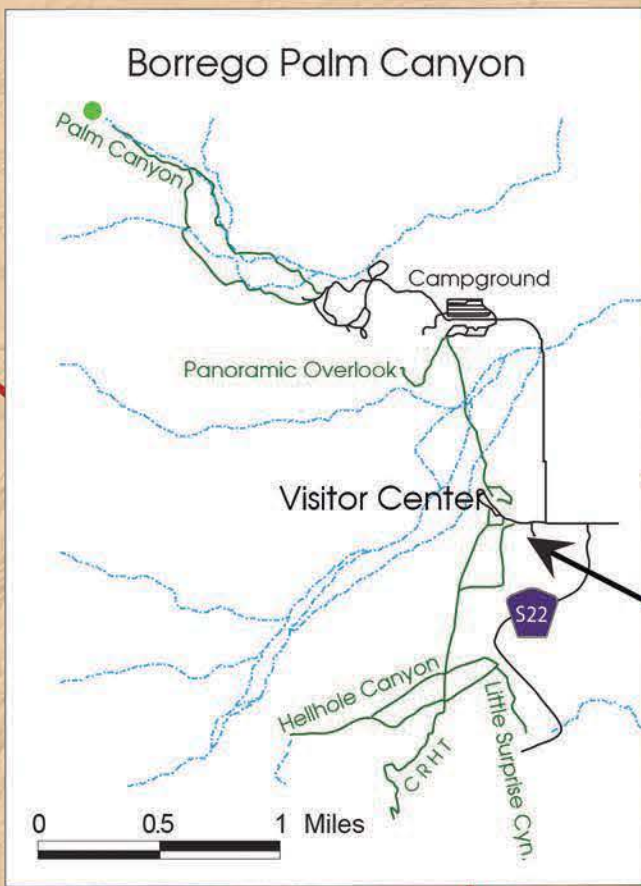




ANZA-BORREGO DESERT STATE PARK®



Coyote Canyon
Seasonal Closure
June 1 to October 1

Legend

- Railway
- Interstate Highway
- Paved Roads
- Primitive Roads
- Hiking Trails
- Historic Corridor
- Intermittent Stream
- Route to Flower Fields
- Flower Fields
- Spring
- Point of Interest
- Palm Grove Locations
- Developed Camping
- Primitive Camping
- Interstate Highway
- State Highway
- County Highway

© 2016 California State Parks

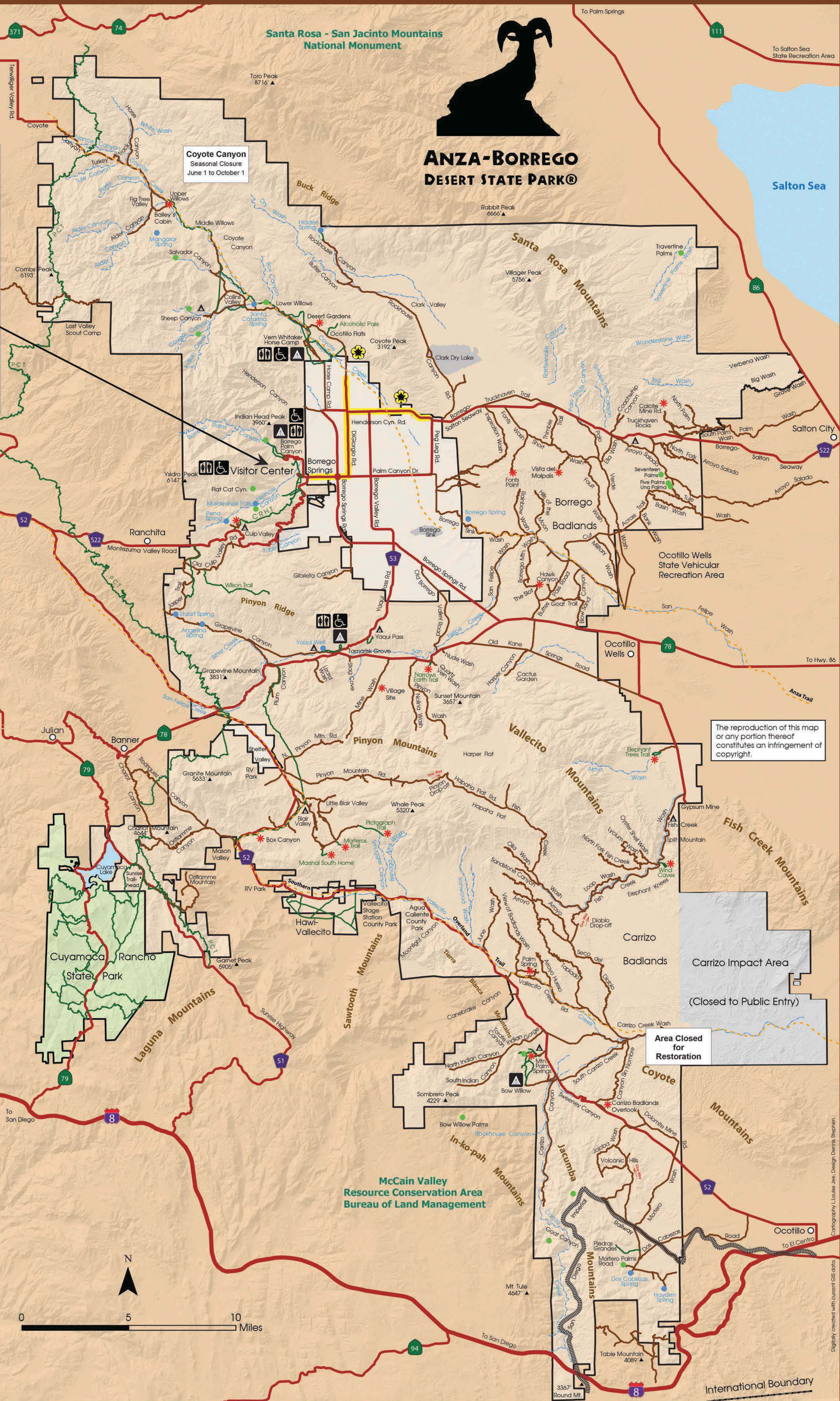
Vehicle and Travel Regulations

Vehicles:
All vehicles operated in the park must be street legal and on designated routes. Off-road travel is not permitted. OHVs are encouraged to visit nearby Ocotillo Wells State Vehicular Recreation Area.

Bicycles:
Both primitive jeep roads and paved roads are open to bicycles but remember, bikes are excluded from all hiking trails except Coyote Canyon and Hawi-Vallecito. Off-trail travel is not permitted.

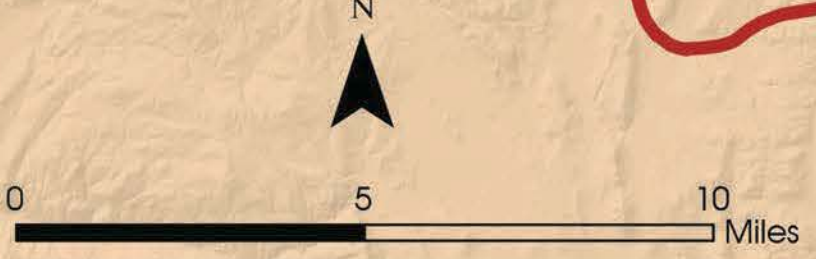
Equestrians:
Equestrians are welcome on all primitive roads, equestrian trails in Coyote Canyon and Hawi-Vallecito, the California Riding and Hiking Trail and the Pacific Crest Trail. Remember, horses are excluded from all other hiking trails. Off-trail travel is not permitted.

NOTE: When a trail joins a primitive road, the trail will follow the road.



The reproduction of this map or any portion thereof constitutes an infringement of copyright.

Area Closed for Restoration



Digitally created with current GIS data