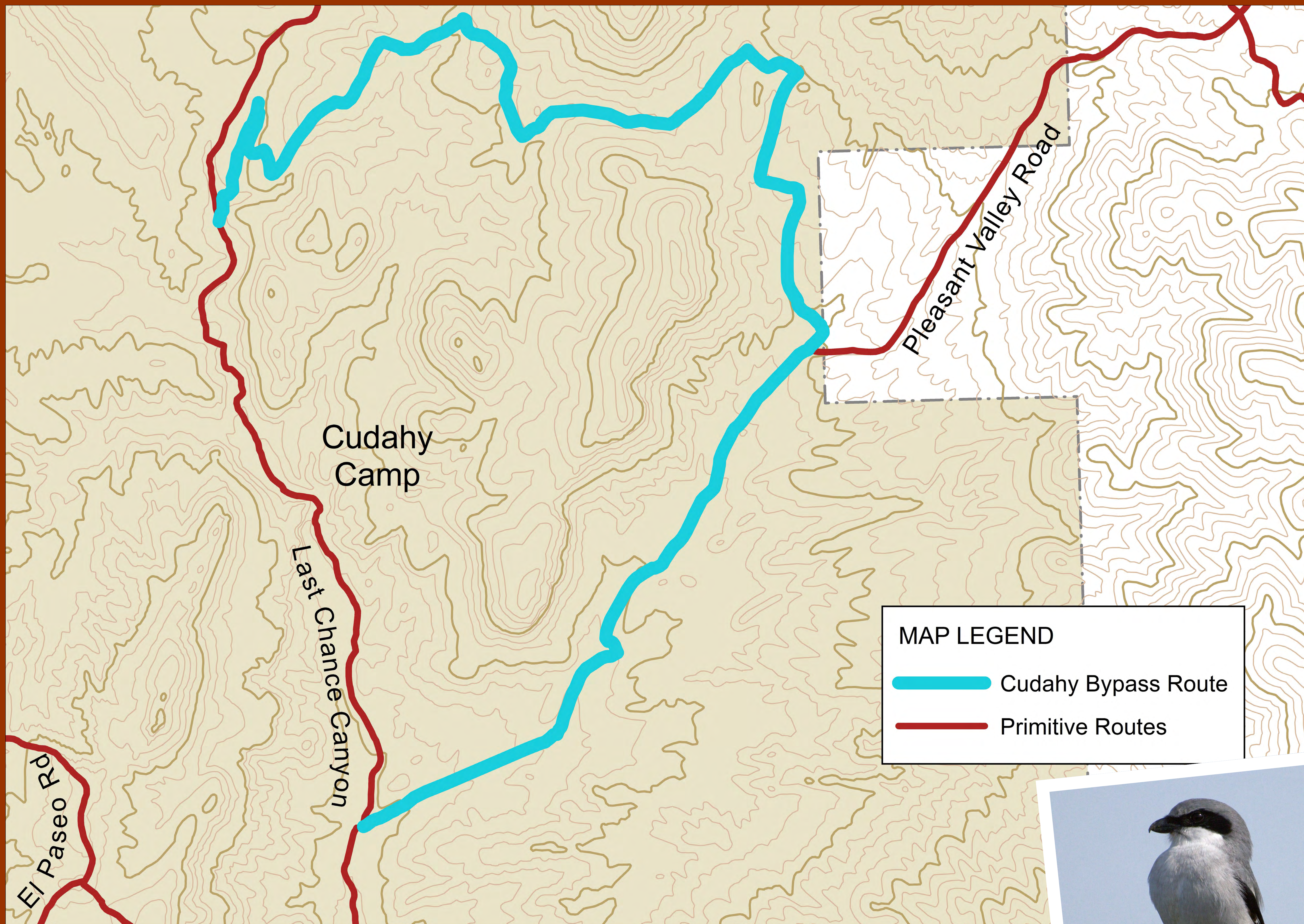


Cudahy Scenic Bypass



The newly designated Cudahy Scenic Bypass Route allows recreational users the opportunity to enjoy the unique views of the Red Buttes Mountains. Bring some binoculars to check out the birds. It is not easy to survive in the desert, but there is a home for all sorts of life.

The impressive Loggerhead Shrike calls Cudahy Camp home.



Don't let its size fool you, this small bird hunts big game. It impales its larger prey, such as mice and lizards, on thorns (or even barbed wire) to keep it safe and make it easier to pick apart.

The shrike is nicknamed the "butcher bird" for this meat hanging and aging behavior.