

Welcome

Though small in size, Point Dume State Beach at the northern edge of Santa Monica Bay has many significant features including panoramic views and opportunities to see increasingly rare plants and animals.

Two miles of scenic trails through grasslands, coastal bluff scrub, and southern foredune areas allow visitors to view an island of delicate biological integrity.

Local History

The Native Californian Chumash tribe inhabited this coastline for thousands of years and used this area as a sacred space.

In 1542, the point was an important navigational marker for Spanish explorer Juan Rodriguez Cabrillo, but only received its name in 1793 when British sea captain George Vancouver named the craggy headlands Point Dume after Father Francisco Dumetz from the Mission San Buenaventura.

During World War II, the U.S. Army used this site as an anti-aircraft artillery training area. It is believed that the top of the headlands was flattened after the war for commercial construction purposes.

In 1979, Point Dume was acquired by the State of California and is being carefully and gradually restored to its pristine state.

Natural Environment

Point Dume State Beach is 63 acres in size, and is one of the last and finest examples of coastal bluff scrub in Southern California. In 1992, a 34-acre parcel of Point Dume was designated a State Natural Preserve, one of the highest levels of protection afforded by law.

The volcanic rock cliffs provide living areas for cliff-roosting birds, and the sparkling tide pools provide habitat for rich intertidal and sub-tidal marine life including protected sea stars, octopi, anemones, sea urchins, mussels and crabs.

The Natural Preserve is also the southern-most limit for the giant coreopsis (giant sea dahlia, pictured here) and also dudleya, false heather, and quite possibly the California spineflower.

Though small, the Preserve provides habitat for a surprising amount of wildlife. A visitor may encounter coyotes, skunks, raccoons, ground squirrels and rabbits in broad daylight. One may also find five species of butterflies, six types of snakes, various lizards including the silvery legless lizard, and over one hundred types of birds including brown pelicans, plovers, wrens, roadrunners, burrowing owls, falcons, and hawks.

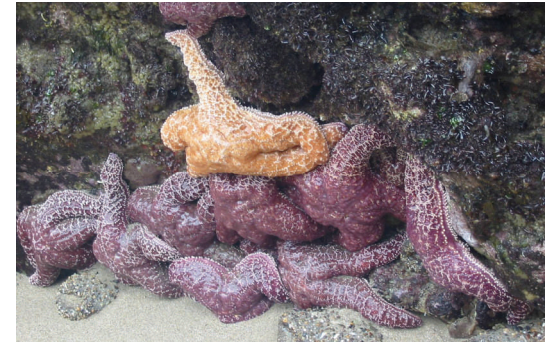


© Kenneth & Gabriella Adelman



The incredible vistas here at the point provide an opportunity to view sea lions, harbor seals and dolphins in the surf only a few dozen feet away. This promontory also provides one of the few dry-land viewing sites for migrating gray whales that lets you get close enough to count their barnacles! The best viewing time for these majestic creatures is November through April. To see the newborn whale calves migrate, be here from February on into the spring.

Important Information



Help us protect and maintain this beautiful place by following these simple rules.

Always stay on fenced trails. Going off the trails creates new paths that erode the sandy cliffs and can destroy potential wildlife habitat.

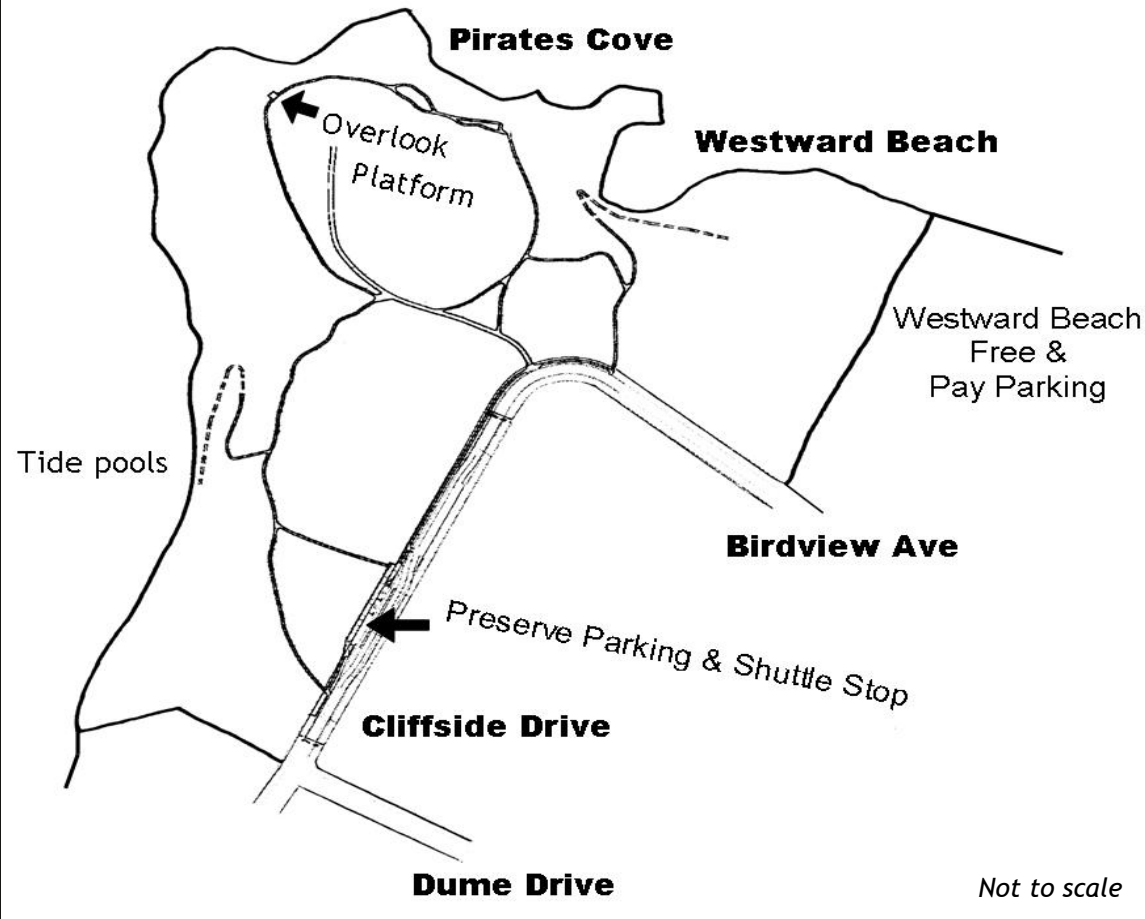
Dogs are strictly prohibited. Please don't bring your dogs to the Preserve; even the scent of a dog disrupts wildlife and prevents migrating birds from nesting.

Absolutely no fires are allowed at any time.

Please do not touch or remove anything from the tide pools. Don't turn over rocks, and walk gently—these delicate homes are very sensitive.

All natural and cultural features are protected and may not be collected, moved or harmed.

Point Dume State Beach and Natural Preserve



Trail accessibility changes seasonally, call ahead for conditions.
Dotted trails denote steps or steep inclines.

California State Parks supports equal access for individuals with disabilities. Prior to arrival, visitors who would like assistance should call the park at (310) 454-8212. To receive this publication in an alternate format, contact the Communications Office at the address below.

California State Parks
P.O. Box 942896
Sacramento, CA 94296-0001

For General Information:
(800) 777-0369
(916) 653-6995 Outside US
711, TTY Relay Service

Visitor Services

Additional parking is available on Westward Beach Road. (Take Cliffside Drive to Birdview Avenue, and park free along Westward Beach Road, or pay a fee at Westward Beach lot, and take a trail to the Preserve.) FREE shuttles on weekends, holidays and during the summer months run every 20 minutes between 10 am and 4 pm from Westward Beach Road.

There are no public phones or restrooms at the Preserve. Restrooms can be found on Westward Beach Road. Park hours are sunrise to sunset.

How You Can Help

If you would like to join the Volunteers in Parks program at Point Dume and help protect and maintain the Preserve, please call (310)457-8144.

We Would Like to Thank:

The California Coastal Commission for a Whale Tail Grant, the California Conservation Corps, Boy Scout Troup #8, California State Parks, and the Point Dume Volunteers.



POINT DUME STATE BEACH AND NATURAL PRESERVE



For information about tours,
parking or accessibility,
please call
(310) 457-8144
or
visit our website at
<http://www.parks.ca.gov>