

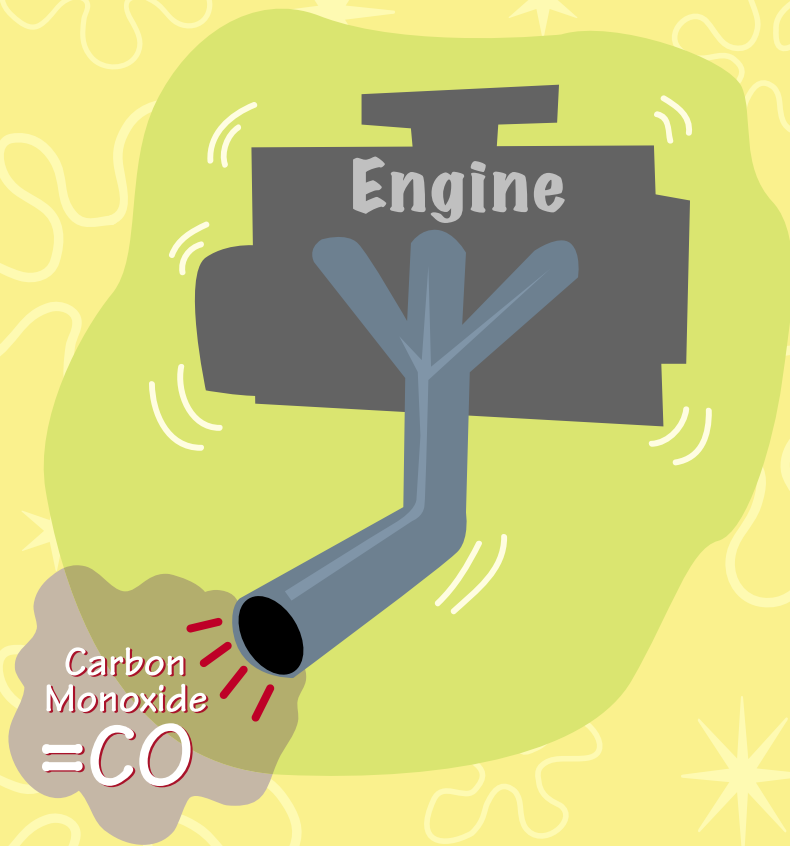
STAY OUT OF THE
**CARBON
MONOXIDE**

CO
ZONE!



Boating with your family is a great way to spend a summer day. Free and easy, just you and the water. But wait...

There's something you should know before you go!



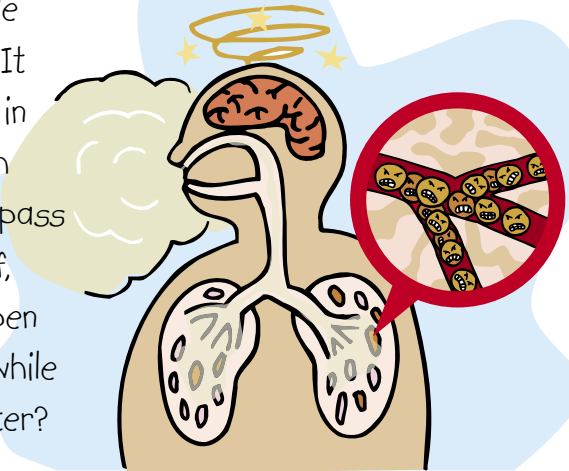
Carbon
Monoxide
=CO

Carbon Monoxide is very dangerous! Carbon monoxide is known as CO. Any boat with a motor makes CO. Carbon monoxide comes from the engine's used fuel, called exhaust. It comes out of pipes from the engine while the engine is running.



The pipes are usually at the back of the boat. Sometimes they're under water and make air bubbles near the boat.

Carbon Monoxide is a deadly gas. It replaces oxygen in your blood, which could make you pass out. Ask yourself, what would happen if you pass out while you're in the water?



Don't be fooled just because you can't see or smell carbon monoxide. It's invisible and odorless so you may never know it's there!



You've probably heard that body surfing behind a boat, called teak surfing or dragging, is a cool new sport. Think again. It's against the law, and kids have died from doing such things.



One minute they're hanging on the back of the boat, body surfing the wake, and the next minute they're gone!



Know Your SAFE ZONE!

NEVER hang around the back of the boat near the swim step or swim ladder while the boat's engine is running! That's the CO zone!



Keep a safe distance and you'll stay OUT of the...

CO
CARBON
MONOXIDE
ZONE!



Information For Parents

Use a Marine Carbon Monoxide Detector – These detectors work much like smoke alarms in houses. When they sense carbon monoxide they make a loud siren noise.

Ensure Proper Ventilation – Open hatches and a window in the cabin to allow fresh air to travel through the vessel. Also, be aware that carbon monoxide can collect under a canopy.

Inspect Exhaust System Regularly – Look and listen for leaks in the exhaust system. Check each joint for discoloration, water leaks, carbon build-up or stains. Make sure all ventilation systems are in good repair and are not obstructed, restricted, or punctured. Seal gaps around engine room and exhaust system doors, hatches, and access panels.

Avoid the Transom – The transom (back of the boat) is where carbon monoxide collects. Stay away from the transom while the vessel is idling or going slowly.

Avoid Other Idling Vessels – Idling vessels allow high concentrations of carbon monoxide to build up.

For more information about protecting your family from carbon monoxide poisoning, contact the California Department of Boating and Waterways for a copy of our pamphlet and a carbon monoxide warning decal for your boat.



You can order online at www.dbw.ca.gov, call (888) 326-2822 or write to Department of Boating and Waterways, 2000 Evergreen Street, Suite 100, Sacramento, CA 95815.