

Success Story: Gold Bluffs Beach Dune Restoration



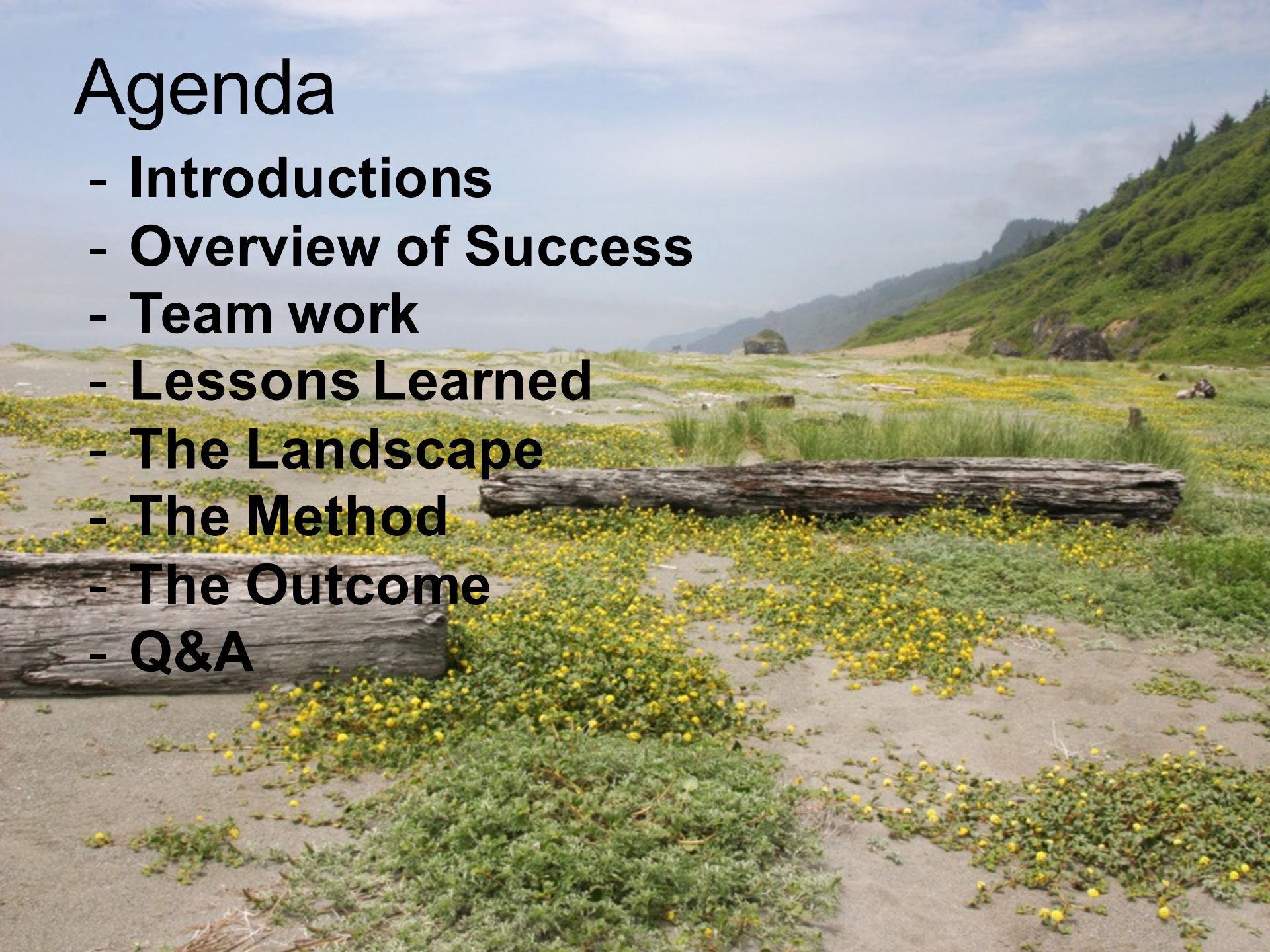
Prairie Creek Redwoods State Park Gold Bluffs Beach Dune Restoration

Project to remove European beachgrass using heavy equipment



Agenda

- **Introductions**
- **Overview of Success**
- **Team work**
- **Lessons Learned**
- **The Landscape**
- **The Method**
- **The Outcome**
- **Q&A**



Overview of success:

Largest habitat restoration of its type in California to date: 550 acres ~ 5 miles long Goal to restore dune ecosystem

- » Reduce European beach grass, measurably increasing native dune mat and improving habitat for native species.
- » Project goals achieved despite fiscal & contractual constraints and challenges.

How this project demonstrates change and transformation:

- Inclusion of all District Specialists—working together and representing each District discipline and core function.
- Recognition of the entire team effort and the transformative power of overcoming obstacles.

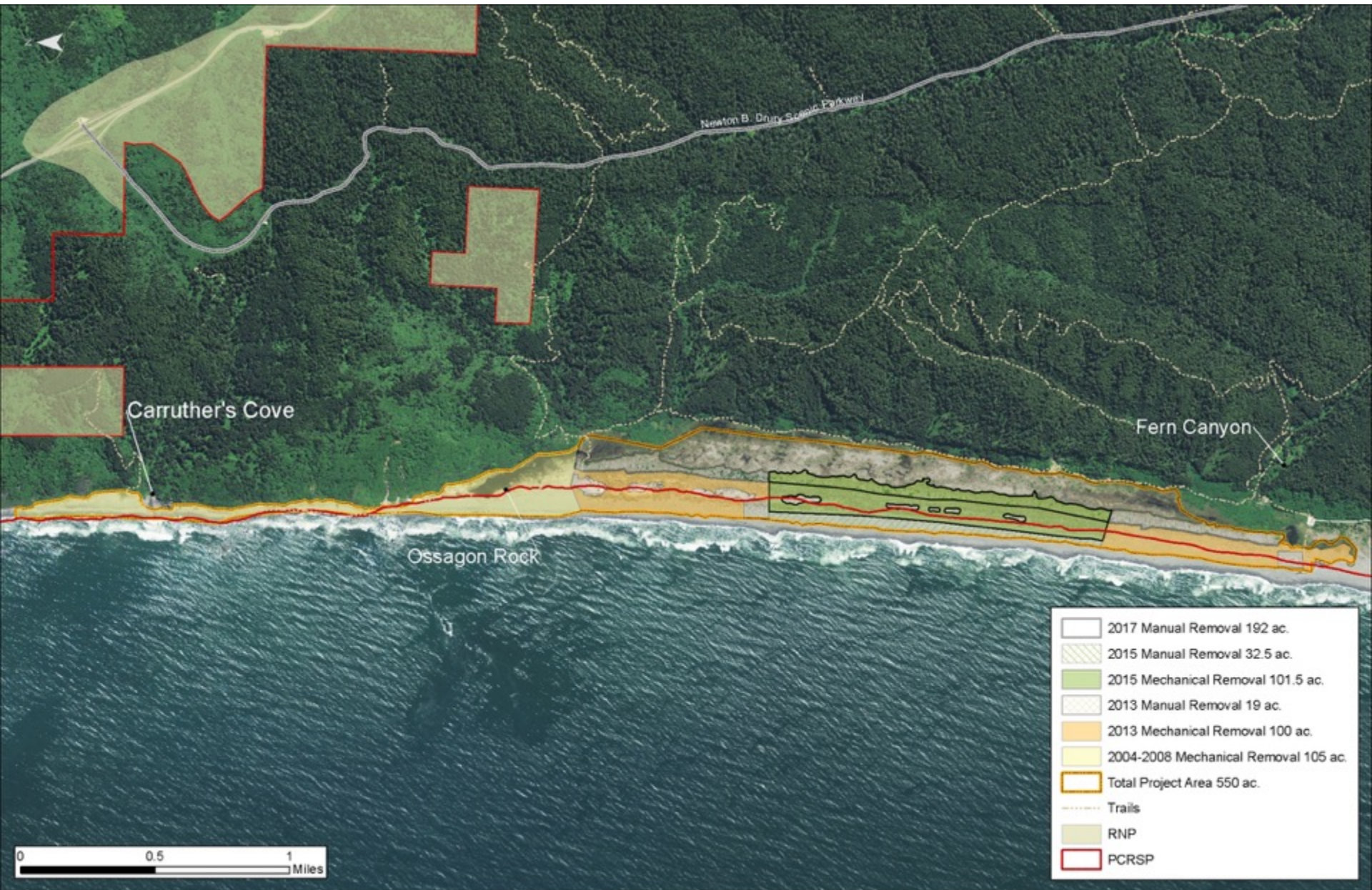


Lessons Learned:

- **Plan, but be willing to adapt & improvise**
- **Build upon in-house expertise**
- **Encourage diversity of skillsets**



**Gold Bluffs Beach Dune Restoration
Prairie Creek Redwoods State Park**



Method

Beachgrass is dug out of the top layer of sand and buried under a cap of clean sand taken from underneath it.

Beachgrass and
all roots (rhizomes) are dug up

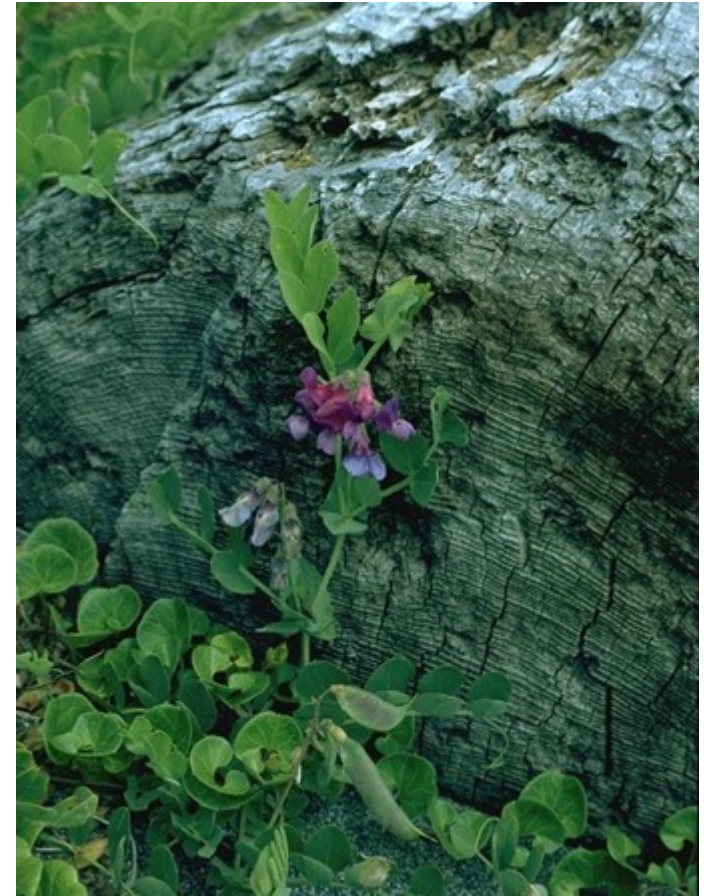


Hole is deepened to 3 meters

Special Status Species



pink sand verbena



seaside pea



Western snowy plover

North Gold Bluffs Beach Before



North Gold Bluffs Beach After



Q&A

A scenic sunset landscape with two deer silhouettes in the foreground and evergreen trees on the right. The sky is filled with soft, colorful clouds in shades of purple, pink, and orange, transitioning to a bright yellow glow near the horizon. The deer are silhouetted against the bright light of the setting sun. The foreground is dark, suggesting a grassy field or meadow.

Come Visit Your Born-To –Be-Wild Northern California Coast

Questions

If you have any questions regarding this presentation, please reach out to Jeff Bomke at jeff.bomke@parks.ca.gov.