

National Park Service
U.S. Department of the Interior



Santa Monica Mountains National Recreation Area

Developing Outreach Programs and
Materials

EXPERIENCE YOUR AMERICA

Outreach is Partnership Work



**The Satwiwa Native American
Indian Culture Center**
Interpretive Public Programs

**Students Helping to Restore
Unique Biomes (SHRUBs)**
Curriculum-based Service Learning

Academia del Pueblo Program
Community based Outreach

Key Questions (Public Audience)

- Should I be here?
- Is it safe?
- What can I expect?
- What is there to do?
- What else is there to do?



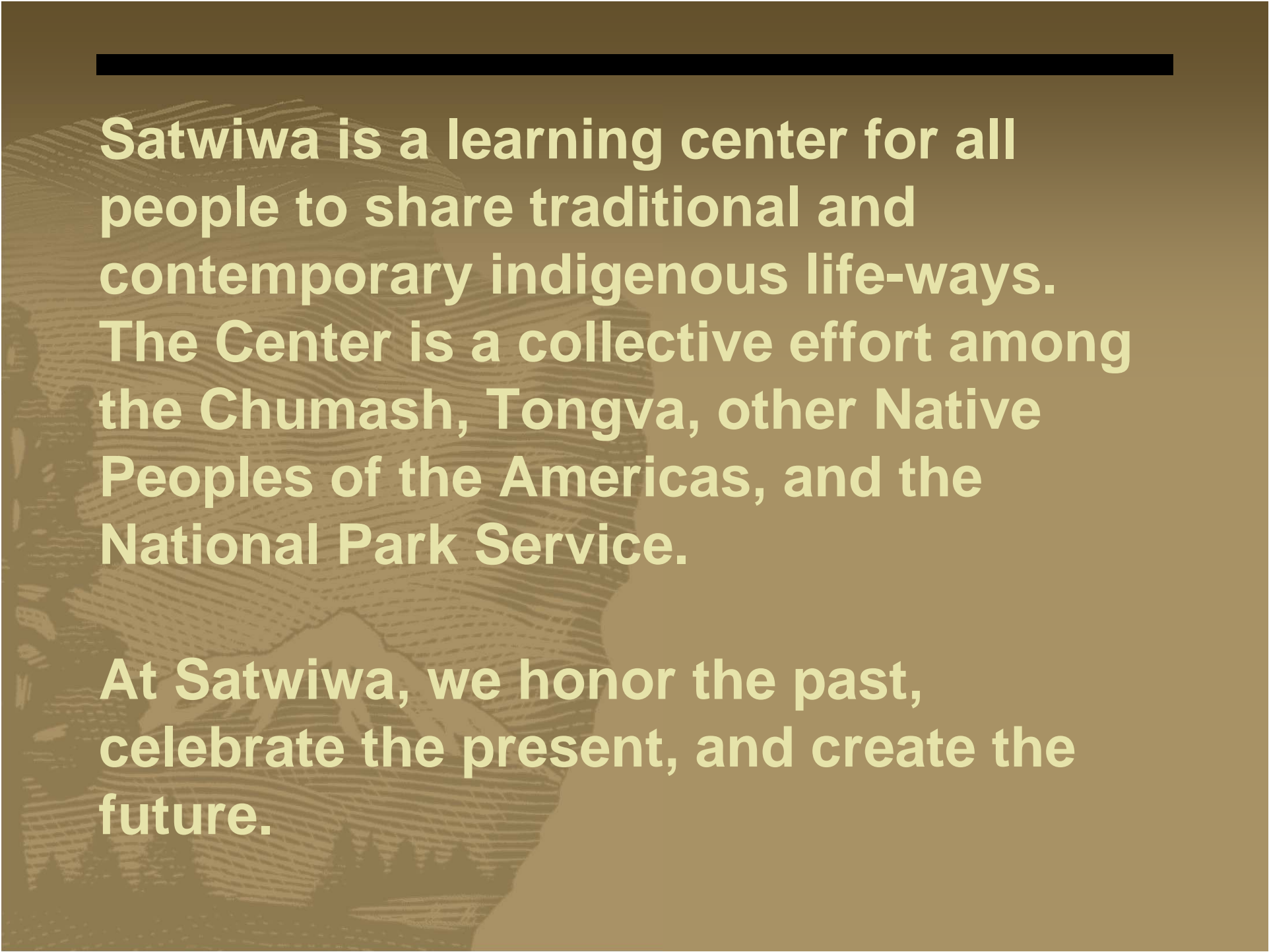
Key Questions (Agency)

- Why do outreach?
- Is it worth it?
- What can I expect?
- Are we alone?
- Why partner?



SATWIWA NATIVE AMERICAN INDIAN CULTURE CENTER





Satwiwa is a learning center for all people to share traditional and contemporary indigenous life-ways. The Center is a collective effort among the Chumash, Tongva, other Native Peoples of the Americas, and the National Park Service.

At Satwiwa, we honor the past, celebrate the present, and create the future.

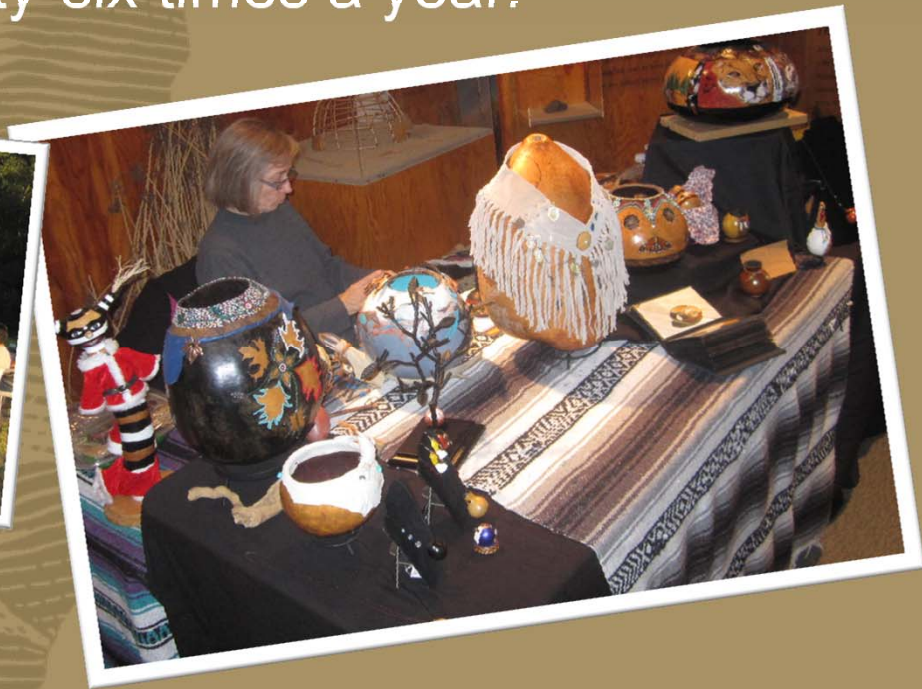
Public Programs at Satwiwa

- Exhibitions
- Guest Host Program
- Winter Solstice Art Show & Sale



Guest Host Program

- First hand experiences lead by Native American presenters.
- Programs held twenty-six times a year.



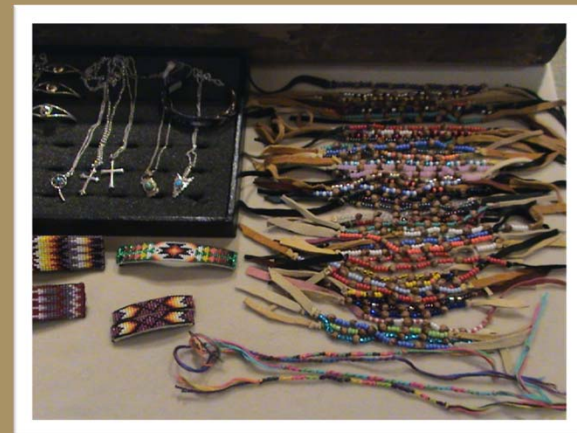
Second generation relevancy



Annual Winter Solstice Guest Host Art Show and Sale



Public audiences directly connect with the artists.



SHRUBS

Students Helping Restore Unique Biomes



SHRUBs

- Curriculum-Based, Service Learning
- Fifth Grade
- Partnership school and park
- Teacher, student and ranger led
- Replicable



Students

- Work side-by-side with park rangers, restoration staff, and volunteers collecting seeds.
- Work in the park's plant nursery.
- Plant and care for native plants at a quarter acre restoration site.



Ranger Talks & Art Lessons

- The National Park Service
- Native flora and fauna
- Geology
- Impacts of invasive species
- Scientific method
- Public speaking





Academia Del Pueblo
Community based Outreach



Getting kids outside and active!

Relationship Building & Consistency



The work of partnership

- Know your organization's goals.
- Get out and meet people!
- Dialogue and identify common bonds.
- Be honest.
- It's okay to make mistakes!
- Share responsibility (and what you've learned).
- Stay connected. You're in it for the long haul!
- Celebrate success together. Shoulder tough times.

Santa Monica Mountains National Recreation Area

www.nps.gov/samo



National Park Service
U.S. Department of the Interior