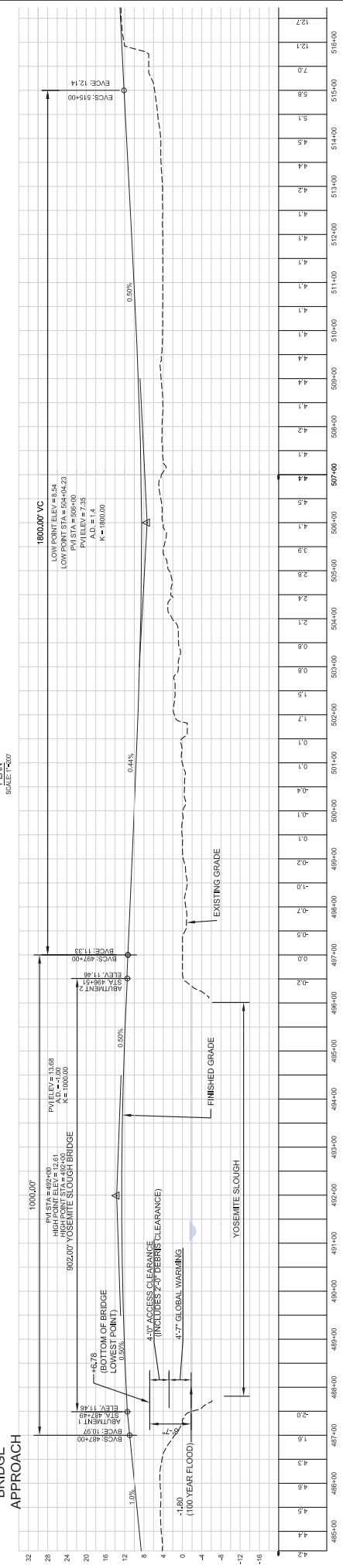
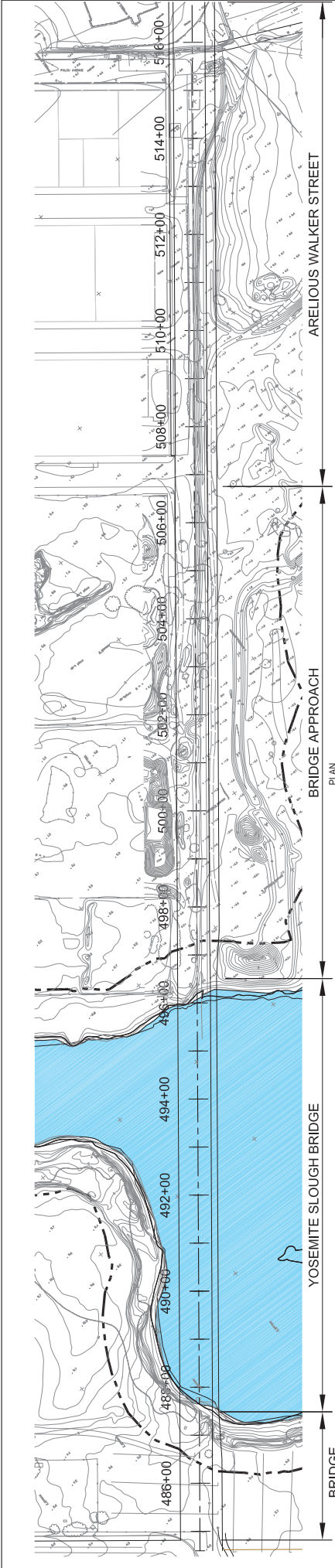


Appendix N2

**MACTEC, Yosemite Slough
Bridge Drawings—Stadium
and Non-Stadium Options**



BRIDGE APPROACH TYPICAL SECTION
87 FEET

YOSEMITE SLOUGH BRIDGE TYPICAL SECTION
81 FEET

ARELIIOUS WALKER STREET TYPICAL SECTION
95 FEET



REFERENCE: YOSEMITE SLOUGH ROAD PLAN, PROFILE AND SECTIONS, FIG. P-101P, 1, DATED 09/17/08, WINZLER AND KELLY

PRELIMINARY DRAFT

HUNTERS POINT / CANDLESTICK POINT
SAN FRANCISCO, CALIFORNIA

YOSEMITE SLOUGH BRIDGE
APPROACH AND ARELIIOUS WALKER STREETS
PLAN, PROFILE & SECTIONS

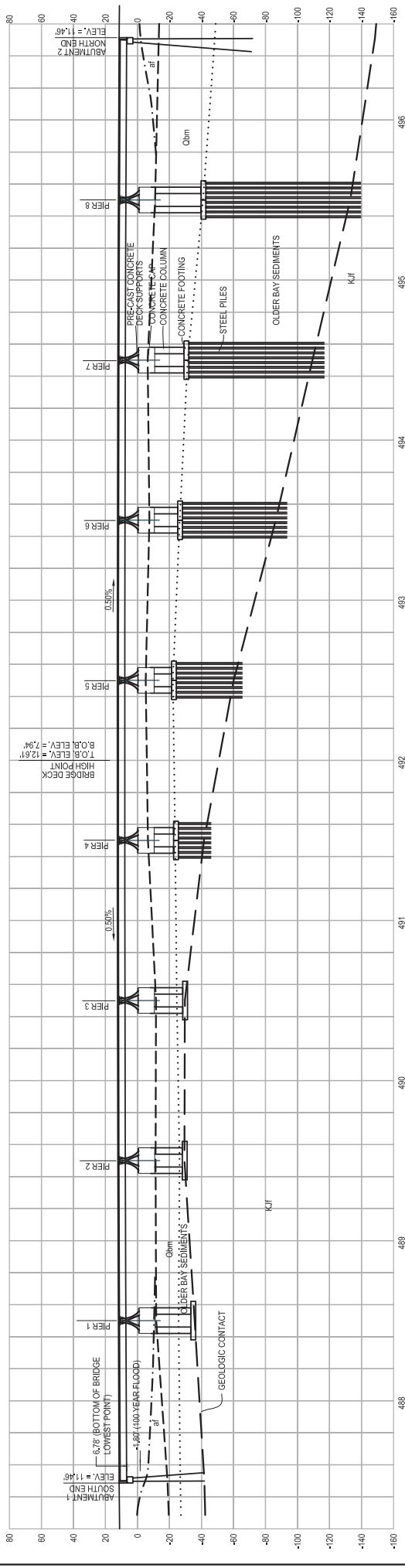
DATE: 10/27/09
DRAWN: JFD
PROJECT NO: 09090772
CHECKED: AS SHOWN
REVISIONS: 1

NO. DATE

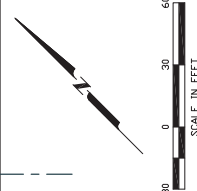
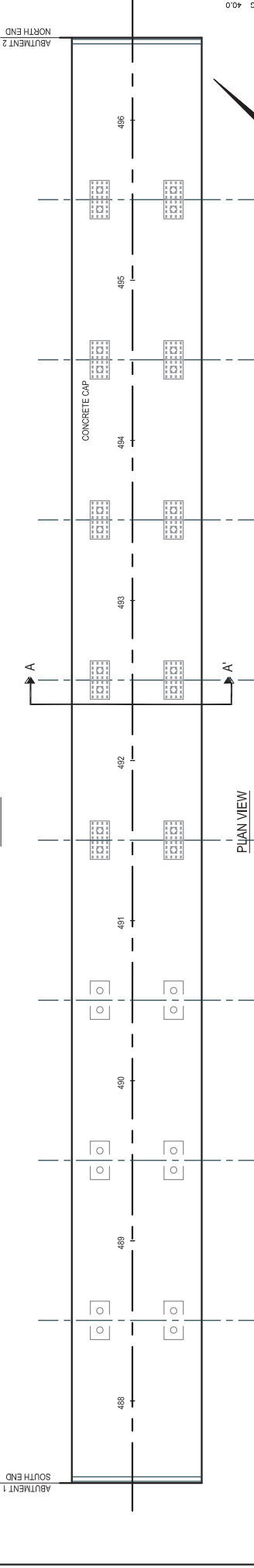
1 OF 7

LEGEND

- NOTE: VERTICAL DATUM IS CCSF.
- ARTIFICIAL FILL CONSISTING OF CLAY, SILT AND SAND WITH CONSTRUCTION DEBRIS SUCH AS CONCRETE AND WOOD DEBRIS
- BAY MUD DEPOSIT CONSISTING OF HIGHLY COMPRESSIBLE SOFT CLAY AND SILT SUSCEPTIBLE TO CONSOLIDATION SETTLEMENT
- OLDER BAY SEDIMENTS
- FRANCISCAN COMPLEX ROCK
- STATIONING BASED ON WINZLER AND KELLY FIGURE NUMBER P-11P DATED 09-17-2008



PROFILE



PRELIMINARY DRAFT



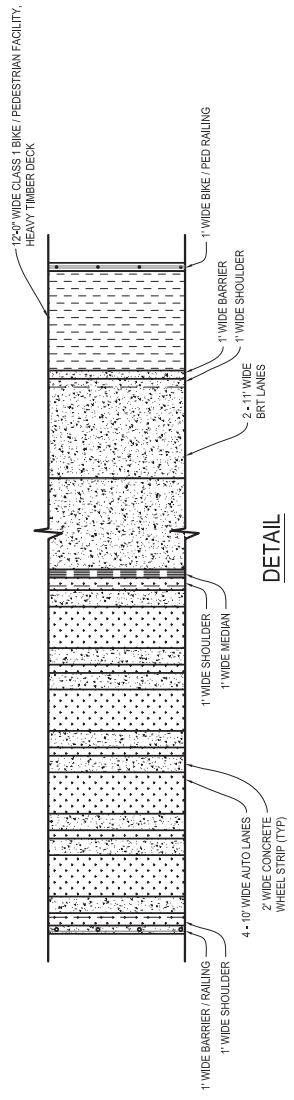
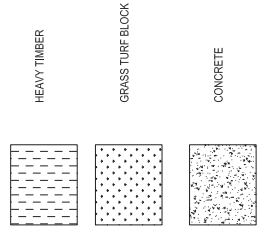
HUNTERS POINT / CANDLESTICK POINT
SAN FRANCISCO, CALIFORNIA

YOSEMITE SLOUGH BRIDGE
PLAN AND PROFILE

DATE: 10/27/09
DRAWN: JFD
CHECKED: AS SHOWN
PROJECT: HUNTERS POINT
SCALE: AS SHOWN
SHEET: 2 OF 7

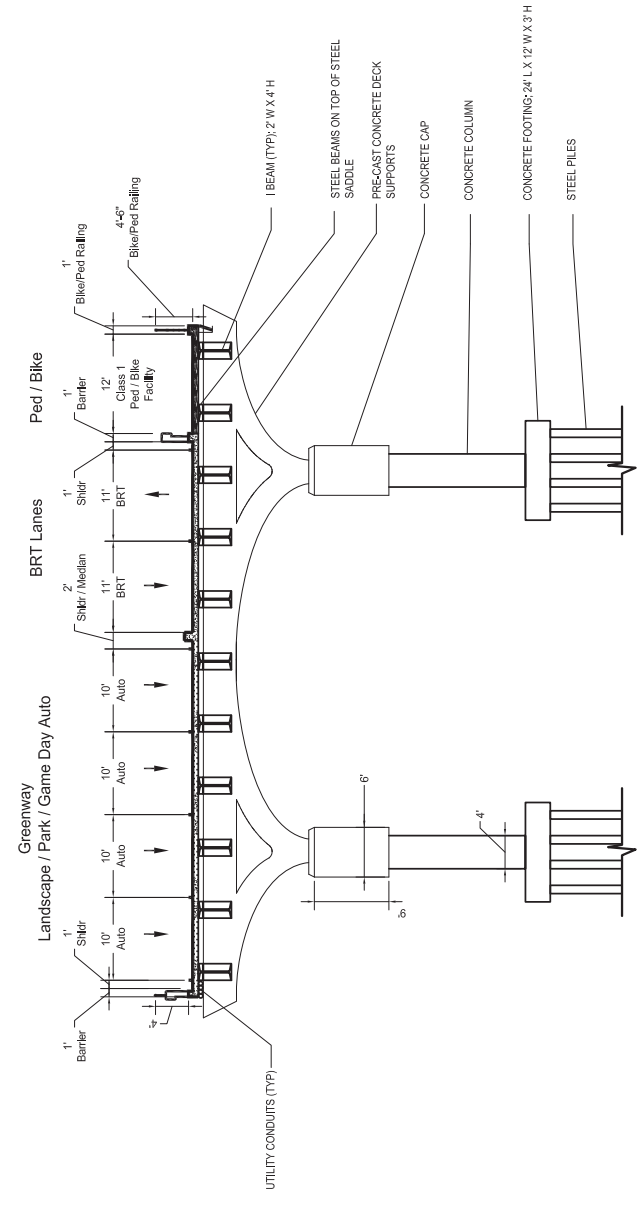
NO.	DATE	REVISIONS
3	10-19-2009	ADJUST FOR CHANGE IN 100 YEAR FLOOD ELEVATION TO -1.6%.
2	10-6-2009	ADJUST FOR ALLOWING DEBRIS AND ACCESS CLEARANCE. CHANGE 100 YEAR FLOOD ELEVATION TO -1.7%.

LEGEND

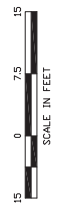


**YOSEMITE SLOUGH BRIDGE
81 FEET**

DETAIL



SECTION A-A'



20090925-YSA-M.L.C.-10-2-3.DWG 40.0
20090617.1056
3 OF 7

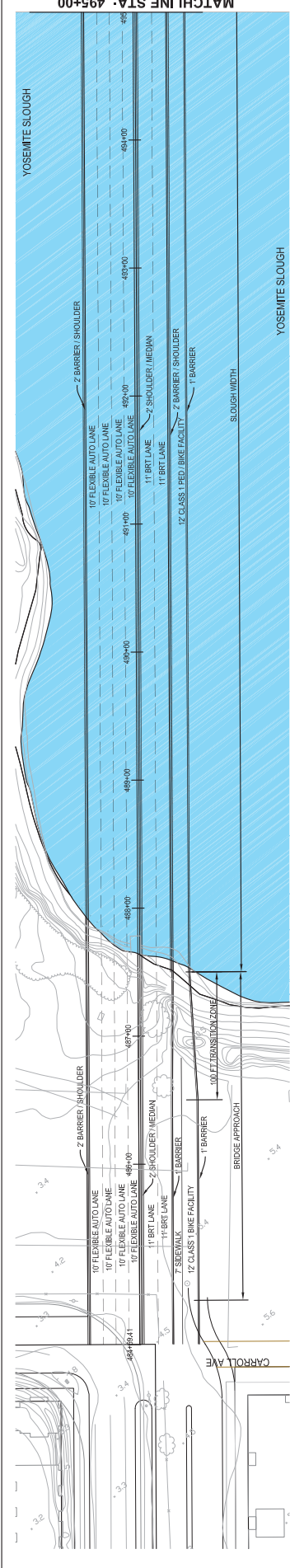
YOSEMITE SLOUGH BRIDGE
SECTION AND DETAIL

HUNTERS POINT / CANDLESTICK POINT
SAN FRANCISCO, CALIFORNIA

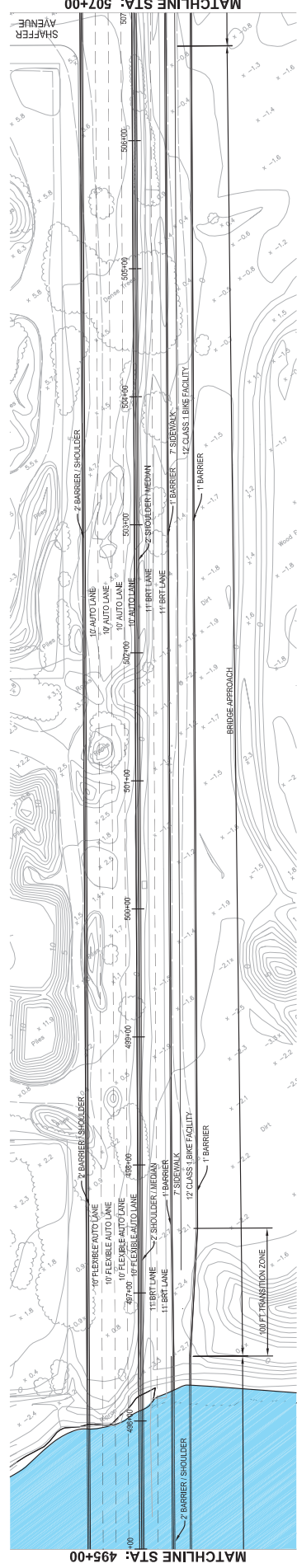
PRELIMINARY DRAFT
MACTEC

DESIGNER	JFD	PROJECT NO.	080820772
TRACER	AS SHOWN	SCALE	AS SHOWN
CHECKER		APPROVER	
DATE	10/27/09	DATE	

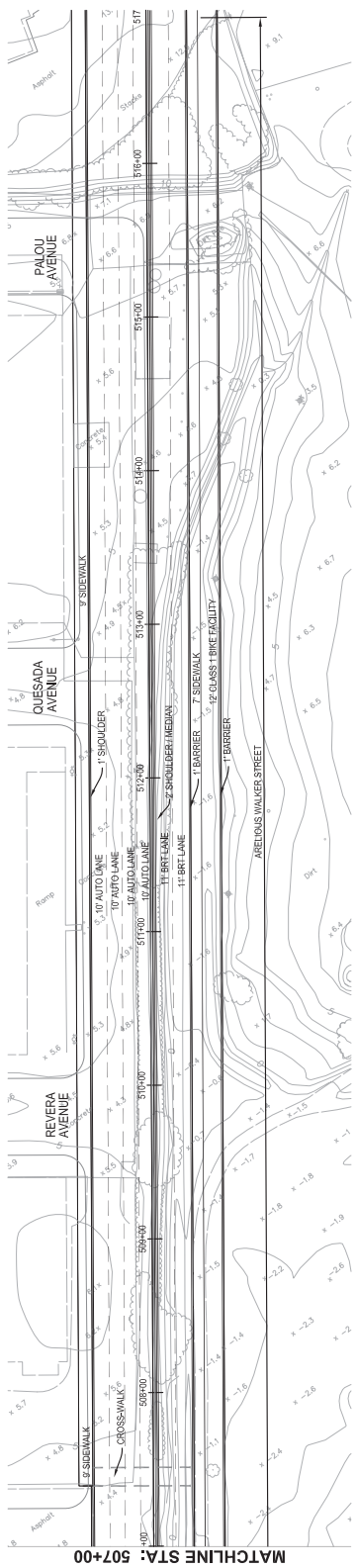
NO.	DATE	REVISIONS



PLAN VIEW



PLAN VIEW



PLAN VIEW

PRELIMINARY DRAFT



HUNTERS POINT / CANDLESTICK POINT
SAN FRANCISCO, CALIFORNIA

YOSEMITE SLOUGH BRIDGE
APPROACH & ABELIOUS WALKER
STREET PLAN VIEW

DATE: 10/27/20
DRAWN: AS SHOWN
CHECKED: [blank]
DATE: [blank]

NO. DATE

REVISIONS

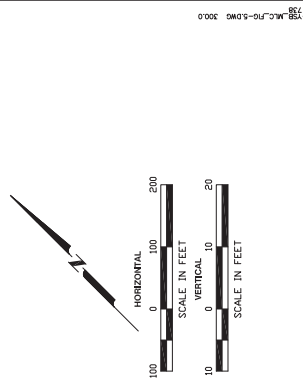
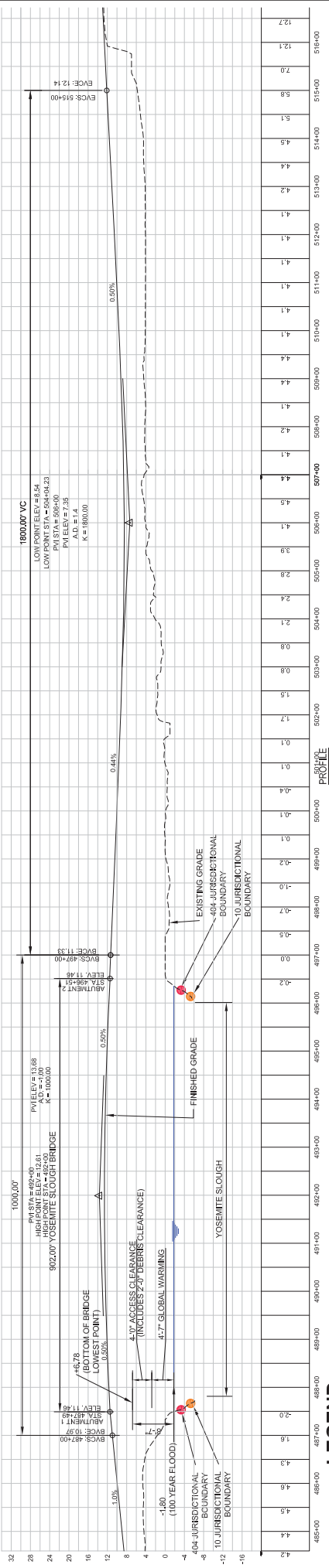
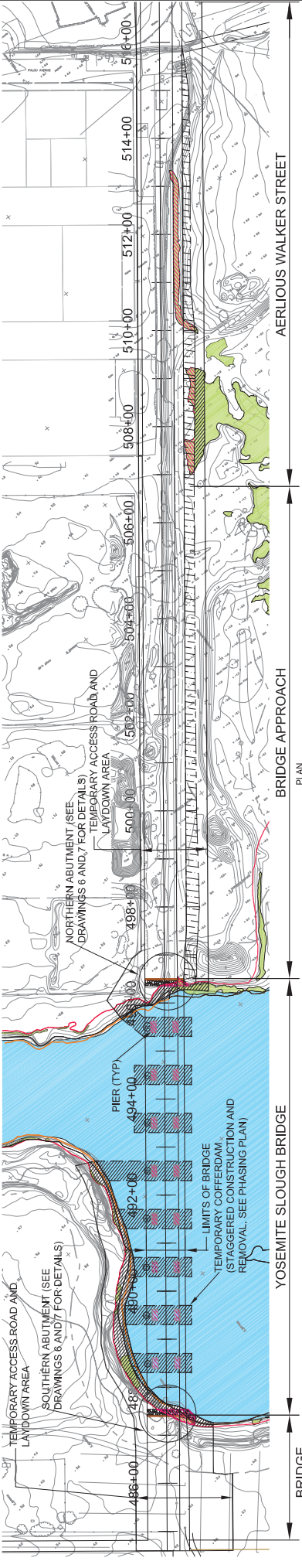
SCALE IN FEET
0 40 80

SHEETS: 4 OF 7

DRAWING: 4

20091027-YSMT BRDG-MLC.FIG-4.DWG 300.0





Cofferdam Construction Phasing Plan	
Phase	Cofferdam Removed
A	
B	①
C	②
D	③
E	④
F	⑤
G	⑥
H	⑦
I	⑧

- PERMANENT IMPACT - JURISDICTIONAL WATERS OR WETLAND HABITAT AREAS
- TEMPORARY IMPACT - JURISDICTIONAL WATERS OR WETLAND HABITAT AREAS
- JURISDICTIONAL WETLANDS
- APPROACH AND ARELIIOUS WALKER STREET EMBANKMENT
- SECTION 10 JURISDICTIONAL BOUNDARY
- SECTION 404 JURISDICTIONAL BOUNDARY (TIDAL)
- TEMPORARY ACCESS ROAD AND CONTRACTOR LAYDOWN AREA
- TEMPORARY COFFERDAMS AND NUMBER

LEGEND

[Symbol]	PERMANENT IMPACT - JURISDICTIONAL WATERS OR WETLAND HABITAT AREAS
[Symbol]	TEMPORARY IMPACT - JURISDICTIONAL WATERS OR WETLAND HABITAT AREAS
[Symbol]	JURISDICTIONAL WETLANDS
[Symbol]	APPROACH AND ARELIIOUS WALKER STREET EMBANKMENT
[Symbol]	SECTION 10 JURISDICTIONAL BOUNDARY
[Symbol]	SECTION 404 JURISDICTIONAL BOUNDARY (TIDAL)
[Symbol]	TEMPORARY ACCESS ROAD AND CONTRACTOR LAYDOWN AREA
[Symbol]	TEMPORARY COFFERDAMS AND NUMBER

REFERENCE: YOSEMITE SLOUGH ROAD PLAN, PROFILE AND SECTIONS, FIG. P-111P, DATED 09/17/06, WINZLER AND KELLY

PRELIMINARY DRAFT



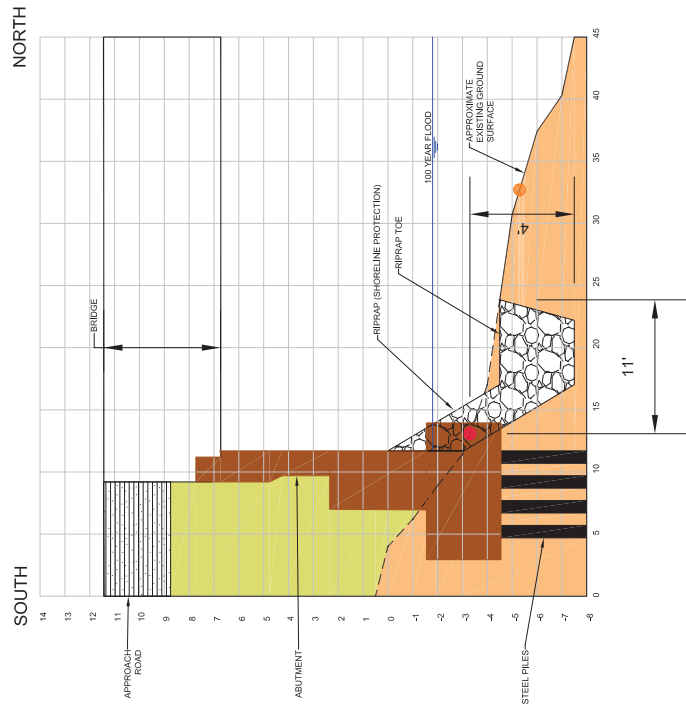
HUNTERS POINT / CANDLESTICK POINT
SAN FRANCISCO, CALIFORNIA

YOSEMITE SLOUGH BRIDGE
JURISDICTIONAL IMPACTS
PLAN AND PROFILE

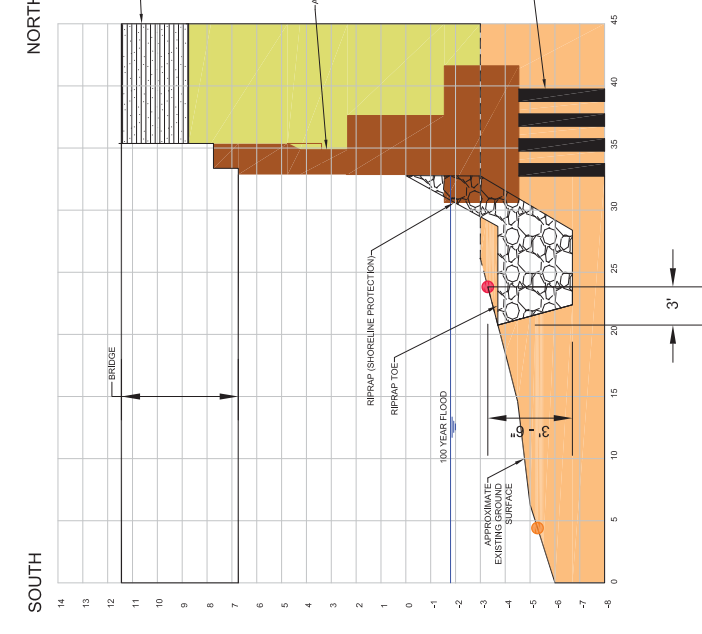
DRAWN BY: 5
SHEETS: 5 OF 7

NO.	DATE	REVISIONS
1	10-19-2009	ADJUST FOR CHANGE IN 100 YEAR FLOOD ELEVATION TO -1.26.
2	10-8-2009	ADJUST FOR ALLOWING DEBRIS AND ACCESS CLEARANCE. CHANGE 100 YEAR FLOOD ELEVATION TO -17.76.

DATE	10/27/09
DESIGNER	AS SHOWN
CHECKER	AS SHOWN
PROJECT NO.	06090772
DRAWN BY	JFD



SOUTHERN ABUTMENT
 HORIZONTAL SCALE 1" = 10'
 VERTICAL SCALE 1" = 5'



NORTHERN ABUTMENT
 HORIZONTAL SCALE 1" = 10'
 VERTICAL SCALE 1" = 5'

- LEGEND**
- RIP-RAP
 - EXISTING FILL
 - NEW FILL
 - ABUTMENT
 - STEEL PILES
 - APPROXIMATE EXISTING GROUND SURFACE
 - 100-YEAR FLOOD
 - RIPRAP TOE
 - RIPRAP (SHORELINE PROTECTION)
 - BRIDGE
 - APPROACH ROAD

SECTION 10 JURISDICTIONAL BOUNDARY
 SECTION 404 JURISDICTIONAL BOUNDARY (TIDAL)



HUNTERS POINT / CANDLESTICK POINT
 SAN FRANCISCO, CALIFORNIA

YOSEMITE SLOUGH BRIDGE
 JURISDICTIONAL IMPACTS AND
 ABUTMENT SECTION VIEW

DATE: 10/27/09
 DRAWN BY: JFD
 PROJECT NO: 060620772
 SCALE: AS SHOWN
 CHECKED BY: AS SHOWN
 DATE: 10/27/09

NO. DATE REVISIONS

3 10-18-2009 ADJUST FOR CHANGE 100 YEAR FLOOD ELEVATION TO -1.80.
 2 10-8-2009 ADJUST FOR ALLOWING DEBRIS AND ACCESS CLEARANCE.
 CHANGE 100-YEAR FLOOD ELEVATION TO -17.75.

REFERENCE: YOSEMITE SLOUGH ROAD FLOOD PROFILES AND SECTIONS,
 PG. 1-114, DATED 08/17/05, VINELER AND KELLY

PRELIMINARY DRAFT

DRAWN BY: JFD
 SHEETS: 7
 OF: 7