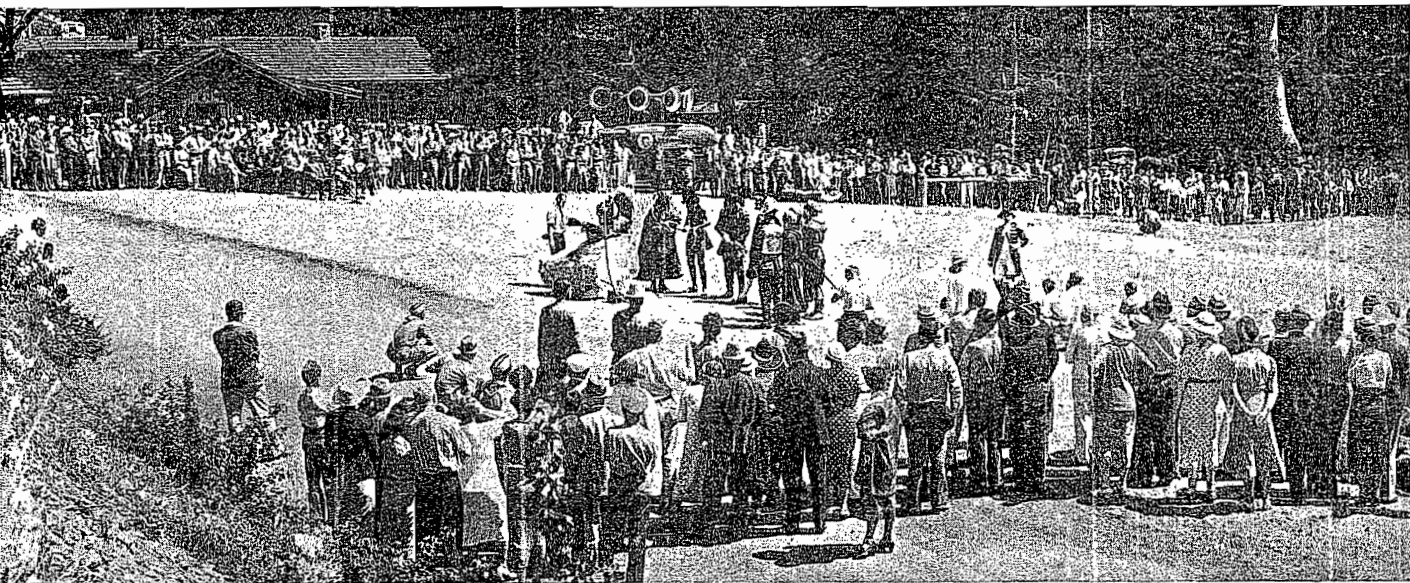


THE DIVISION OF PARKS

For the People, a New Road to the Redwoods, a New Mountain Park



COURTESY CALIFORNIA HIGHWAYS

Eras of the past were portrayed by costumed characters at the Pfeiffer Redwood State Park ceremonies.

State Will Make Bid For Famous Landmark

California will have an opportunity to buy the Old Monterey Custom House, famed historical landmark which the State Division of Parks has administered for many years, it was announced this month.

Under lease by the State from the Federal Government, the landmark, where first was raised the United States flag to claim California for the Union, recently was appraised by the Treasury Department for sale.

With a legislative appropriation necessary to acquire it, Joseph R. Knowland, chairman of the State Park Commission, asked Washington authorities to defer sale of the landmark until such time as the State was in a position to bid for it.

Announcement that the Government had granted the park official's request was made at the recent meeting of the Park Commission in Santa Maria.

COMMISSION MEETS JULY 30

The next meeting of the State Park Commission will be held at the Mt. Diablo State Park, July 30.

Farthest south of California's majestic redwood groves, Pfeiffer Redwood State Park, Monterey County, increased its lure to thousands of summer vacationists this month with the formal opening of the 8-million-dollar section of the Roosevelt Highway that links San Simeon with Carmel.

In a scene of pageantry and regalement, Governor Frank F. Merriam, on June 27, lighted the fuse that blasted the last boulder from the path of the new highway and dedicated the towering redwoods through which it passes to the "everlasting enjoyment of the people of California" and others who may come to view their splendor.

Joining the State's chief executive were members of the State Park Commission, the State Highway Commission, and thousands of folk of surrounding coastal and valley communities and their civic leaders.

Eight days before, on June 19, crowds of men, women and children from a half-dozen Southern California counties saw Chairman Joseph R. Knowland of the State Park Commission unveil the monument that added San Jacinto Mountain State Park, Riverside County, to California's famed State Park System.

On this day nearly 12 thousand acres of Mt. San Jacinto's primeval stretches were added as a unit to the chain of State-administered moun-

Projects Continued

Continuance of Civilian Conservation Corps projects in California's State Park System has been assured by congressional enactment of a law extending these activities another three years.

Further needed development of park facilities is seen by the extension as it will allow the continuance, under the supervision of the State Division of Parks, of works projects of CCC units assigned to the National Park Service, many of which were under way when the extension was granted.

tain, forest, lake and beach parks, which offers the greatest variety of public-owned, natural recreational areas to be found in any State in the Union.

San Jacinto Mountain State Park is distinctive because it is set aside forever as a primeval area.

From Idyllwild, cone-carpeted village on the Pines-to-Palms Highway, the park's rugged slopes and canyons extend to the peak of snow-clad Mt. San Jacinto, 10,805 feet above sea level, forming an area penetrable only by saddle and foot.

Refreshing to conservationists was the Park Commission's pledge to never allow the construction of roads into its remote sections.