

SOME DRAFT GP PROPOSALS



Park Headquarters Building



Maintenance Bone-yard, Stonewall Mine



Former Cal Fire Station

Operations

- Maintain Sector Office and main maintenance facilities at Paso Picacho. Consider satellite office and maintenance facilities at Dyar House, Green Valley, and/or Merigan.

Relocate sector office and visitor center to Dyar Ruin site

- Relocate maintenance bone-yard at Stonewall Mine area to Paso Picacho, Green Valley, and/or Merigan as well as the mounted assistance unit camp and trailer. These are modern, intrusive uses that do not fit with the historic character within the cultural preserve and historic zone.

Where? We struggled with this for yrs. Does this increase operational costs? If so, leave the industrial yard to be used. MAU camps are vital to the park. Need to remain

- Refurbish former Mack Ranch property so it can be used for Park Operations. Property is not suited for public use because of dangerous access onto SR 79 (poor sight lines and high speed vehicles).

The solution is to fix the access and let the public use it. It is no safer for employees than the public

- Acquire former radio repeater building atop Cuyamaca Peak for use as a cell tower to improve cell phone communications within the Park and bring the Department additional revenue.

Needed. Keep this revenue in the park for maintenance of trails

Natural Resources

- Promote the protection of biocorridors to facilitate the movement (disbursal, migration, etc.) of native plants and animals within the Park and the region to preserve natural ecosystem dynamics and allow for natural response to stressors such as climate change.
- Actively manage the Park to reduce the introduction and spread of non-native plant and wildlife species.



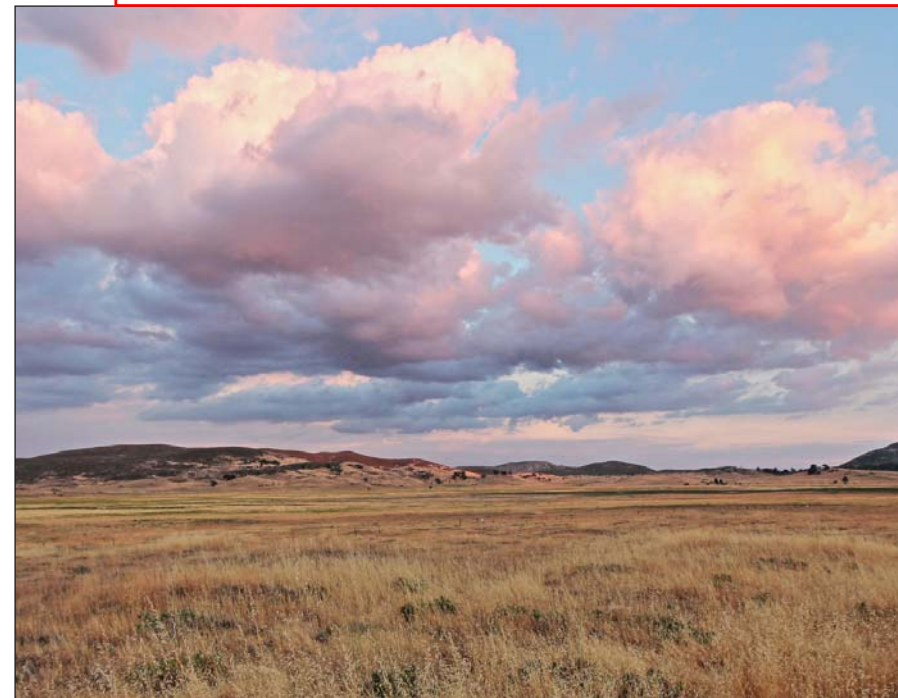
Native American Mortars



Stonewall Peak

Cultural Preserves **Yes!!!**

- Increase the size of the Ah-Ha-Kwe-Ah-Mac/Stonewall Mine Cultural Preserve to incorporate all areas between Stonewall Creek Fire Road (eastern boundary), State Route 79, an area south of the lookout fire Road, and old Spring Trail (southern boundary) – to protect cultural sites. **I agree**
2nd motion
This is way too much to exclude from future access or recreation
- Increase size of Cuish Cuish (East Mesa) cultural preserve to incorporate highly significant and concentrated Native American sites. **Yes!!!**
Way too hard to maintain trails: ease up - this designation does not provide protection from pot hunters, Alt A taking away too much!
Get rid of Dyar ruins - not historic



Lake Cuyamaca Meadows



Lookout Fire Road



Cuyamaca Cypress

Natural Preserves

- Increase size of Cuyamaca Meadow Natural Preserve to incorporate additional meadow areas by Cuyamaca Lake with critical stands of the state-listed endangered Meadow Foam and Cuyamaca Lake Downingia. **Good**
Control vehicle use with road curbs and there is no need to expand the preserves. Agreed.
- Designate a new 175-acre natural preserve to protect the Cuyamaca Cypress (Federal Species of Concern, CNPS List 1B, and only known to occur within CRSP and adjacent Cleveland National Forest) **Good**

SOME DRAFT GP PROPOSALS [CONT.]



Picnic Area at Stonewall Mine

Campgrounds and Visitor Use Facilities

- Rebuild Dyar House and use as a visitor center and/or, park and volunteer administrative offices. **Keep other options open** **Historical designs very flammable. consider building with fire-resistant material**
Great idea to utilize the Dyar House stones
- Rebuild the former Camp Hual-Cu-Cuish for use as a conference/retreat center, mountain or fire research facility (with dorms), or other structured public use. Continue use as equestrian staging area. **Why not do a horse camping area.**
if the area is being rebuilt - then a horse camp too **if it can be changed to overnight use then it can be equest.**
- Designate a new equestrian staging area at existing turn-out next to highway 79 near Lake Cuyamaca dam. **This is a decrease in # of rigs that can park vs. Hual-Cu-Cuish**
Keep # of rigs allowed the same **Proposed 4 trailers not enough!**
- Improve Green Valley Equestrian Campground (sites not level, difficult for larger rigs, more water hookups, add shade ramadas)
Fee differentiated for larger rigs **Do not take away sites, most sites not level for any rigs**
- Continue to work with stakeholders to look for a suitable location for an equestrian campground in the north part of the Park. Consider the former Tulloch Ranch parcel in ABDSP and off-site areas as possibilities. **Tulloch is in ABDSP - too far north**
Tulloch Ranch is not an alternative for Los Caballos
- Prior to any major capital outlay improvements to Green Valley or Paso Picacho Campgrounds, redesign the campgrounds to provide better visitor experiences and improve operations. Some potential issues to address are: **1) separating tent and RV areas to reduce noise impacts, 2) providing greater separation between close sites to increase privacy and reduce noise, 3) increasing the size of small sites, and 4) grading sites that are too steep for comfortable camping.**
Bike camps (primitive)
- Use the former Calfire station at Paso Picacho as a park administrative office with staff and/or volunteer to greet public, and possible visitor center.
- Replace undersized and old water holding tank at Green Valley (or augment with another one).
- Upgrade (increase) electrical power at Paso Picacho. Determine feasibility of SDG&E upgrade of main power supply as well as use of solar power.

This is not a private horse park - don't cater to it.



Stonewall
Trails

Redesign trails as multi-use. Widen or adapt as necessary



Do not restrict trail maintenance because of area reclassification - exempt trails

- Complete a Roads and Trails Management Plan. Some trails may be changed to multi-use (see below). In addition, trails need to be assessed for needed repairs, erosion, long-term maintenance and potential closures or re-routes, connections to the regional trail system, and reduction of impacts to sensitive areas. Also examine potential trail user conflicts (although few were stated during public input process).
Use mechanical means to make multi-use trails safe **Use the trail machine bought for the park**
- Consider converting the West Side Trail between Arroyo Seco Fire Road to Japacha Fire Road to allow for multi-use (mountain bikers desire connection from south end to north). **Agreed Yes!**
- Consider converting to multi-use, the Cold Stream Trail from West Mesa Fire Road to Paso Picacho (additional north/south connection). **Please!**
Lucky 5 along highway toward Mt. Laguna multi-use connector to Kelly's Ditch Trail.
- Establish a trail connection with ABDSP and other regional trails. Recognize and interpret prehistoric and historic trail routes (Native American and Fages).
Re-establish CRHT as a long distance multi-use route
- Add creek and river crossings (preferably bridges) at strategic locations.
- Add a short, accessible, interpretive loop trail near the existing visitor center.
Establish paved bike lanes along the Hwy 79 corridor **Yes! It will help local economy**

Special Events

- The Mounting Biking Assistance Unit and Mounted Assistance Unit already hold a yearly benefit ride for the Park. Consider other special recreation events, such as half-marathons and walks for charity or cause that could increase public exposure and support of the Park.
Be selective, careful - don't commercialize the park.



Snow Play

SOME DRAFT GP PROPOSALS [CONT.]



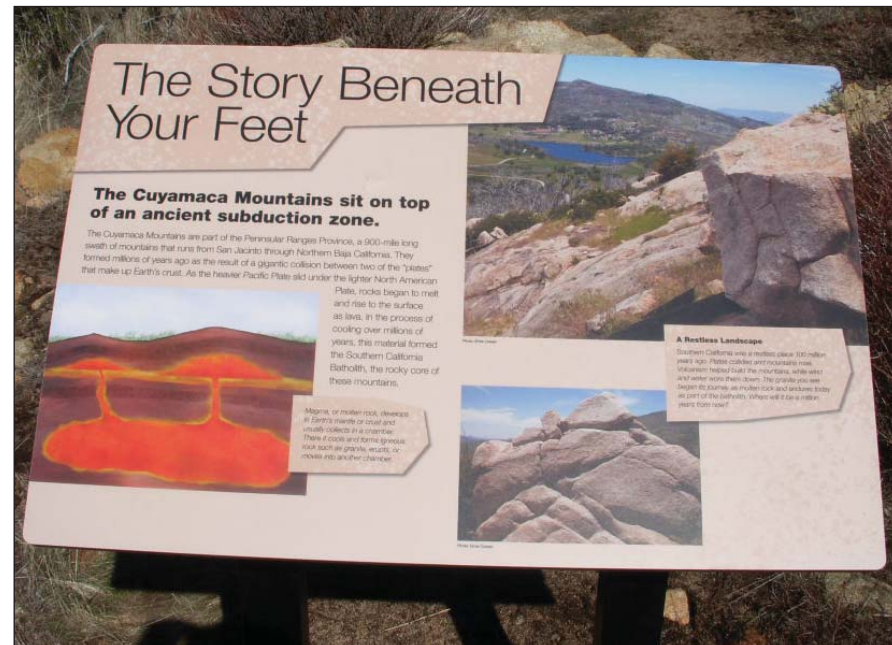
Mine Cage at Stonewall Mine



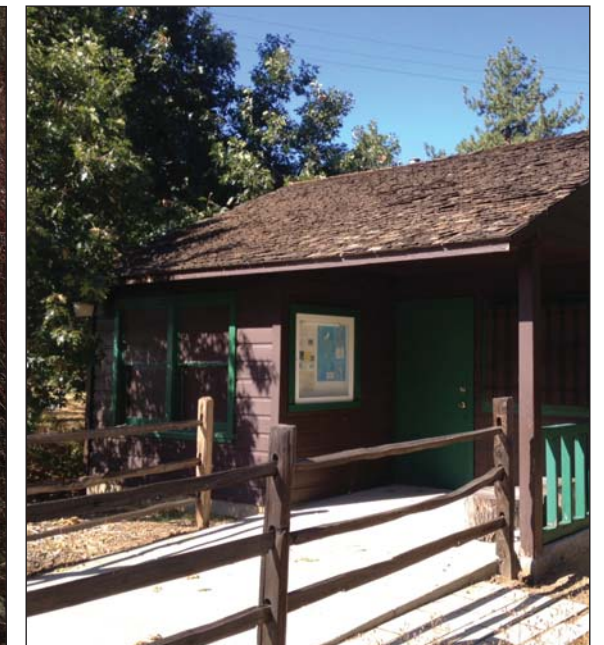
State Route 79 Road Sign



Overlooking Cuyamaca Lake



Interpretive Panel on Stonewall Peak Trail



Historic Campground Store

New Management Zones

- Establish a management zone within the Ah-Ha-Kwe-Ah-Mac/Stonewall Mine Cultural Preserve that allows for reconstruction and adaptive reuse of some historic buildings of Stonewall Mine/Cuyamaca City (possibly cabins for overnight use) as well as greater interpretation of historic resources. **This is so laughable**
- Consider the State Route 79 corridor, including its 8 day-use parking lots and adjacent snow play areas, as a "Gateway" zone (which provides parking, and emphasizes trail access, scenic vistas, orientation to the Park, roving interpretation, and snow play).

The MAU will be a very important presence for that (Historic Zone at Stonewall Mine). We have no impact on the setting

Interpretation and Education

- Increase coordination efforts with Cuyamaca Outdoor School for improved youth education and involvement
- Place new emphasis on reaching out to youth, as well as under-served, minority, and non-traditional state park users. **Yes**
- Provide materials that promote the Park's programs in English and in Spanish (e.g., interpretive activities and volunteer opportunities) as part of the Cuyamaca Outdoor School (COS) program (include on COS website, provide copies for each student, etc.).
- Develop short interpretive loop trails (about ¼ to ½ mile total) near Cuyamaca Outdoor School and the Park Visitor Center.
- Explore the use of diverse media (radio, cell phone, bilingual wayside panels, etc.) that can be accessed by potential visitors as they drive along Highway 79. **Already in place: A.M. radio.**
- Use established DPR programs such as Children in Nature and tie to roving interpretation programs to reach target audiences.
- Include training for staff and volunteer to be outreach ambassadors and schedule outreach programs in the community.
- Coordinate outreach efforts with other parks such as Cleveland National Forest and Anza-Borrego Desert State Park® as well as other public and private institutions. **Yes**
- Cultivate relationships with programs across the border, the Mexican Consulate, and other organizations involved with providing outdoor and/or educational experiences for potential tourists/visitors to the Park. **You will need much better volunteer facilities to get this accomplished**
- Bike groups to educate the public in backcountry trail use/camping, including "Leave No Trace" program.
- Refurbish the former Campground Store into an interpretive facility that connects visitors with the significance of Paso Picacho Campground.