

CUYAMACA RANCHO
STATE PARK

GENERAL PLAN



Objectives for Tonight's Public Meeting:

- Review Status of General Plan Process;

Objectives for Tonight's Public Meeting:

- ⦿ Review Status of General Plan Process;
- ⦿ Explain Planning Hierarchy, General Planning Constraints and Influences

Objectives for Tonight's Public Meeting:

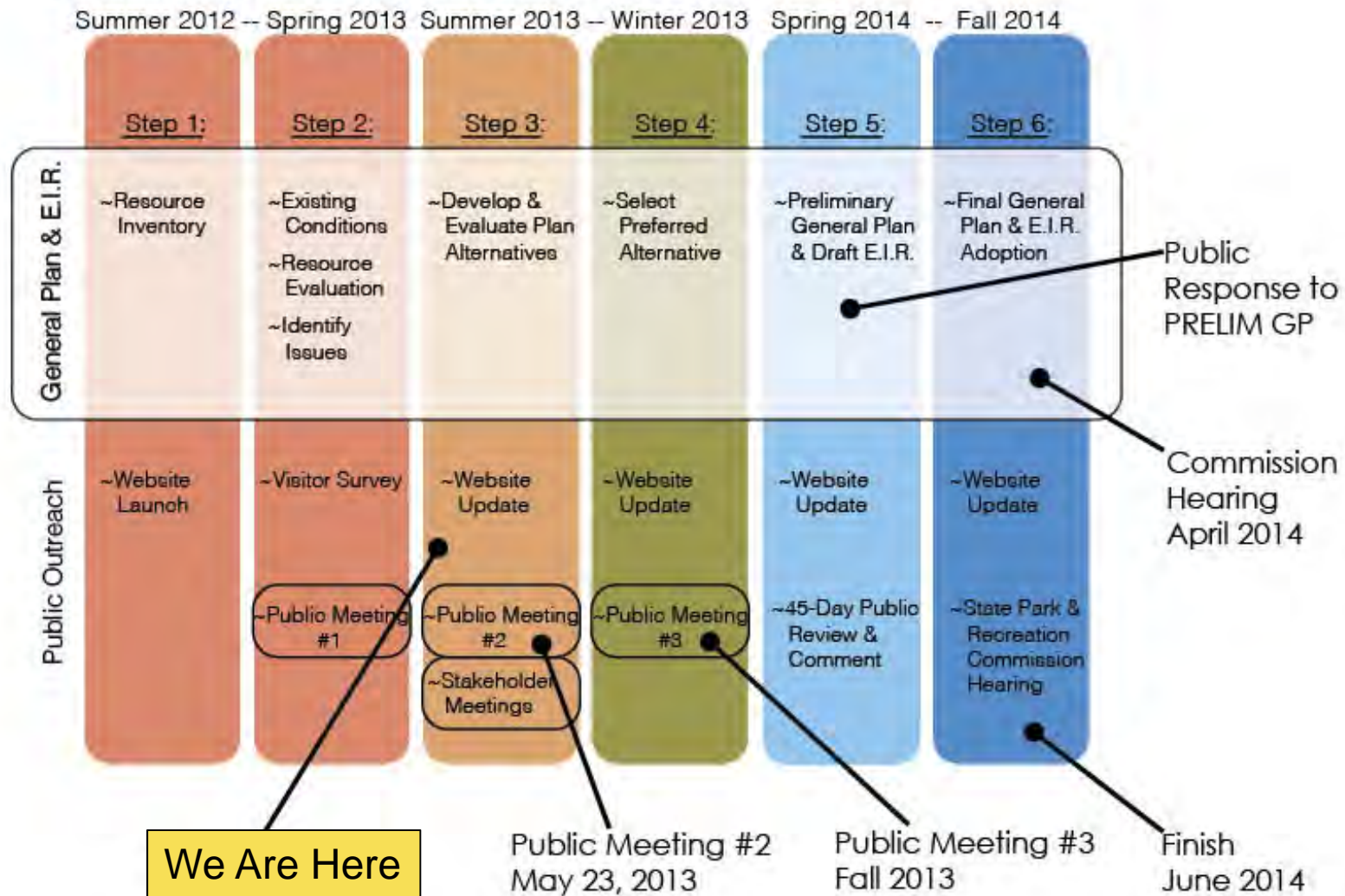
- ⦿ Review Status of General Plan Process;
- ⦿ Explain Planning Hierarchy, General Planning Constraints and Influences
- ⦿ Describe Management Zone Alternatives and some potential General Plan ideas;

Objectives for Tonight's Public Meeting:

- Review Status of General Plan Process;
- Explain Planning Hierarchy, General Planning Constraints and influences
- Describe Management Zone Alternatives and some potential General Plan ideas;
- Receive your comments regarding Alternatives and Draft ideas;
 - Written Comments
 - Verbal Comments
 - Comment Cards
 - Email Comments

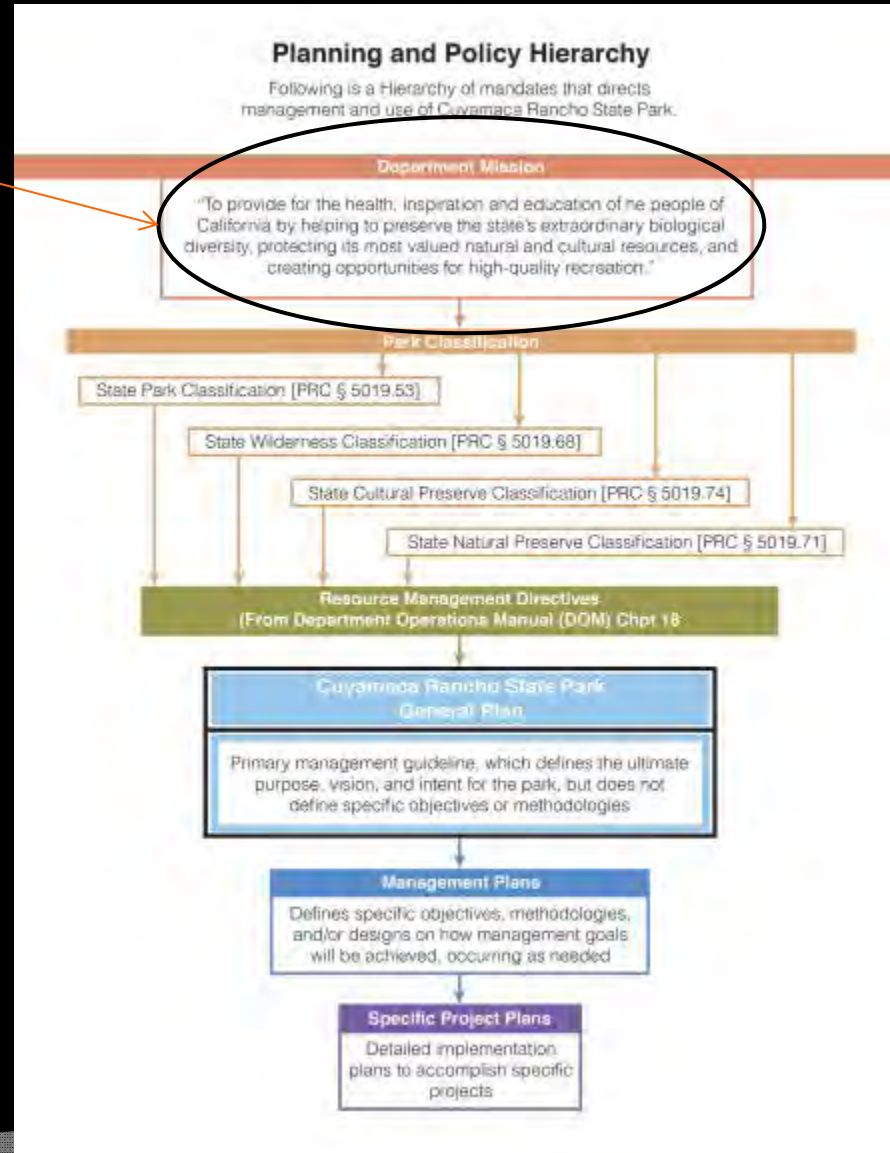
General Plan Timeline

GENERAL PLAN PROCESS & TIMELINE SUMMARY



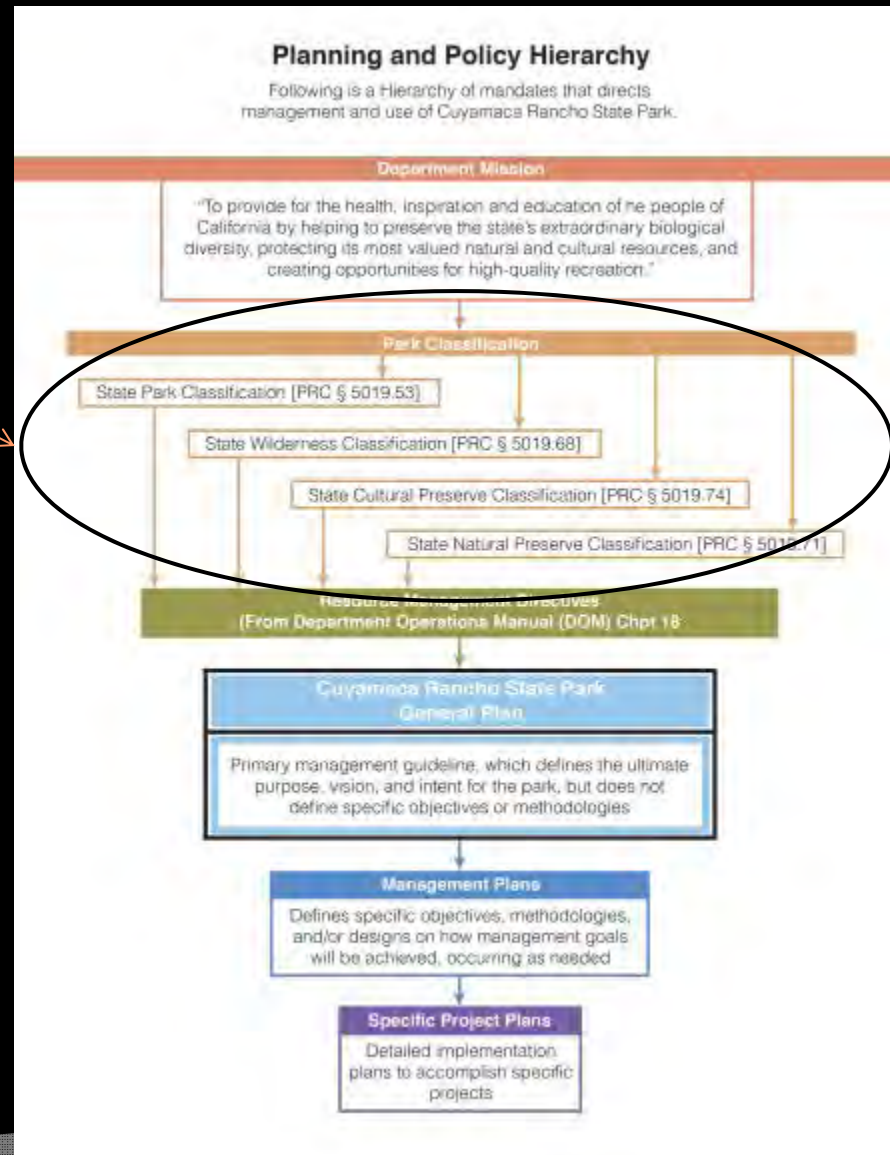
Planning and Policy Hierarchy

Department
Mission



Planning and Policy Hierarchy

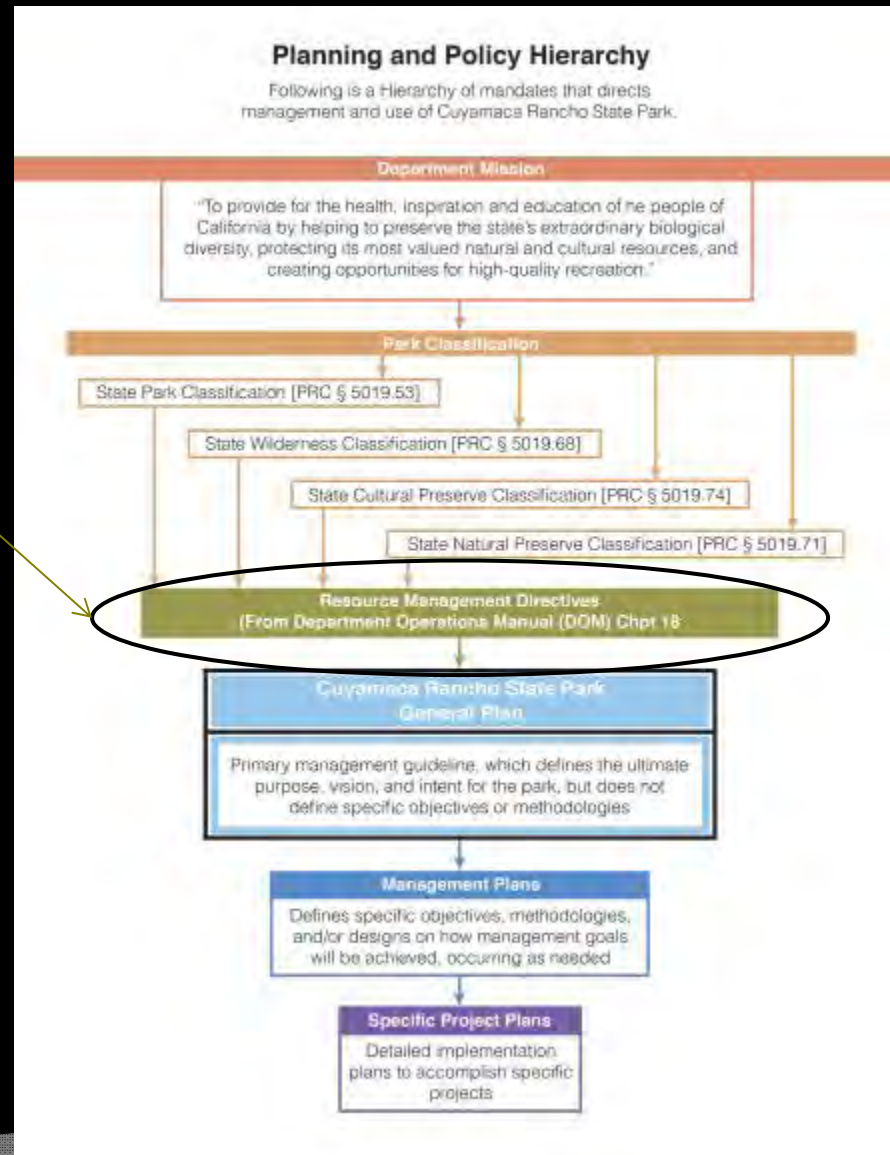
Park
Classification
And other PRC
mandates



Planning and Policy Hierarchy

Department Policies

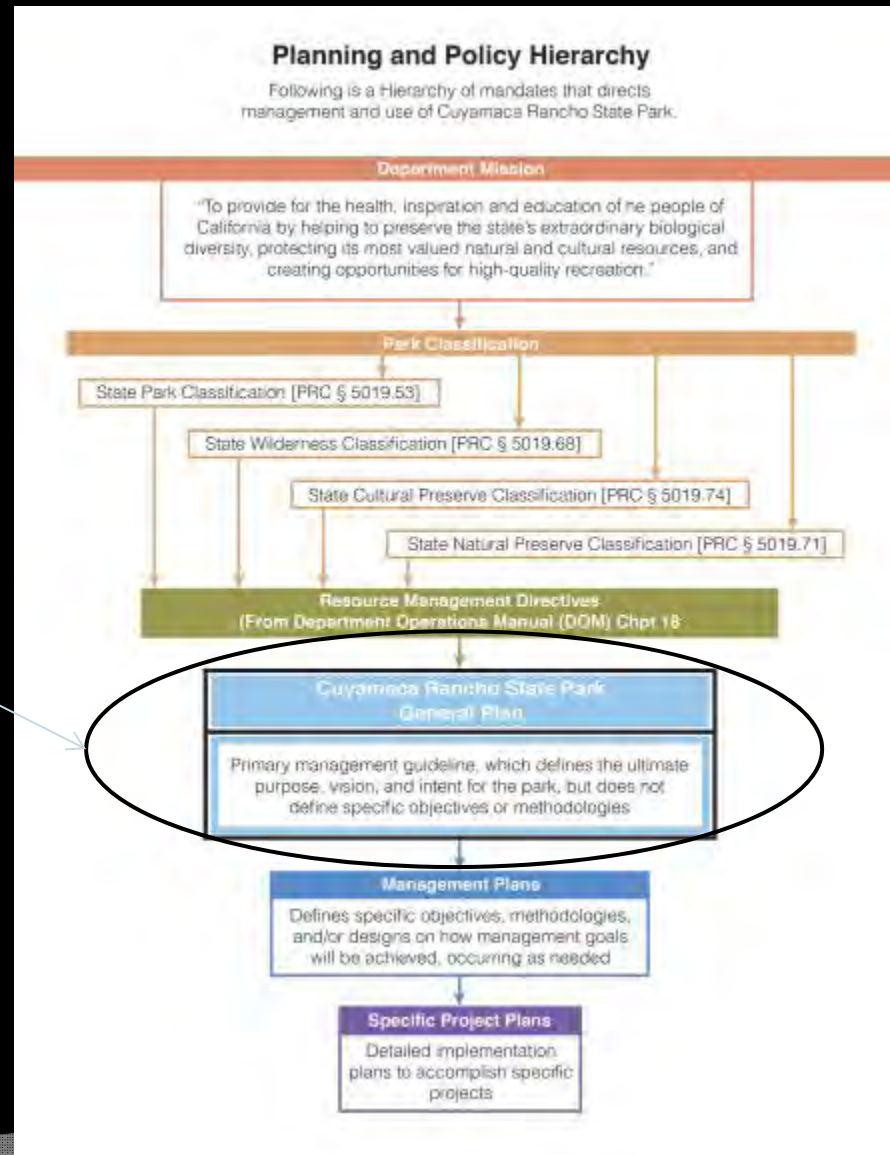
- (D.O.M. Department Operations Manual)
- Departmental Notices



Planning and Policy Hierarchy

General Plan

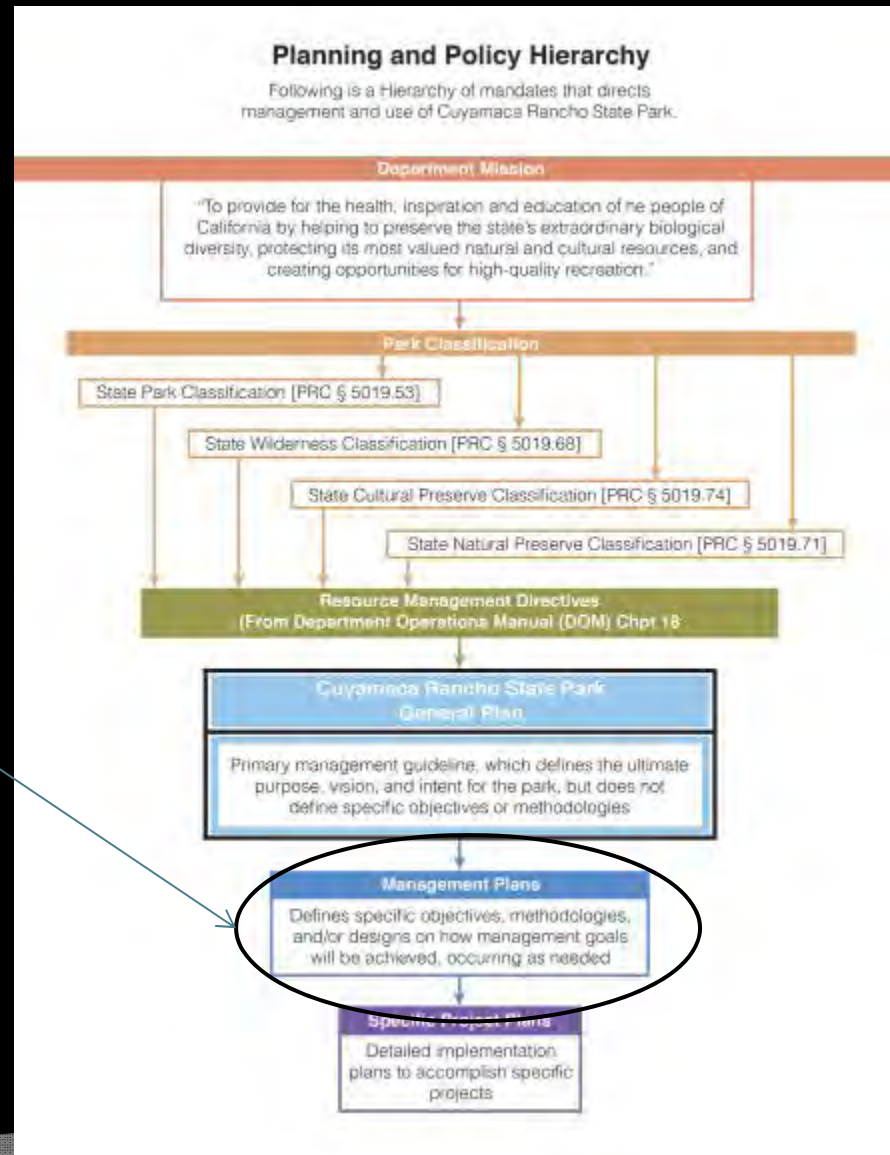
- Management Zones
- Goals and Guidelines



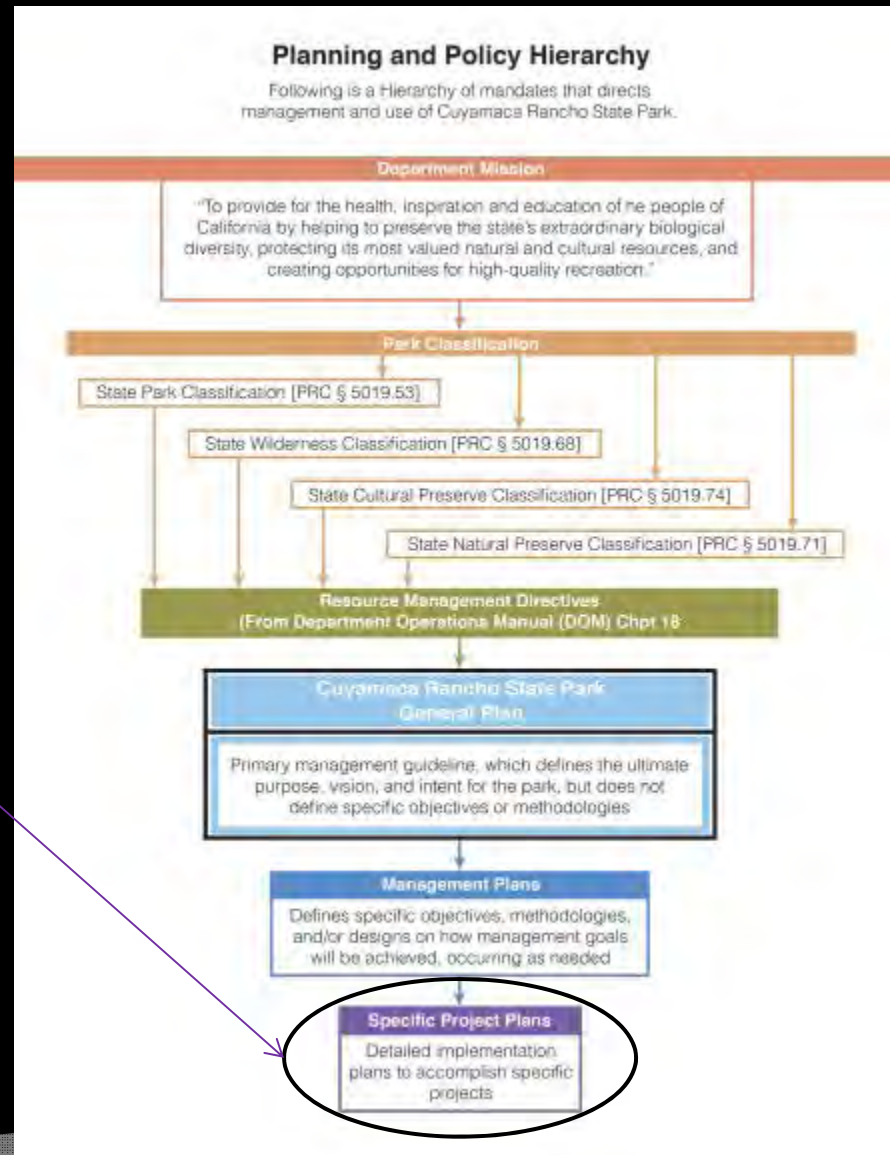
Planning and Policy Hierarchy

Management Plans

- E.G., Roads and Trails Management Plan



Planning and Policy Hierarchy



Specific Project Plans

© (e.g., Improve trail to Multi-Use)

General Plan Influences

Public Input

Department Staff
Input

Other Agencies and
Jurisdictions (e.g., Cal
Fire Coop Agreement, SD
County General Plan)

PRC and other
Laws (e.g., ADA)

General Plan Issues



Stockpile at Stonewall Mine



Mack Ranch

Park Facility Issues:

- ◎ Best location or use for:
 - Park HQ
 - Material stockpile @ Stonewall Mine
 - Permanent V.C.
 - Former Cal Fire Station
 - Mack Ranch

General Plan Issues

Public Facility Issues:

- Campsites need improvement
- Additional overnight accommodations needed
- Better orientation to Park
- Trails plan needed



Cabins at Paso Picacho



Info at Paso Picacho entrance kiosk

General Plan Issues

Archaeological Resource Issues:



Native American village site grinding slick

- Current Cultural Preserve boundaries don't encompass all sensitive resources
- Other sensitive resource areas of Park need additional protections
- Interpretation of cultural resources could be much greater

General Plan Issues

Historic Resource Issues:

- Best use for Dyar House and Hual-Cu-Cuish
- Stonewall Mine is greatly under-utilized and under-interpreted
- Historic resource interpretation is inadequate



Hual-Cu-Cuish former Dining Hall



Stonewall Mine – mine shaft area

General Plan Issues



Cuyamaca Lake Downingia (St. End.)



Cuyamaca Cypress (Fed. Sp. of Concern)

Natural Resource Issues:

- Natural Preserve boundary doesn't encompass all sensitive and rare habitats
- Cuyamaca Cypress protection needed

General Plan Issues



Family picnickers at Paso Picacho



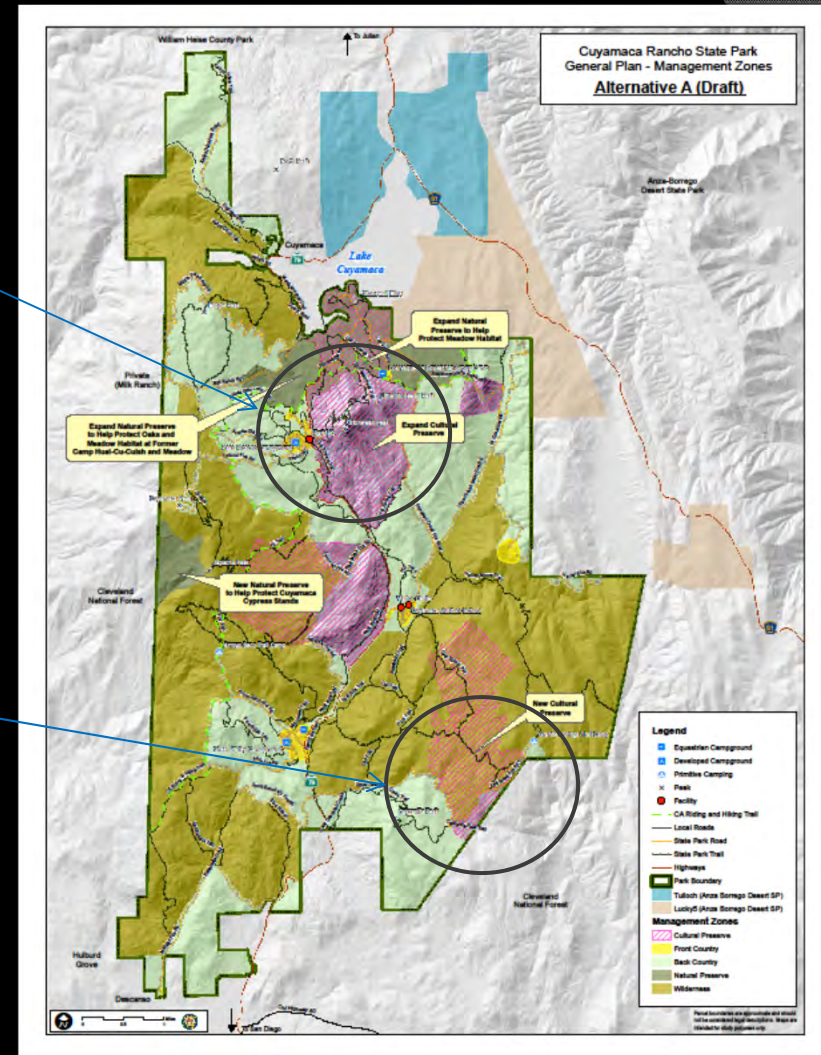
Joaquin from San Diego enjoys a “snowball fight”

- ◎ Park could be more relevant to:
 - City residents
 - Non-traditional users
 - Minorities
 - Youth

Potential General Plan Ideas

Cultural Preserves:

- Enlarge existing Ah-ha' Kwe-ah-mac CP to incorporate sacred Stonewall Peak, village and burial sites.
- Increase size of Cuish Cuish (East Mesa) CP to incorporate the largest recorded prehistoric site in Park.



Management Zones Map

Potential General Plan Ideas

“Historic” Management Zone:

- *Option 1:* Reconstruct portions of historic mining town for adaptive, public use
- *Option 2:* Stronger interpretation without rebuilding

- **Option 1:** Re-build Hual-Cu-Cuish for public, structured use
- **Option 2:** Interpret history of site but do not re-build

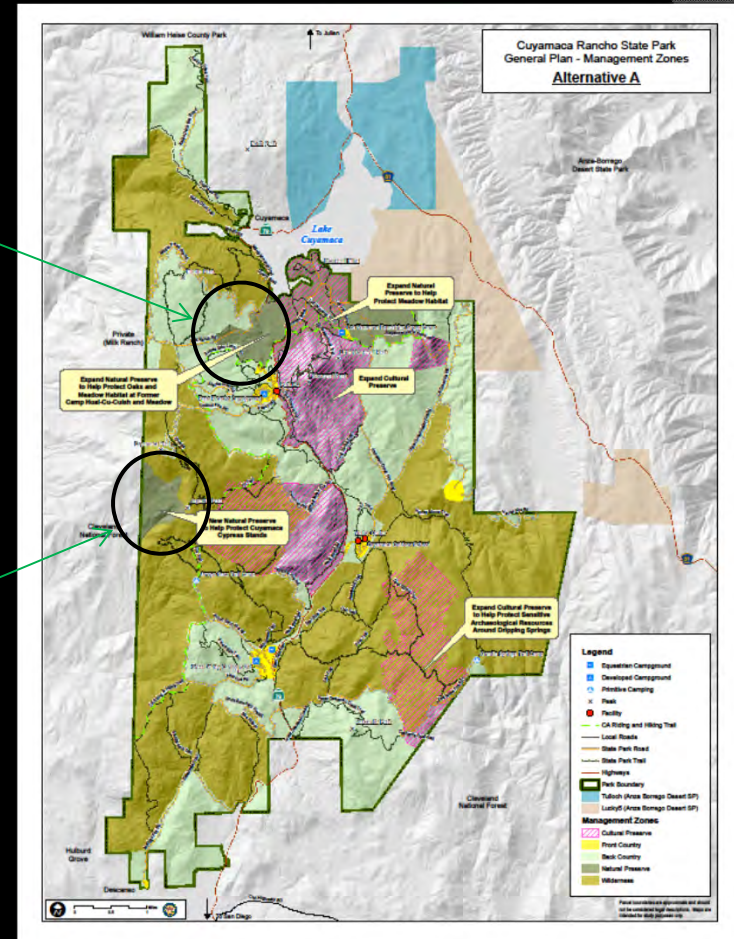


Reconstructed Miner's Cabin

Potential General Plan Ideas

Natural Preserves:

- Enlarge existing Cuyamaca Meadow Natural Preserve to incorporate additional meadows and resources
- Designate new 175-acre NP to protect Cuyamaca Cypress



Management Zones Map

Potential General Plan Ideas

Make Park more relevant to potential park users:

- Place new emphasis on programs for youth.



Photo courtesy of Cuyamaca Outdoor School

Potential General Plan Ideas

Make Park more relevant to potential park users:

- Place new emphasis on programs for youth.
- Provide alternative language materials and programs.



Photo courtesy of Cuyamaca Outdoor School

Potential General Plan Ideas

Make Park more relevant to potential park users:

- Place new emphasis on programs for youth.
- Provide alternative language materials and programs.
- More family-friendly activities and events.



Photo courtesy of Cuyamaca Outdoor School

Potential General Plan Ideas

Make Park more relevant to potential park users:

- Place new emphasis on programs for youth.
- Provide alternative language materials and programs.
- More family-friendly activities and events.
- Cultivate relationships with programs in inner-city and Mexico.



Photo courtesy of Cuyamaca Outdoor School

Potential General Plan Ideas

Make Park more relevant to potential park users:

- Place new emphasis on programs for youth.
- Provide alternative language materials and programs.
- More family-friendly activities and events.
- Cultivate relationships with programs in inner-city and Mexico.
- Promote public events that increase exposure and support for the park.



Photo courtesy of Cuyamaca Outdoor School

Potential General Plan Ideas

New Collaborative Efforts:

- Partner with stakeholder groups to co-manage resources and enhance interpretation.



Outdoor School nature hike

Potential General Plan Ideas

New Collaborative Efforts:



Outdoor School nature hike

- Partner with stakeholder groups to co-manage resources and enhance interpretation.
- Include training for staff and volunteers to conduct outreach programs in the community.

Potential General Plan Ideas

New Collaborative Efforts:



Outdoor School nature hike

- ◎ Partner with stakeholder groups to co-manage resources and enhance interpretation.
- ◎ Include training for staff and volunteers to conduct outreach programs in the community.
- ◎ Increase coordination with Outdoor School.

Potential General Plan Ideas

“Gateway” Zone: SR 79 and its 8 day-use parking lots:



“Trout Pond” day use parking

- ◎ Create “Gateway” Management Zone to recognize vehicle access, scenic viewing, orientation to Park, and snow play.



Parking for Snow play

Potential General Plan Ideas

“Gateway” Zone: SR 79 and its 8 day-use parking lots:



“Trout Pond” day use parking



Parking for Snow play

- ◎ Create “Gateway” Management Zone to recognize vehicle access, scenic viewing, orientation to Park, and snow play.
- ◎ Explore use of diverse media (radio, cell phone, bilingual wayside panels, etc).

Potential General Plan Ideas

“Gateway” Zone: SR 79 and its 8 day-use parking lots:



“Trout Pond” day use parking



Parking for Snow play

- Create “Gateway” Management Zone to recognize vehicle access, scenic viewing, orientation to Park, and snow play.
- Explore use of diverse media (radio, cell phone, bilingual wayside panels, etc).
- Develop short interpretive loop trails

Potential General Plan Ideas

“Gateway” Zone: SR 79 and its 8 day-use parking lots:



“Trout Pond” day use parking



Parking for Snow play

- Create “Gateway” Management Zone to recognize vehicle access, scenic viewing, orientation to Park, and snow play.
- Explore use of diverse media (radio, cell phone, bilingual wayside panels, etc).
- Develop short interpretive loop trails
- Provide roving interpretation on weekends and holidays.

Potential General Plan Ideas



Dyar House ruins



Former Cal Fire Station

Visitor Use Facilities:

- Option 1: Rebuild Dyar House and use as permanent Visitor Center and satellite park offices
- Option 2: Interpret the Dyar House ruin (Story of Cedar Fire)
- Consider former Cal Fire Station for use as satellite Visitor Center and staff/volunteer offices.

Potential General Plan Ideas

Campgrounds:



Green Valley Horse Camp

- Improve Green Valley Horse Camp (level and enlarge some sites, more water hookups, add shade ramadas)
- Redesign Green Valley and Paso Picacho Campgrounds to provide better experiences
- Continue to work with stakeholder groups to find alternatives for an equestrian campground

Potential General Plan Ideas



Stockpile at Stonewall Mine



Mack Ranch

Operations Facilities:

- Relocate material storage yard from Stonewall Mine
- Refurbish Mack Ranch property for Park operational and maintenance use.

Potential General Plan Ideas

Trails:

- Call for Roads and Trails Management Plan



Potential General Plan Ideas

Trails:

- Call for Roads and Trails Management Plan
- Improve north-south trail connections by converting additional trails to Multi-Use



Potential General Plan Ideas

Trails:



- Call for Roads and Trails Management Plan
- Improve north-south trail connections by converting additional trails to Multi-Use
- Establish trail connection(s) with ABDSP

Potential General Plan Ideas

Trails:



- Call for Roads and Trails Management Plan
- Improve north-south trail connections by converting additional trails to Multi-Use
- Establish trail connection(s) with ABDSP
- Recognize and interpret Native American and Fages trails

Potential General Plan Ideas

Trails:



- Call for Roads and Trails Management Plan
- Improve north-south trail connections by converting additional trails to Multi-Use
- Establish trail connection(s) with ABDSP
- Recognize and interpret Native American and Fages trails
- Add creek and river crossings

Potential General Plan Ideas



Trails:

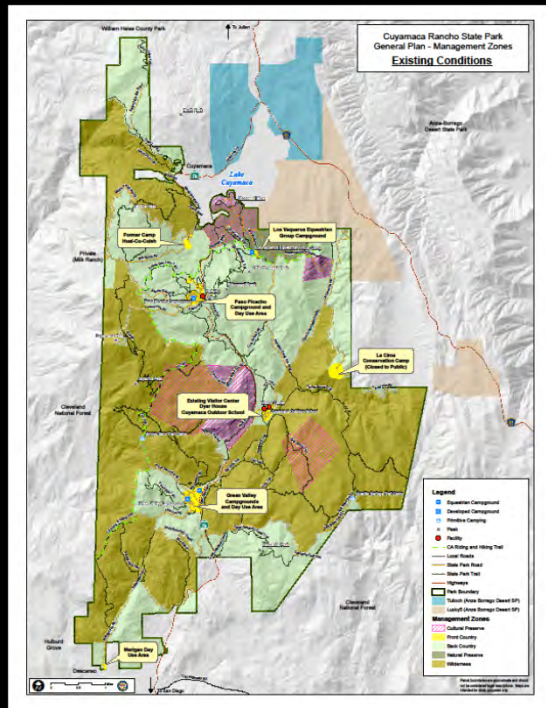
- Call for Roads and Trails Management Plan
- Improve north-south trail connections by converting additional trails to Multi-Use
- Establish trail connection(s) with ABDSP
- Recognize and interpret Native American and Fages trails
- Add creek and river crossings
- Add short, accessible loop trails near VC and some SR 79 day-use parking areas

Management Zone Matrix

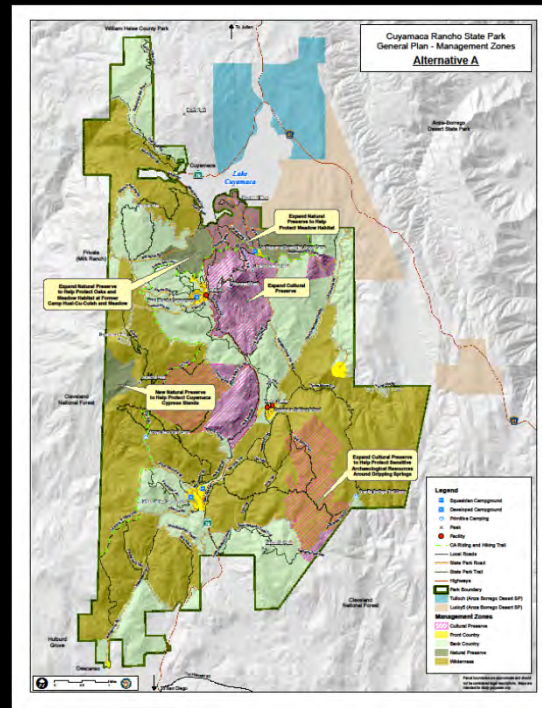
Management Zones Matrix

Zones:	Gateway	Front-Country	Back-Country	Wilderness	Natural Preserve	Cultural Preserve	Historic
Zone Description	This zone includes the portion of State Route 79 right-of-way that runs through the Park including eight (8) existing day-use parking areas/bushouts. This zone will serve as a gateway to the park and is focused on vehicle access, sightseeing, day use parking, park orientation, and trail access.	This zone includes developed areas such as campgrounds, visitor centers, picnic areas, parking, and operations facilities as well as the historic Dyer House and Cuyamaca Outdoor School. This zone is managed for visitor access, orientation, education, and recreation as well as park operations.	This zone generally includes non-wilderness, central areas of the park adjacent to the Gateway Zone or Front-Country Zone. This zone represents a transition between the Front-Country or Gateway Zones and Wilderness.	This zone includes existing and proposed State Wilderness, and is managed primarily to preserve the area's wilderness values such as naturalness, undeveloped, and expansive.	This zone includes existing and proposed Natural Preserves and contains significant, rare, and/or endangered natural resources. This zone is focused on the preservation, protection, and interpretation of the area's natural resources.	This zone includes existing and proposed Cultural Preserves and contains a high concentration of significant cultural resources. This zone is focused on the preservation, protection, and interpretation of the area's cultural resources.	This zone includes the Blonswal Mine/Cuyamaca City site which lies within the Ah-Ha-Cuyamaca Cultural Preserve as well as the former Camp Hual-Cui-Culsh. This zone is focused on protecting, preserving, and interpreting the significant historic resources of the area.
Classification	State Park	State Park	State Park	State Wilderness	State Natural Preserve	State Cultural Preserve	State Cultural Preserve (at Blonswal Mine) State Park (at former Camp Hual-Cui-Culsh)
Resource Character and Management (Carrying Capacity Objective)	<ul style="list-style-type: none"> - Protect scenic viewsheds - Provide for positive first impressions to the park - Development includes facilities to provide vehicle access and parking, and interpretive elements to support orientation to the park. 	<ul style="list-style-type: none"> - Development includes a diversity of facilities to support park operations, visitor use, and interpretation and education, mixed with open space and natural settings. 	<ul style="list-style-type: none"> - No facilities or development other than fire roads, trails, minor interpretive elements, and primitive trail camps. 	<ul style="list-style-type: none"> - No facilities or development other than trails and minor interpretive elements - No mechanical conveyances allowed (Per Public Resources Code) - Natural resources are in as pristine a condition as possible and are minimally modified only for wilderness visitor use and resource protection 	<ul style="list-style-type: none"> - No facilities or development other than fire roads and trails - Natural resources are in as pristine a condition as possible and the zone is managed foremost to protect natural resources 	<ul style="list-style-type: none"> - No facilities or development other than fire roads and trails - Zone is managed foremost to protect cultural resources 	<ul style="list-style-type: none"> - Development in this zone consists primarily of historic structures and additional facilities necessary for adaptive reuse, and/or public education and enjoyment.
Visitor Experiences (Carrying Capacity Objective)	<ul style="list-style-type: none"> - Visitors will gain access and be oriented to the park, experience scenic vistas, and have the option to park their vehicles during the day and access the trail network. 	<ul style="list-style-type: none"> - Visitors will have access to a wide variety of experiences within this zone, including camping, participation in group activities, enjoying the convenience of developed facilities, as well as introduction to the natural setting. 	<ul style="list-style-type: none"> - Visitors will have the opportunity to transition from busier and noisier high use/developed areas to the relaxed and quieter wilderness areas of the park via the trail system. 	<ul style="list-style-type: none"> - Within this zone, visitors will be immersed in an undeveloped and wild environment, and will have the opportunity to experience solitude, natural sounds, a sense of remoteness and self-reliance. 	<ul style="list-style-type: none"> - Visitors will have the opportunity to become familiar with sensitive natural resources, natural processes, and the protections required. Visitor experiences will be compatible with this goal. 	<ul style="list-style-type: none"> - Visitors will have the opportunity to become aware of the importance, sensitivity and fragility of the area's cultural resources and protections required. Visitor experiences will be compatible with this goal. 	<ul style="list-style-type: none"> - Visitors will be able to learn about a historic mine and company town. Interpretational and educational facilities and programs for cultural resources will be available.
Time of Use	Day use only	Day and overnight use	Day use only	Day use only	Day use only	Day use only	Day and overnight use
Typical Visitor Activities/Uses	<ul style="list-style-type: none"> - Enjoying scenic views - Accessing trailheads - Acquiring park information (maps, services and programs, rules, regulations) - Viewing interpretive and education displays 	<ul style="list-style-type: none"> - Camping in designated areas - Picnicking - Attending interpretive and educational programs - Hiking, biking, and equestrian use on designated trails - Snow play 	<ul style="list-style-type: none"> - Camping in isolated primitive campsites - Hiking, biking, and equestrian use on designated trails - Interpretation and education through a range of methods that are complementary to the natural setting - Snow play 	<ul style="list-style-type: none"> - Hiking and equestrian use on designated trails (moats are outside of Wilderness) - Interpretive and educational programs focused on wilderness values and are mostly self-directed 	<ul style="list-style-type: none"> - Hiking on designated trails - Interpretive and educational programs focused on natural resource values, preservation and protection. 	<ul style="list-style-type: none"> - Hiking and equestrian use on designated trails - Interpretive and educational programs focused on cultural resource values, preservation and protection - Native American uses by permit 	<ul style="list-style-type: none"> - Hiking and equestrian use on designated trails - Interpretive and educational opportunities focused on historic resource values, preservation and protection
Range of Appropriate Facilities	<ul style="list-style-type: none"> - Day use parking - Interpretive elements - Trailhead features 	<ul style="list-style-type: none"> - Campsites (group and individual) - Overnight facilities such as cabins - Picnic areas - Visitor serving facilities - Concession facilities - Operations facilities - Interpretive elements - Roads, trails and trailhead features 	<ul style="list-style-type: none"> - Interpretive elements - Trails and trailhead features - Footbridges 	<ul style="list-style-type: none"> - Facilities are limited to those that protect or enhance resources and result in minimal intrusion to wilderness values. - Minor interpretive elements - Trails and trailhead features - Footbridges 	<ul style="list-style-type: none"> - Interpretive elements - Trails - Footbridges 	<ul style="list-style-type: none"> - Interpretive elements - Trails and trailhead features 	<ul style="list-style-type: none"> - Interpretive elements - Trails and trailhead features - Restored historically significant features and structures - Reconstructed cabins
Camping	- Camping not permitted	<ul style="list-style-type: none"> - Developed group and individual campsites - Water typically provided - Flush toilets and showers may be available 	<ul style="list-style-type: none"> - Isolated primitive campsites - Water typically not provided - Waterless toilets may be available 	<ul style="list-style-type: none"> - Camping not permitted - Water not provided - Waterless toilets not allowed 	<ul style="list-style-type: none"> - Camping not permitted - Water typically not provided - Waterless toilets not allowed 	<ul style="list-style-type: none"> - Camping not permitted - Water typically not provided - Waterless toilets not allowed 	<ul style="list-style-type: none"> - Camping not permitted - Overnight accommodations such as cabins may be available - Flush and waterless toilets may be available
Equestrian Use	<ul style="list-style-type: none"> - Day use parking of rigs and staging of horses allowed in designated areas - Hitching posts or corral not allowed - Water typically not provided - Equestrian camping not allowed 	<ul style="list-style-type: none"> - Developed individual and group equestrian campsites - Feeding and watering horses - Corral and hitching posts - Water typically provided - Riding on designated unpaved roads and trails only 	<ul style="list-style-type: none"> - Riding allowed on designated unpaved roads and trails only - Hitching posts in isolated areas along trails - Water typically not provided - Equestrian camping allowed in designated trail camps 	<ul style="list-style-type: none"> - Riding allowed on designated trails only - Hitching posts not allowed - Water not provided - Equestrian camping not allowed 	<ul style="list-style-type: none"> - No equestrian use 	<ul style="list-style-type: none"> - Riding allowed on designated trails only - Hitching posts may be allowed - Water not provided - Equestrian camping not allowed 	<ul style="list-style-type: none"> - Riding allowed on designated trails only - Hitching posts may be allowed - Water typically not provided - Equestrian camping not allowed
Mountain Bike Use	<ul style="list-style-type: none"> - Day use parking allowed - Trail access allowed 	<ul style="list-style-type: none"> - Mountain bikes allowed on designated roads and trails only 	<ul style="list-style-type: none"> - Mountain bikes allowed on designated roads and trails only - Mountain bike camping in designated trail camps 	<ul style="list-style-type: none"> - Mountain bikes not allowed - Mountain bike camping not allowed 	<ul style="list-style-type: none"> - Mountain bikes not allowed 	<ul style="list-style-type: none"> - Mountain bikes on paved roads only 	<ul style="list-style-type: none"> - Mountain bikes on paved roads only
Hiking	<ul style="list-style-type: none"> - Day use parking allowed - Trail access allowed 	<ul style="list-style-type: none"> - Hiking allowed on designated roads and trails only 	<ul style="list-style-type: none"> - Hiking allowed on designated roads and trails only 	<ul style="list-style-type: none"> - Hiking allowed on designated trails only 	<ul style="list-style-type: none"> - Hiking allowed on designated trails only 	<ul style="list-style-type: none"> - Hiking allowed on designated trails only 	<ul style="list-style-type: none"> - Hiking allowed on designated trails only

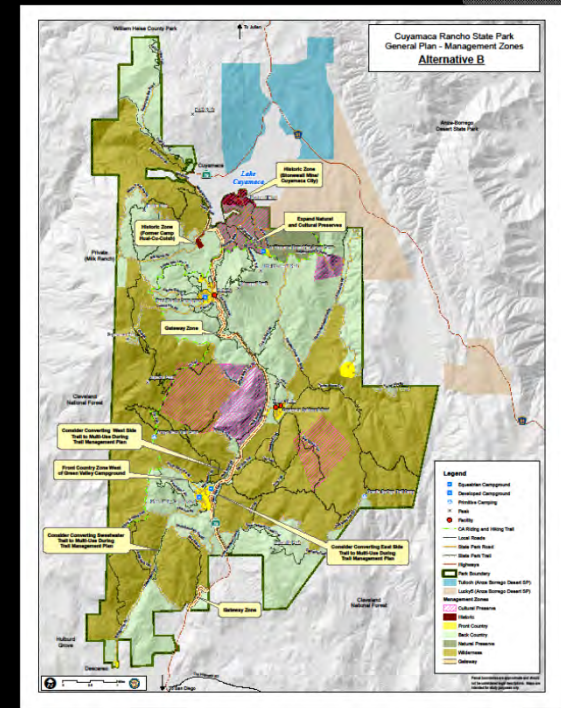
Management Zone Maps



Existing Conditions

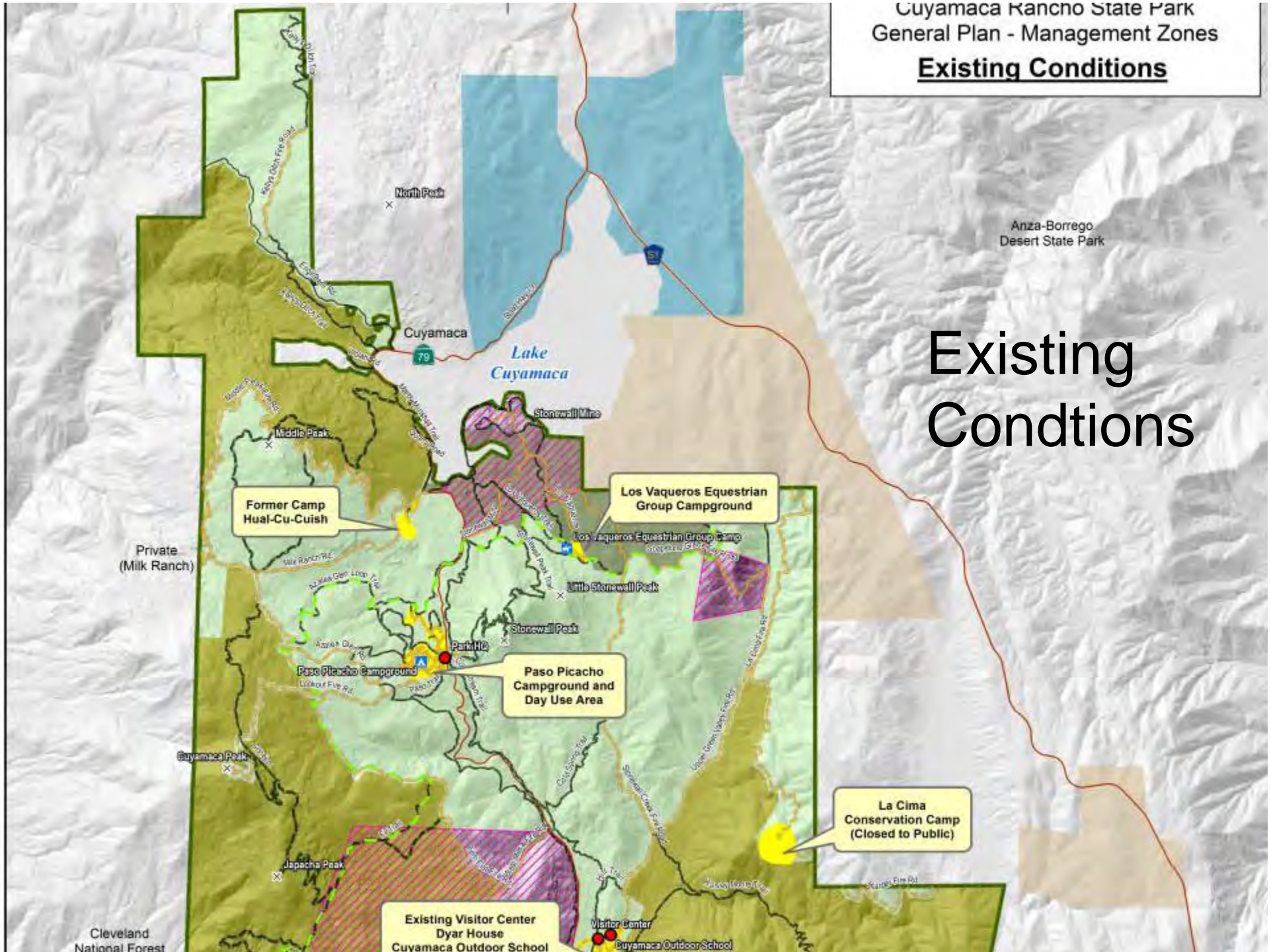


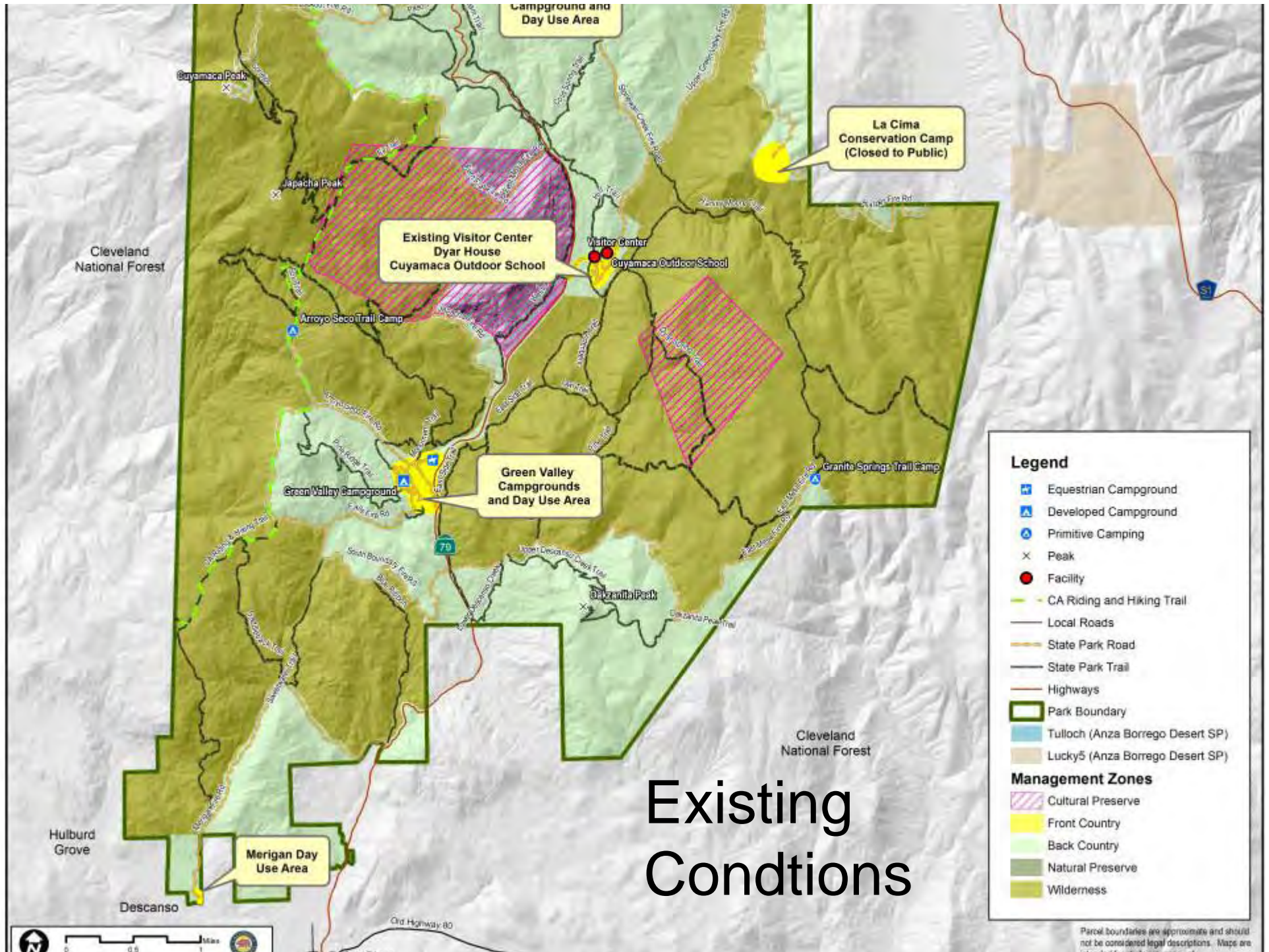
Alternative "A"



Alternative "B"

Cuyamaca Rancho State Park
General Plan - Management Zones
Existing Conditions



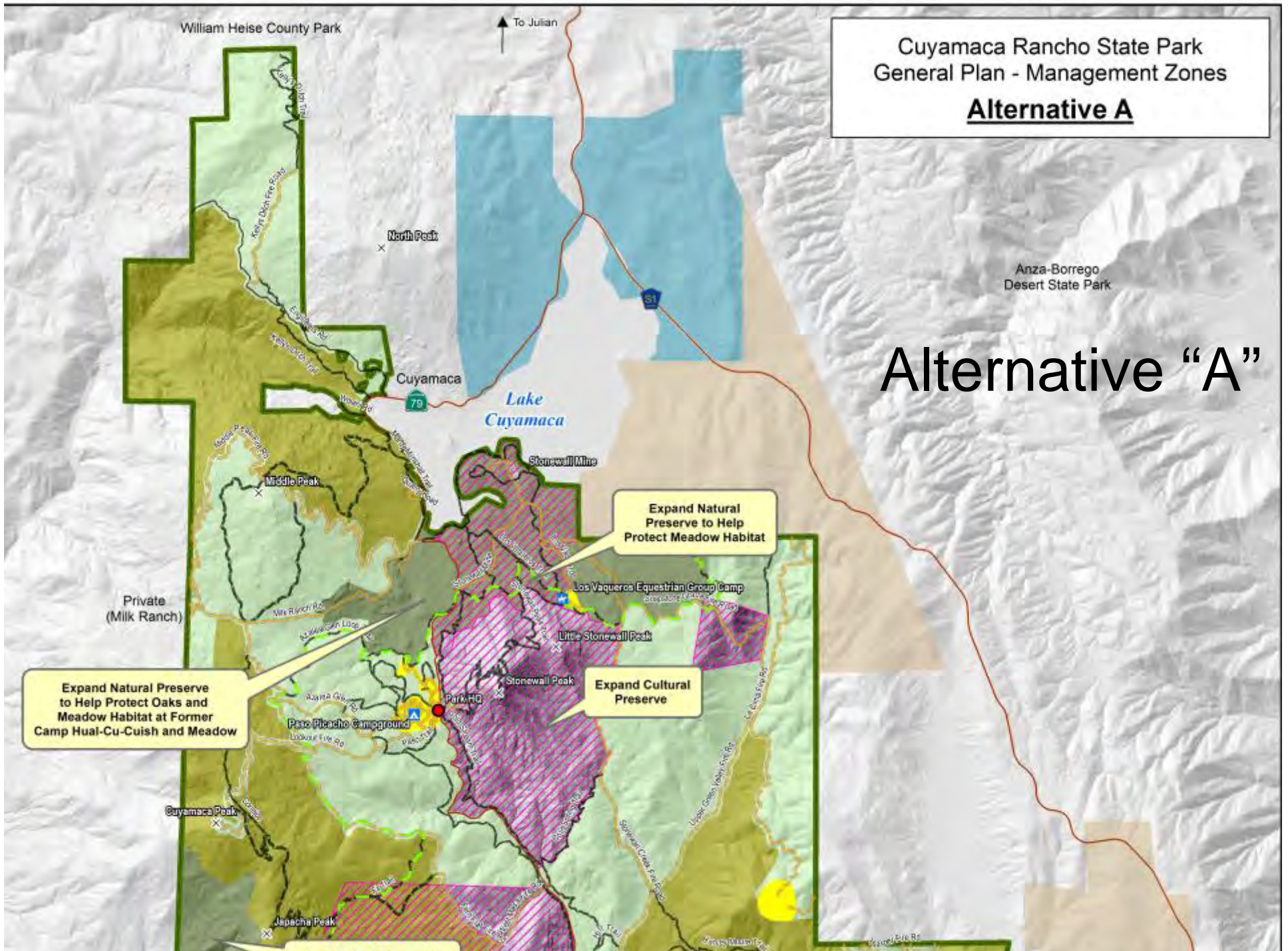


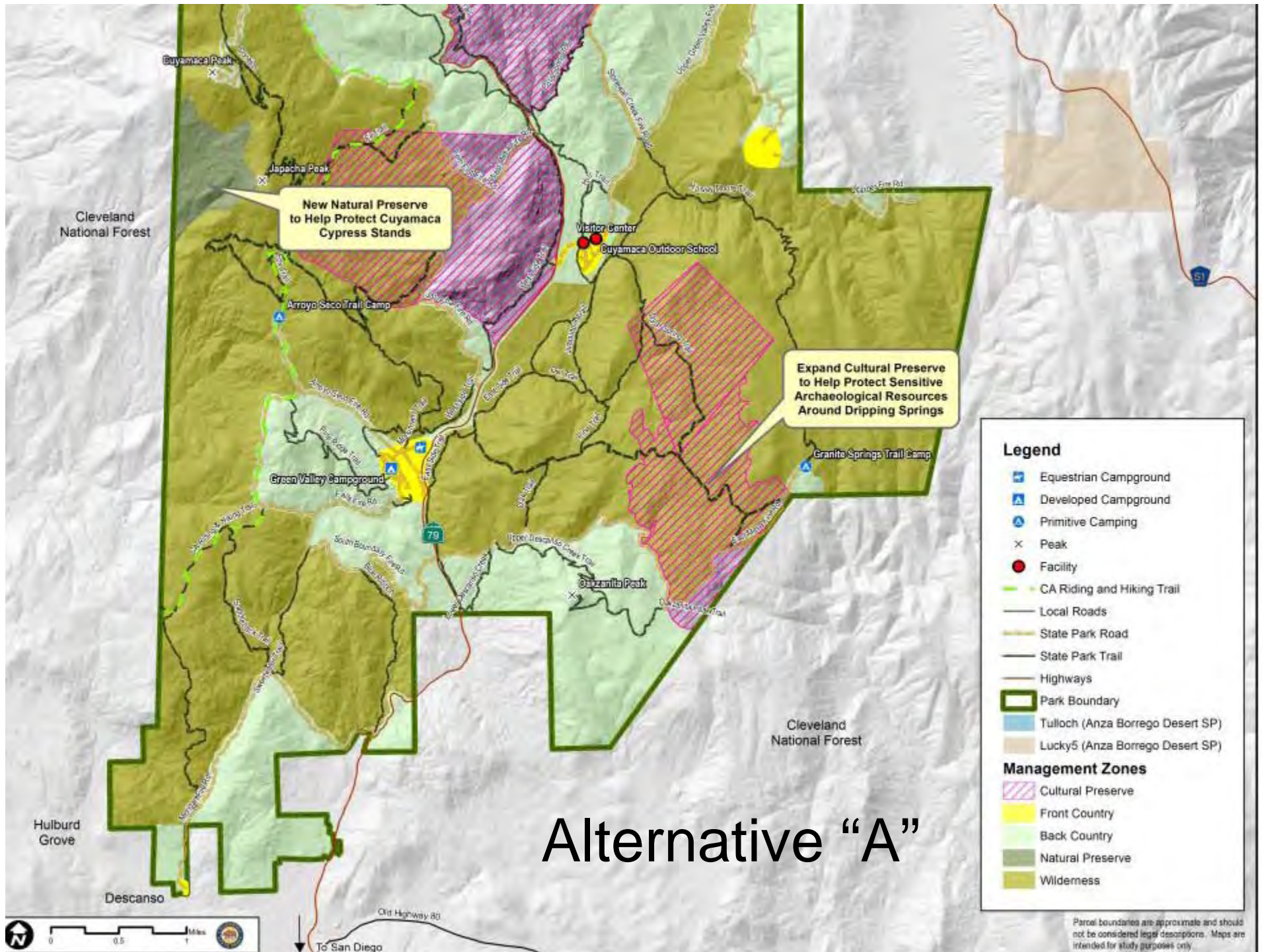
Parcel boundaries are approximate and should not be considered legal descriptions. Maps are not to scale.

Cuyamaca Rancho State Park
General Plan - Management Zones

Alternative A

Alternative "A"





New Natural Preserve to Help Protect Cuyamaca Cypress Stands

Expand Cultural Preserve to Help Protect Sensitive Archaeological Resources Around Dripping Springs

Alternative "A"

Legend

- Equestrian Campground
- Developed Campground
- Primitive Camping
- Peak
- Facility
- CA Riding and Hiking Trail
- Local Roads
- State Park Road
- State Park Trail
- Highways
- Park Boundary
- Tulloch (Anza Borrego Desert SP)
- Lucky5 (Anza Borrego Desert SP)

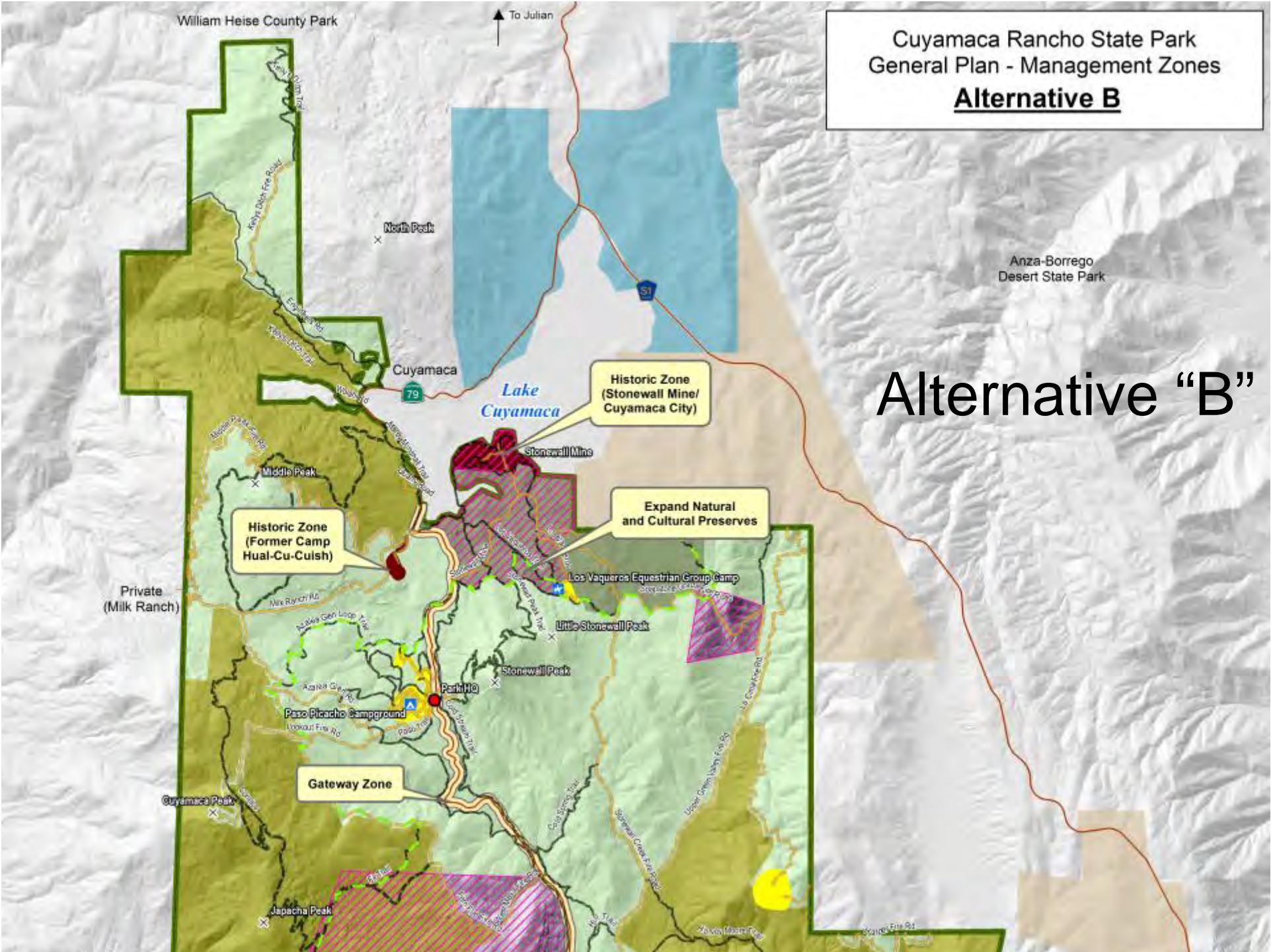
Management Zones

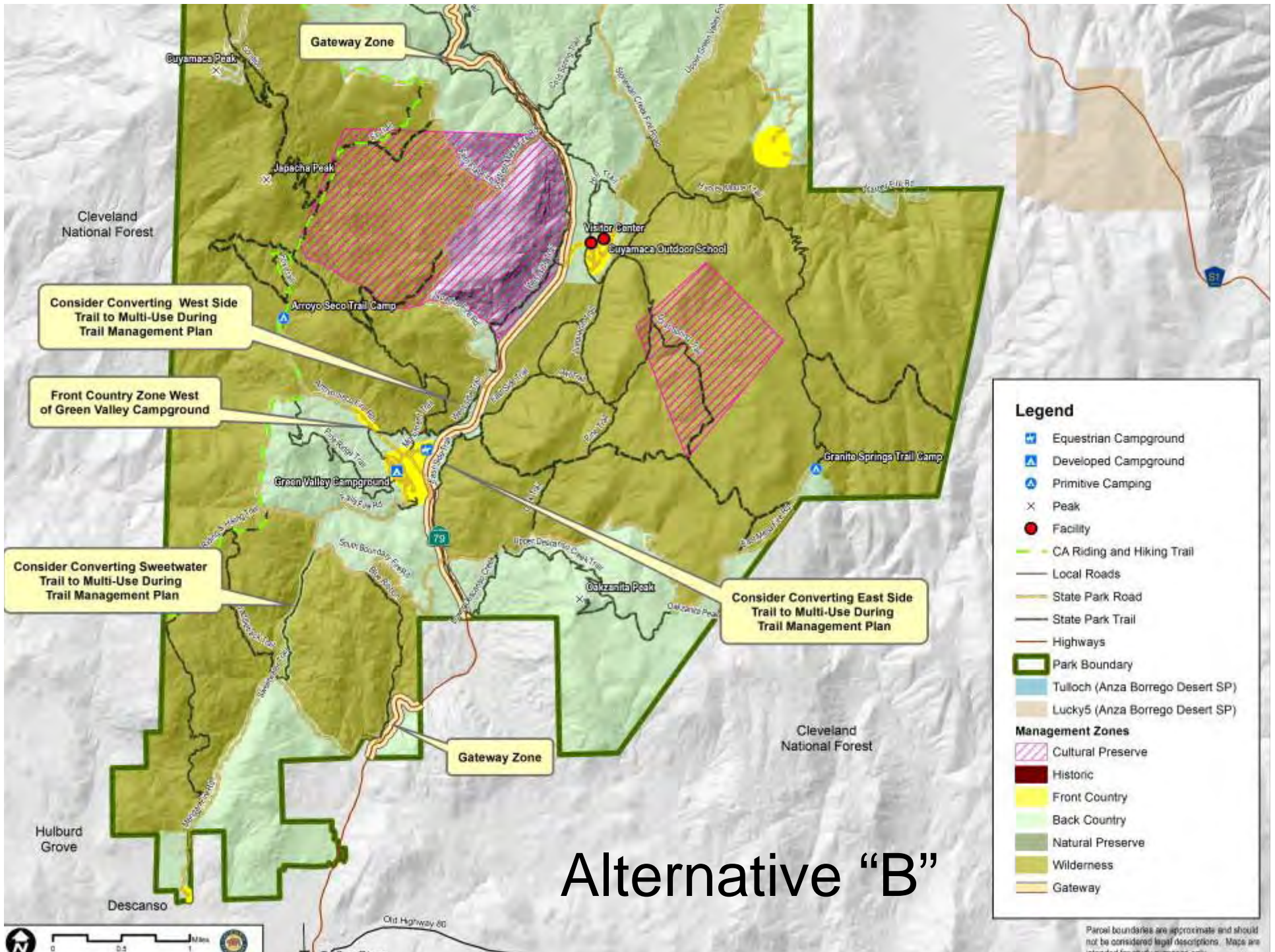
- Cultural Preserve
- Front Country
- Back Country
- Natural Preserve
- Wilderness

Parcel boundaries are approximate and should not be considered legal descriptions. Maps are intended for study purposes only.

Cuyamaca Rancho State Park
General Plan - Management Zones
Alternative B

Alternative "B"





Parcel boundaries are approximate and should not be considered legal descriptions. Maps are intended for informational use only.

CUYAMACA RANCHO
STATE PARK

GENERAL PLAN

