

Cuyamaca Rancho State Park General Plan



Natural Resources

Debbie Waldecker
Environmental Scientist



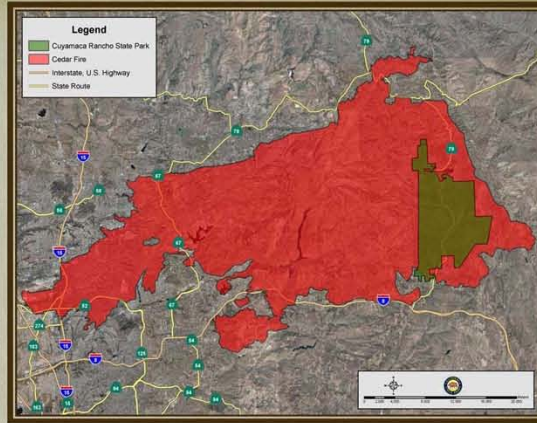
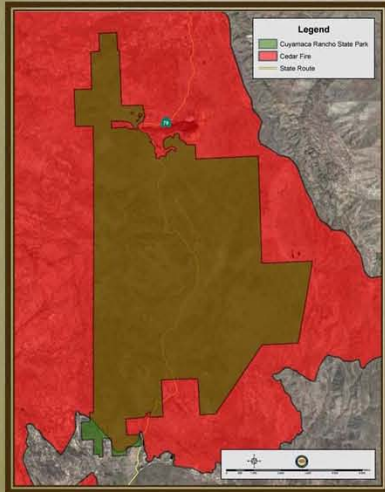
Information and data contained in this presentation are current as of October 3, 2012, and are based on information provided by the Colorado Desert District, the Southern Service Center, California State Parks data files, and previous work. All images and text are the property of California State Parks, unless otherwise noted.

Cedar Fire



October 25, 2003 – November 3, 2003

Cedar Fire

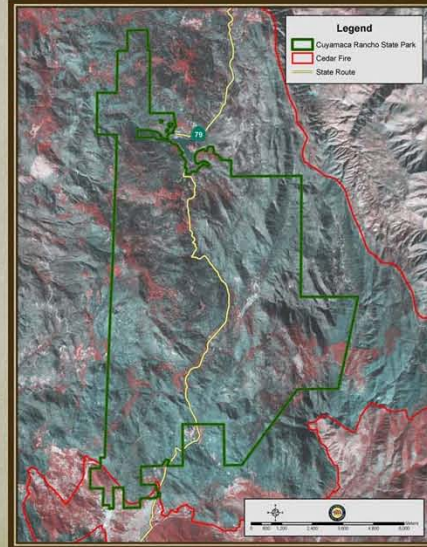


	Burned (Acres)
Cedar Fire	270,684
Cuyamaca Rancho SP	24,308

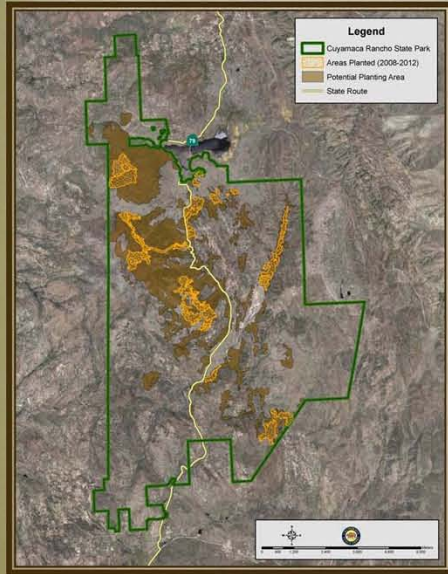
Post Cedar Fire



- Approximately 300 acres or 1% of the park was left unburned.
- Over 95% of the conifers and 17% of the oaks were killed.
- Cone-producing tree canopy was virtually destroyed.
- Seed cone survival was extremely low in most areas of the park.



Reforestation Project



	Acres
Areas Planted (2008-2012)	1,054
Target Acreage to be Replanted*	2,530

*Plantings will occur in areas occupied by pre-fire mixed conifer forest habitat. Total targeted reforested acreage will be approximately 10% of the park.

Native Species Planted	Percentage
Jeffrey Pine (<i>Pinus jeffreyi</i>)	65
Coulter Pine (<i>Pinus coulteri</i>)	15
Sugar Pine (<i>Pinus lambertiana</i>)	8
White Fir (<i>Abies concolor</i>)	7
Incense Cedar (<i>Calocedrus decurrens</i>)	5

Vegetation Communities

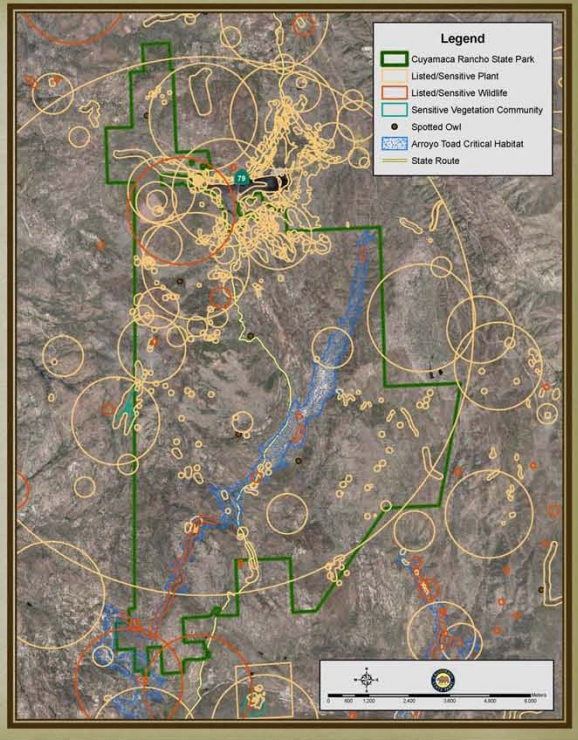
Rapid Assessment Method

- Use Infrared Imagery
- Perform Preliminary Classification
- Conduct Field Review/Surveys
- Verify/Reclassify Vegetation Types



Listed/Sensitive Species

- 99 Plant Species
 - 54 Wildlife Species
- Plus,
- 4 Vegetation Communities
 - 1 Critical Habitat Unit



Listed/Sensitive Species



Parish's Meadowfoam (*Limnanthes alba* ssp. *parishii*)



Arroyo Toad (*Anaxyrus californicus*)

Hydrology

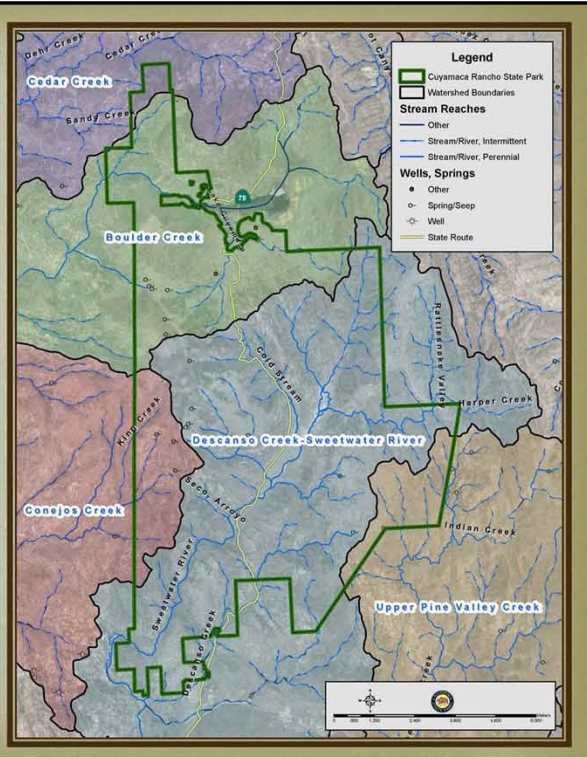
Largest Watershed

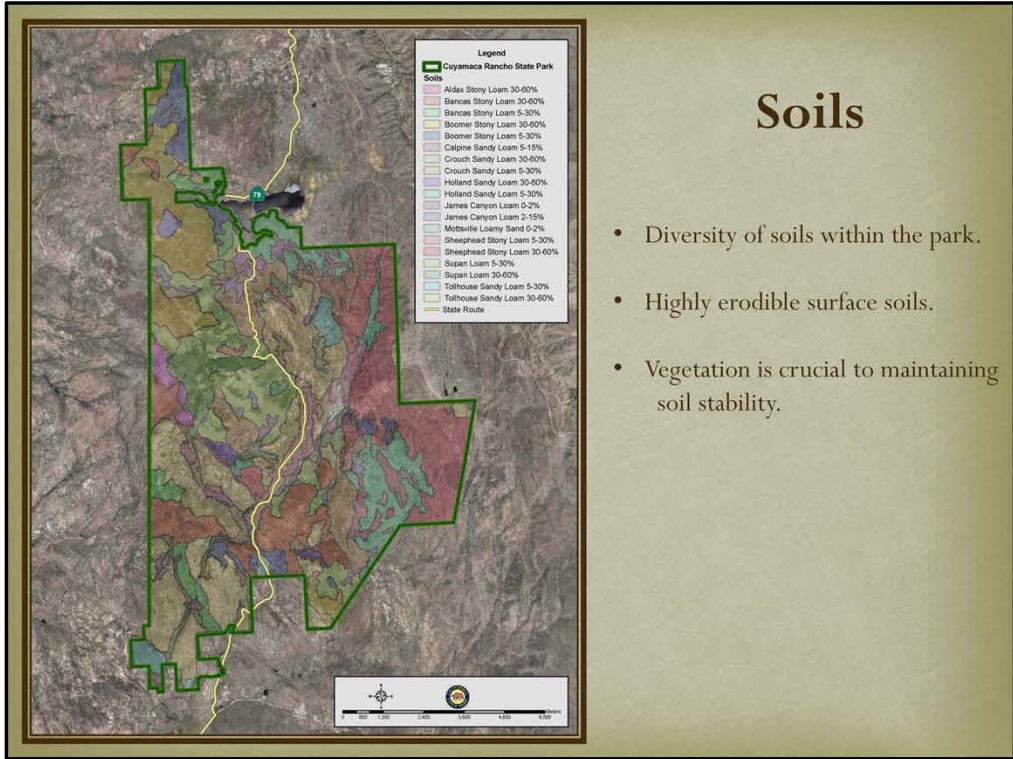
- Descanso Creek-Sweetwater River

Major Drainage

- Sweetwater River

Number of springs located within the western portion of the park.



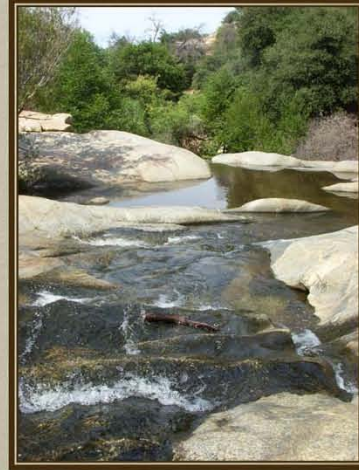


Soils

- Diversity of soils within the park.
- Highly erodible surface soils.
- Vegetation is crucial to maintaining soil stability.

Natural Resource Issues

- Accommodating visitor usage and access, while affording protection to natural resources.
- Obtaining an updated inventory of natural resources within the Park.



- Managing natural resources in the aftermath of the Cedar Fire.

