

MARSH CREEK STATE PARK

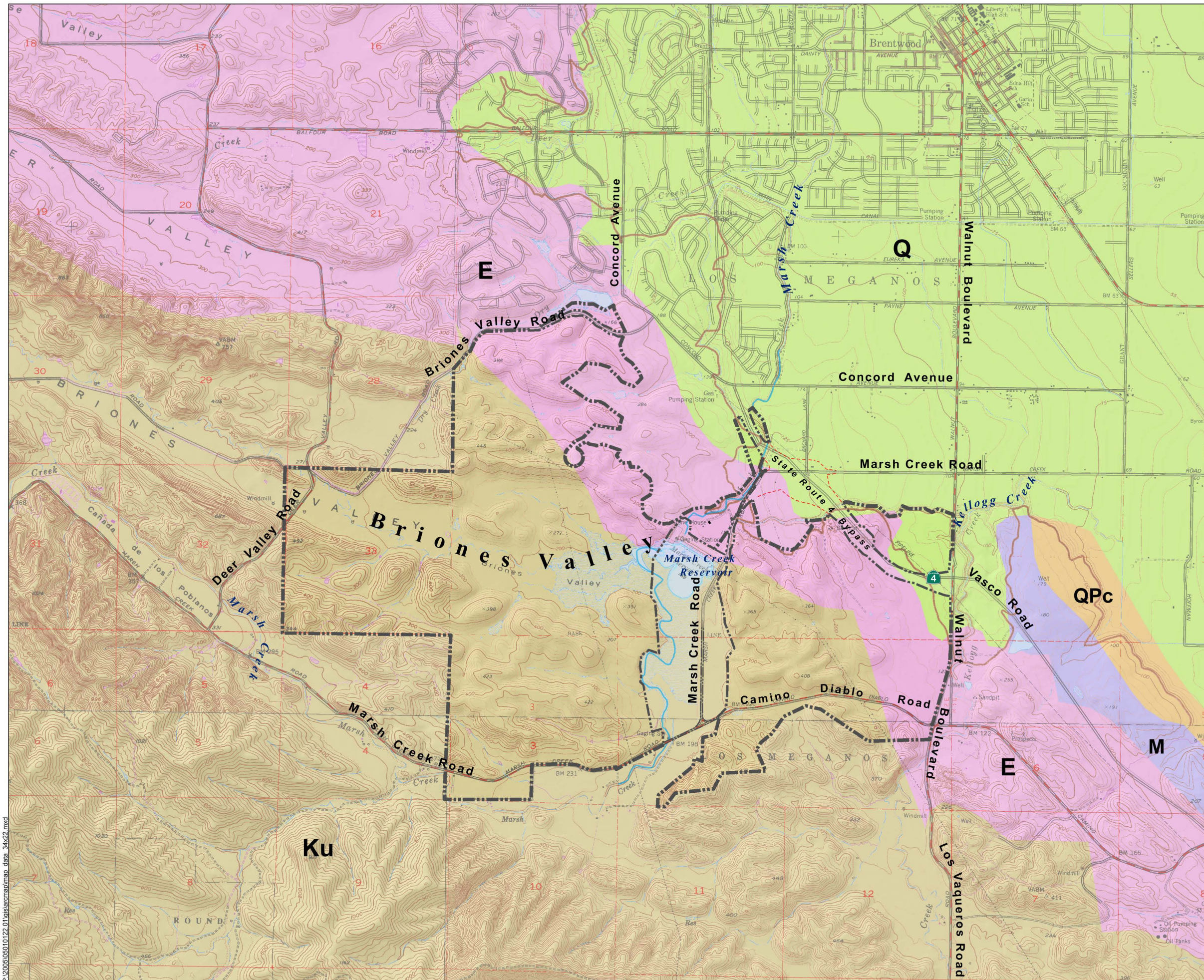
General Plan

Map 6 GEOLOGY

Geologic Units

Source: CA Dept of Conservation -- Mines & Geology

Map Code	Description
E	Eocene Marine
KU	Upper Cretaceous Marine
M	Miocene Marine
Q	Quaternary Marine / Alluvium
QPc	Plio-Pleistocene Marine



Scale 1 : 18,000
1" = 1500 feet



[Reduced 50 % at 11"x17"]

EDAW | AECOM

California Department of Parks & Recreation