

MARSH CREEK STATE PARK

General Plan

Map 13 MANAGEMENT ZONES

Primary Historic Zone

-  Operations Zone
Historic Area
Eastern
-  Visitor Facility Zone
Historic Area
Eastern
Round Valley
-  Operations and Visitor Facility Zones Overlap
-  Primary Historic Zone
-  Natural Resource Zone

[See Map 12]

Descriptions and uses permitted in each zone can be found in Chapter 3 Park Plan

 Flood Control Easement
[Contra Costa Co. Flood Control & Water Conservation District]

 Existing Parking and Trailhead



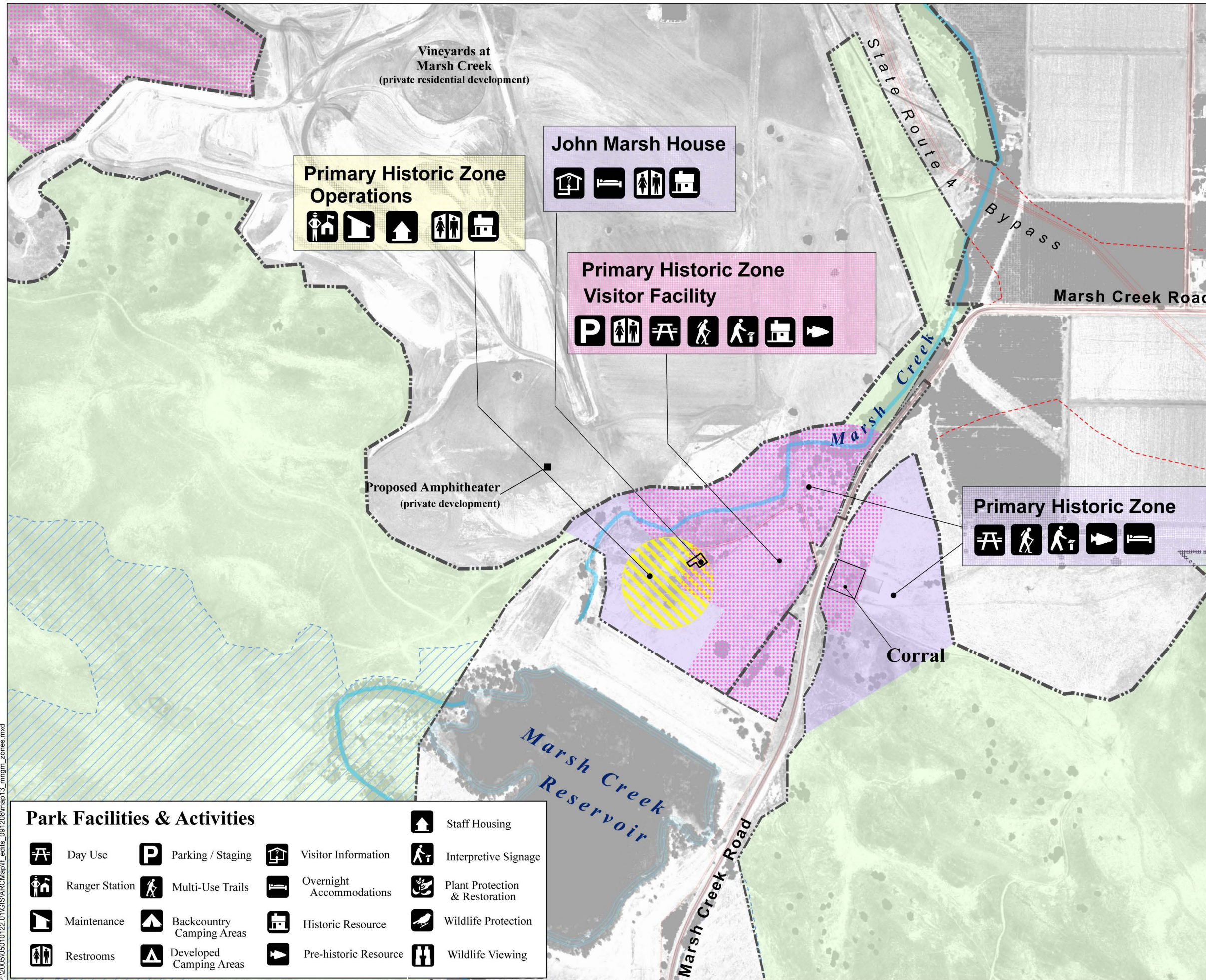
Scale 1 : 3,600
1" = 300 feet



[Reduced 50% at 11"x17"]

AECOM

California Department of Parks & Recreation



Primary Historic Zone Operations

John Marsh House

Primary Historic Zone Visitor Facility

Primary Historic Zone

Park Facilities & Activities

Day Use	Parking / Staging	Visitor Information	Interpretive Signage
Ranger Station	Multi-Use Trails	Overnight Accommodations	Plant Protection & Restoration
Maintenance	Backcountry Camping Areas	Historic Resource	Wildlife Protection
Restrooms	Developed Camping Areas	Pre-historic Resource	Wildlife Viewing

P:\2005\05610122_01\GIS\ARCMap\13_edits_091208\map13_mngm_zones.mxd