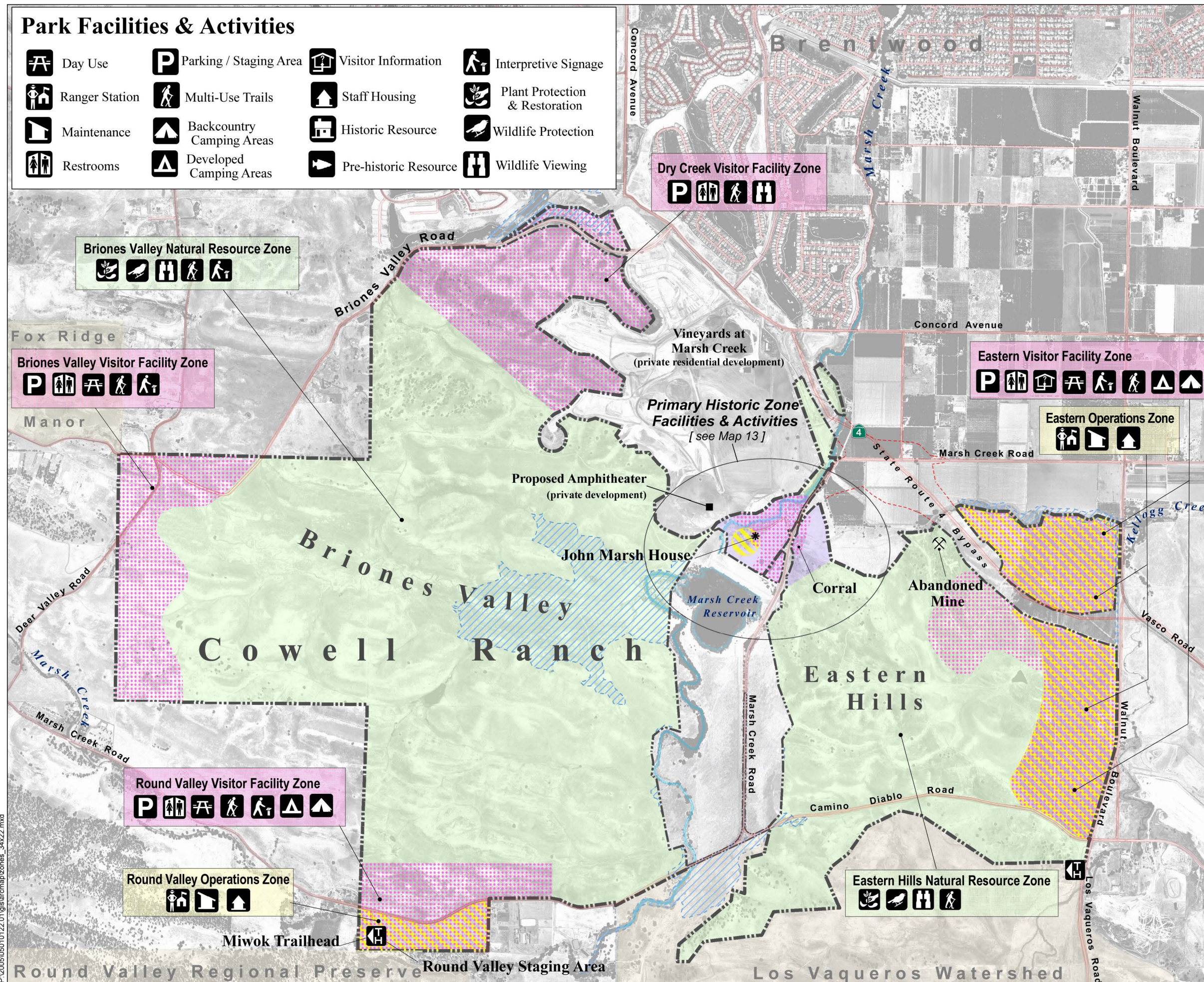


Park Facilities & Activities

- | | | | |
|----------------|---------------------------|-----------------------|--------------------------------|
| Day Use | Parking / Staging Area | Visitor Information | Interpretive Signage |
| Ranger Station | Multi-Use Trails | Staff Housing | Plant Protection & Restoration |
| Maintenance | Backcountry Camping Areas | Historic Resource | Wildlife Protection |
| Restrooms | Developed Camping Areas | Pre-historic Resource | Wildlife Viewing |



MARSH CREEK STATE PARK General Plan

Map 12

MANAGEMENT ZONES

- Operations Zone
 - Visitor Facility Zone
 - Operations and Visitor Facility Zones Overlap
 - Primary Historic Zone
 - Natural Resource Zone
- Historic Area Eastern**
- Historic Area Eastern Round Valley Briones Valley Dry Creek**
- Eastern Hills Briones Valley**

Flood Control Easement
[Contra Costa Co. Flood Control & Water Conservation District]

Existing Parking and Trailhead



Scale 1 : 12,000
1" = 1000 feet
[Reduced 50 % at 11"x17"]

AECOM

California Department of Parks & Recreation