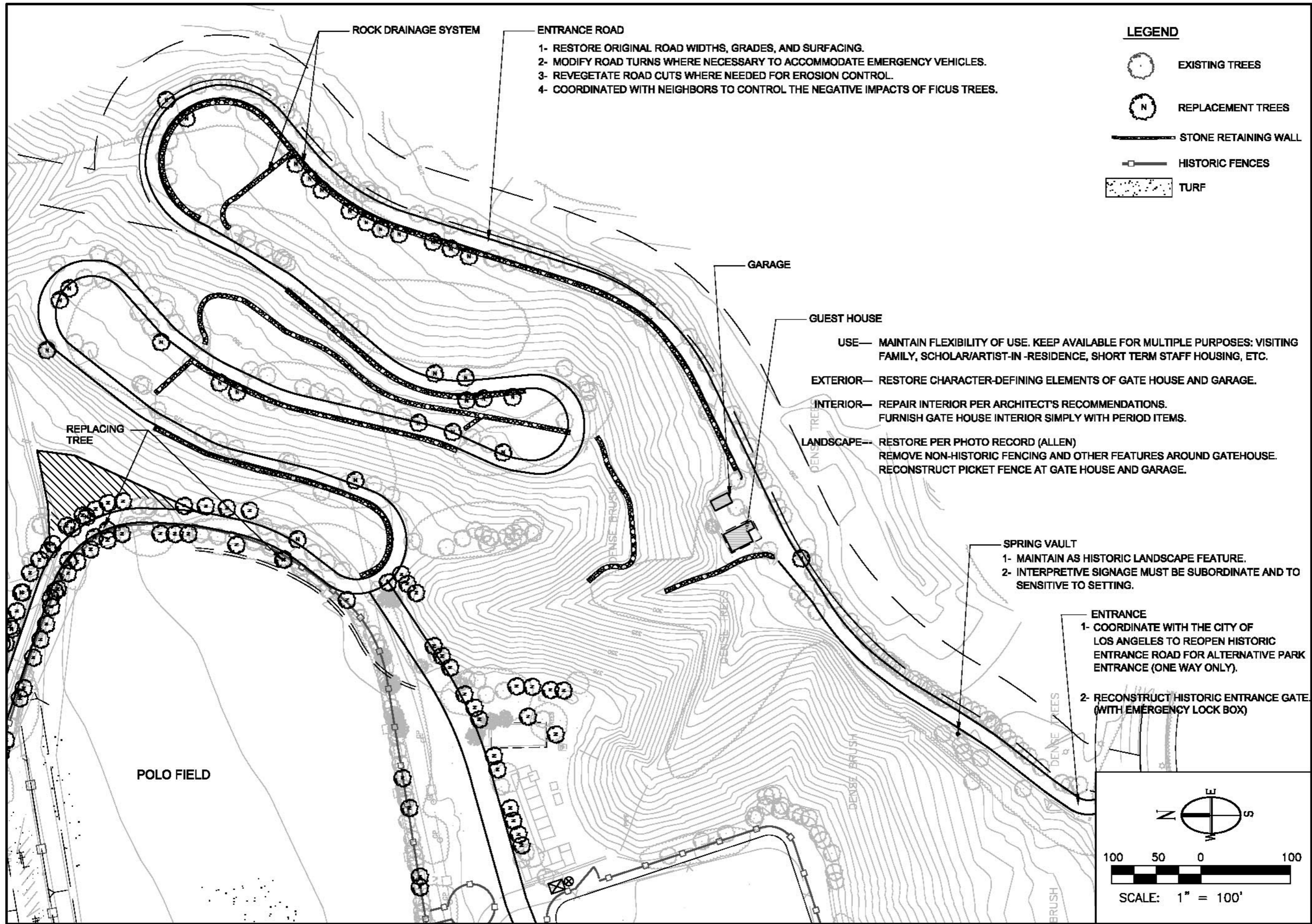




RESOURCES AGENCY OF CALIFORNIA
DEPARTMENT OF PARKS AND RECREATION
SOUTHERN SERVICE CENTER
APPROVED: _____ DATE: _____



- ENTRANCE ROAD**
- 1- RESTORE ORIGINAL ROAD WIDTHS, GRADES, AND SURFACING.
 - 2- MODIFY ROAD TURNS WHERE NECESSARY TO ACCOMMODATE EMERGENCY VEHICLES.
 - 3- REVEGETATE ROAD CUTS WHERE NEEDED FOR EROSION CONTROL.
 - 4- COORDINATED WITH NEIGHBORS TO CONTROL THE NEGATIVE IMPACTS OF FICUS TREES.

- LEGEND**
- EXISTING TREES
 - REPLACEMENT TREES
 - STONE RETAINING WALL
 - HISTORIC FENCES
 - TURF

- GUEST HOUSE**
- USE— MAINTAIN FLEXIBILITY OF USE. KEEP AVAILABLE FOR MULTIPLE PURPOSES: VISITING FAMILY, SCHOLAR/ARTIST-IN-RESIDENCE, SHORT TERM STAFF HOUSING, ETC.
 - EXTERIOR— RESTORE CHARACTER-DEFINING ELEMENTS OF GATE HOUSE AND GARAGE.
 - INTERIOR— REPAIR INTERIOR PER ARCHITECT'S RECOMMENDATIONS. FURNISH GATE HOUSE INTERIOR SIMPLY WITH PERIOD ITEMS.
 - LANDSCAPE— RESTORE PER PHOTO RECORD (ALLEN) REMOVE NON-HISTORIC FENCING AND OTHER FEATURES AROUND GATEHOUSE. RECONSTRUCT PICKET FENCE AT GATE HOUSE AND GARAGE.

- SPRING VAULT**
- 1- MAINTAIN AS HISTORIC LANDSCAPE FEATURE.
 - 2- INTERPRETIVE SIGNAGE MUST BE SUBORDINATE AND TO SENSITIVE TO SETTING.

- ENTRANCE**
- 1- COORDINATE WITH THE CITY OF LOS ANGELES TO REOPEN HISTORIC ENTRANCE ROAD FOR ALTERNATIVE PARK ENTRANCE (ONE WAY ONLY).
 - 2- RECONSTRUCT HISTORIC ENTRANCE GATE (WITH EMERGENCY LOCK BOX)

SHEET TITLE:
**CONSERVATION PLAN
AREA #8
HISTORIC ENTRANCE
AND GATEHOUSE**

PROJECT SITE:
**WILL ROGERS
STATE
HISTORIC PARK**

REVISIONS
▲ XX/XX/XX

DESIGNED K. ADAMS
DRAWN B. STEVENS
CHECKED XXX

DATE 12/08/02
SCALE AS SHOWN

PROJECT NO.
915-559-01

Z:\PROJECTS\AUTOCAD\

