

*Del Norte Coast Redwoods State Park
Mill Creek Watershed Addition
General Plan Amendment*

Alternatives Review and Public Input Workshop

Presented by:

Petra Unger, Project Manager

Phil Hendricks, Senior Recreation Planner

June 19, 2008



EDAW | AECOM

Meeting Purpose

Update on the planning process - Steps to Date






Purpose of the General Plan Amendment

- Integrate the Mill Creek Watershed Addition into the larger framework of the existing Redwood State and National Park General Management Plan/General Plan
- Serve as the primary management document for the park unit
- Confirm the acquisition's purpose within the existing GMP/GP
- Define a comprehensive framework that guides park unit development, ongoing management and public use



General Plan Amendment Process:


- Document existing conditions
- Identify and inform stakeholders, develop mailing list
- Identify issues and concerns (public, staff, MCAC)
- Develop alternatives for site use
- Identify preferred alternative
- Develop GPA
- Analyze environmental impacts
- Public Review of GPA/Draft EIR (fall 2008)



Planning Framework – Purchase Agreement

The intent of this agreement is to provide for a broad array of park and other public uses that are compatible with the primary goal that the property shall be restored to late seral forest characteristics and associated natural functions that maximize benefits to the salmonid species of its streams and wildlife associated with late seral forest.

- Examples of allowable public uses
- Highway 101 realignment (Last Chance Grade)
- Establishment of Mill Creek Advisory Committee



Planning Framework – Site Classification

- Mill Creek is part of Del Norte Coast Redwoods State Park
- State parks consist of relatively spacious areas of outstanding scenic or natural character, oftentimes also containing significant historical, archaeological, ecological, geological, or other similar values. (CPRC 5019.53)
- Motor vehicle use is “confined to paved areas and other areas specifically designated and maintained for normal ingress, egress, and parking.” (CPRC 5001.8)
- Hunting is not allowed in state parks. (CPRC 5003.1)

Steps to Date

Accommodate visitors:

- Site open to the public on weekends
- Varied opportunities included driving tours, hikes, nature study, stargazing, berry picking
- Over 2000 visitors this past season



Steps to date

Informational Meeting - June 21, 2007



Steps to date

Site Tour – June 23, 2007



Steps to Date

Road Network Tour - September 4, 2007



Steps to Date

- Public Scoping Meeting – October 4, 2007



A vertical strip on the left side of the slide shows a forest scene with several tree trunks and green foliage. The rest of the slide has a solid dark green background.

Steps to Date

Public scoping summary/mailing list:

- Approximately 70 attended scoping meeting
- 38 written comment letters received
- Summaries available on the planning website

Mailing list summary:

- 365 entries on mailing list
- 253 with physical addresses
- Please check your contact information on hard copy

Steps to Date

- State Parks/NPS staff workshop – January 9, 2008





Steps to Date

MCAC Input Meeting – January 10, 2008

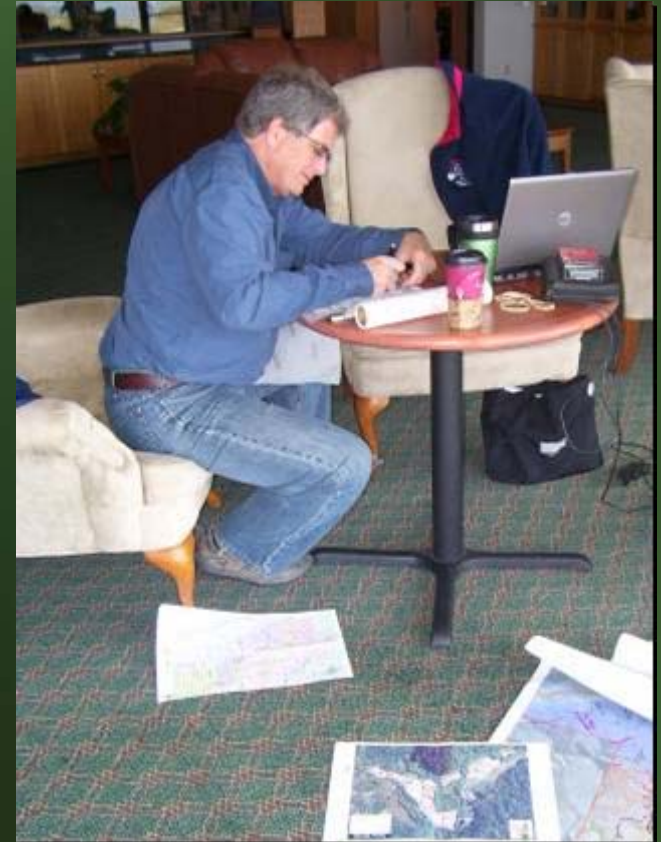
- *What is your vision for the future of the Mill Creek Watershed Addition?*
- *What are your key interests and concerns about the park unit's environment and resources*
- *What improvements would you like to see?*
- *Do you have information about the park unit that would be helpful to the planning process?*

Steps to Date

- April 17, 2008: Focused workshop with District staff to gather input on destinations/recreational opportunities at the site



Steps to Date



Development of draft alternatives for site use



Steps to date: Alternatives Development

Uses suggested during scoping but found incompatible due to unit classification and deed restrictions:

- Use by green sticker vehicles
- Access to Rattlesnake Ridge for OHV
- Hunting
- Commercial thinning/logging; State Forest
- ATV education center/free style arena
- Indoor/outdoor shooting range
- Gold panning or mining (except for interpretive purposes)



Steps to date: Alternatives Development

Elements common to all Alternatives:

- Continue ongoing efforts of restoration and road removal
- Implement deed restrictions
- Protect sensitive resources
- Provide ADA access wherever possible
- Interpret the property's unique history
- Develop access to vista points and site of interest



Steps to date: Alternatives Development

Elements common to all Alternatives: continued

- Develop and maintain partnerships with the community to pursue opportunity for sustainable site use
- Work with local Native American Tribes
- Maintain scenic vistas
- Plan for trail connections to surrounding areas
- Last Change Grade Alternative and powerline ROW
- Watershed management plan

Steps to Date

MCAC preview of draft alternatives – May 8





Steps to Date

- Development of Preferred Alternative
- Review of Alternatives by State Parks Policy, Planning and Programming Committee (PPPC)
- Preview of Alternatives by Board of Supervisors in 2x2 meeting
- Announcement of public workshop: postcards, press release, newspaper articles

Next Steps

- Public workshop to review and comment on alternatives - today
- Refine preferred alternative with input received from staff and the public (July)



Next Steps



- Conduct environmental review – EIR
- Public review of Preliminary GPA/Draft EIR in Fall of 2008

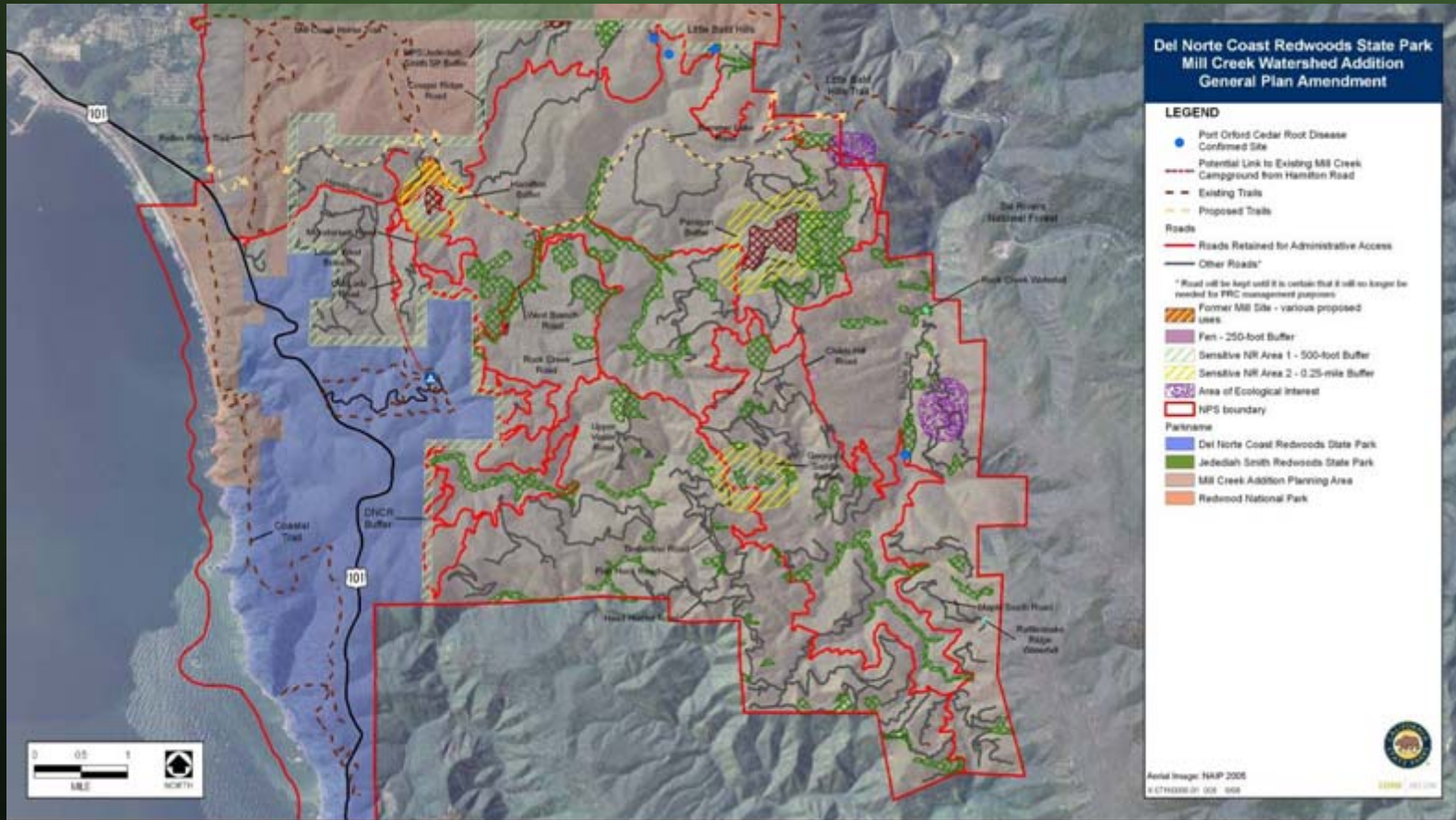
Final Steps

- Prepare response to comments
- Prepare final GPA
- Conduct Commission Hearing: Site tour followed by formal hearing and GPA adoption



Draft Alternatives

- Develop baseline map/identify constraints



A vertical strip on the left side of the slide shows a dense forest with various tree trunks and green foliage. The background of the rest of the slide is a solid dark green color.

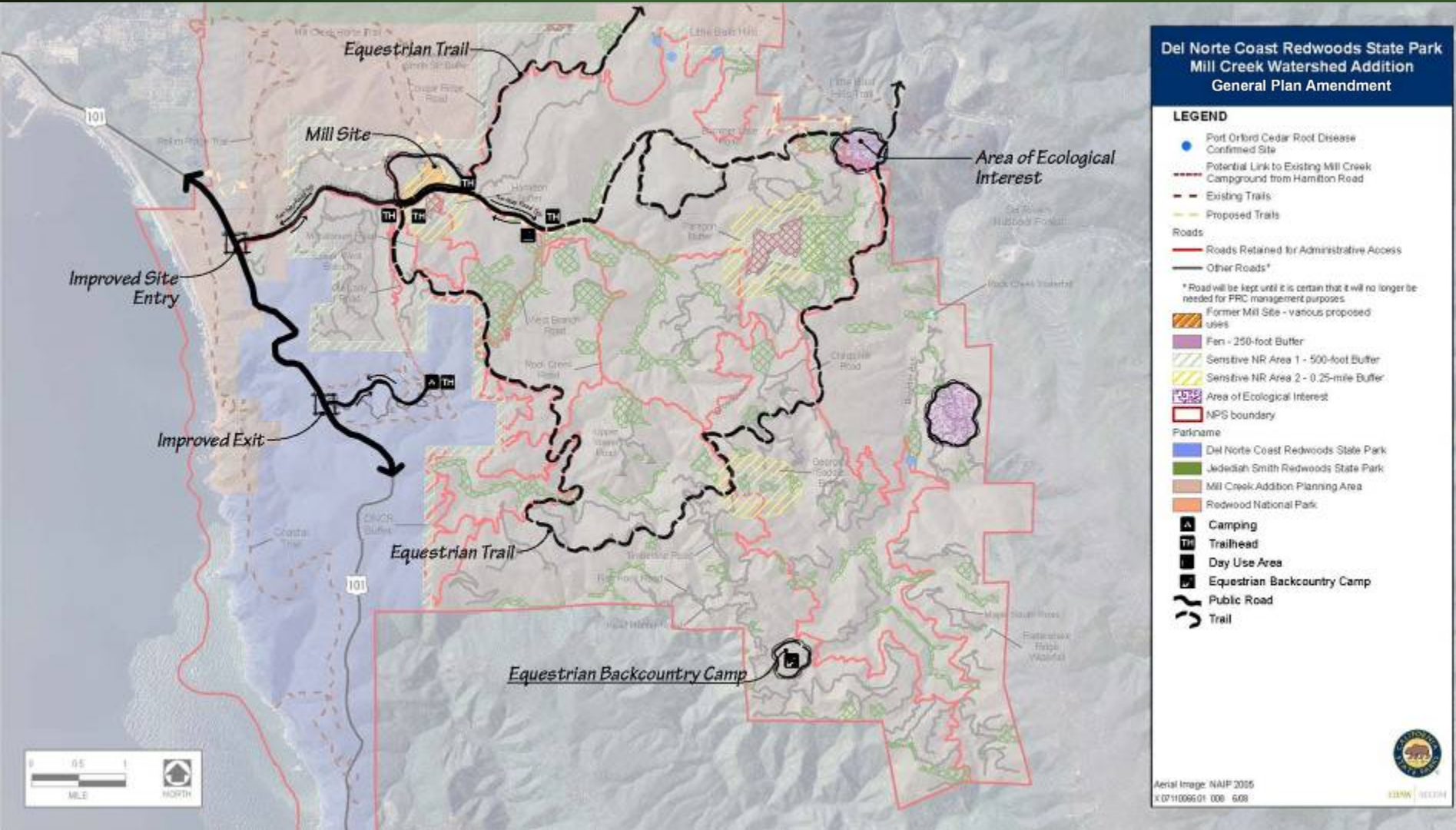
Draft Alternatives

Develop program matrix including each element of site use and management:

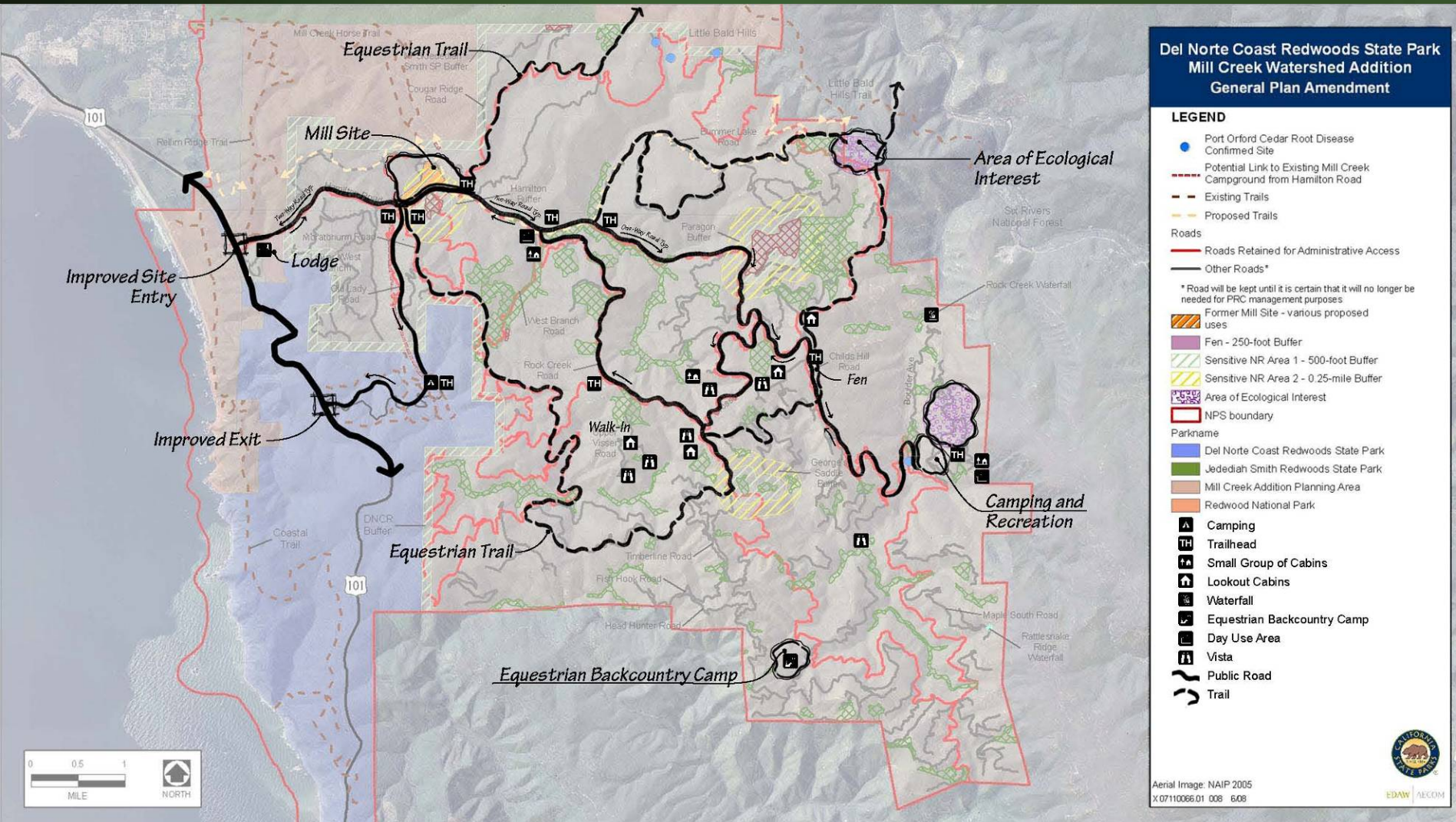
- Site entry/circulation
- Interpretive services area/lodge
- Operations area
- Research/education facility
- Trailheads/day use areas
- Loops/destination
- Camping/cabins
- Concessions

Alternative 1

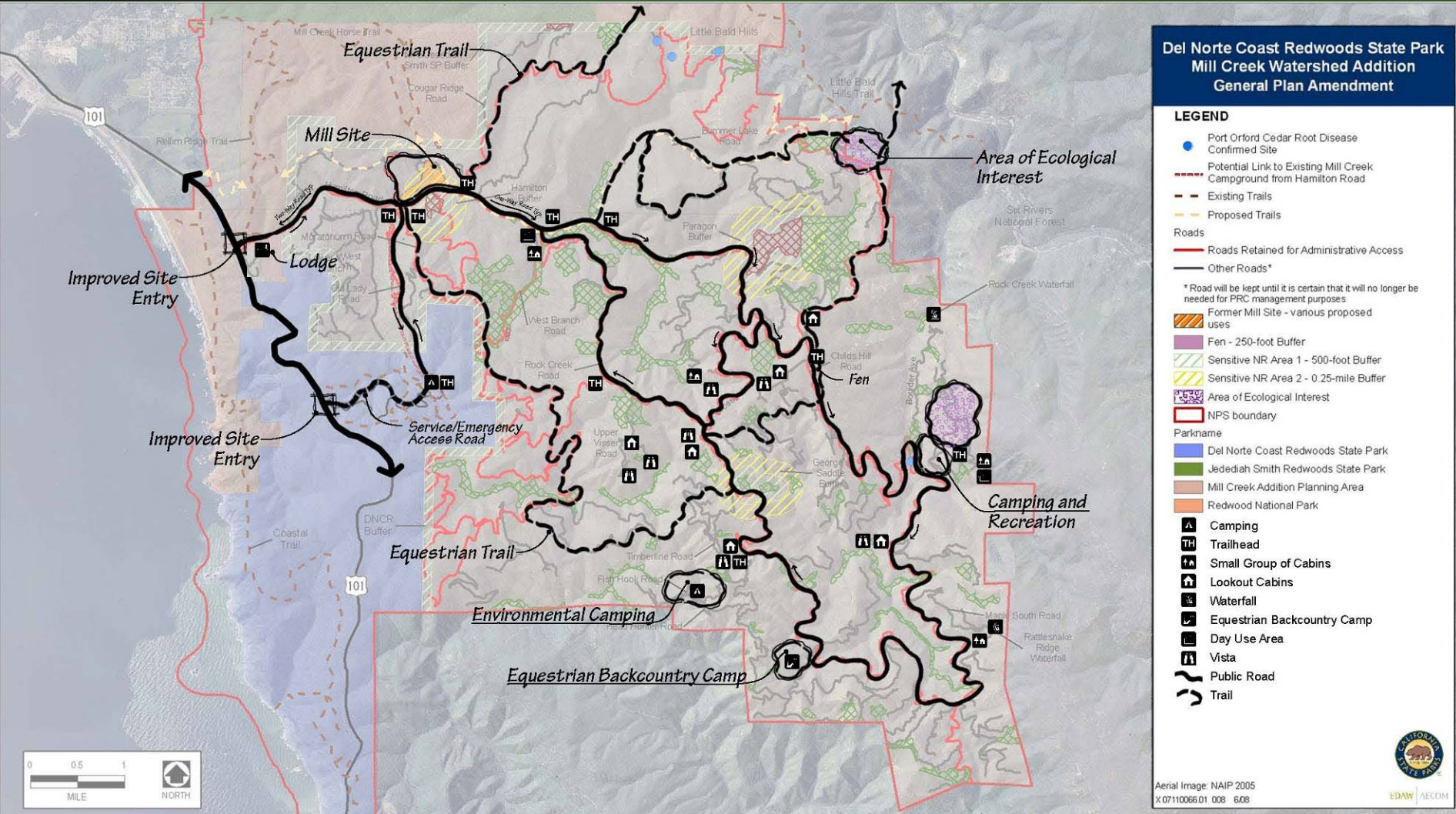
Low level Access and Development



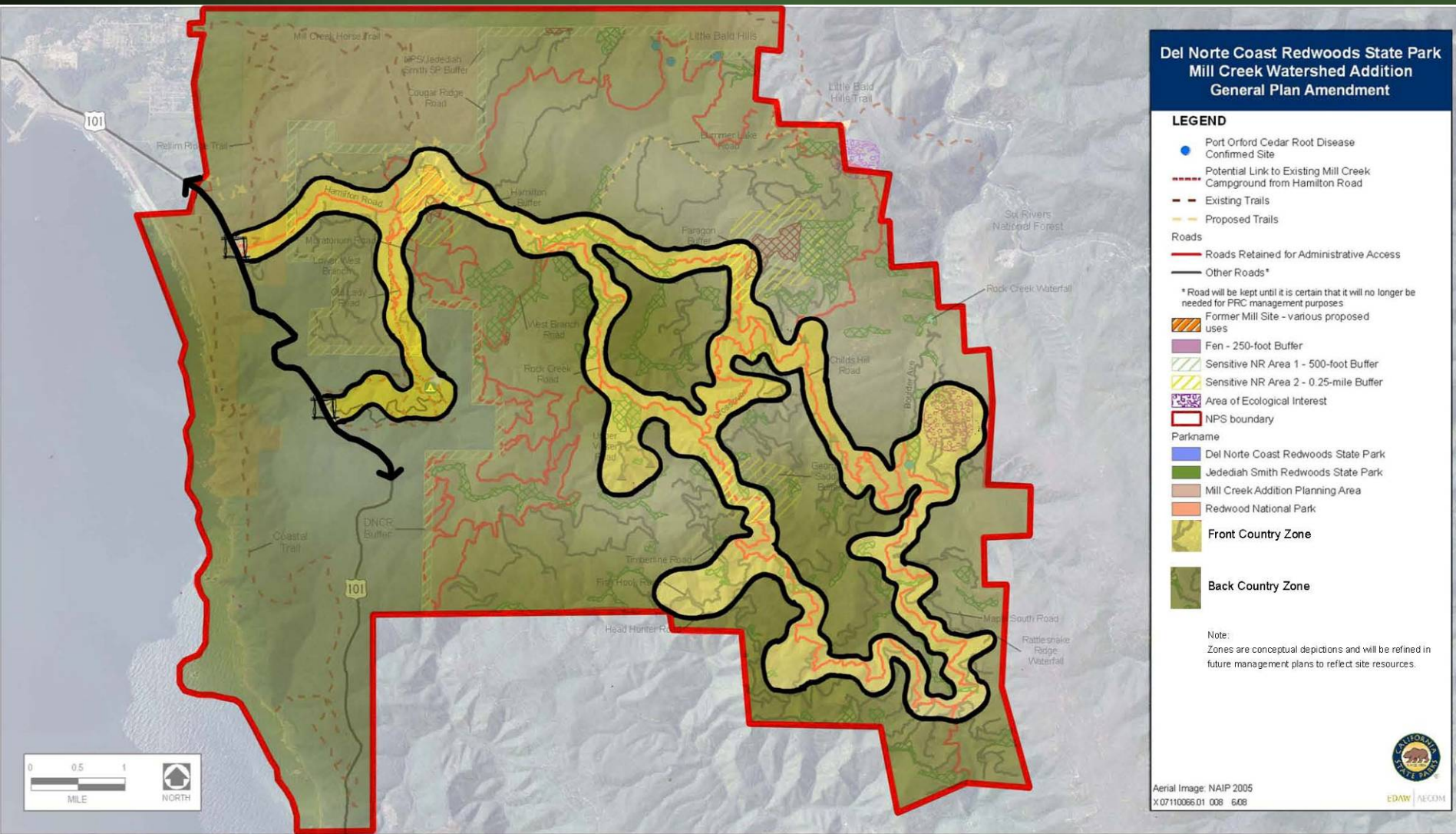
Alternative 2 – Medium Level Access and Development



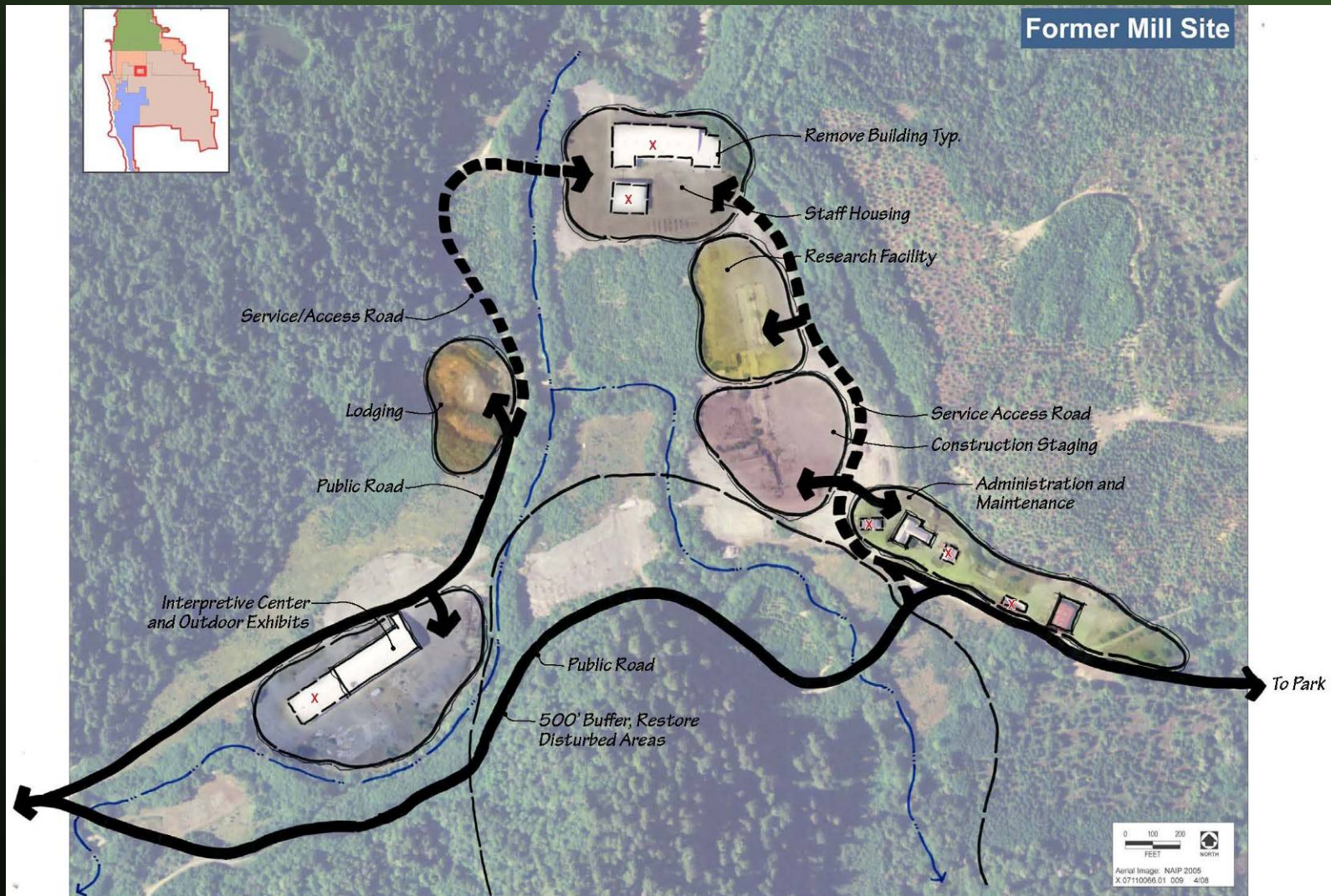
Alternative 3 – High Level Access and Development



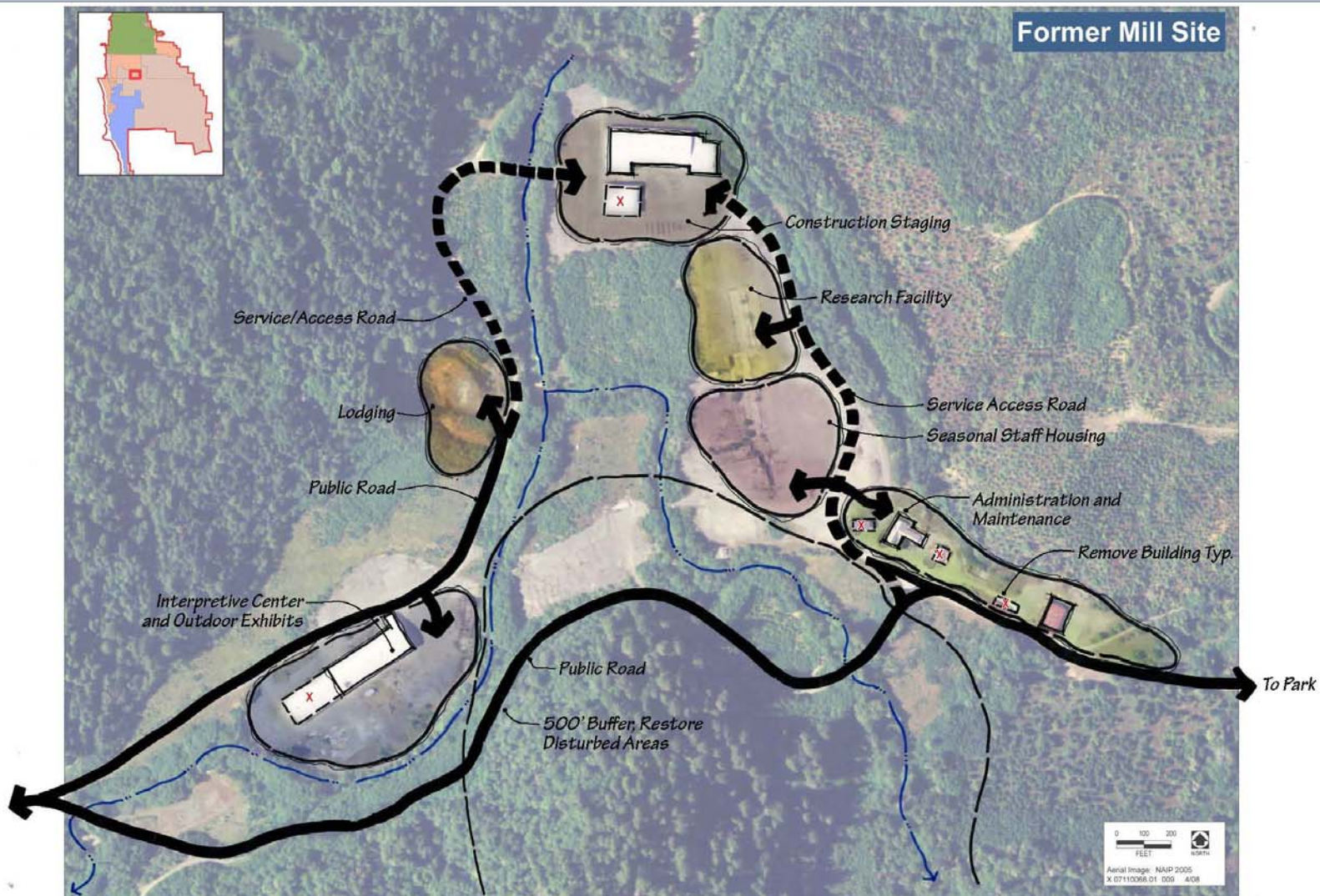
Conceptual Management Zones



Mill Site Reuse Concept A



Mill Site Reuse Concept B



Today's Meeting Next Steps

- Visit Alternatives Stations + Informal Questions
- Workgroups to Discuss Alternatives
- Workgroups Summarized Presentations
- Closing Statements
- Adjourn

Thank you for attending today's workshop and for participating in the planning process!

Thank you to the Elk Valley Rancheria for hosting us!



EDAW | AECOM