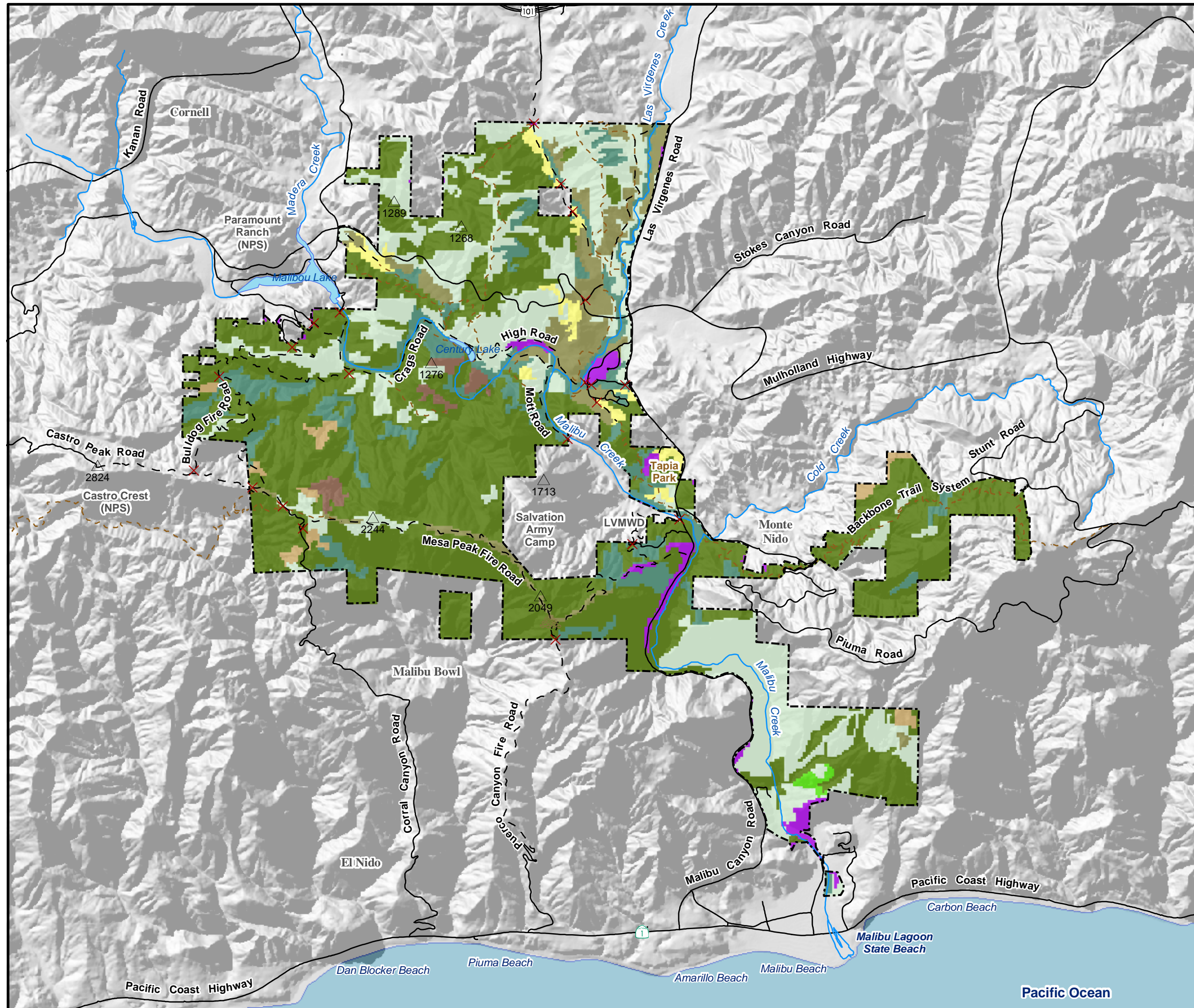


Malibu Creek State Park

**FIGURE 6
VEGETATION**



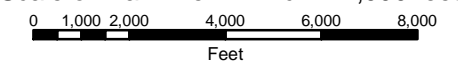
Basemap Features

- ~ Paved Roads
- Unpaved Roads
- Trails
- ✕ Locked Gates
- ~ Rivers
- ~ Lakes
- ~ Landslide
- △ Mountains
- ⊠ MCSP Boundary

Vegetation Classes

- Coast Live Oak Woodland
- Coastal Sage Scrub
- Coastal Sage Scrub/Chaparral Transition
- Chamise Chaparral
- Northern Mixed Chaparral
- Coastal Strand
- Non-native Grassland/Herbaceous
- Riparian (Sycamore-Oak) Woodland
- Rock Outcrops
- Salt Marsh
- Valley Oak Savannah
- Developed Land

Scale of Main View: 1 inch = 4,000 feet



Source Data: Santa Monica Mountains National Recreation Area (SMMNRA), 2002; National Elevation Dataset (NED) Shaded Relief Imagery from United States Geological Survey (USGS), 2003.

