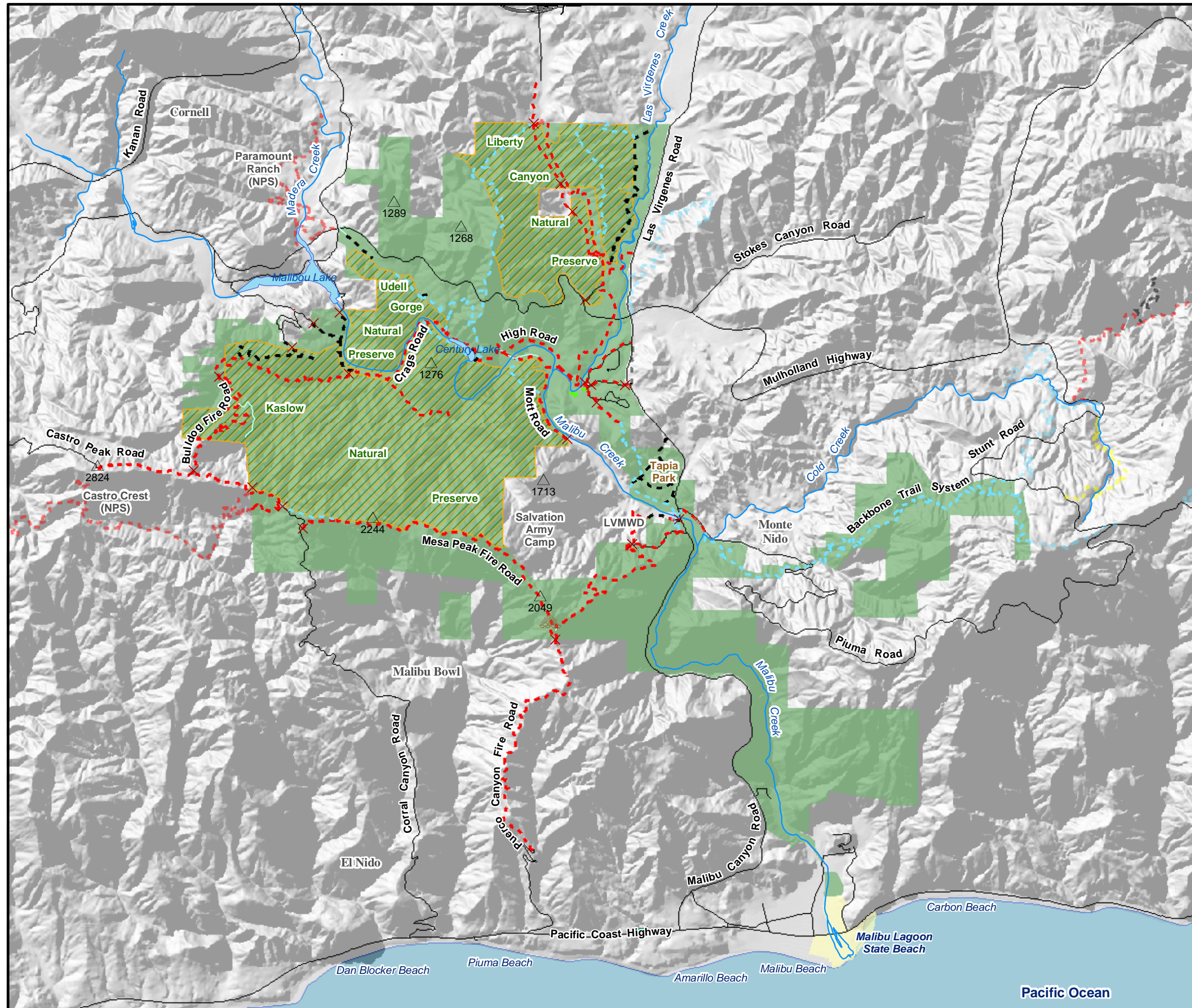


# Malibu Creek State Park

**FIGURE 5  
TRAILS AND ACCESS ROUTES**



## Basemap Features

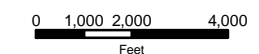
- Paved Roads
- Locked Gates
- Rivers
- Lakes
- Landslide
- Mountains

## Natural Preserves

## Trail Designations

- Hiker Only
- Hiker/Equestrian
- Multiuse
- Disabled
- Undesignated

Scale of Main View: 1 inch = 4,000 feet



Source Data: Santa Monica Mountains National Recreation Area (SMMNRA), 2002; National Elevation Dataset (NED) Shaded Relief Imagery from United States Geological Survey (USGS), 2003.

