

Park Trails

- Support regional trail objectives and encourage appropriate connections between Castle Rock State Park and adjacent county parks and Midpeninsula Regional Open Space Preserves.
- Prepare a Unit Trails Plan to determine specific trail routes and appropriate uses.

Roadside Parking

- Upgrade roadside parking lots along Hwy. 9 for day use parking and trail access between Saratoga Gap and Waterman Gap (Red Mtn., Oil Creek, Sempervirens Pt. and Waterman Gap).
- Evaluate other roadside parking for possible removal or continued use.

Sempervirens Point

- Improved vista point parking (25 cars) with restroom and interpretive panels.

Tin Can Ranch

- Utilize existing site and facilities for environmental living program. May continue use for employee residence and/or administrative and maintenance functions.

Trail Camps

- (A) Restore primitive nature of Castle Rock Trail Camp. Remove existing buildings (except shelter) and a few campsites to reduce resource impacts.
- (B) Consider Hall's Rest Stop site for potential trail camp (location is near the intersection of the Saratoga Toll Road and Beekhuis Road Trail).
- (C) Consider Craig Springs Creek site for potential trail camp (locate outside riparian corridor).
- (D) Maintain Waterman Gap Trail Camp (6 existing campsites) by agreement with SLVWD.

San Lorenzo Valley Water District (SLVWD)

Coordinate with SLVWD to implement effective watershed management policies, programs, and land use agreements to protect significant natural and cultural resources, and to provide public access and appropriate recreational use.

Saratoga Gap

- Consider acquisition, or property transfer of Caltrans property for possible state park administrative and maintenance operations.
 - Coordinate with other agencies to determine the feasibility of a regional multi-agency visitor center (at Saratoga Gap or another site in the Santa Cruz Mountains).
- Proposals for the Gap will require acquisition of Caltrans property, as well as site & building evaluations. A multi-agency visitor center will require agency coordination, environmental analysis, and public review.

Loghry Woods

- Upgrade trails to meet regional trail objectives
- Protect & Interpret cultural & natural features
- Control exotic plants

Partridge Farm

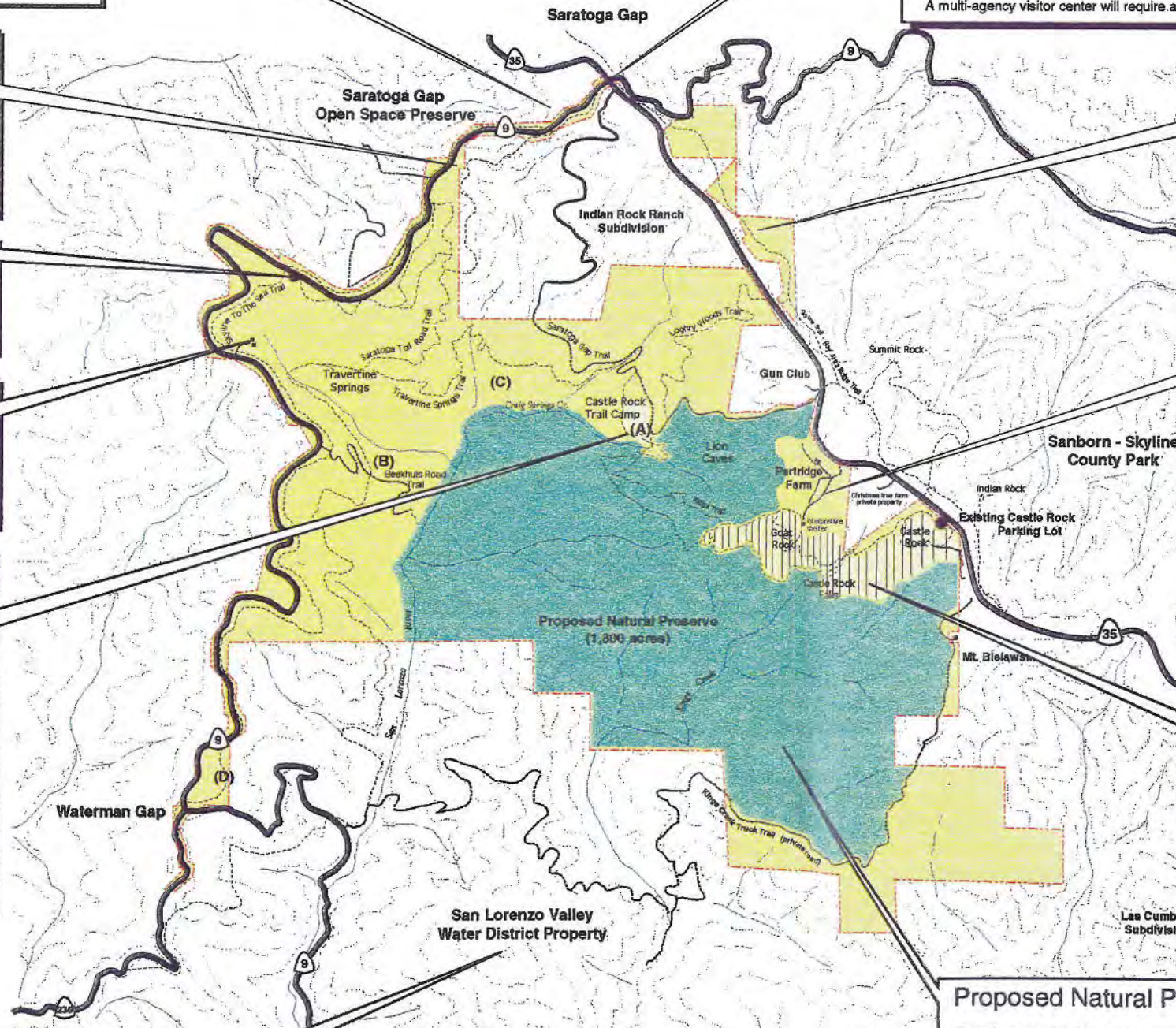
- Develop new entrance and improve vehicle access for primary visitor contact, orientation, and interpretation.
 - Establish park headquarters office
 - Upgrade interpretive facilities and programs
 - Preserve historic farm house for adaptive use
 - Establish day use parking at Partridge, through the relocation of cars from the main Castle Rock parking lot and closure of roadside parking along Highway 35. (Day use parking should not exceed existing capacity)
 - Develop 20 walk-in campsites with parking for 30 cars
 - Provide restrooms and other site amenities.
 - Reforest (with natives) open space areas surrounding public use facilities.
- Resource management and visitor impact assessment programs will guide site specific planning, development, and use.

Castle Rock Ridge RMZ

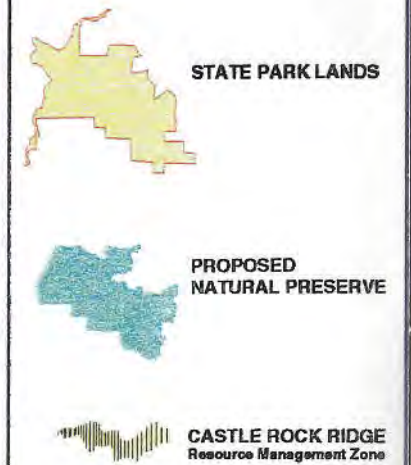
- Prepare a Climbing Management Plan for guiding low-impact rock climbing activities outside the proposed natural preserve.
- Improve access trails, signing, and interpretation
- Conduct further resource investigations and studies for managing visitor impacts in zones of moderate and high use intensity.
- Preserve the black oak woodland and rehabilitate impacted areas.

Proposed Natural Preserve

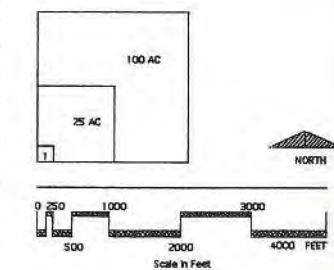
- Classify approximately 1,800 acres of this natural area as a Natural Preserve. This will establish special protection for sensitive plant communities, wildlife habitats and geologic features, and provide for the occurrences of natural processes.
- Limit the recreational activity to trails and interpretive facilities required for the visitor's visual and sensory enjoyment of the resources.



MAP KEY



LEGEND



LAND USE & FACILITY GUIDELINES

DESIGNED
D. Keck

DATE

DRAWN
D. Keck

CHECKED
D. Keck

REVISED

DEPARTMENT OF PARKS AND RECREATION

RESOURCES AGENCY OF CALIFORNIA

DATE

APPROVED

CASTLE ROCK STATE PARK

LAND USE & FACILITY GUIDELINES

GENERAL PLAN

DRAWING NO.
27435.7

SHEET NO.
8

8 of 8