

BIG BASIN REDWOODS STATE PARK



A Century of Resource Preservation and Public Enjoyment

General Plan Newsletter #1

September 2001

Planning process will define how we can best preserve and enjoy Big Basin's unique values and resources

The California Department of Parks and Recreation is beginning an 18-month planning process to develop a long-range general plan for Big Basin Redwoods State Park. General plans are broad policy documents that direct park management and future development. Big Basin Redwoods State Park (which we'll simply call "Big Basin") does not have a general plan, though much planning has been done for this park since its founding in 1902.

The Big Basin General Plan will guide the park's development, management, and public use. Specifically, it will:

- Identify significant natural, cultural, aesthetic, and recreational values and resources
- Determine land use, park development, and visitor activities that are appropriate and compatible with the park and surrounding areas
- Establish guidelines for operations; protection, preservation, and interpretation of resources; and development of facilities
- Determine the significant environmental effects of land uses and visitor activities and possible mitigations

Attend the Planning Workshop!

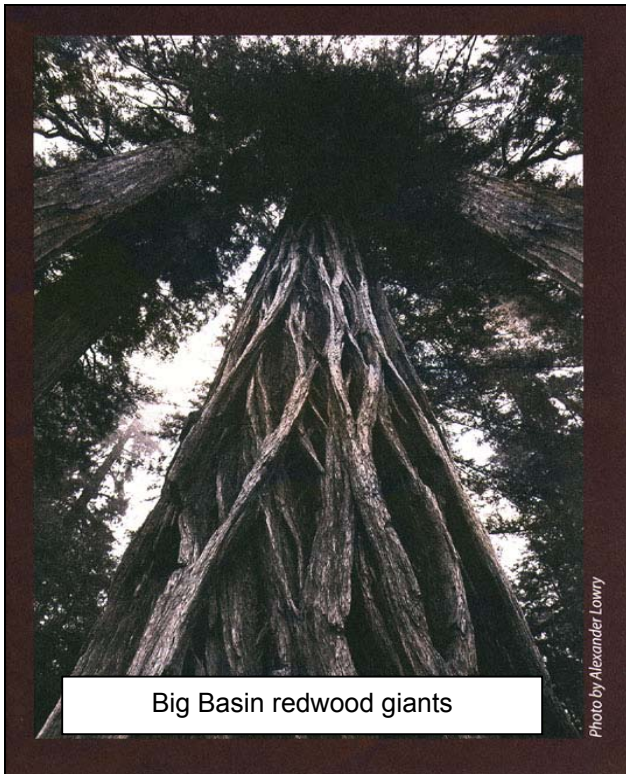
Please join us in planning the future of Big Basin Redwoods State Park. Our first workshop will be held at two locations for your convenience:

September 26 7-9:30 p.m.
Boulder Creek Elementary School
400 W. Lomond St., Boulder Creek
&
September 27 7-9:30 p.m.
Fisher Middle School,
1700 Roberts Rd., Los Gatos

The **Workshop Agenda** includes:

- Orientation to planning goals and process
- Review of *Big Basin Redwoods State Park Resource Inventory*
- Public comment on Big Basin planning issues and concerns

Due to the widespread public interest in this park, there will be many opportunities for public input in the planning process. At this first workshop we need your help in identifying major issues and concerns, such as: what recreation opportunities are desired; what facilities are needed; what lands require special protection; and which natural, historical, and cultural values should be enhanced or interpreted.



Big Basin redwood giants

Photo by Alexander Lowry

The oldest California State Park

Big Basin is California's oldest State Park, established in 1902. Home to the largest contiguous stand of ancient coast redwoods south of San Francisco, the park consists of over 18,000 acres of old growth and recovering redwood forest, with mixed conifer, oaks, chaparral, and riparian habitats. Elevations in the park vary from sea level to over 2,000 feet. The park has over 80 miles of trails. Some of these trails link Big Basin to Castle Rock State Park and the eastern reaches of the Santa Cruz range. The Skyline to the Sea Trail threads its way through the park along Waddell Creek to the beach and adjacent Theodore J. Hoover Natural Preserve, a freshwater marsh. The park contains the Waddell Creek State Wilderness and has a number of waterfalls, a wide variety of environments, and many animals and birds. Big Basin's rich and varied cultural history spans thousands of years and includes pre-historic Native American sites, homesteading and logging sites, and many 1930s Civilian Conservation Corps park improvements. Big Basin is located 25 miles northwest of Santa Cruz and 65 miles south of San Francisco.

The Resource Inventory

In order to guide general plan decisions and proposals to preserve, interpret, manage, and develop Big Basin's resources, we must first prepare an adequate inventory of the park's natural, cultural, historic, and recreational resources. Accordingly, State Park planning staff is developing the *Big Basin Redwoods State Park Resource Inventory*. Recognizing that an inventory of such a large and diverse park is never finished, we envision this inventory to be a dynamic "work-in-progress" that will be updated with new information during and beyond this general planning process. Part of Workshop #1 will be used to present this initial inventory and receive public comment on it. We are particularly interested in hearing your suggestions on information sources we may not know about. The preliminary resource inventory will be available on the State Park's web site beginning in September 2001.

Though the focus of this planning process is on Big Basin, to be effective the general plan must address important surrounding regional influences. The general plan team is working with other public agencies, trusts, adjacent property owners, and groups and individuals to integrate our planning with regional concerns, efforts, trends, and opportunities. The resource inventory includes regional influences on natural and cultural resources and recreational opportunities.



Park Ecologist studies the redwood forest

The Public Input Process

➤ **Workshop #1 (September 2001): Orientation, Review Resource Inventory, Issues and Concerns**

- Workshop #2 (early 2002): Present and Discuss Alternatives
- Workshop #3 (early summer 2002): Present and Discuss Preliminary Planning Document
- CEQA Public Review/comment on Preliminary Planning Document (fall 2002)
- Park Commission considers approving preliminary plan as final document (early 2003)

Presenting comments at the workshop

Workshop #1 will be dedicated to hearing your ideas and concerns about preserving and enjoying the values and resources of Big Basin and to receiving your comments on the *Resources Inventory*. If you plan on speaking, please register at the workshop reception table when you arrive. To ensure that there is enough time for all ideas to be expressed we encourage organizations to select a single spokesperson.

State Parks Mission Statement

The Mission of the California Department of Parks and Recreation is to provide for the health, inspiration, and education of the people of California by helping to preserve the state's extraordinary biological diversity, protecting its most valued natural and cultural resources, and creating opportunities for high-quality outdoor recreation.

We want to hear from you!

If you are not currently on our mailing list, and would like to receive the newsletter and notice about future workshops, or if you wish to send written comments, please contact us at this address:

CALIFORNIA STATE PARKS
Robin Ettinger, Northern Service Center
P.O. Box 942896
Sacramento, CA 94296-0001

Telephone: (916) 445-8905

For park information, please call (831) 338-8860.

For more information about Big Basin Redwoods State Park and other State Park units visit: www.parks.ca.gov

See Web site for Planning Information

To review the *Big Basin Redwoods State Park Resource Inventory* (available mid-September), access the Big Basin Redwoods State Park Web site at www.parks.ca.gov and:

- 1) click on "Find A Park"
- 2) select "Big Basin Redwoods"
- 3) click "go"
- 4) scroll down and click on "General Plan Information"



Big Basin Redwoods General Plan



P. O. Box 942896

Sacramento, CA 94296-0001

**Attend the September 26 or 27
Planning Workshop!**

