

SADDLE MOUNTAIN / HIGHWAY 236 GOALS

Saddle Mountain

- Management intent is to establish a new park welcome center for primary visitor contact, park orientation and campground registration.
- Develop multi-use trail connections between Saddle Mountain, Little Basin, and the HQ area. Consider provisions for equestrian trailhead parking and staging area.
- Establish a park & ride shuttle system and metro bus stop, at Saddle Mountain. Develop parking and support facilities to accommodate visitors, park concessions and administrative needs.
- Protect and interpret natural and cultural resource features. Establish adequate vegetative screening and buffers between park facilities and adjacent land uses.

Highway 236

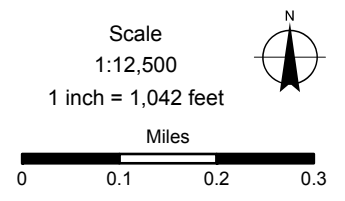
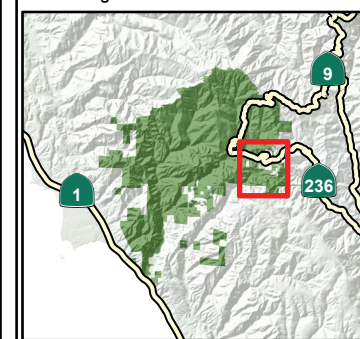
- Explore State Scenic Highway and National Scenic Byway status for Highway 236 within the park boundaries.
- Develop trailhead parking at locations along Hwy 236 at China Grade Road and south of Waterman Gap.
- Coordinate with Caltrans to improve signage at Waterman Gap to redirect park visitors to south entrance at Saddle Mountain.

BIG BASIN REDWOODS STATE PARK DRAFT GENERAL PLAN PREFERRED ALTERNATIVE SADDLE MOUNTAIN & HWY 236

LEGEND

- Accessible Feature
- Campground
-
- Stream, Perennial
- Stream, Intermittent
- Lake, Pond, Reservoir
- Hiking Trail
- Horses Allowed
- Unpaved Roads
Open to hike/bike/horse
- Paved Roads
- State Highway
- Saddle Mountain Cabins

Map Location, showing Big Basin Redwoods SP



NOTES:
Parcel boundaries are approximate and should not be considered legal descriptions. Maps are intended for study purposes only.

PLANNING DIVISION

GENERAL PLAN SECTION

Date 10/06/11
Sources:
Calif. Dept. of Parks & Recreation

Figure 19

