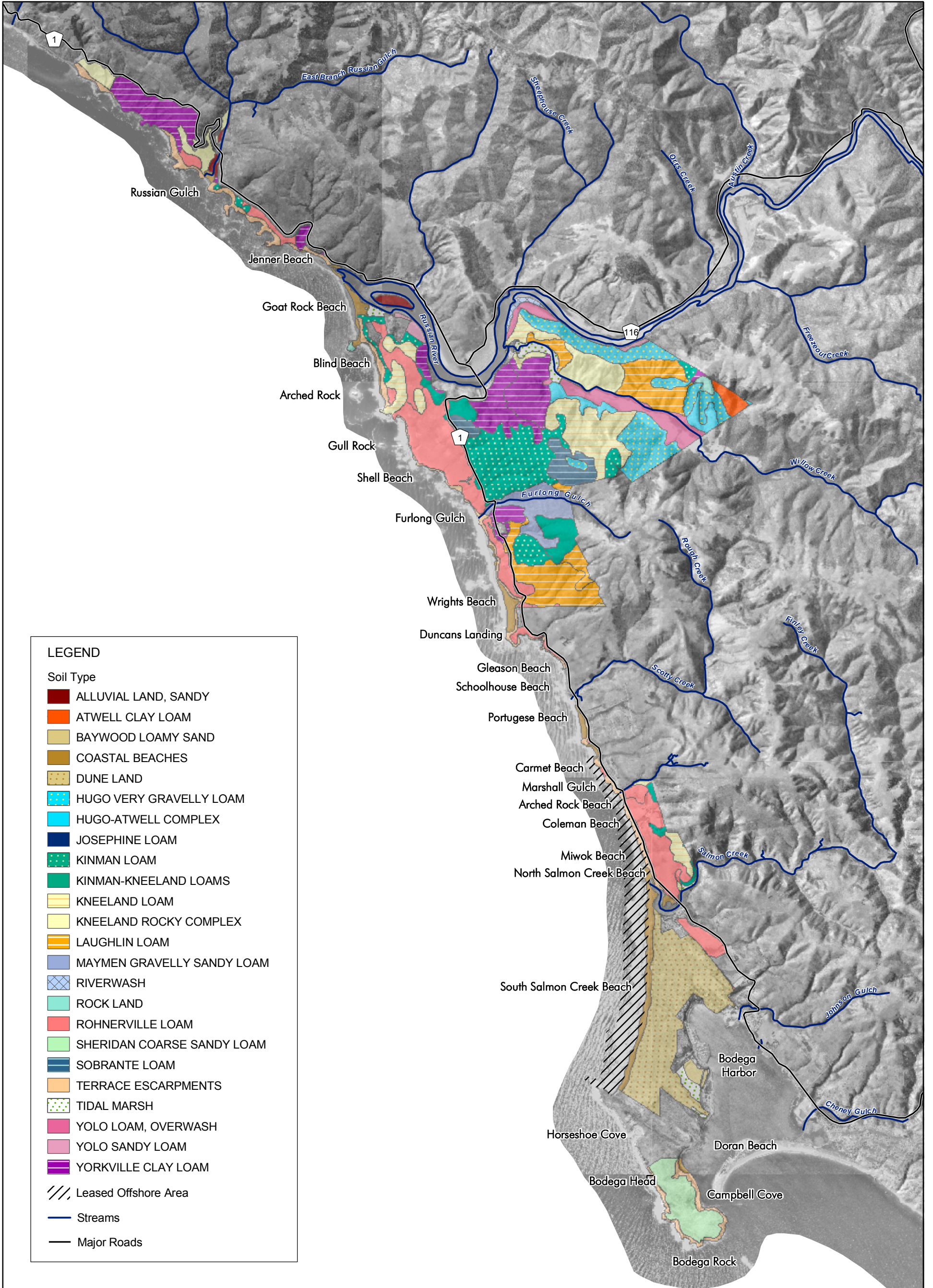


APPENDIX A. SOIL TYPES

Source: Sonoma Coast State Beach Preliminary
General Plan & Draft Environmental Impact
Report (DPR, 2006)



LEGEND

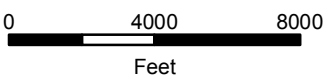
Soil Type

- ALLUVIAL LAND, SANDY
- ATWELL CLAY LOAM
- BAYWOOD LOAMY SAND
- COASTAL BEACHES
- DUNE LAND
- HUGO VERY GRAVELLY LOAM
- HUGO-ATWELL COMPLEX
- JOSEPHINE LOAM
- KINMAN LOAM
- KINMAN-KNEELAND LOAMS
- KNEELAND LOAM
- KNEELAND ROCKY COMPLEX
- LAUGHLIN LOAM
- MAYMEN GRAVELLY SANDY LOAM
- RIVERWASH
- ROCK LAND
- ROHNERVILLE LOAM
- SHERIDAN COARSE SANDY LOAM
- SOBRANTE LOAM
- TERRACE ESCARPMENTS
- TIDAL MARSH
- YOLO LOAM, OVERWASH
- YOLO SANDY LOAM
- YORKVILLE CLAY LOAM
- Leased Offshore Area
- Streams
- Major Roads

Source: USDA 2003



1 inch = 1 mile



Sonoma Coast State Beach

Dec. 9, 2003

EDAW

Exhibit 2-4 Soil Types