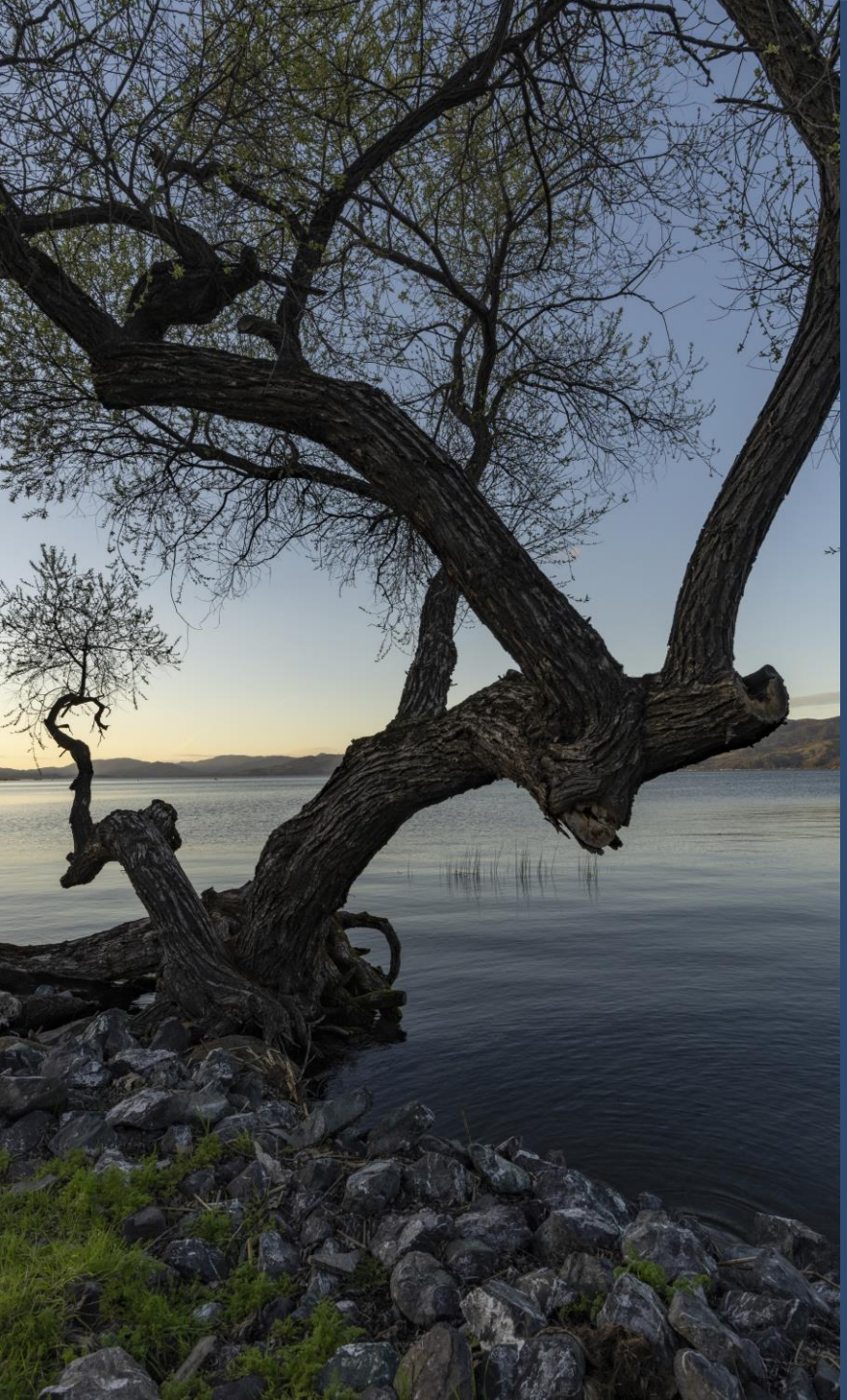




STAKEHOLDER MEETING #1

CLEAR LAKE STATE PARK GENERAL PLAN





Team Organization & Roles

- California State Parks Team
 - Headquarters Staff
 - Senior Park and Recreation Specialist: Katie Metraux
 - Deputy Director, Planning: Alex Stehl
 - Deputy Planning Chief: James Newland
 - Associate Park and Recreation Specialist: David Block
 - Park and Recreation Specialist: Jason Finley
 - Northern Buttes District Staff
 - District Superintendent: Matt Teague
 - District Services Manager: Jared Zucker
- Consulting Team (Ascent)
 - Principal: Curtis Alling
 - Project Director: Adam Lewandowski
 - Project Manager: Kari Zajac
 - Park and Recreation Planner: Lindsay Kageyama
 - Engagement Specialist: Luis Montes
 - Environmental Planner: Nicole Greenfield
 - Senior Natural Resources Planner: Jessie Quinn

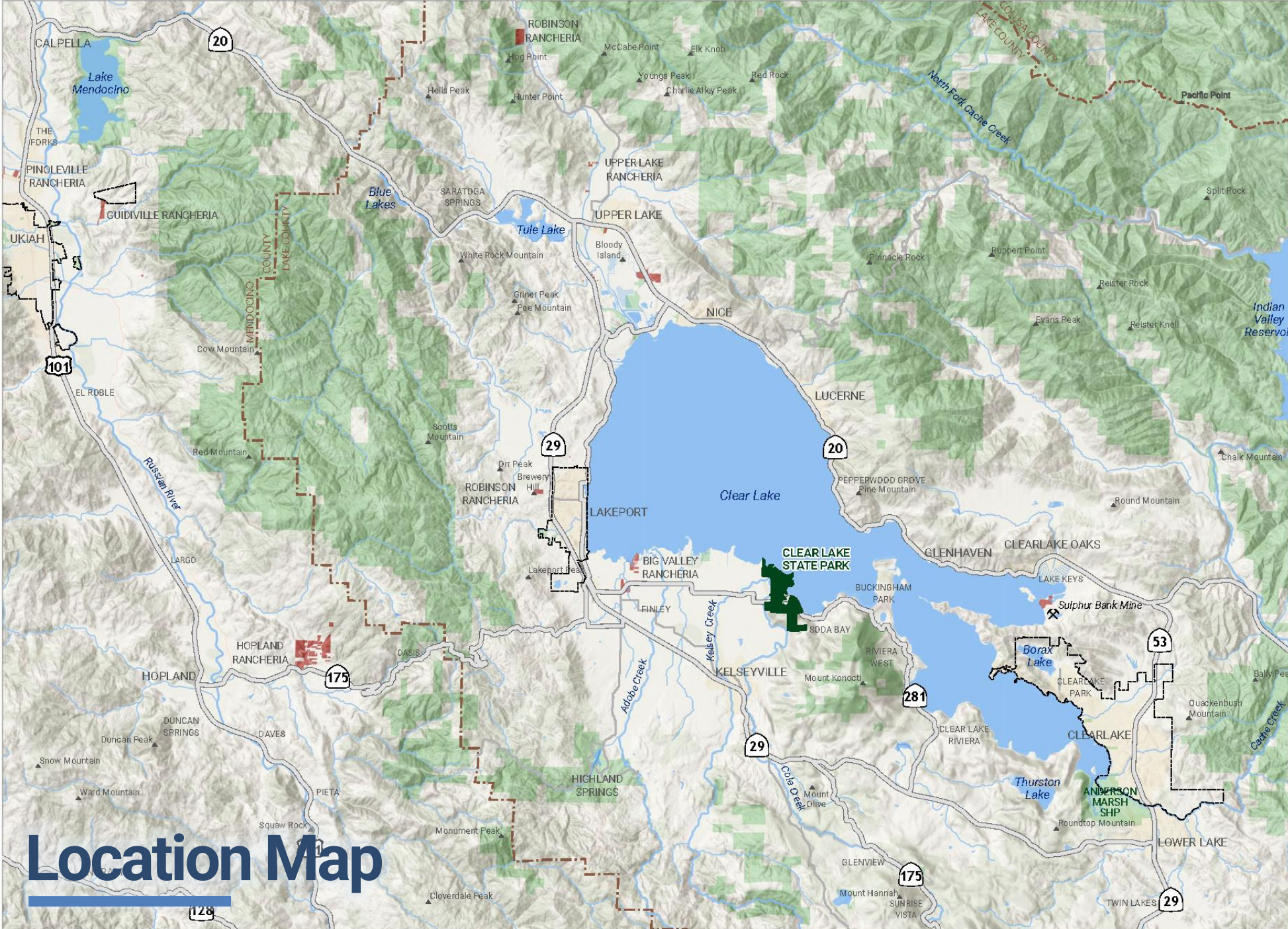
Agenda

- 1 Park Overview
- 2 General Plan Overview & Purpose
- 3 Stakeholder Engagement
- 4 Planning Process & Timeline
- 5 Draft Unit Purpose & Vision
- 6 Group Discussion
- 7 Final Remarks



1

Park Overview



Location Map

CLEAR LAKE STATE PARK

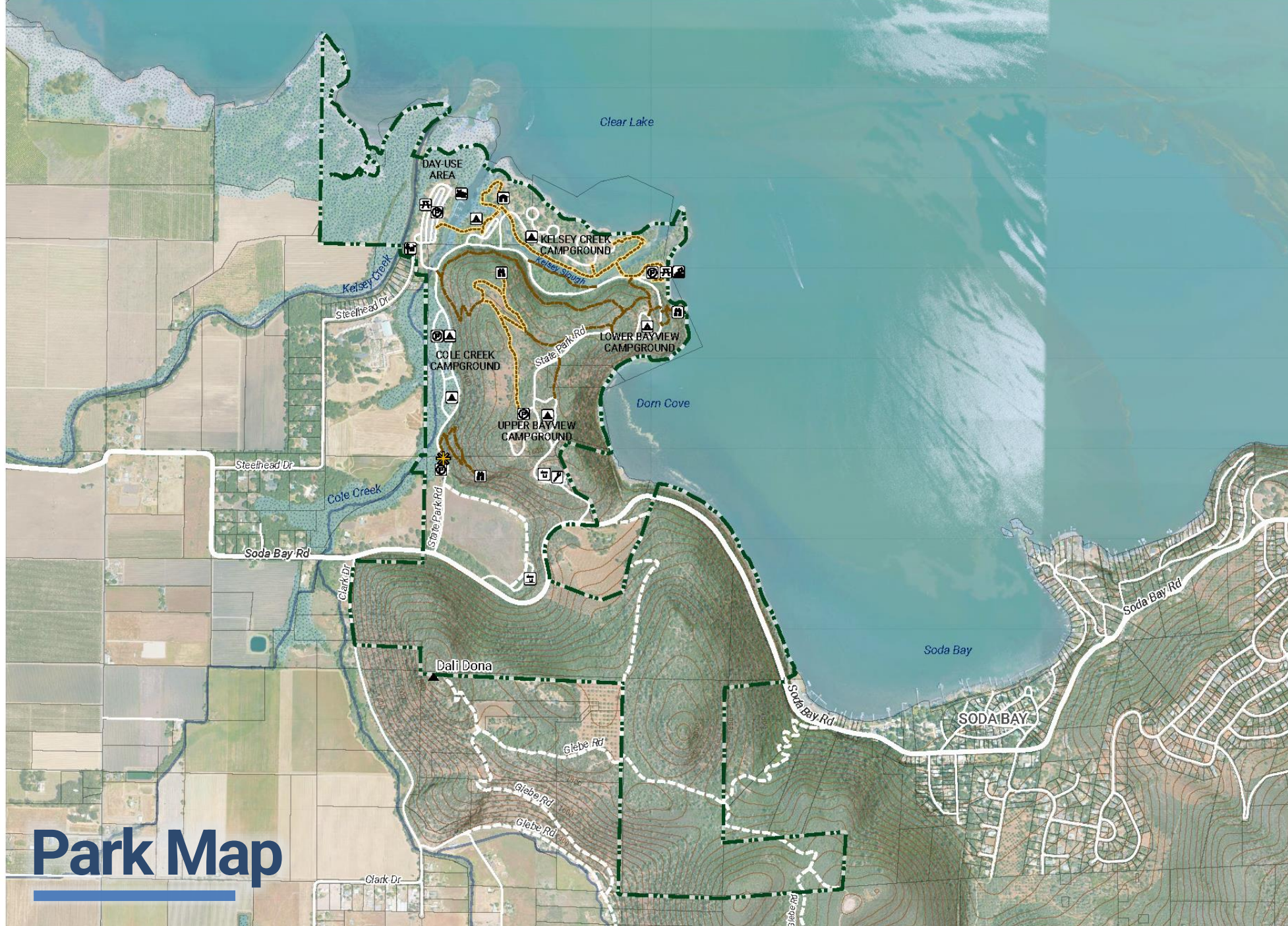
- Clear Lake State Park
- City Limits
- Public Land
- Tribal
- Sulphur Bank Mine

0
1.5
3
MILES

Esri World Hillshade/Ocean Base
20211027.03 GIS 023

CLEAR LAKE

STATE PARK



- Park Boundary
- Park Entrance and Headquarters
- Visitor Center
- Overlook
- Campground
- Cabins
- Picnic Area
- Parking
- Boat Launch
- Swimming Beach
- Employee Housing
- Maintenance Area
- Unpaved Multi-use Trail
- Paved Accessible Trail
- Major Road
- Paved Road
- Unpaved Road
- 40-foot Contour
- Waterways
- Wetlands
- Parcels

Park Map

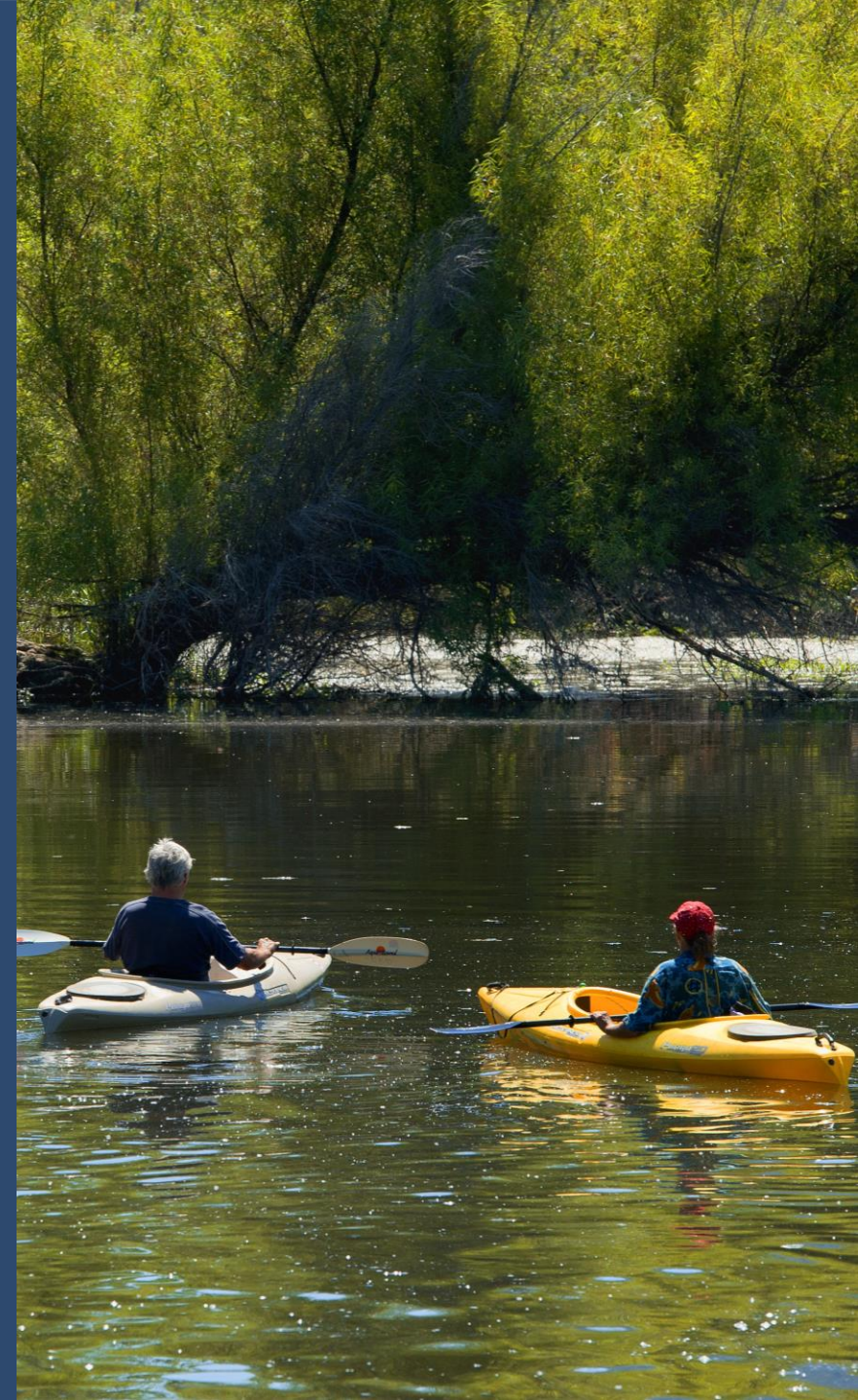


Esri World Hillshade/NAIP Imagery
20210027.03 GIS 027



Park Overview

- Nestled on the south shore of Clear Lake on the slopes of Mount Konocti
 - Dynamic natural resources, including diverse vegetation communities
 - Abundant cultural resources
 - ~ 590 acres
 - 3.1 miles of shoreline
 - ~ 89,000 visitors/year
- Recreation activities:
 - Boating/paddling
 - Scuba Diving/Snorkeling
 - Fishing
 - Swimming/beachgoing
 - Hiking
 - Camping
 - Picnicking
 - Education and interpretation
 - Special events



slido



**Join at slido.com
#5493715**

① Start presenting to display the joining instructions on this slide.

slido



What recreational opportunities or activities would you most like to see expanded or introduced at CLSP to enhance visitor experiences?

ⓘ Start presenting to display the poll results on this slide.

Park Facilities

- 4 campgrounds (148 campsites total)
- 2 group campsites
- 8 cabins
- 2 picnic areas
- Visitor center
- Educational pavilion
- Marina and boat launch
- Concession building (currently vacant)
- Swimming beach
- 3.7 miles of hiking trails
- Accessible facilities
- Employee housing
- Park maintenance and storage facilities
- Park and sector offices





Park Facilities



slido

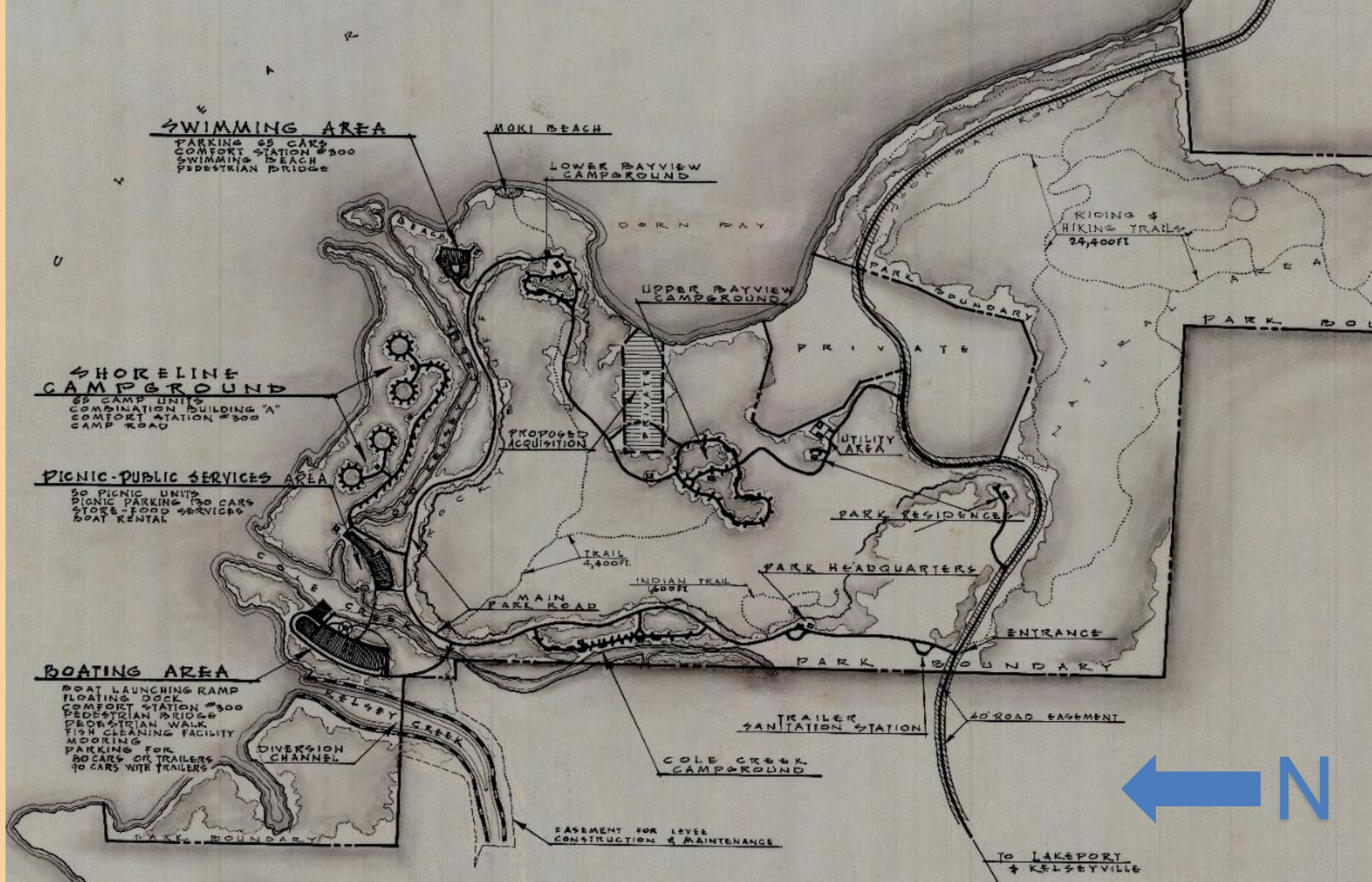


What features or facilities within CLSP are essential to enhance or expand in the future?

ⓘ Start presenting to display the poll results on this slide.

Park Acquisition and Planning History





2

General Plan Overview & Purpose



What is a State Park General Plan?

- Policy-level long-range planning tool
- Primary managing document for the park
- Visionary document that sets the goals and guidelines for current and future park facilities
- Opportunity for stakeholders, the public and California Native American Tribes to provide input



General Plan Elements



Existing Conditions



Issues & Analysis



Plan Alternatives & Selection of Preferred Alternative



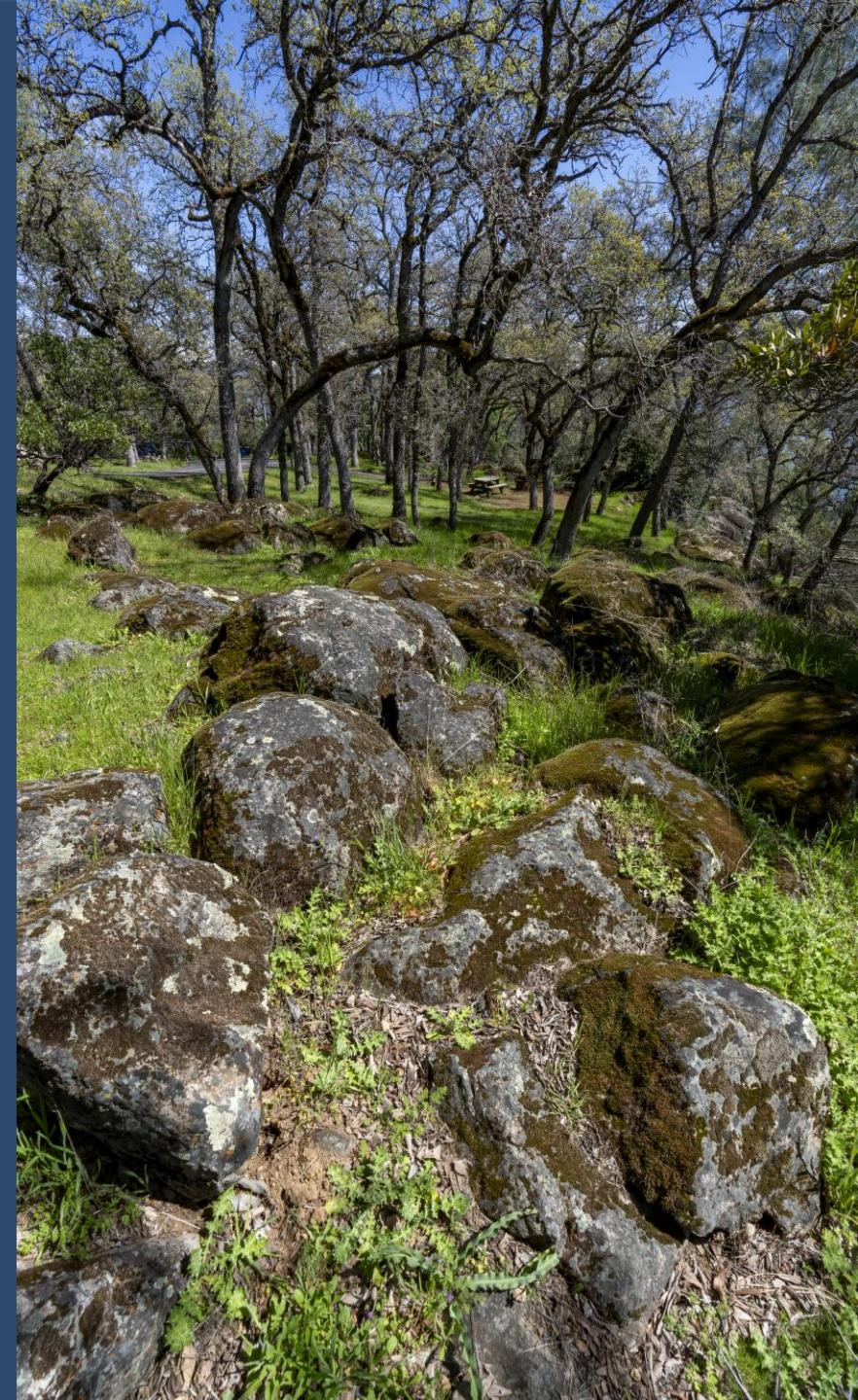
Unit Vision, Goals, & Guidelines



Environmental Analysis

Importance of General Plan for CLSP

- Update park planning to meet current SP general plan standards
- Identify and align park management priorities
- Proximity of park to underserved residents
- Environmental issues in the Clear Lake region
- Enables and emphasizes future resource management projects
- Documents past and provides a foundation for future management
- Promotes proactive management





General Plan Purpose

- Provide long-term guidance on operations, visitor uses, resource management, park improvements and facility development
- Establish a comprehensive, durable vision for the park
- Enhance visitor experience
- Create an opportunity to streamline future CEQA
- Incorporate community input and promote buy-in

3

Stakeholder Engagement

Stakeholder Engagement Objectives

- Ensure General Plan goals and guidelines are informed by stakeholder values
- Assist CSP in identifying concurrent and related initiatives
- Identify opportunities to enhance the park
- Identify constraints that might hinder the achievement of General Plan vision
- Strengthen partnerships and leverage resources to address challenges
- Share General Plan updates and engagement opportunities across your networks





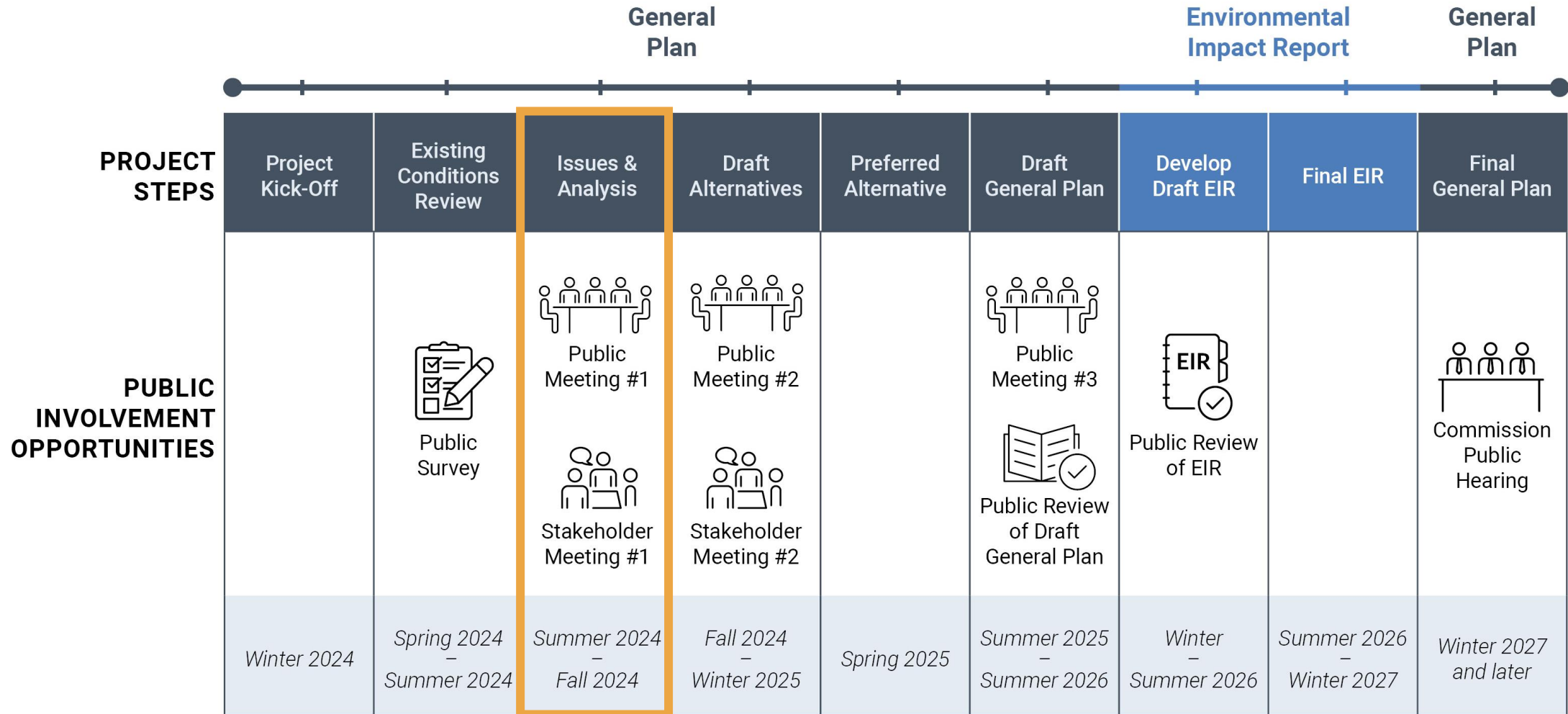
Stakeholder Participation Opportunities

- Stakeholder Meeting #1 - Issues & Opportunities
- Stakeholder Meeting #2 - Alternatives & Feedback
- Review of Draft General Plan
- Review of Draft Environmental Impact Report (EIR)

4

Planning Process & Timeline

Project Schedule



WE ARE HERE

5

Draft Unit Purpose & Vision



Unit Declaration of Purpose

- Basis for planning and management at the park
- Required by the Public Resources Code
- Describes the park's:
 - Significance to California
 - Key resources and values
 - Framework for future management and planning

slido



What core values should be integrated into the draft purpose statement for CLSP?

ⓘ Start presenting to display the poll results on this slide.

Unit Vision

- Describes the future desired condition, character, uses, and functions once the general plan goals are met
- Expresses how the park will be managed
- Describes visitor opportunities

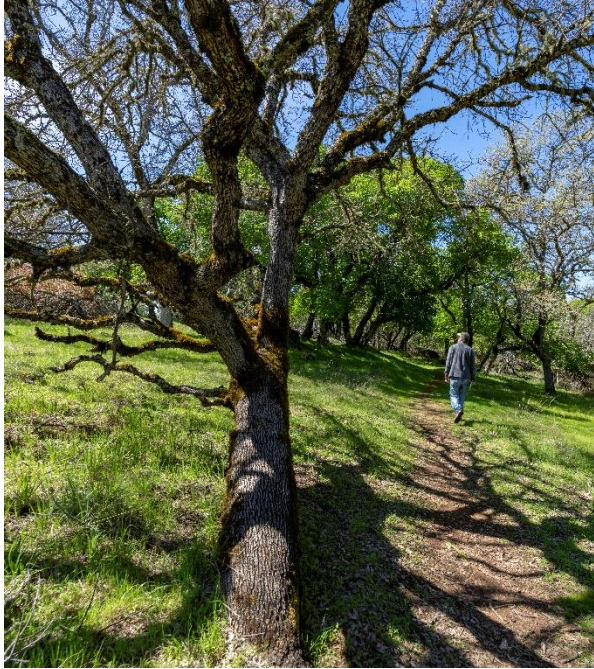
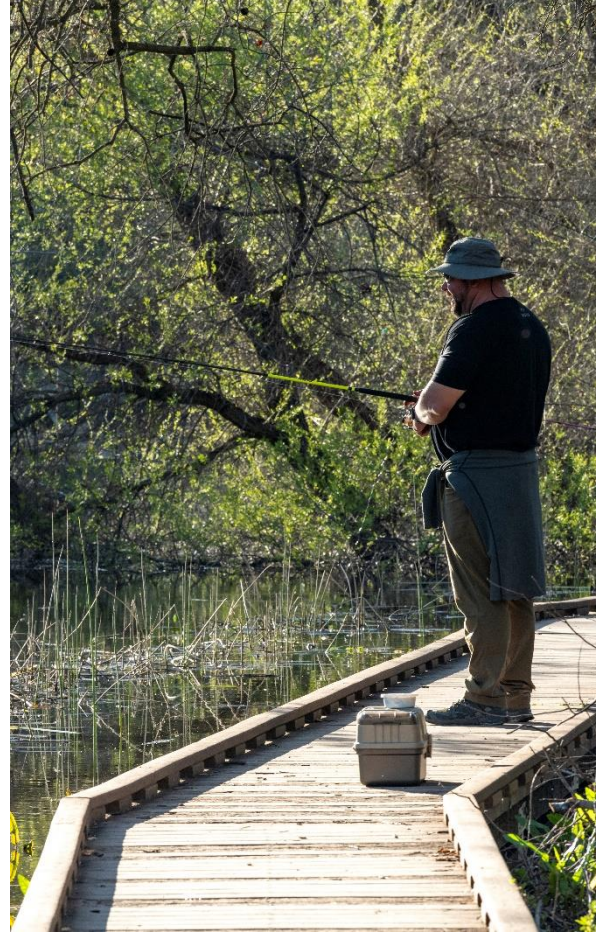


slido



**What is your vision for how CLSP should look in the future?
Consider desired conditions, uses, and features you'd like to see.**

ⓘ Start presenting to display the poll results on this slide.



Q & A



6

Group Discussion

Discussion Topics

- Park Value
 - What is the value of the park, and how can it be enhanced?
- Concurrent and Ongoing Efforts
 - What ongoing initiatives and activities near CLSP could potentially align with the park's goals?
- Challenges
 - What are the primary challenges CLSP faces? What obstacles might hinder the achievement of the general plan objectives?
- Leverage Partnerships and Resources
 - How can partnerships be strengthened and resources leveraged to effectively address challenges?




Mural Board


Discuss each prompt aimed at supporting the CLSP general planning process. We will have 50 minutes for this exercise.

<https://app.mural.co/t/ascent5806/m/ascent5806/1692720481875/fba5c8bbf9ab4decd85a4b8a1766ed7871aad385?s=ender=u664c9112f202202b676e8685>

CLEAR LAKE STATE PARK GENERAL PLAN DISCUSSION



Park Value

What is the value of the park, and what opportunities exist so it can be enhanced?



Concurrent and Ongoing Efforts

What ongoing initiatives and activities near CLSP could potentially align with the park's goals?

CLSP's use of CCC areas adjacent the park


Challenges

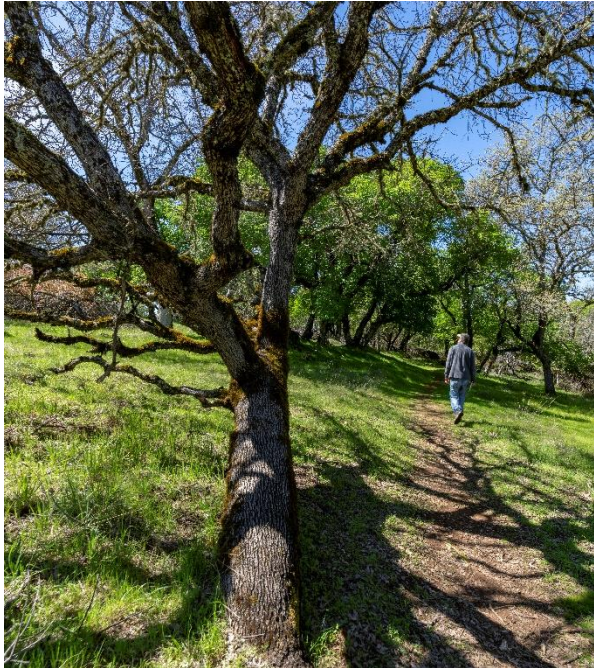
What are the primary challenges facing CLSP? What obstacles might hinder the achievement of the general plan objectives?


Leverage Partnerships and Resources

How can partnerships be strengthened, and resources leveraged to address challenges effectively?

Coordinating on regional park or land acquisitions.

Partnering on other nearby land or other natural areas.



Final Remarks



Stay Engaged

VISIT www.parks.ca.gov/clsp_gp
or scan the QR code

QUESTIONS? Contact
clearlakegp@parks.ca.gov



THANK YOU

