

CALIFORNIA INDIAN  
HERITAGE CENTER



Honoring Diversity & History  
of California Indian People

# Developing the California Indian Heritage Center

Presentation to the City Council of West Sacramento, CA  
January 12, 2011



# Core Values & Guiding Principles

## Develop Riverfront as a Regional Destination

- Public access community wide
- Public enjoyment of property before full build out
- Continuity (regional trail connections)
- Opportunity for an expanded nature area with interpretive elements

## Strong, Diverse Local Economy

- Additional community serving facilities
- Participation from community organizations

## Develop Comfortable Living

- Security – MOU between WSPD & CA State Parks
- Key constituencies and neighborhoods to advise
- Traffic & transportation – include alternatives to minimize impacts
- Manage parking impacts to neighborhood

# Our Partners

- **Native American Community - both local and statewide**
- **CIHC Core Advisors**
- **City of West Sacramento**
- **Yolo County**
- **West Sacramento Communities**
- **West Sacramento Community Advisory Group**
- **City and County of Sacramento**
- **State and Federal agencies**
- **Native American Heritage Commission**



# Telling the Story

- Education
- Exhibits
- Cultural Events
- Research
- Tribal Treasures



*"Discovery of Gold in California, No. 2", 1978  
By Harry Fonseca*

# Definition of GP and EIR

## **What is a State Park General Plan (GP)?**

- The primary management tool for a State Park; defines the purpose, vision, and long term goals and guidelines for management of the park

## **What is studied in a General Plan EIR?**

- EIR studies the proposed General Plan's effects on the environment, in accordance with State CEQA guidelines

# Public and Stakeholder Outreach

## Public Meetings in West Sacramento

- January 26 (scoping, planning process overview)
- May 27 (presentation of alternatives)
- June 10 (presentation of alternatives)
- July 28 (preferred alternative and phasing)
- January 12, 2011 City Council Meeting (present preferred alternative, draft EIR preparation)

# Public and Stakeholder Outreach

## **Focused Meetings with Interested Groups**

- COWS Chamber of Commerce
- Rotary Clubs
- Local Elected Officials

## **Neighborhood Consultations**

- The Rivers Action Group
- BBCAN

## **Project Websites and Mailing Materials**

# Public and Stakeholder Outreach

## CIHC Task Force/CIHC Foundation

- Board meetings

## CIHC Core Advisors

- 3 focused meetings

## City of West Sacramento Community Advisors

- 3 focused meetings

## Statewide Native American Community Outreach

- 3 statewide meetings
- Attendance at conferences and special events

## Interagency Meetings

- Various focused meetings with regulatory and planning agency partners
- Scoping/mailing of Notice of Preparation



# Agency Consultation

## Local Agencies

- City of West Sacramento (City Manager, Flood Control, Redevelopment, Planning, Parks)
- Yolo Natural Heritage Program

## State Agencies

- Central Valley Flood Protection Board
- Department of Fish and Game
- Department of Water Resources
- State Lands Commission
- Department of Boating and Waterways
- Department of Transportation

## Federal Agencies

- U.S. Fish and Wildlife Service
- National Marine Fisheries Service
- U.S. Army Corp of Engineers

# Major Issues Studied Pursuant to Master Agreement, Public Comment or Known Site Constraints

- Traffic, Circulation and Site Access
- Parking
- Public Safety and Security
- Design Guidelines
- Aesthetics
- Site Configuration and Constraints Due to Location

# Issues Studied Pursuant to CEQA

- Aesthetics/Scenic Resources
- Air Quality/Greenhouse Gases
- Biological Resources
- Cultural Resources
- Hazards and Hazardous Materials
- Hydrology and Water Quality
- Land Use and Planning
- Noise
- Public Services
- Transportation and Traffic
- Utilities and Service Systems
- Other CEQA Considerations

*Eliminated from detailed study: agricultural and forestry resources, mineral resources, paleontological resources, recreation*

# Transportation Study

## Components Studied

- Roadway, Transit, Bicycle, Pedestrian and Waterway

## Scenarios Studied

- Existing Conditions
- Existing Plus Project Conditions
- Cumulative Conditions

## Intersection Analysis

- 11 study intersections
- Traffic counts conducted last summer
- Cumulative forecasts developed using the City of West Sacramento's Travel Demand Model
- Used the City of West Sacramento's Impact Significance Criteria
- No significant impacts found

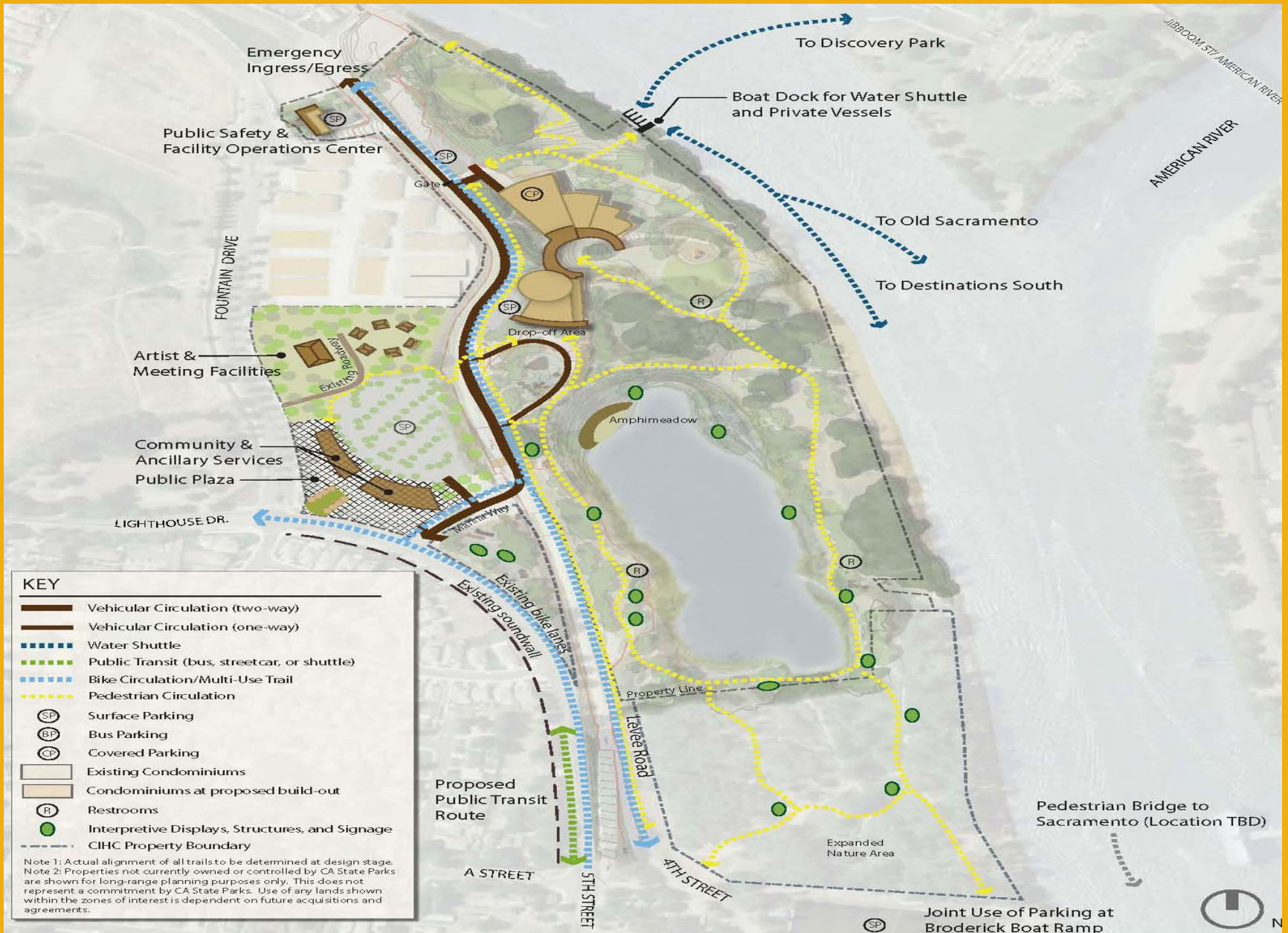
# Public Comments

- Concerns regarding traffic/parking/entry location/driving on local roads/levee
- Desire for public transportation (streetcar, bus, boat, bike, foot)
- Use of offsite parking areas
- Construction within floodplain
- Need for levee improvement/impacts on CIHC and site overall
- Public safety/patrols by rangers
- Role of adjacent parcels
- Impact on local community/landscaping etc.
- Link to the Riverwalk
- Commercial vacancies
- Light and glare from vehicles on site/on levee
- Hours of operation
- Level of visitation
- Impacts to natural habitats on site
- Aesthetics (height and look of structures, “wrapped” parking)

# Developing the Preferred Alternative

- Mission of the CIHC
- Neighborhood and Stakeholder Concerns
- Previous Planning Efforts
- Physical Site Conditions
- Feasibility of Particular Project Features
- Flood Protection Considerations
- Public Safety Considerations
- Facility Operations and Site Access Considerations
- Input from Multiple Agencies
- Direction from Mayor, Council Members and City Staff
- Direction from State Parks Policy Committee

# Preferred Alternative

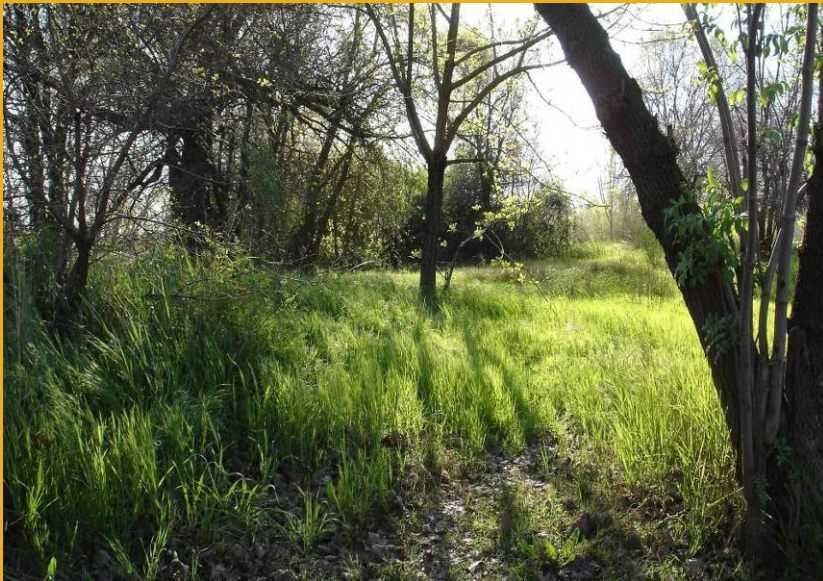


# Initial Phase 1 Grant (2011-2014) and Phase 2 Facility Development (2014-2017)

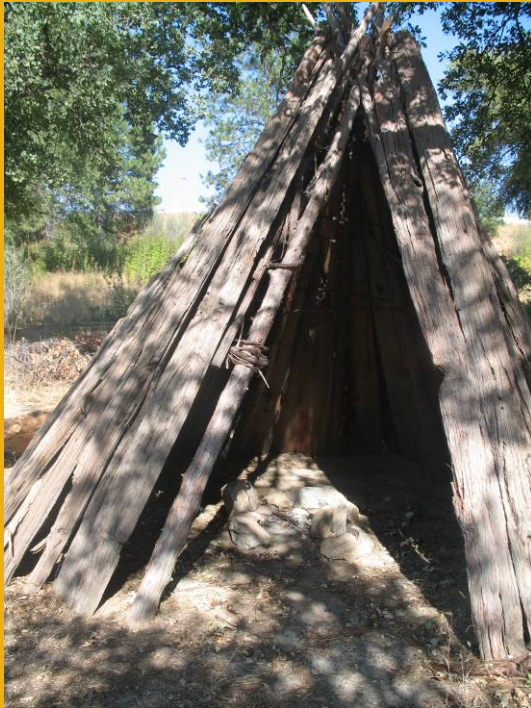




# Outdoor Areas - Concepts



# Outdoor Areas - Concepts



# Architectural Concepts



# Phase 3 Continuing Development (2017-2025)



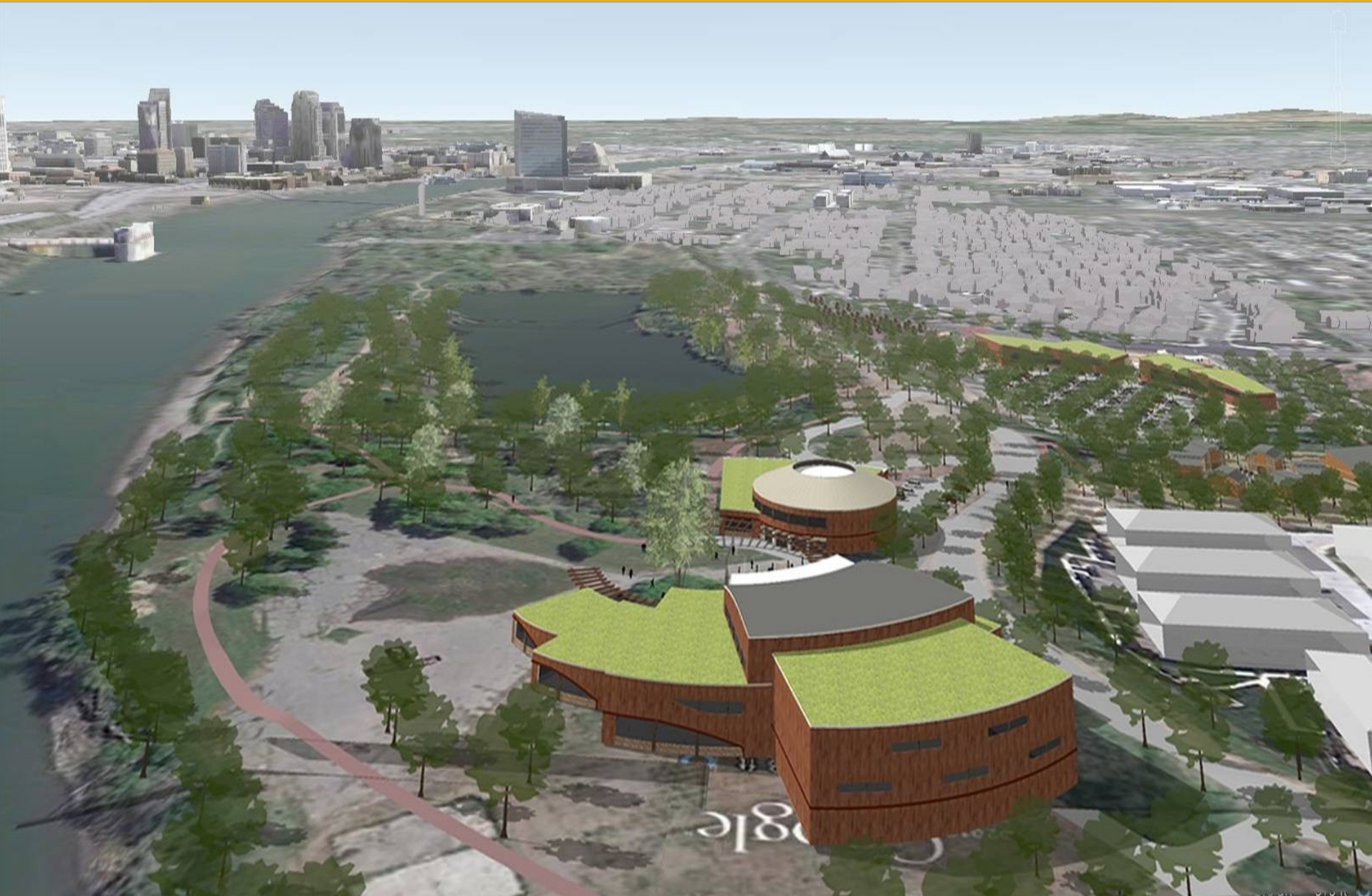
# Interior Spaces - Concepts



# Phase 4 Final Development (2025-2028)



# Artists Sketch



# Artists Sketch





# Outdoor Areas – Concepts for Commercial Spaces



# Artists Sketch – Entrance Courtyard



***“As the Sacramento region is central to the present and future of all Californians, so is the California Indian Heritage Center to the traditions, present and future, of the original people of this land.”***

***- Jack Norton (Hupa/Cherokee)***

# Thank You

**For More Information Please Visit:**



[www.CIHC.parks.ca.gov](http://www.CIHC.parks.ca.gov)

