

THE LOS ANGELES RIVER GREENWAY

IMPROVING WATERWAYS & TRAILS

Jeff Hutchins | Mia Lehrer + Associates

KEY STEPS IN TRANSFORMING THE LOS ANGELES RIVER:

Identify the Need

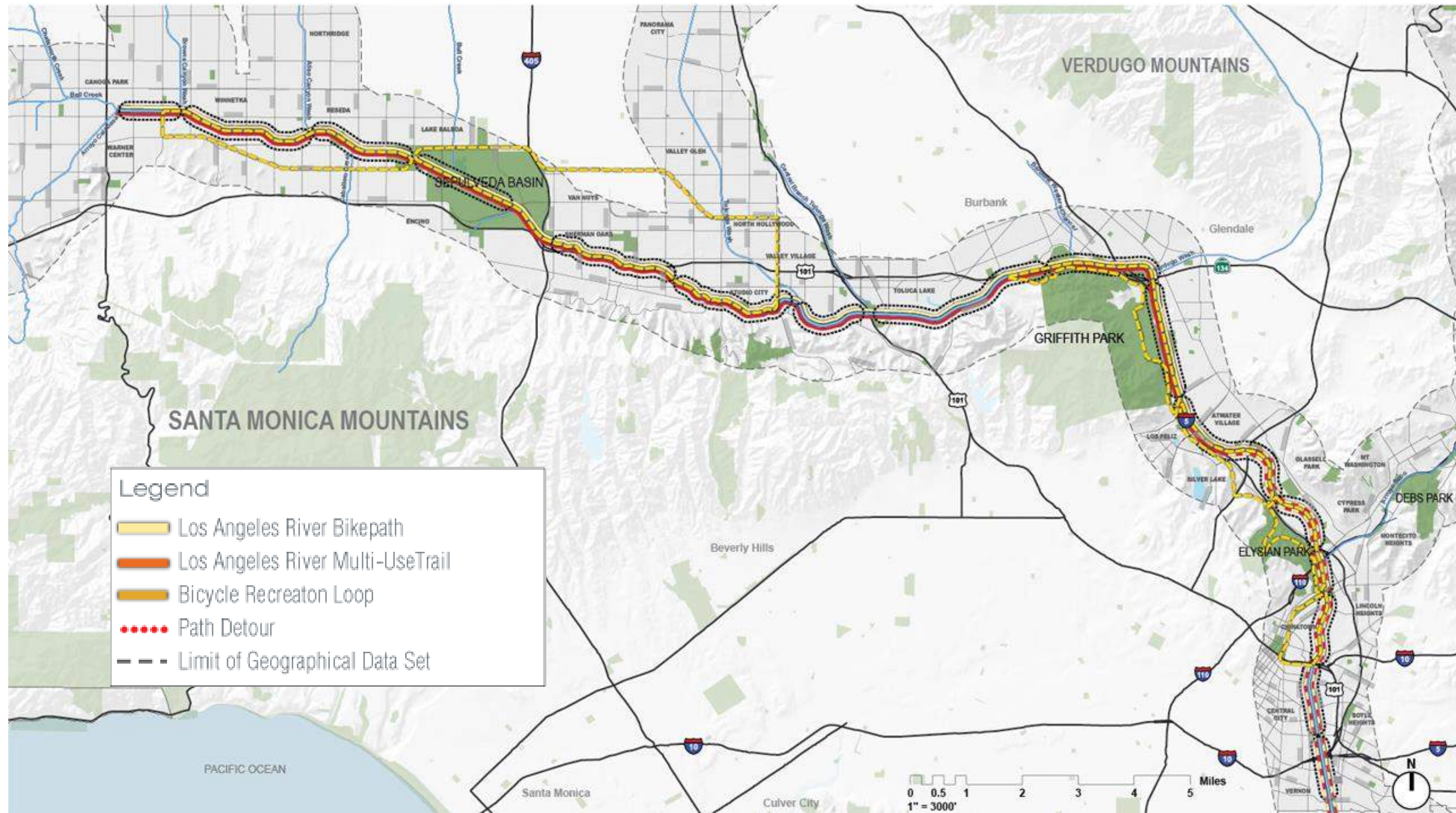
Identify the Project Site

Identify the Project Partners

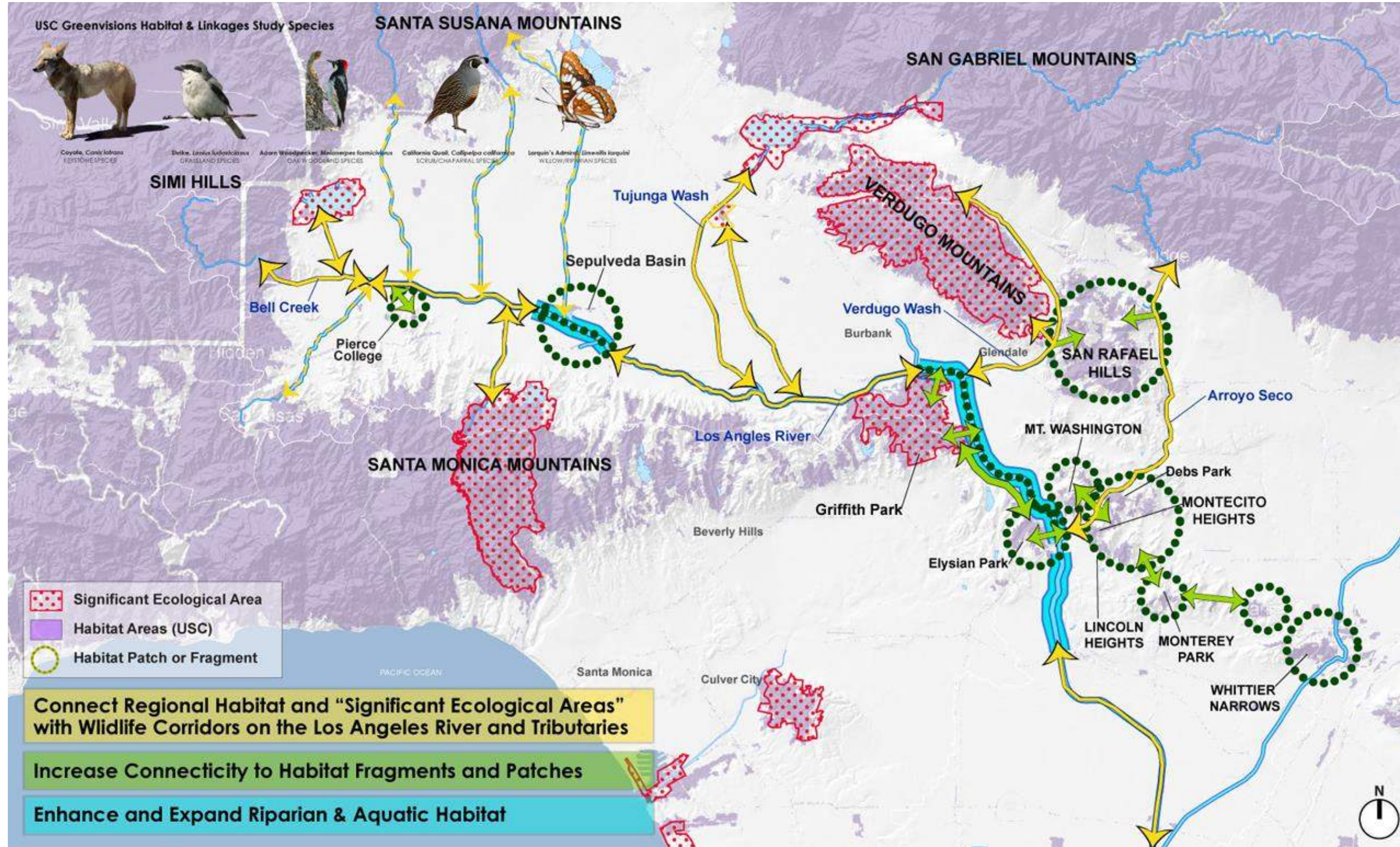
Go Through the Design Process

Get the Results!

Identify the Need:



Identify the Need:

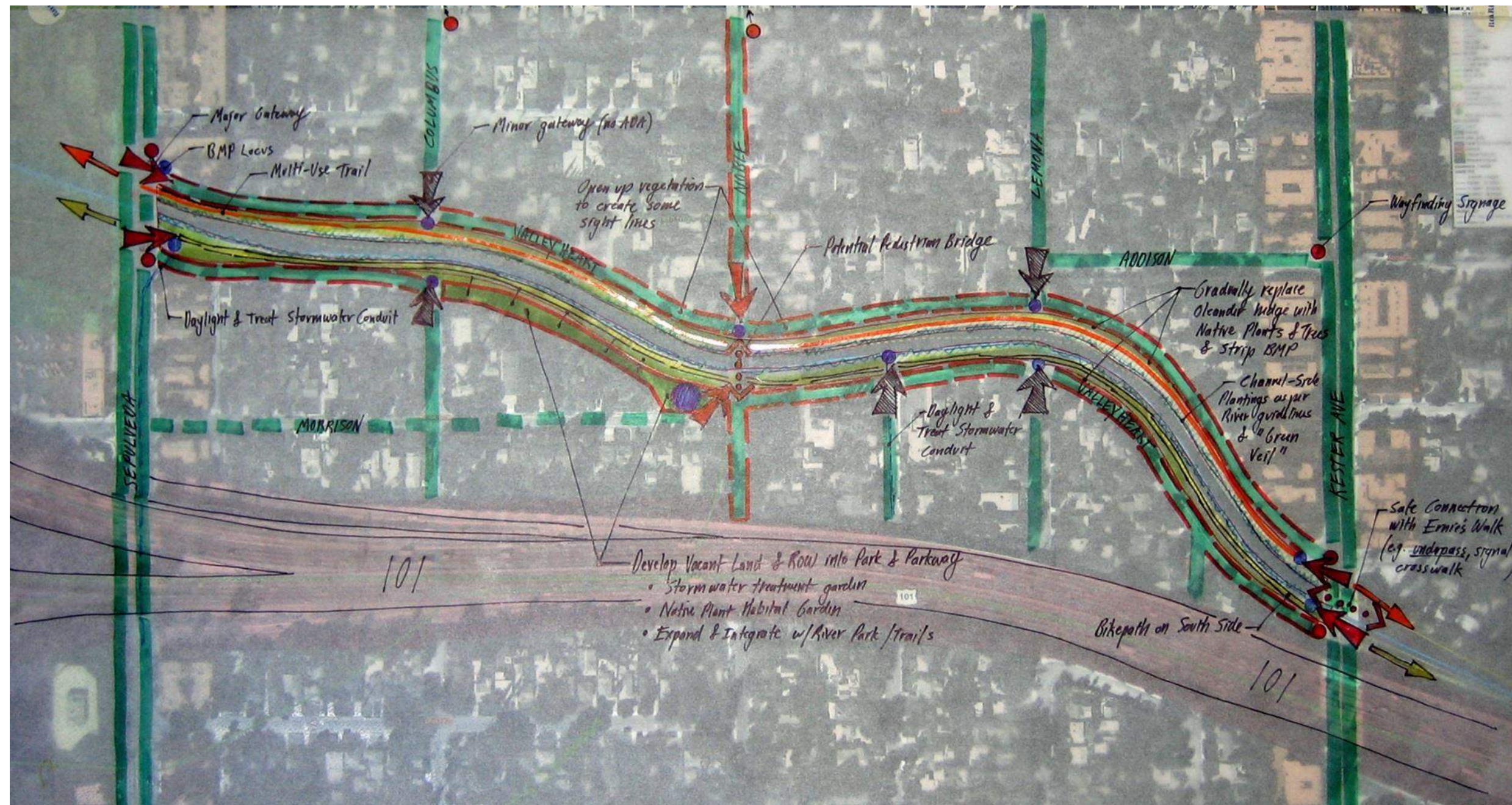


Identify the Need:



Identify the Need:

- Enhance Flood Storage
- Enhance Water Quality
- Enable Safe Public Access
- Restore a Functional Ecosystem
- Pedestrian connectivity
- Bicycle connectivity
- Equestrian connectivity
- Connect neighborhoods
- Storm water quality
- Storm water capture
- Storm water slowing



Identify the Need:

- Provide opportunities for educational and public facilities
- Celebrate the cultural heritage of the River

GOALS	SOUTH SIDE, SEPULVEDA TO KESTER AVE	ERNIE'S WALK EXTENSION (NORTH SIDE)	SOUTH SIDE, COLDWATER TO WHITSETT
ENHANCED BICYCLE COMMUTER ROUTE	Green	Green	Green
RICH PASSIVE RECREATION TRAIL	Green	Green	Yellow
LOCAL STORMWATER TREATMENT	Green	Green	Green
ACTIVE CIVIC/COMMERICAL EDGE	White	White	Yellow
ENHANCED HABITAT	Green	Yellow	Yellow
INTERPRETIVE ELEMENTS	Green	Yellow	Yellow
NATIVE VEGETATION PLANTING	Green	Green	Green
DESTINATION AND PARK-LIKE SPACE	Green	Green	Green

- Create continuous River greenway
- Connect neighborhoods to River
- Extend open space, recreation, and water quality features into neighborhoods

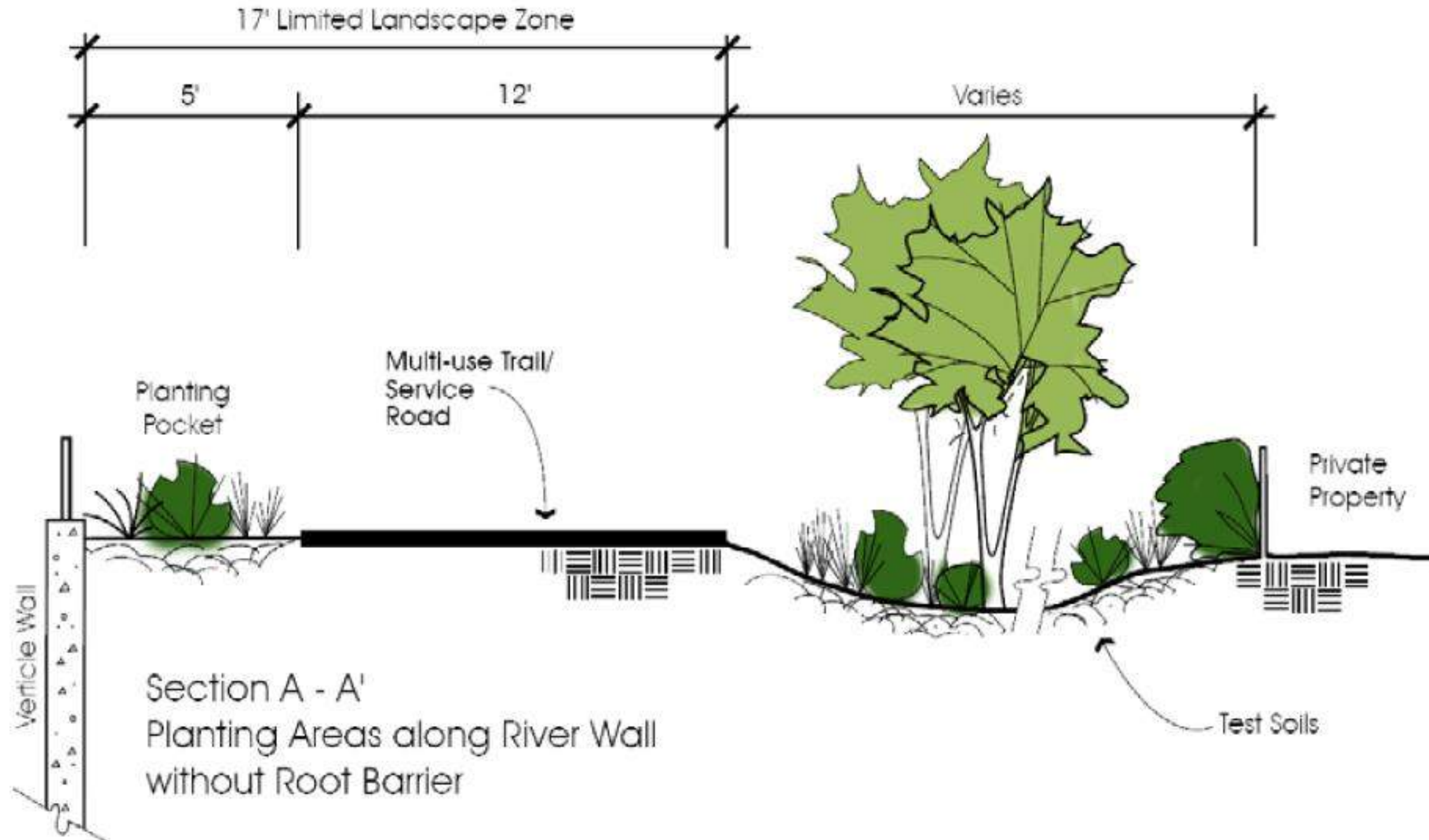
Identify the Project Site:

- Vacant city or county owned land
- County maintenance right of way



Identify the Project Site:

Figure 8.12 Design Guideline 3: Planting Patterns and Setbacks Along Trapezoidal & Rectangular Entrenched (Cross-Section View)

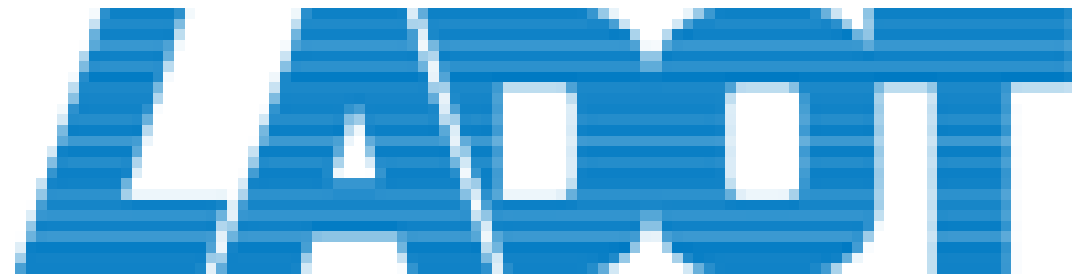


*From LARMP Landscaping Guidelines and Planting Palettes, January 2004

Identify the Project Partners:

Supervisors

Non-profits



Councilmembers

Neighborhood Beautification Groups



Grants



County

Design Process:

- Kick off = client and consultant
- Stakeholder/community involvement
 - Present project site
 - Gather information



Design References:

- Los Angeles River Master Plan
- Landscaping Guidelines and Plant Palettes
- Los Angeles River Revitalization Master Plan
- LADOT (Class 1 Bike path)

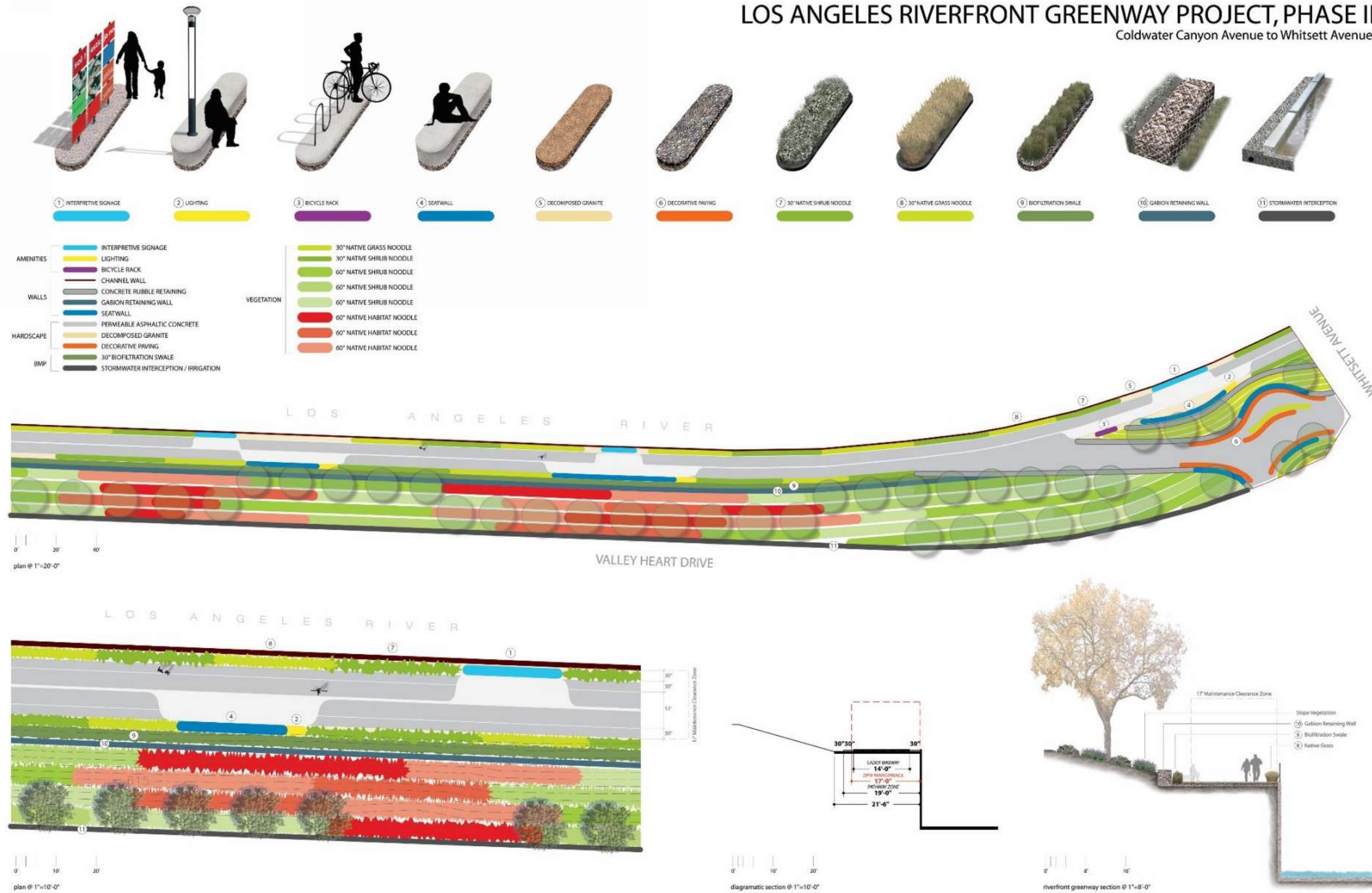
Design Process:

- 2nd stakeholder/community involvement
 - Show concept design
- 3rd, 4th, etc. Stakeholder/community involvement
 - Show progress



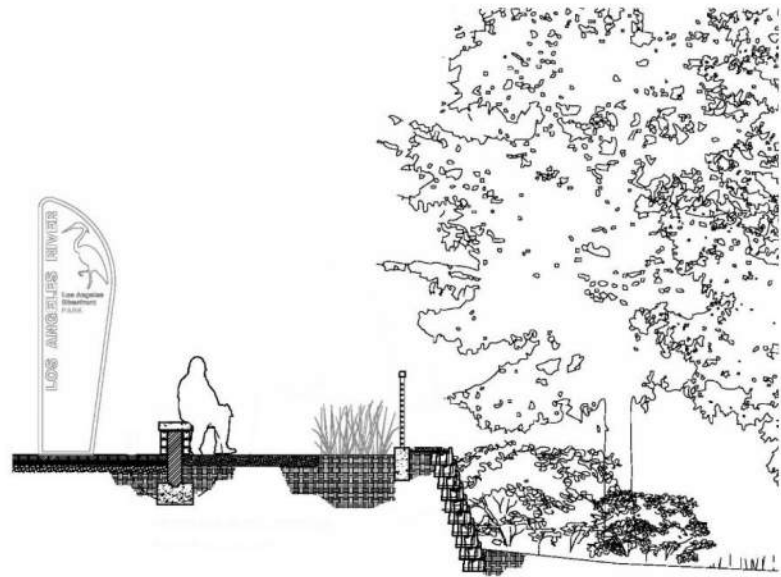
Design Process:

LOS ANGELES RIVERFRONT GREENWAY PROJECT, PHASE II Coldwater Canyon Avenue to Whitsett Avenue

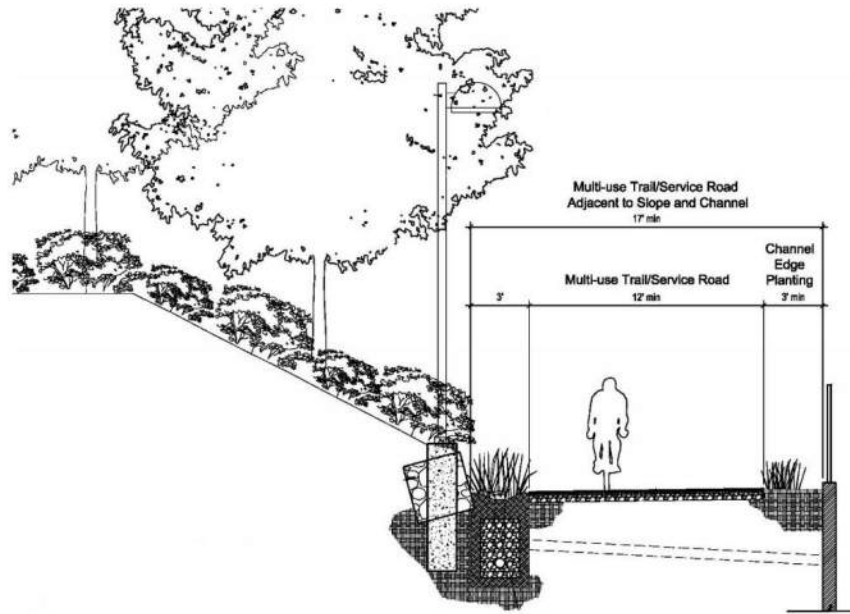


Design Process:

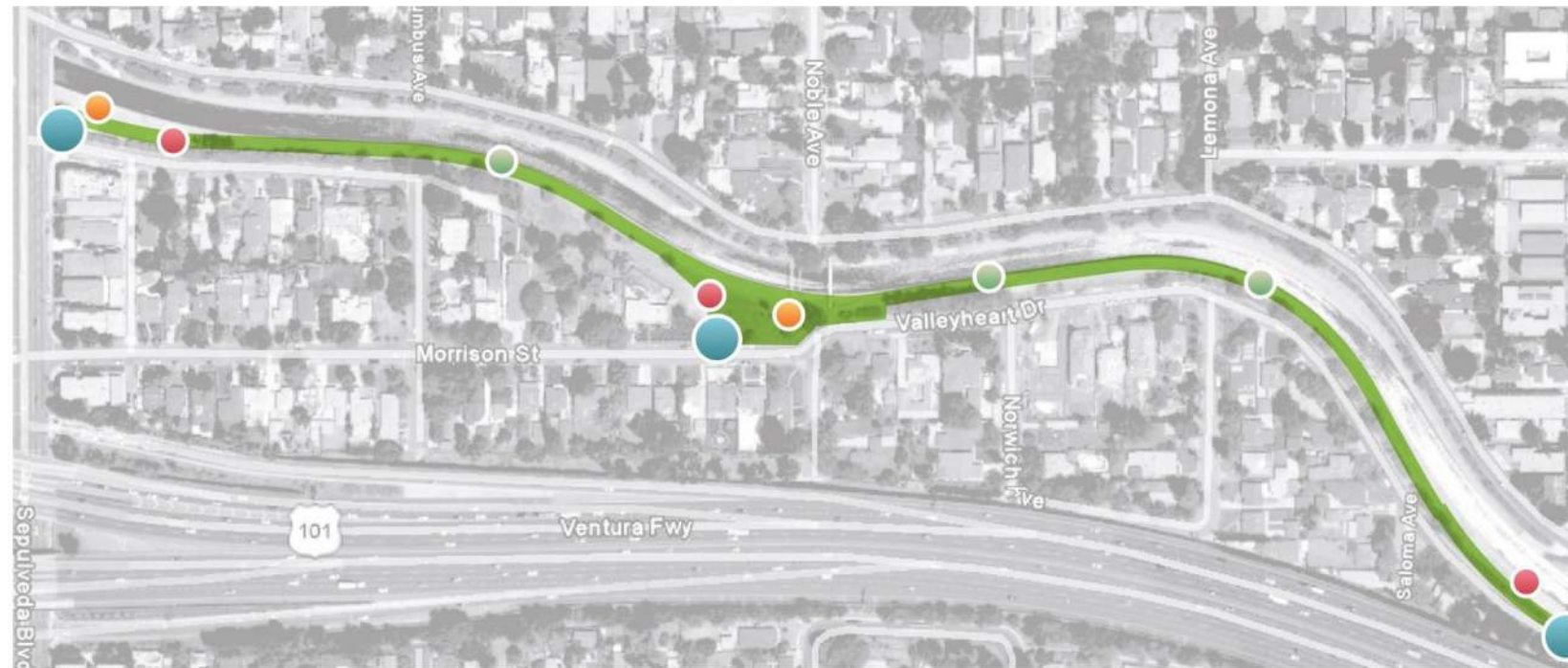
Sepulveda Blvd. to Kester Ave.



River Park Section



River Park Section



River Park Sign



Interpretive Sign



View of Park Path

Los Angeles Riverfront Park



Design Process:



- Challenges:
 - Plan check issues
 - LA County Flood Control
 - Army Corp of Engineers
 - Easement issues
 - LA County Flood Control-maintenance access.
 - Permissions (MOU's, permits, ROE's, etc.)
 - Maintenance agreements
 - Innovative designs take longer to approve
 - Army Corps Vegetation Policy

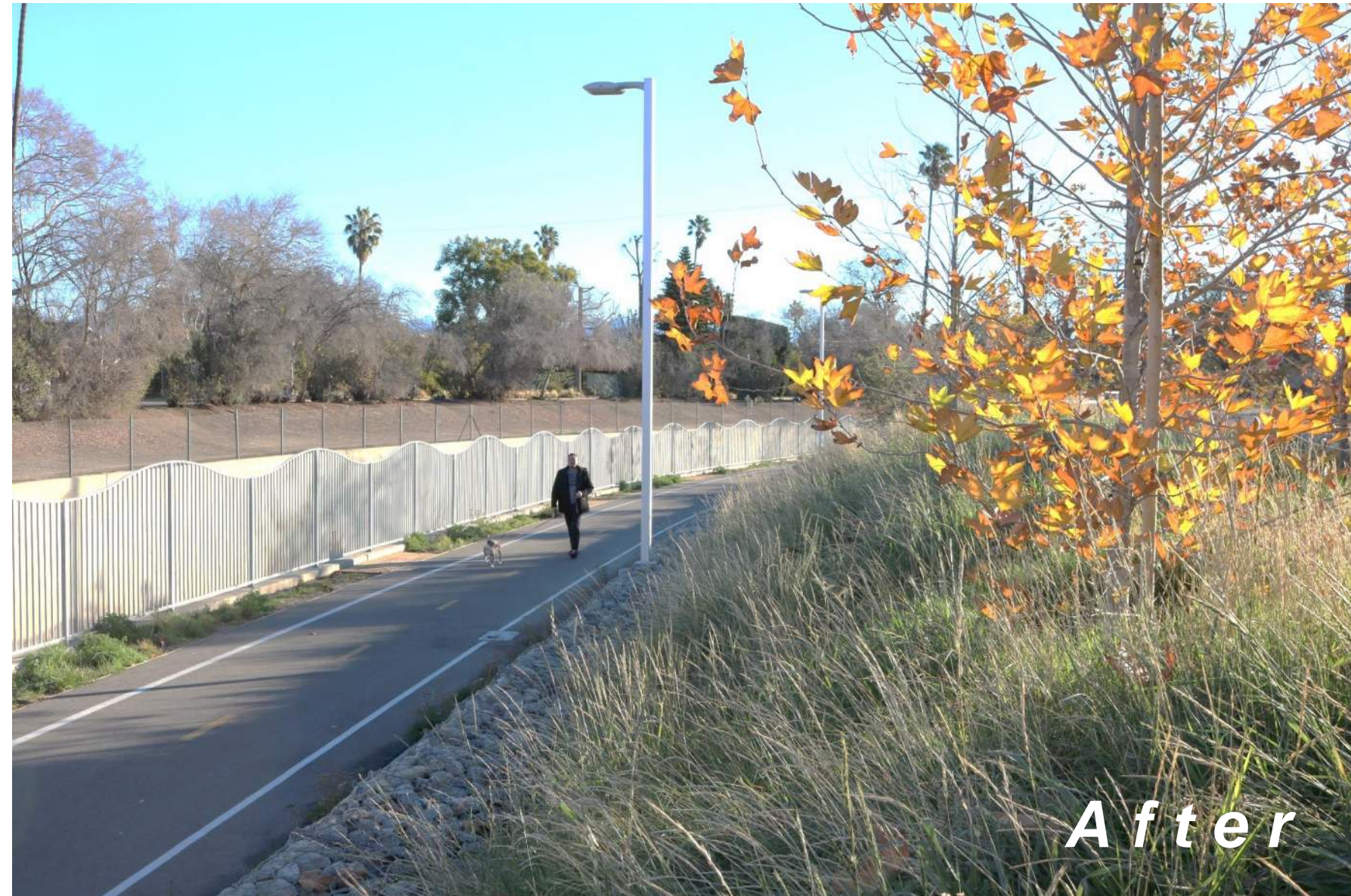
The Results:



The Results:



The Results:



The Results:



2016 California Trails & Greenways Conference

The Results:



The Results:



THE NEXT ONE IN 1/10TH THE TIME!



Before



After