



REVITALIZING THE LA RIVER
MARGOT JACOBS | MIA LEHRER + ASSOCIATES









EARLY HISTORY

1781

El Pueblo de la Reina de Los Angeles is founded where Olvera Street now exists

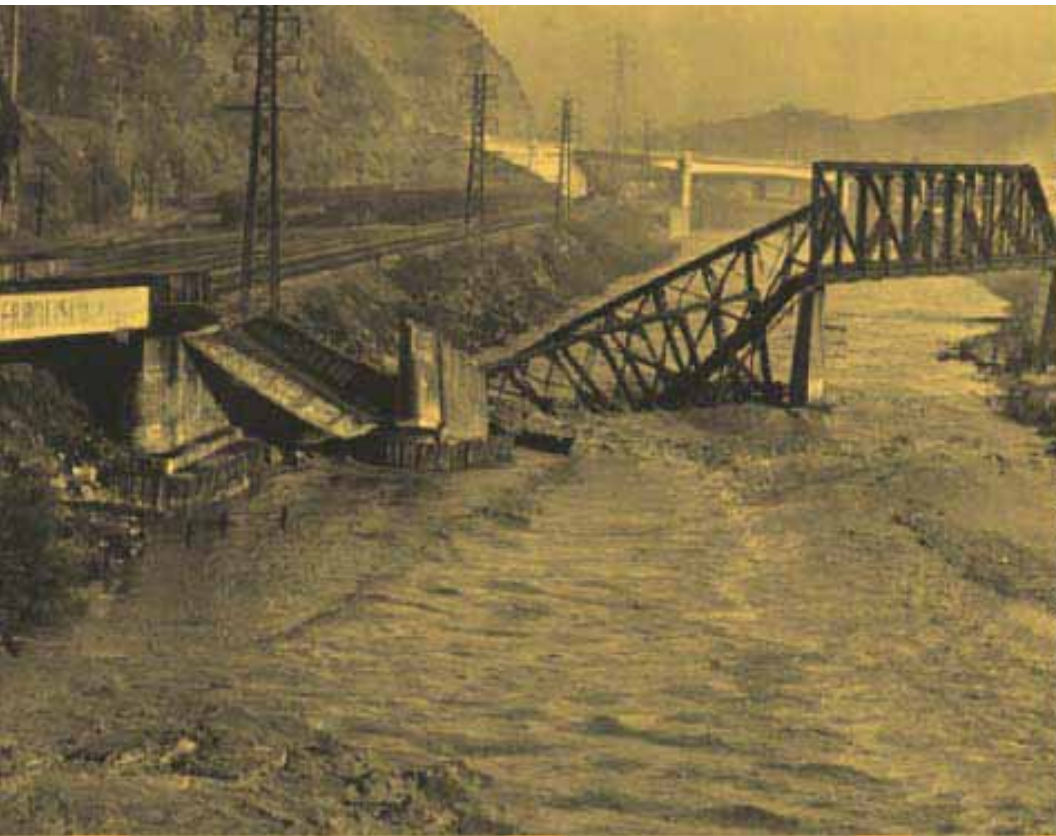


mid 1800s

Development boom results in homes and businesses being built in the floodplain

1850

Los Angeles incorporated as a City



FLOODING & DESTRUCTION

1825

A massive flood cuts a new path south of the pueblo to San Pedro Bay.

1914

Major flood causes widespread damage.

1934

Massive flooding occurs, causing Congress to authorize concrete channels.

1938

Most devastating flood on record, causing 115 deaths, over 6,000 homes damaged, and 108,000 acres (1.3 of L.A.) flooded.





CHANNELIZATION

1935

Army Corps of Engineers begins channelization



Map and model for proposed improvements and flood control

1941

Sepulveda Dam constructed



North of 7th at viaduct

1960

L.A. River channelization completed



New Arroyo Seco parkway



REVITALIZATION

1985

Group of artists and poet Lewis MacAdams found Friends of the Los Angeles River (FoLAR)



1989

Mayor Tom Bradley establishes first River task force to look at potential River improvements

1990

County of Los Angeles River Task Force formed, restoration begins



REVITALIZATION

1996

A county-wide L.A. River Master Plan is approved by Board of Supervisors



2006

City signs agreement with Army Corps to co-sponsor the L.A. River Ecosystem Restoration Feasibility Study (ARBOR)

City adopts the Los Angeles River Revitalization Master Plan (LARRMP), creating blueprint for future of the River

2007

2009

The Los Angeles River Revitalization Corporation is established

U.S. EPA declares the Los Angeles River a 'traditionally navigable waterway', allowing for protection under the Clean Water Act (CWA)

2010

2011

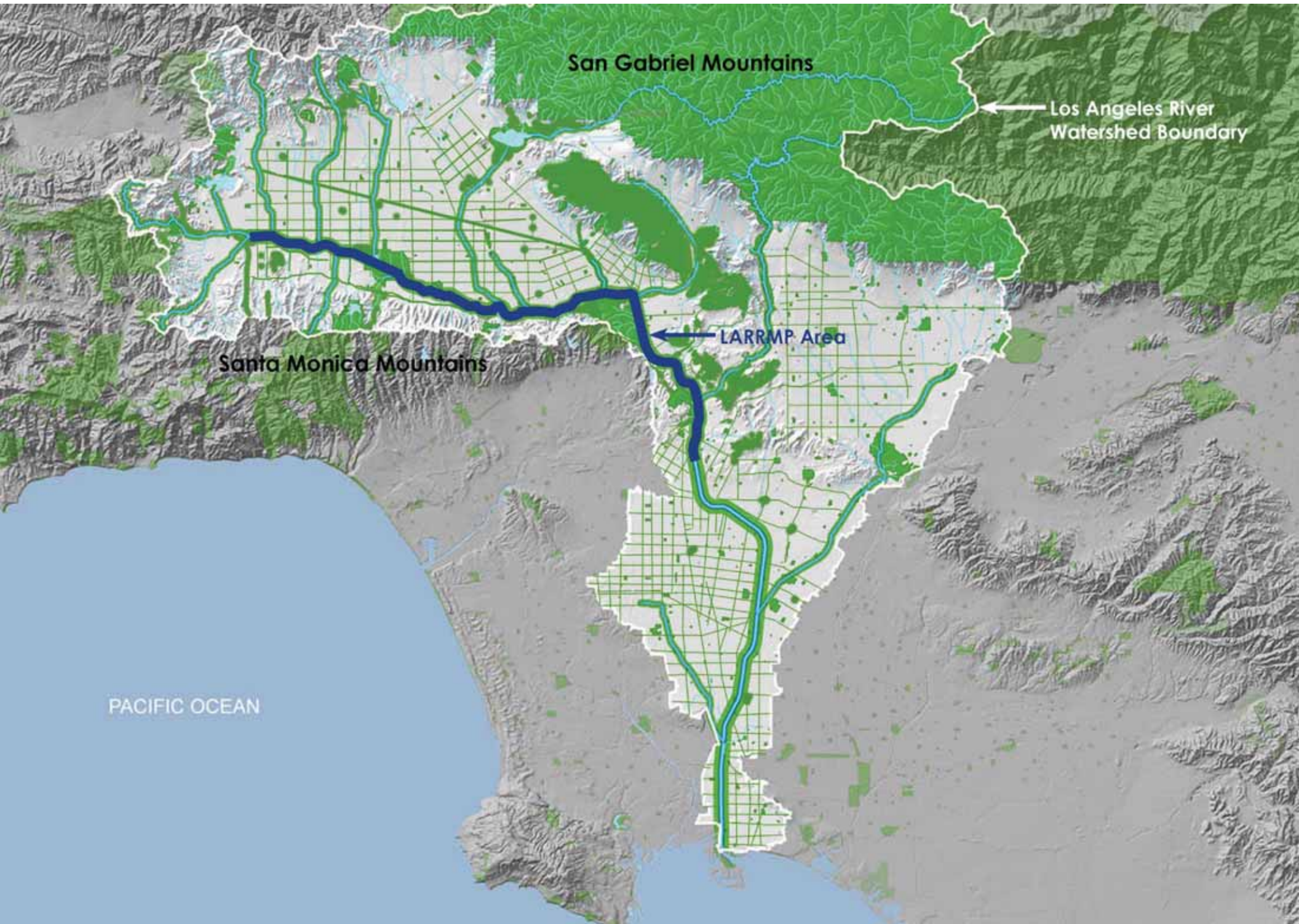
L.A. River chosen for Federal Urban Waters Pilot program

City of L.A. receives Sustainable Communities Federal Partnership Grant and establishes the Northeast Los Angeles (NELA) Riverfront Collaborative

Army Corps recommends Alternative 20, the most comprehensive restoration

2012

2014>



San Gabriel Mountains

Los Angeles River
Watershed Boundary

Santa Monica Mountains

LARRMP Area

PACIFIC OCEAN



JURISDICTIONAL COMPLEXITY

Surrounded by other municipalities, over the past two decades, Los Angeles communities has worked with many local, state, and federal government agencies and nongovernmental organizations, in efforts to revitalize the Los Angeles River and its watershed.

WATERSHED

The Los Angeles River watershed which encompasses 871 square miles, contains a population approaching 5 million people. In the lower Los Angeles watershed, only 13 percent of the land area remains as open space.

A SINGLE PURPOSE INFRASTRUCTURE THAT DIVIDES COMMUNITIES ENVIRONMENTALLY, ECONOMICALLY AND SOCIALLY

SELECT STAKEHOLDERS
SELECT PLANS + POLICIES
SELECT PROJECTS

CITY OF LOS ANGELES GOVERNMENT



COUNTY, STATE, FEDERAL GOVERNMENT



ORGANIZATIONS



MASTER PLAN GOALS

REVITALIZE THE RIVER

ENHANCE FLOOD STORAGE

ENHANCE WATER QUALITY

ENABLE SAFE PUBLIC ACCESS

RESTORE RIPARIAN ECOSYSTEM

GREEN THE NEIGHBORHOODS

ENHANCE RIVER IDENTITY

INCORPORATE PUBLIC ART

CONNECT NEIGHBORHOODS

EXTEND OPEN SPACE, RECREATIONAL, AND WATER QUALITY

CREATE CONTINUOUS RIVER GREENWAYS

CREATE VALUE

IMPROVE QUALITY OF LIFE

COMMERCIAL OPPORTUNITIES

URBAN DESIGN AND LAND USE

SENSITIVITY TO ENVIRONMENT

FOCUS ON UNDERUSED + DISADVANTAGED AREAS

CAPTURE COMMUNITY OPPORTUNITIES

MAKE RIVER FOCUS OF ACTIVITY

FOSTER CIVIC PRIDE

ENGAGE RESIDENTS IN PROCESS

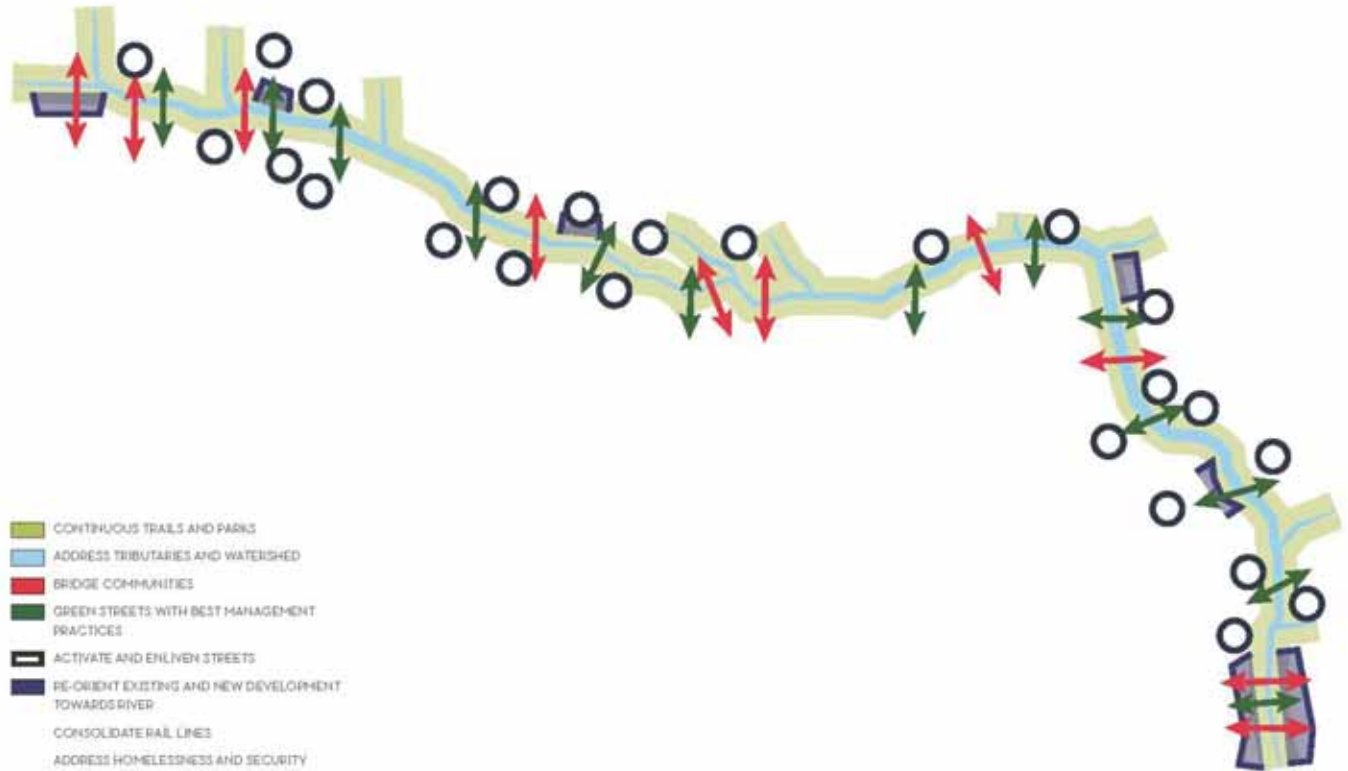
CELEBRATE RIVER CULTURAL HERITAGE

PROVIDE NEW EDUCATIONAL AND PUBLIC FACILITIES



WORKING WITH STAKEHOLDERS

In 2005, Mayor Antonio Villaraigosa formally endorsed the City Council's motion to develop this Los Angeles River Revitalization Master Plan (LARRMP) representing a milestone achievement for the City in its massive scope—coalescing diverse stakeholders around a revitalization agenda for the still often-overlooked Los Angeles River.

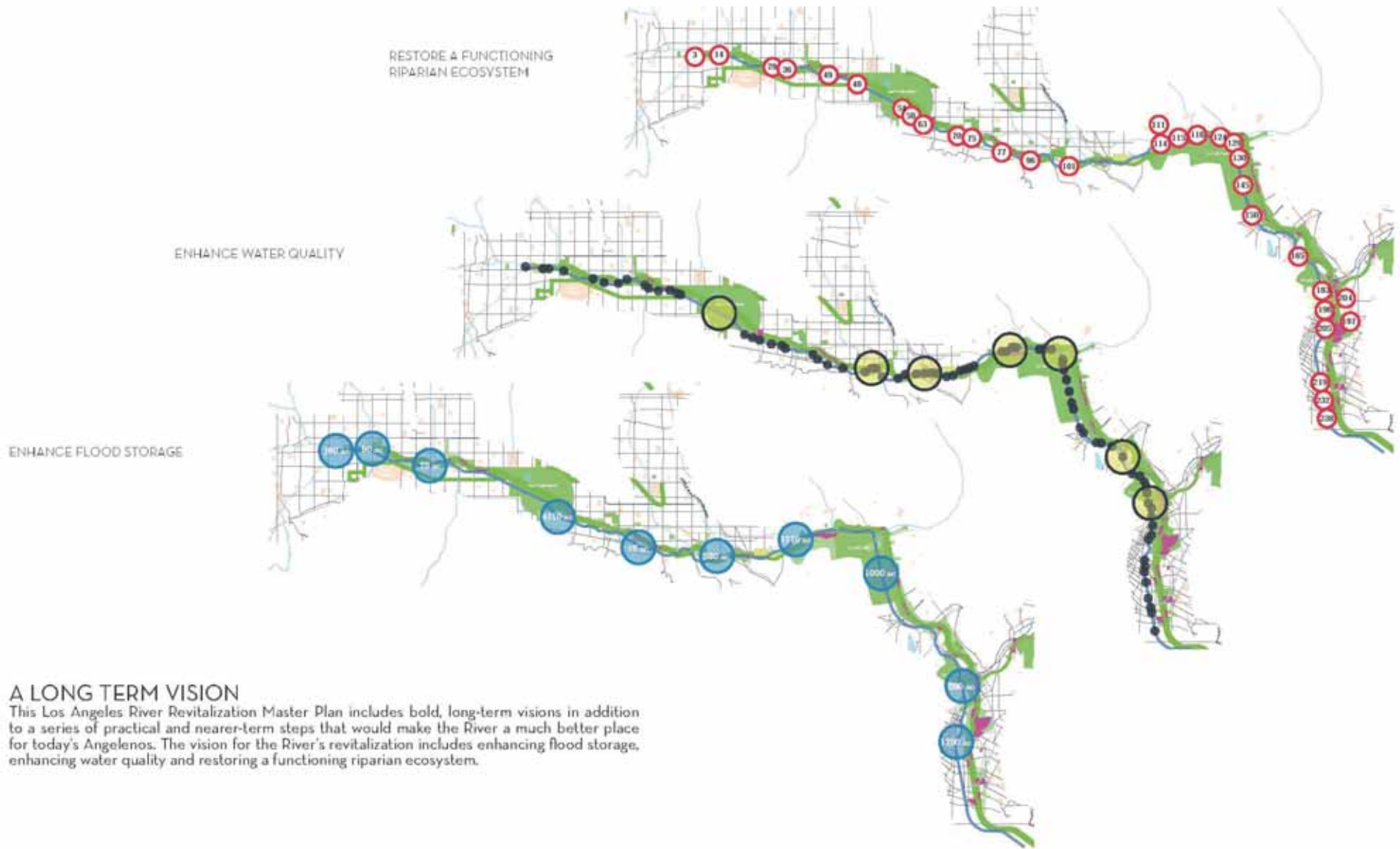


COMMUNITY INPUT

Community input and public support are vital to the success of any Los Angeles River revitalization effort. Through September 2006, a total of 788 comments were received; the largest percentage of comments focusing on public enjoyment/recreation (23%) and environment and natural system restoration (18%).

(An excerpt from community recommendations for the Los Angeles River Revitalization Master Plan.)

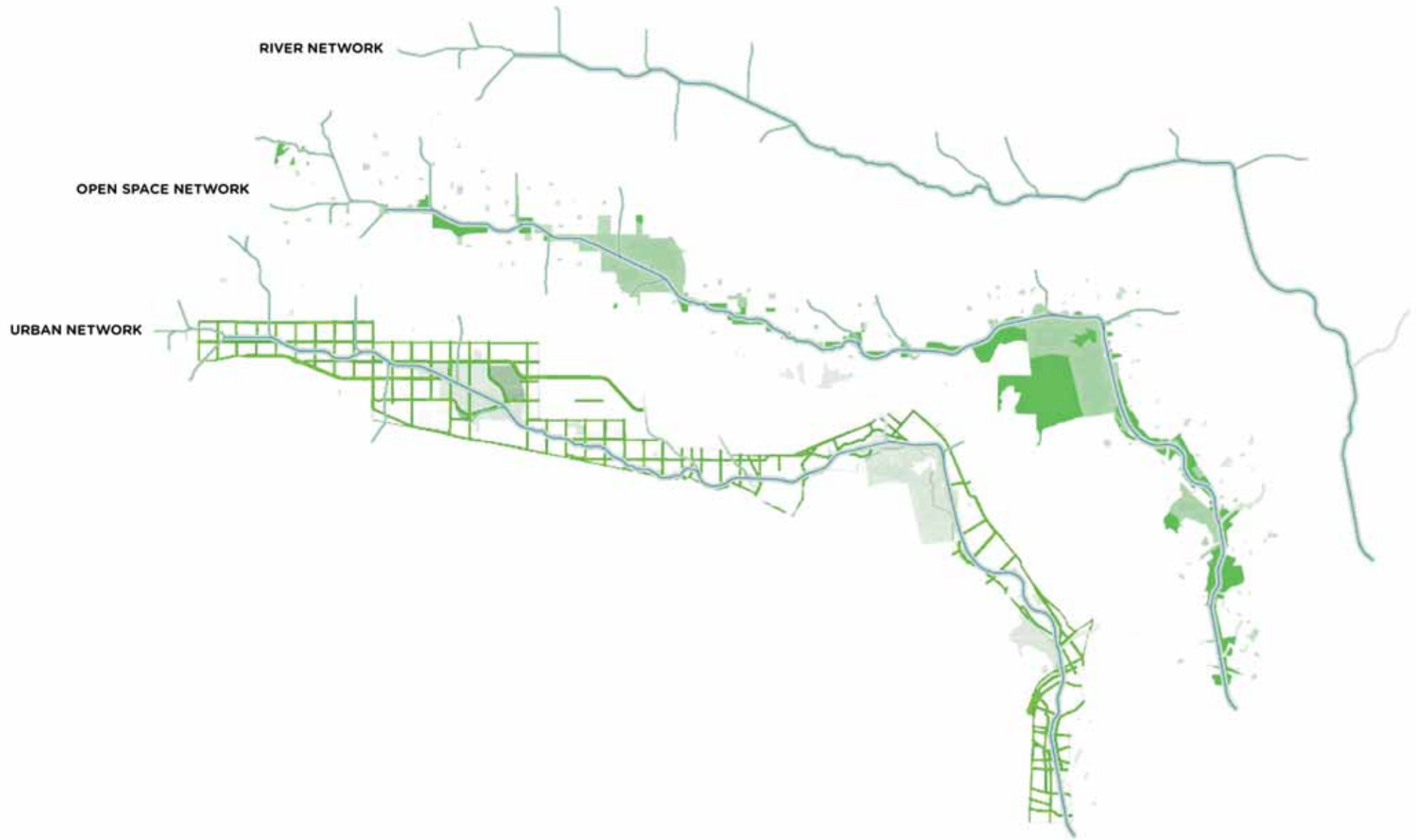
COMMUNITY OUTREACH VITAL TO THE RIVER'S SUCCESS



A LONG TERM VISION

This Los Angeles River Revitalization Master Plan includes bold, long-term visions in addition to a series of practical and nearer-term steps that would make the River a much better place for today's Angelenos. The vision for the River's revitalization includes enhancing flood storage, enhancing water quality and restoring a functioning riparian ecosystem.

MULTIPLE STRATEGIES ENHANCING FLOOD STORAGE, WATER QUALITY, AND RESTORING ECOSYSTEMS



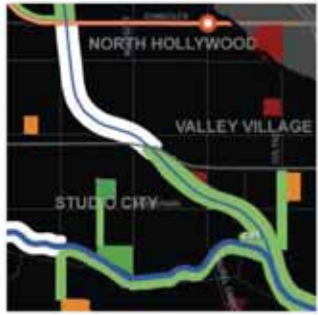
RIVER NETWORK

OPEN SPACE NETWORK

URBAN NETWORK

MERGING NETWORKS WATER INFRASTRUCTURE, OPEN SPACE, AND URBAN LIFE

GREENWAY EXTENSIONS



EXTEND GREENWAY TO ORANGE LINE
COMPLETE BIKEWAY



EXTEND TO EXISTING SCHOOLS
STREET END BMP'S



EXTEND TO EXISTING SCHOOLS
MISSION ROAD OPEN SPACE
PROP 50 PROP O SITES



RIVER CORRIDOR URBAN DESIGN
GREENWAY EXPANSION



RIVER CORRIDOR URBAN DESIGN
RIVER BUFFER ZONE
LATERAL EXPANSION



RIVER CORRIDOR DESIGN
REDLINE LOOP



EXTENDING THE GREENWAY INTO NEIGHBORHOODS CREATING NEIGHBORHOOD LOOPS

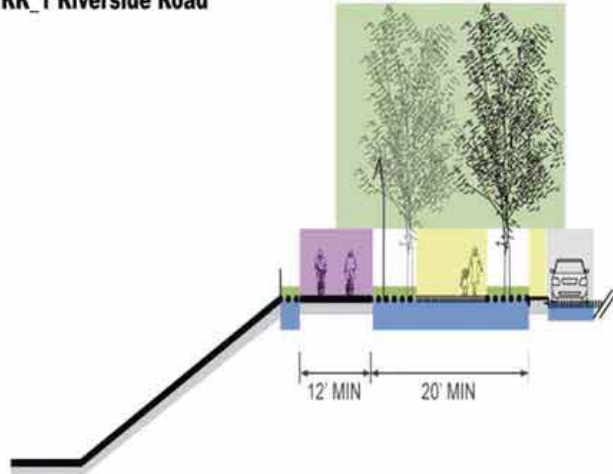
RIVER TYPOLOGIES

Riverside Roads

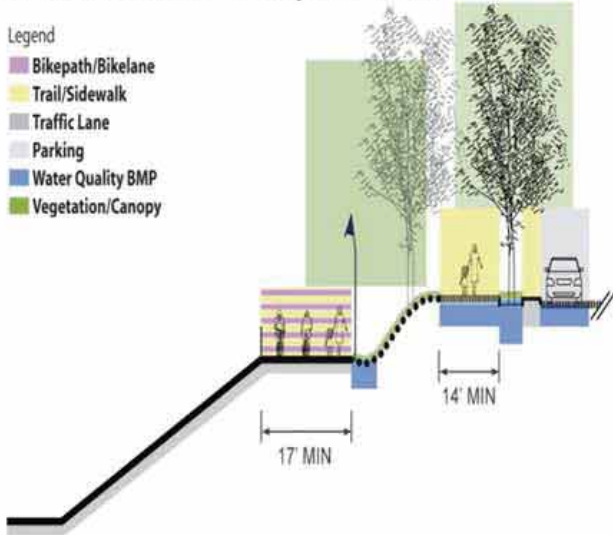
Streets fronting on the river, designed to face and improve river access and amenities.

- Use Street ROW to create enhanced river edge trails, amenities, and ecology.
- Treat storm water run-off from adjacent hard trails and streets.
- Use porous paving and other BMPs.
- Provide multiple circulation routes.

RR_1 Riverside Road



RR_2 Riverside Road with Sloped River ROW



- Legend
- Bikepath/Bikelane
 - Trail/Sidewalk
 - Traffic Lane
 - Parking
 - Water Quality BMP
 - Vegetation/Canopy

Paseos

Pedestrian thoroughfare provides access midblock or where roads are not necessary.

- Service / emergency vehicle access
- Native tree & shrub planting
- Shade structures
- Water Quality: Permeable Paving, Biofiltration, Bioswale, and/or Infiltration Strips.
- Vegetal buffer from adjacent uses (Parking lots, Service Yards, etc.)
- Wayfinding Signage
- Public Art

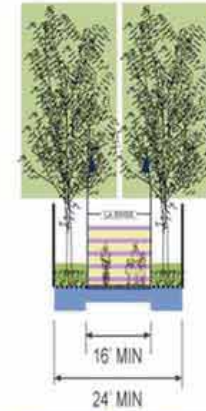
Paseo Promenades

Enhanced pedestrian connections to River through proposed and existing development. Potential commercial or open space promenade.

- Service / emergency vehicle access
- Native tree & shrub planting
- Shade structures: Pergolas
- Themed / public art
- Water Quality: Permeable Paving, Biofiltration, Bioswale, and/or Infiltration Strips.
- Vegetal buffer from adjacent uses (Parking lots, Service Yards, etc.)
- Wayfinding Signage
- Furniture / Public Art



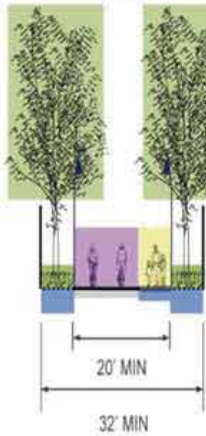
P_1



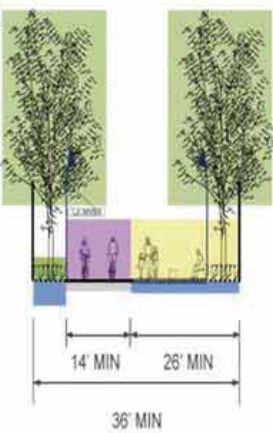
PP_1



P_1



PP_2



- Legend
- Bikepath/Bikelane
 - Trail/Sidewalk
 - Traffic Lane
 - Parking
 - Water Quality BMP
 - Vegetation/Canopy

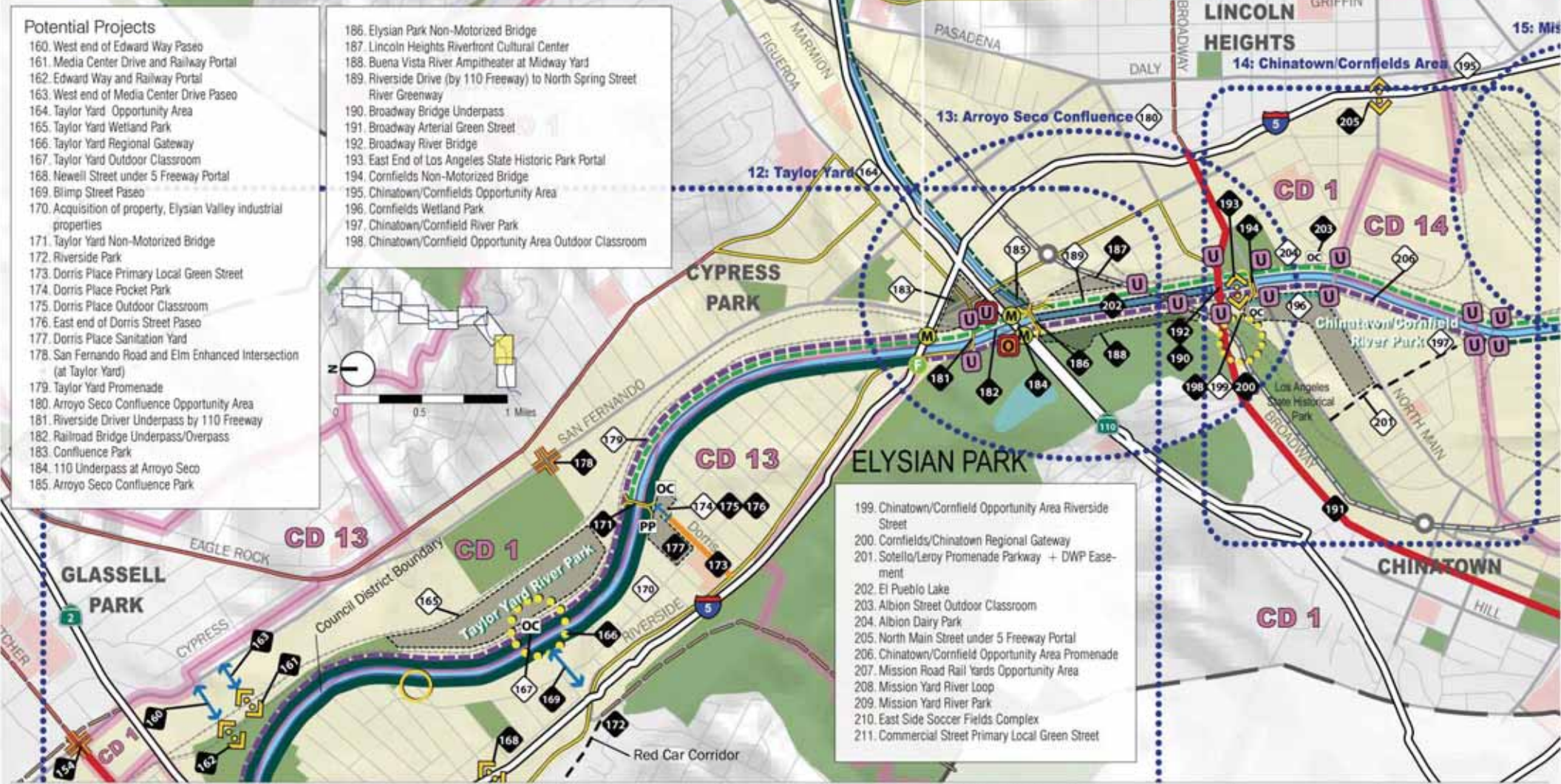
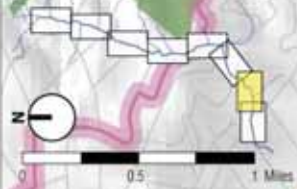
River Channel Reach 7

River Channel Reach 8

Potential Projects

- 160. West end of Edward Way Paseo
- 161. Media Center Drive and Railway Portal
- 162. Edward Way and Railway Portal
- 163. West end of Media Center Drive Paseo
- 164. Taylor Yard Opportunity Area
- 165. Taylor Yard Wetland Park
- 166. Taylor Yard Regional Gateway
- 167. Taylor Yard Outdoor Classroom
- 168. Newell Street under 5 Freeway Portal
- 169. Blimp Street Paseo
- 170. Acquisition of property, Elysian Valley industrial properties
- 171. Taylor Yard Non-Motorized Bridge
- 172. Riverside Park
- 173. Dorris Place Primary Local Green Street
- 174. Dorris Place Pocket Park
- 175. Dorris Place Outdoor Classroom
- 176. East end of Dorris Street Paseo
- 177. Dorris Place Sanitation Yard
- 178. San Fernando Road and Elm Enhanced Intersection (at Taylor Yard)
- 179. Taylor Yard Promenade
- 180. Arroyo Seco Confluence Opportunity Area
- 181. Riverside Driver Underpass by 110 Freeway
- 182. Railroad Bridge Underpass/Overpass
- 183. Confluence Park
- 184. 110 Underpass at Arroyo Seco
- 185. Arroyo Seco Confluence Park

- 186. Elysian Park Non-Motorized Bridge
- 187. Lincoln Heights Riverfront Cultural Center
- 188. Buena Vista River Amphitheater at Midway Yard
- 189. Riverside Drive (by 110 Freeway) to North Spring Street River Greenway
- 190. Broadway Bridge Underpass
- 191. Broadway Arterial Green Street
- 192. Broadway River Bridge
- 193. East End of Los Angeles State Historic Park Portal
- 194. Cornfields Non-Motorized Bridge
- 195. Chinatown/Cornfields Opportunity Area
- 196. Cornfields Wetland Park
- 197. Chinatown/Cornfield River Park
- 198. Chinatown/Cornfield Opportunity Area Outdoor Classroom



- 199. Chinatown/Cornfield Opportunity Area Riverside Street
- 200. Cornfields/Chinatown Regional Gateway
- 201. Sotello/Leroy Promenade Parkway + DWP Easement
- 202. El Pueblo Lake
- 203. Albion Street Outdoor Classroom
- 204. Albion Dairy Park
- 205. North Main Street under 5 Freeway Portal
- 206. Chinatown/Cornfield Opportunity Area Promenade
- 207. Mission Road Rail Yards Opportunity Area
- 208. Mission Yard River Loop
- 209. Mission Yard River Park
- 210. East Side Soccer Fields Complex
- 211. Commercial Street Primary Local Green Street

| | | | | | | | | |
|--|--|--|---|--|--|---|---|--|
| LEGEND <ul style="list-style-type: none"> — Existing/Funded River Greenway + Bikepath - - - Existing/Funded River Greenway + Recreation Trail - - - Proposed River Greenway + Bikepath - - - Proposed River Greenway + Recreation Trail - - - Promenades - - - Primary Arterial Green Streets - - - Primary Local Green Streets | <ul style="list-style-type: none"> — River Industrial Street - - - Riverside Streets - - - Paseos + Enhanced Intersection PP Pocket Parks OC River Outdoor Classrooms | <ul style="list-style-type: none"> ○ Regional Gateways ○ Neighborhood Gateways ○ Portals ○ Non-Motorized Bridges ○ Existing Non-Motorized Bridges ○ Opportunity Area | Potential Projects <ul style="list-style-type: none"> ◆ Potential Project ◆ Potential Project ◆ Potential project extending into the community that may require the acquisition of private property - - - Potential Linear Projects | Recommended Grade Separated Bridge Crossing <ul style="list-style-type: none"> E Existing Bikeway Access F Bikeway Access Funded M Bridge Crossing Requiring Minor Improvement G At-Grade Crossing U Underpass O Overcrossing D Detour Around Obstacle | <ul style="list-style-type: none"> U Difficult Undercrossings O Difficult Overcrossing | Bikeways <ul style="list-style-type: none"> — Existing Bike Path — Existing Bike Lane — Existing Bike Route — Proposed Bike Path — Proposed Bike Lane — Proposed Bike Route | Other <ul style="list-style-type: none"> — Green Corridor - - - Council District Boundary - - - City Boundary — School — Parks — 1 Mile Extent of Data | Public Transportation <ul style="list-style-type: none"> — Metro Line ○ Metro Stop |
|--|--|--|---|--|--|---|---|--|



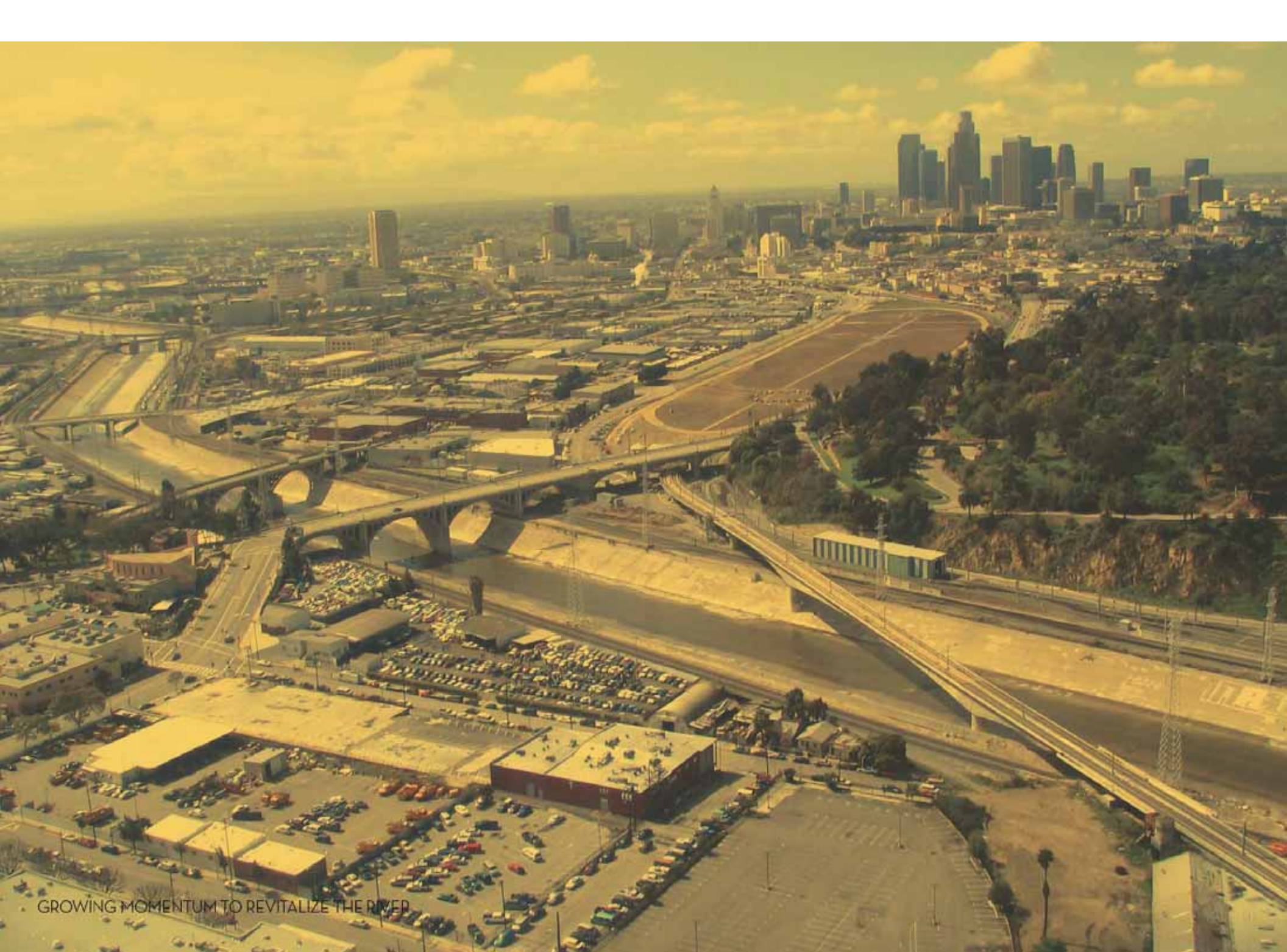
A NEW VISION FOR THE CHANNEL. CLEANING WATER, CONTROLLING FLOODING, & CREATING PARKS



A NEW VISION FOR THE CHANNEL. CLEANING WATER, CONTROLLING FLOODING, & CREATING PARKS



A NEW VISION FOR THE CHANNEL CLEANING WATER, CONTROLLING FLOODING, & CREATING PARKS



GROWING MOMENTUM TO REVITALIZE THE RIVER



REVITALIZATION

1996

A county-wide L.A. River Master Plan is approved by Board of Supervisors



2006

City signs agreement with Army Corps to co-sponsor the L.A. River Ecosystem Restoration Feasibility Study (ARBOR)

City adopts the Los Angeles River Revitalization Master Plan (LARRMP), creating blueprint for future of the River

2007

2009

The Los Angeles River Revitalization Corporation is established

U.S. EPA declares the Los Angeles River a 'traditionally navigable waterway', allowing for protection under the Clean Water Act (CWA)

2010

2011

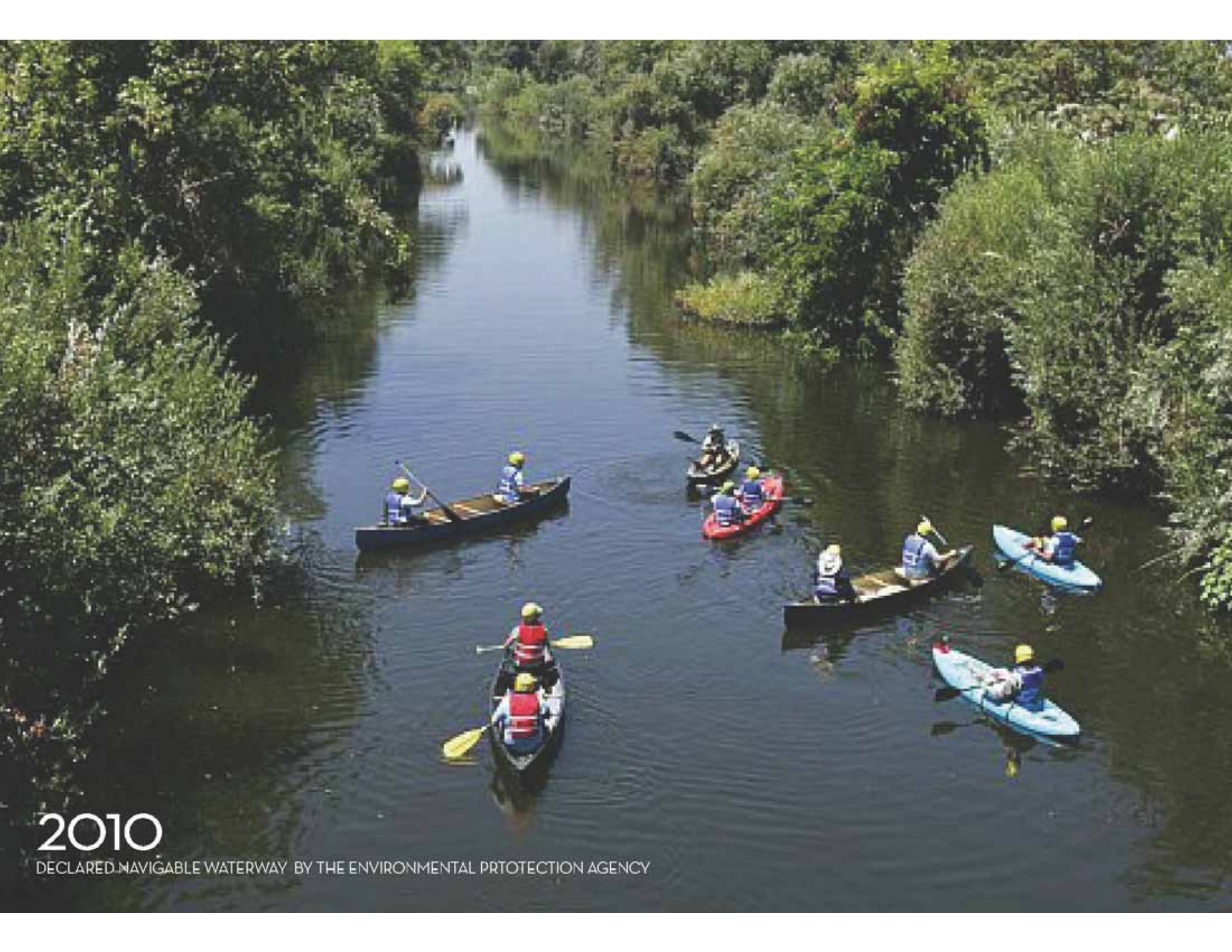
L.A. River chosen for Federal Urban Waters Pilot program

City of L.A. receives Sustainable Communities Federal Partnership Grant and establishes the Northeast Los Angeles (NELA) Riverfront Collaborative

Army Corps recommends Alternative 20, the most comprehensive restoration

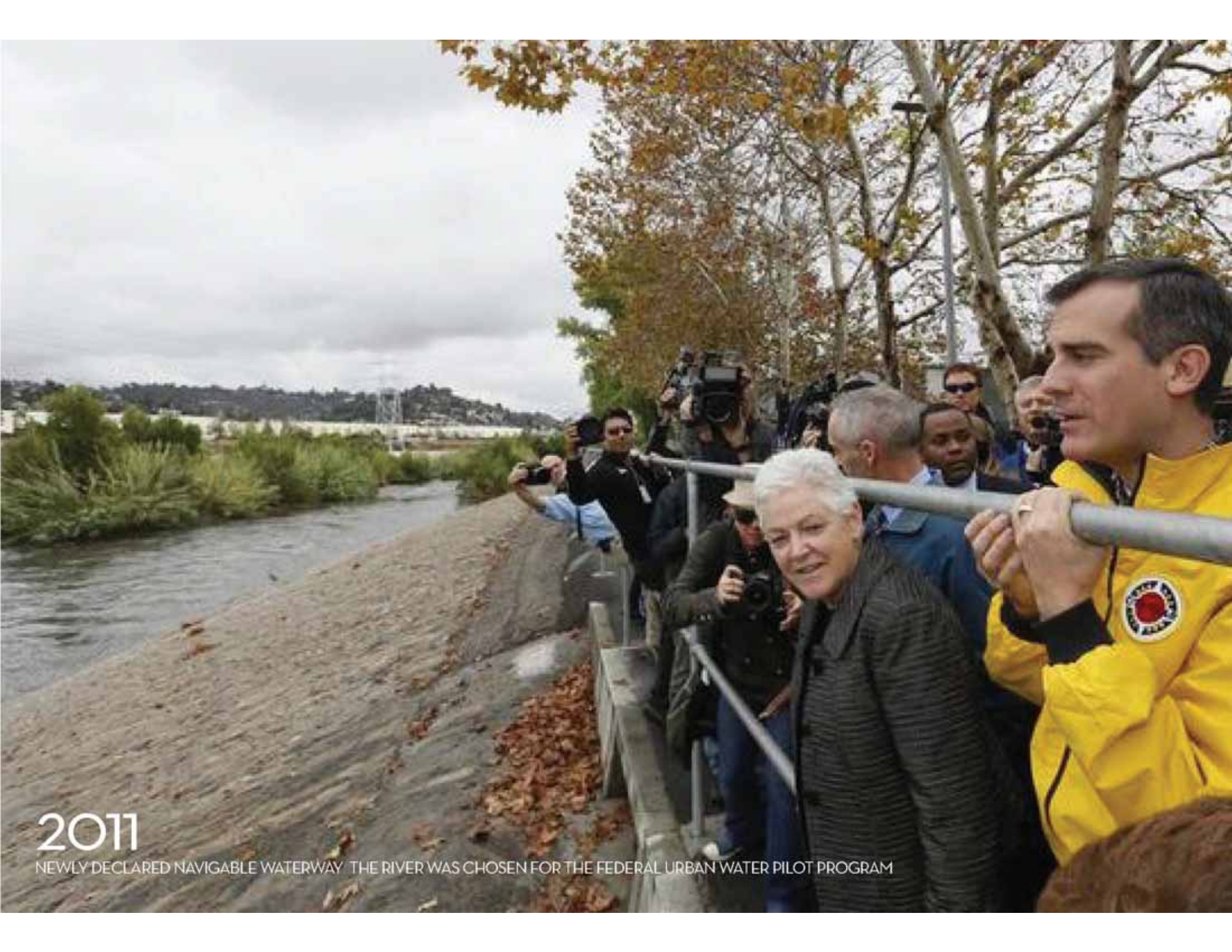
2012

2014>



2010

DECLARED NAVIGABLE WATERWAY BY THE ENVIRONMENTAL PROTECTION AGENCY



2011

NEWLY DECLARED NAVIGABLE WATERWAY THE RIVER WAS CHOSEN FOR THE FEDERAL URBAN WATER PILOT PROGRAM



Northeast Los Angeles Riverfront Collaborative

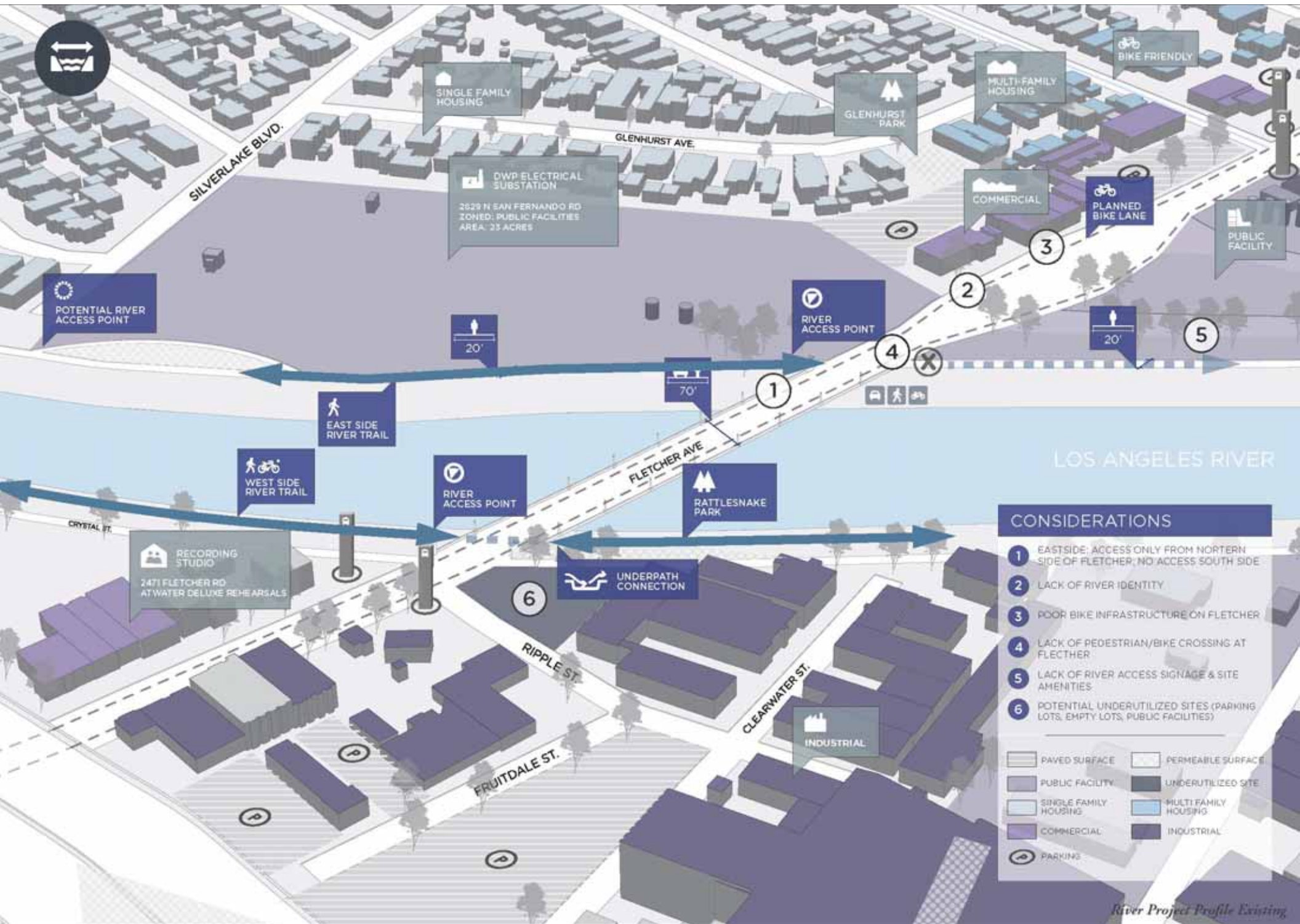
2012

NELA-RC \$2.25 MILLION COMMUNITY CHALLENGE PLANNING GRANT FROM THE FEDERAL PARTNERSHIP FOR SUSTAINABLE COMMUNITIES



IDENTIFYING A NEED

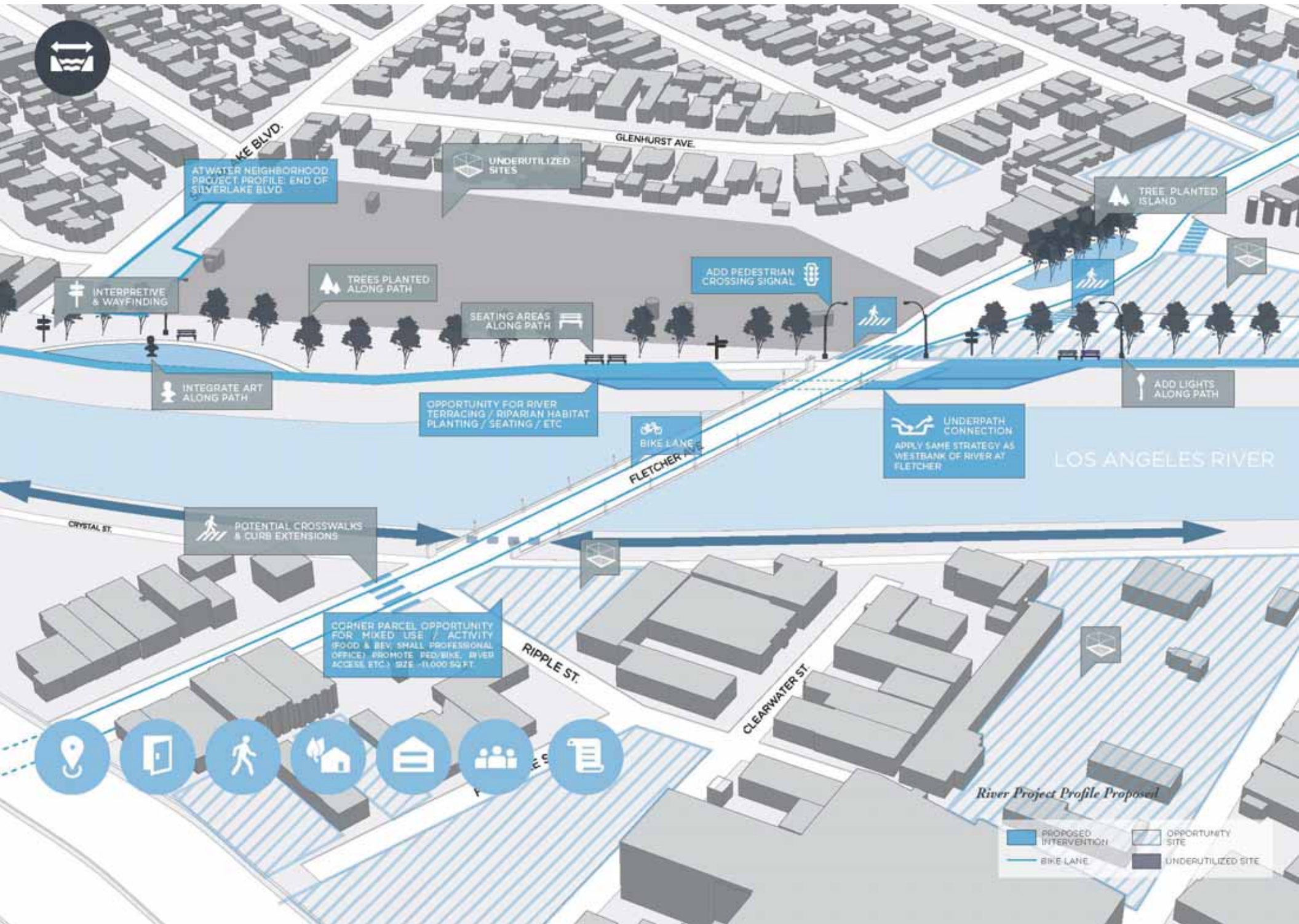
excerpt from NELA-RC website



CONSIDERATIONS

- 1 EASTSIDE; ACCESS ONLY FROM NORTHERN SIDE OF FLETCHER; NO ACCESS SOUTH SIDE
- 2 LACK OF RIVER IDENTITY
- 3 POOR BIKE INFRASTRUCTURE ON FLETCHER
- 4 LACK OF PEDESTRIAN/BIKE CROSSING AT FLETCHER
- 5 LACK OF RIVER ACCESS SIGNAGE & SITE AMENITIES
- 6 POTENTIAL UNDERUTILIZED SITES (PARKING LOTS, EMPTY LOTS, PUBLIC FACILITIES)

| | |
|-----------------------|----------------------|
| PAVED SURFACE | PERMEABLE SURFACE |
| PUBLIC FACILITY | UNDERUTILIZED SITE |
| SINGLE FAMILY HOUSING | MULTI FAMILY HOUSING |
| COMMERCIAL | INDUSTRIAL |
| PARKING | |



AT WATER NEIGHBORHOOD PROJECT PROFILE: END OF SILVERLAKE BLVD

UNDERUTILIZED SITES

TREES PLANTED ALONG PATH

SEATING AREAS ALONG PATH

ADD PEDESTRIAN CROSSING SIGNAL

TREE PLANTED ISLAND

INTERPRETIVE & WAYFINDING

INTEGRATE ART ALONG PATH

OPPORTUNITY FOR RIVER TERRACING / RIPARIAN HABITAT PLANTING / SEATING / ETC

BIKE LANE

UNDERPATH CONNECTION: APPLY SAME STRATEGY AS WESTBANK OF RIVER AT FLETCHER

ADD LIGHTS ALONG PATH

LOS ANGELES RIVER

POTENTIAL CROSSWALKS & CURB EXTENSIONS

CORNER PARCEL OPPORTUNITY FOR MIXED USE / ACTIVITY (FOOD & BEV, SMALL PROFESSIONAL OFFICE) PROMOTE PED/BIKE, RIVER ACCESS, ETC.) SIZE: ~1,000 SQ. FT.

River Project Profile Proposed

- PROPOSED INTERVENTION
- BIKE LANE
- OPPORTUNITY SITE
- UNDERUTILIZED SITE





2014

ECOSYSTEM RESTORATION STUDY US ARMY CORPS OF ENGINEERS RECOMMEND 1 BILLION IN FUNDING TO CONGRESS

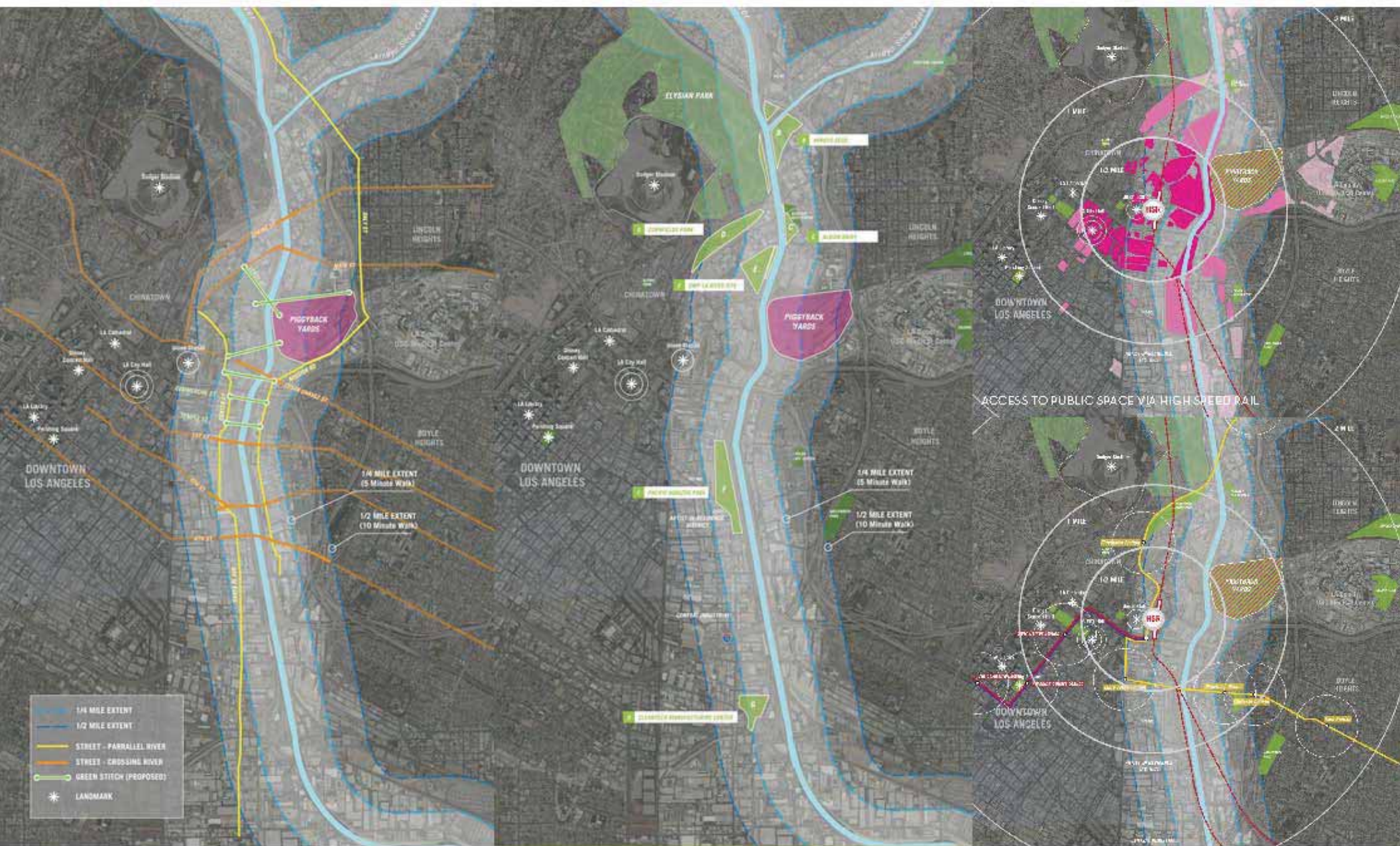


2009-2015+

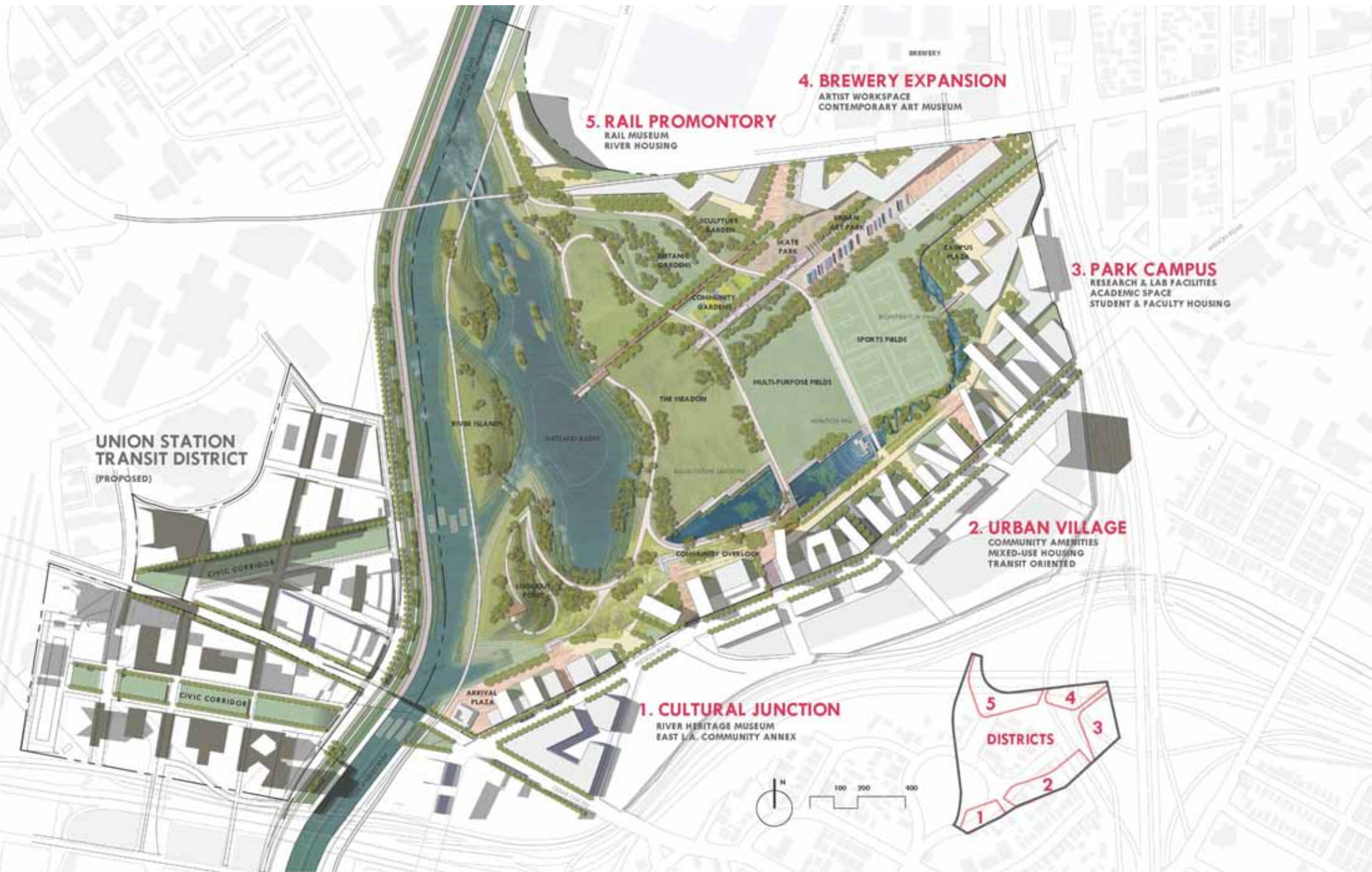
PIGGYBACK YARD CONCEPTUAL MASTER PLAN AND STUDY WATER, OPEN SPACE, CONNECTIVITY & COMMUNITY



TRANSFORMING A RAILYARD 125 ACRE PIGGYBACK RAIL YARD



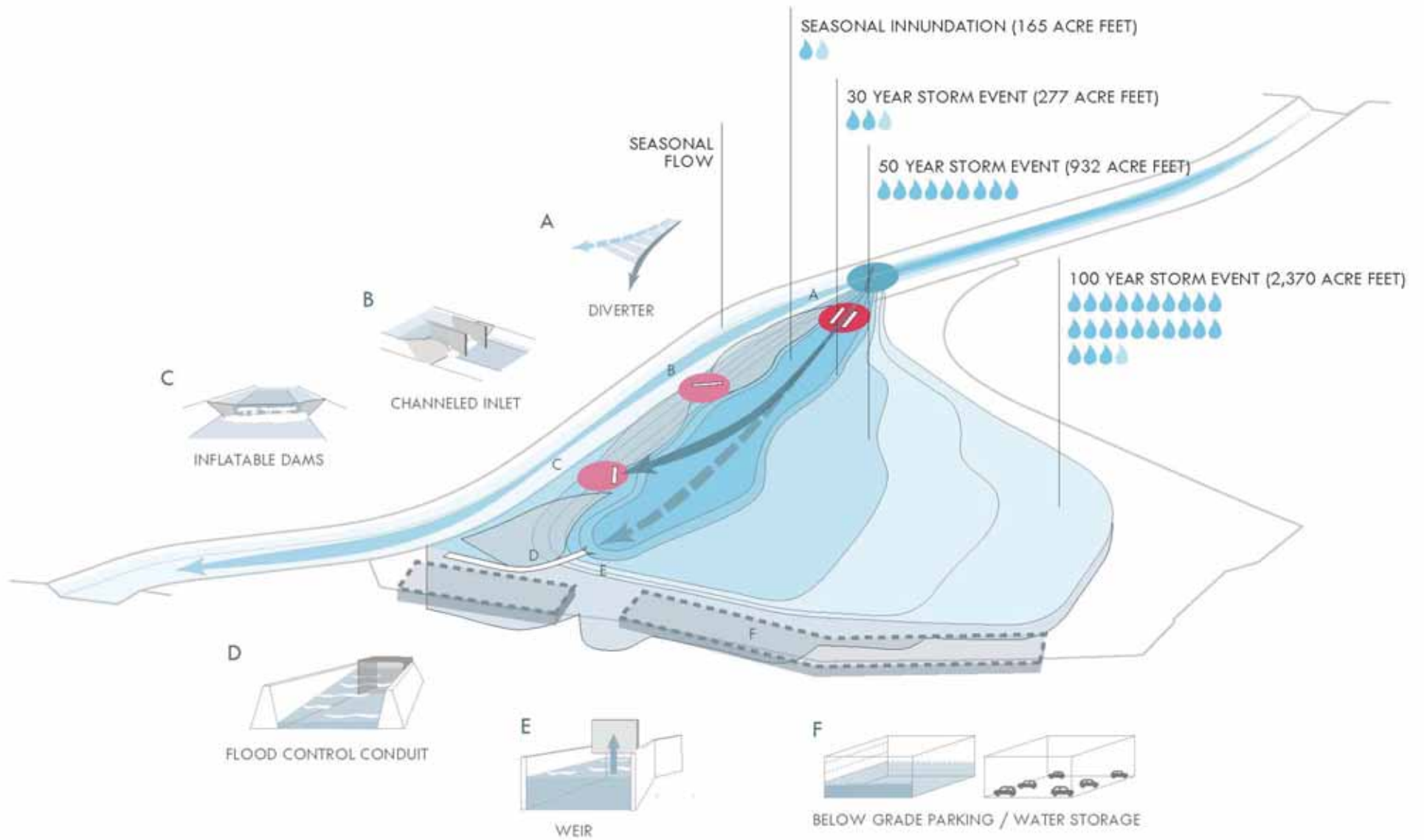
CREATING A RIVER DESTINATION ACCESS & CONNECTIVITY



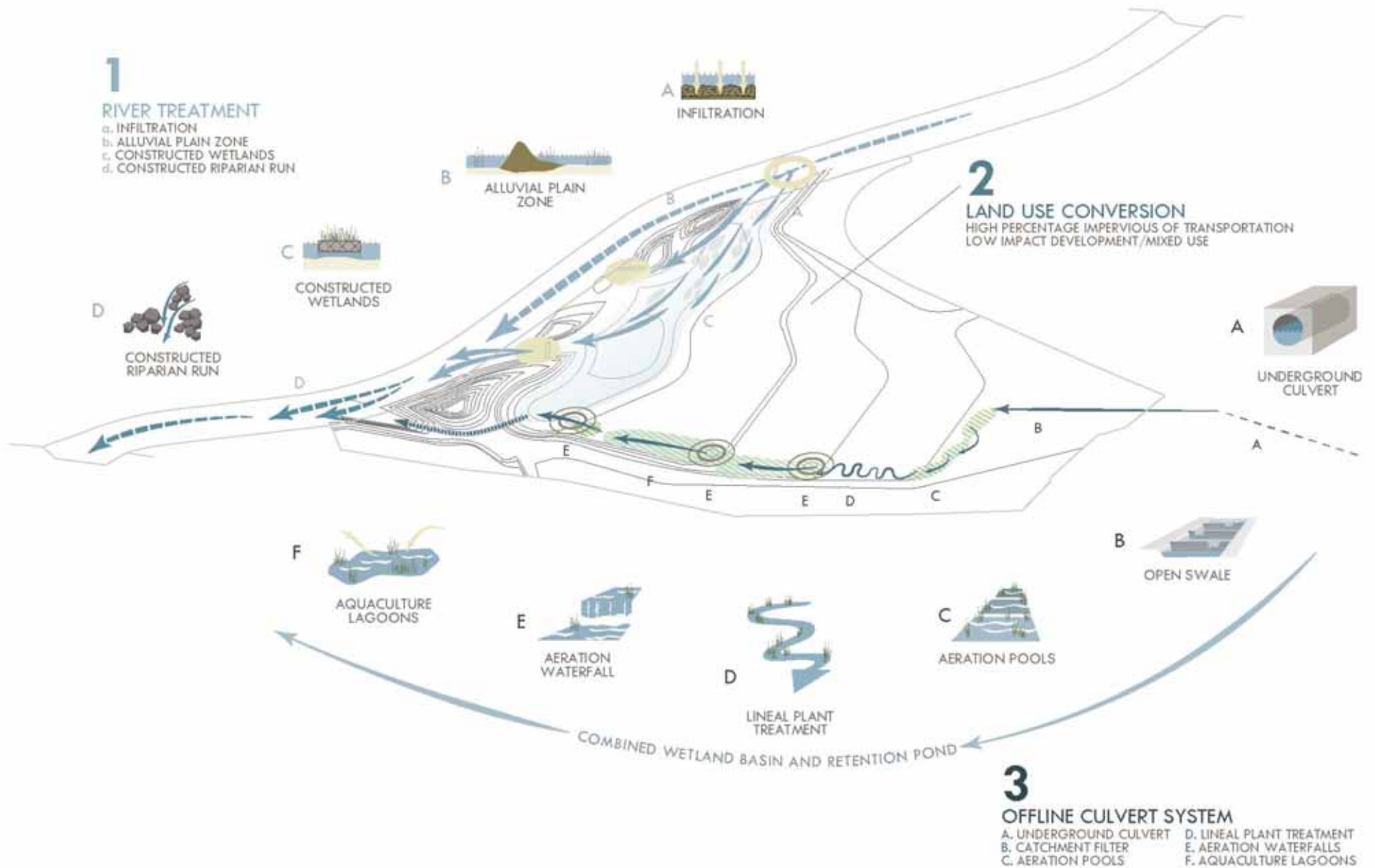
A MULTIBENEFIT SOLUTION WETLANDS RESTORATION, PARKLAND CREATION, FLOOD DETENTION & COMMUNITY DEVELOPMENT



URBAN VITALITY & RESILIENCE EMBRACING THE URBAN INDUSTRIAL CORRIDOR



STORM EVENT MANAGEMENT MAINTAINING HYDRAULIC PERFORMANCE DURING PEAK FLOWS



IMPROVED WATER QUALITY LAND USE CONVERSION, IMPROVED RIVER FUNCTIONALITY, & STORMWATER TREATMENT



SITE PROGRAMMING IN RELATION TO RIVER AND STORMWATER MANAGEMENT



THE PIGGYBACK YARD CONCEPTUAL MASTER PLAN

RECALIBRATE INFRASTRUCTURE TO HARNESS THE EFFECTS OF 20TH CENTURY URBANIZATION & CLIMATE CHANGE



THE PIGGYBACK YARD CONCEPTUAL MASTER PLAN

SUPPORT INTERACTIONS TO BRING PEOPLE AND NATURE TOGETHER



THE PIGGYBACK YARD CONCEPTUAL MASTER PLAN

A CATALYST FOR THE LA RIVER REGAINING ITS NATURAL CHARACTER WHILE ENHANCING NEIGHBORHOODS



THE PIGGYBACK YARD CONCEPTUAL MASTER PLAN

SHIFTING THE PARADIGM LARGE INFRASTRUCTURAL CHANGES PROVIDING LONG LASTING BENEFITS

MARKET IMPACT

Centrally located within the Los Angeles River watershed, the Bowtie Parks is a perfect site to create a pilot urban plant nursery. The nursery will be collectively managed by partnerships between government agencies (such as California State Parks), non-profit organizations (such as the Center for Urban Forests), non-profit research centers (such as the Center for Urban Forests), and academic institutions (such as USC, UCLA, and USC).

Local community members will be encouraged to engage in the project through employment and internship opportunities, and through outreach, education, and public workshops and seminars.

The nursery is designed to provide over 40,000 1-gallon plants each year for nearby parks, schools, business and public spaces, and to be used in conjunction with the Los Angeles River and the Los Angeles River Watershed.



EXPLORING NEW ECOLOGIES

OVER 85% OF THE U.S. POPULATION LIVES IN URBAN AREAS. CITIES ARE HUMAN'S NEW NATURAL HABITAT, MAKING THEM IMPORTANT AREAS TO UNDERSTAND AND ENHANCE.

URBAN ECOSYSTEMS ARE UNIQUE AND UNDER-RESEARCHED AREAS IN NEED OF MORE ATTENTION AND INTENTION. THIS NURSERY WILL PROVIDE A RESEARCH AND TESTING GROUND FOR EXPLORING HOW TO REBUILD CITIES INTO HEALTHIER AND MORE STABLE ENVIRONMENTS FOR ALL.

COLLECT

High quality seed from the Los Angeles River watershed.

PROPAGATE

TRANSFER

GROW

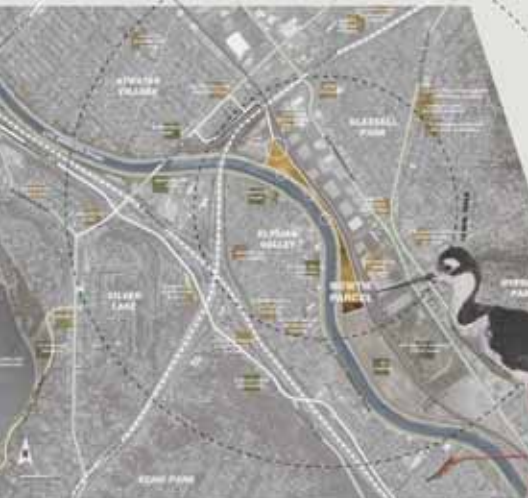
CONSERVE



AN ECO-REVOLUTIONARY LANDSCAPE

High quality seed from the Los Angeles River watershed. The nursery will be collectively managed by partnerships between government agencies (such as California State Parks), non-profit organizations (such as the Center for Urban Forests), non-profit research centers (such as the Center for Urban Forests), and academic institutions (such as USC, UCLA, and USC).

ENGAGE & EMPower ANGELENSOS



THE BOWTIE PARKS

The Bowtie Parks is an 18-acre abandoned ball park owned by California State Parks, that straddles along the banks of the Los Angeles River.

The site is located in the northern portion of Granddaddy Park, an 18-acre park in an area of neighborhoods including Granddaddy Park, Mission Village, Tinseltown, and the Los Angeles River.

Retaining the original industrial character, the Bowtie Parks projects residential, performance arts, public art, science, retail, community, entertainment and education, all with a focus on the connection between the built and natural environment.

THE WATER STORY

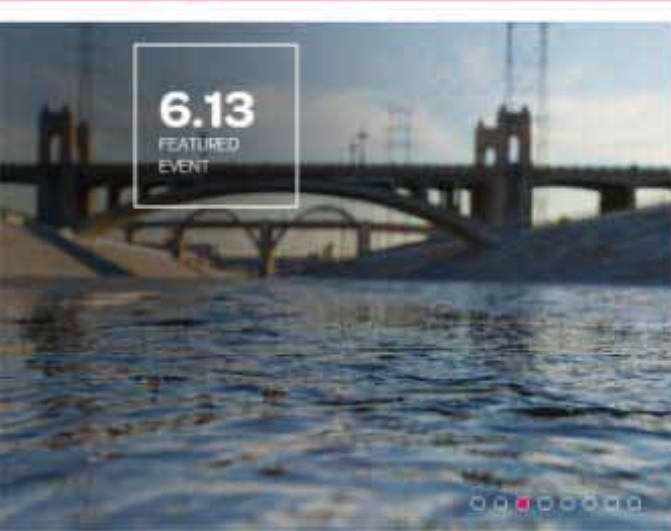
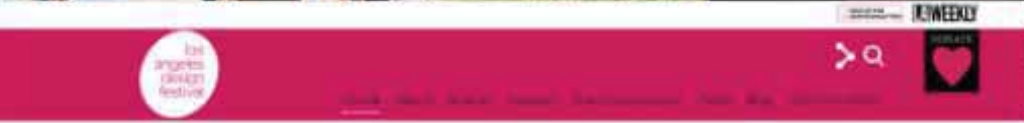
Over 2,200 storm drains during winter from the Los Angeles region into the Los Angeles River and out into the Pacific Ocean. A lot of these drains run underneath the Bowtie and valley runoff into the River.

The importance of water in Southern California is emphasized at the nursery.

Topography of the nursery is graded to create a rainwater harvesting system that collects runoff in the central low point. Large concrete stormwater pipes stacked vertically store the water for future use on site for plant irrigation. This creates a visible story to tell about the importance of the resource water.







Our River, Our City, Our Future

Get inspired with us at the best LA Series event with Carol Amato, Mia Lehrer, and Deborah Weirbach.

[LEARN MORE](#)



UPCOMING EVENTS

JUNE 10
Women Can Build
 10:00 AM - 12:00 PM
[VIEW](#) [REGISTER](#)
 Sponsored by
 De + Design

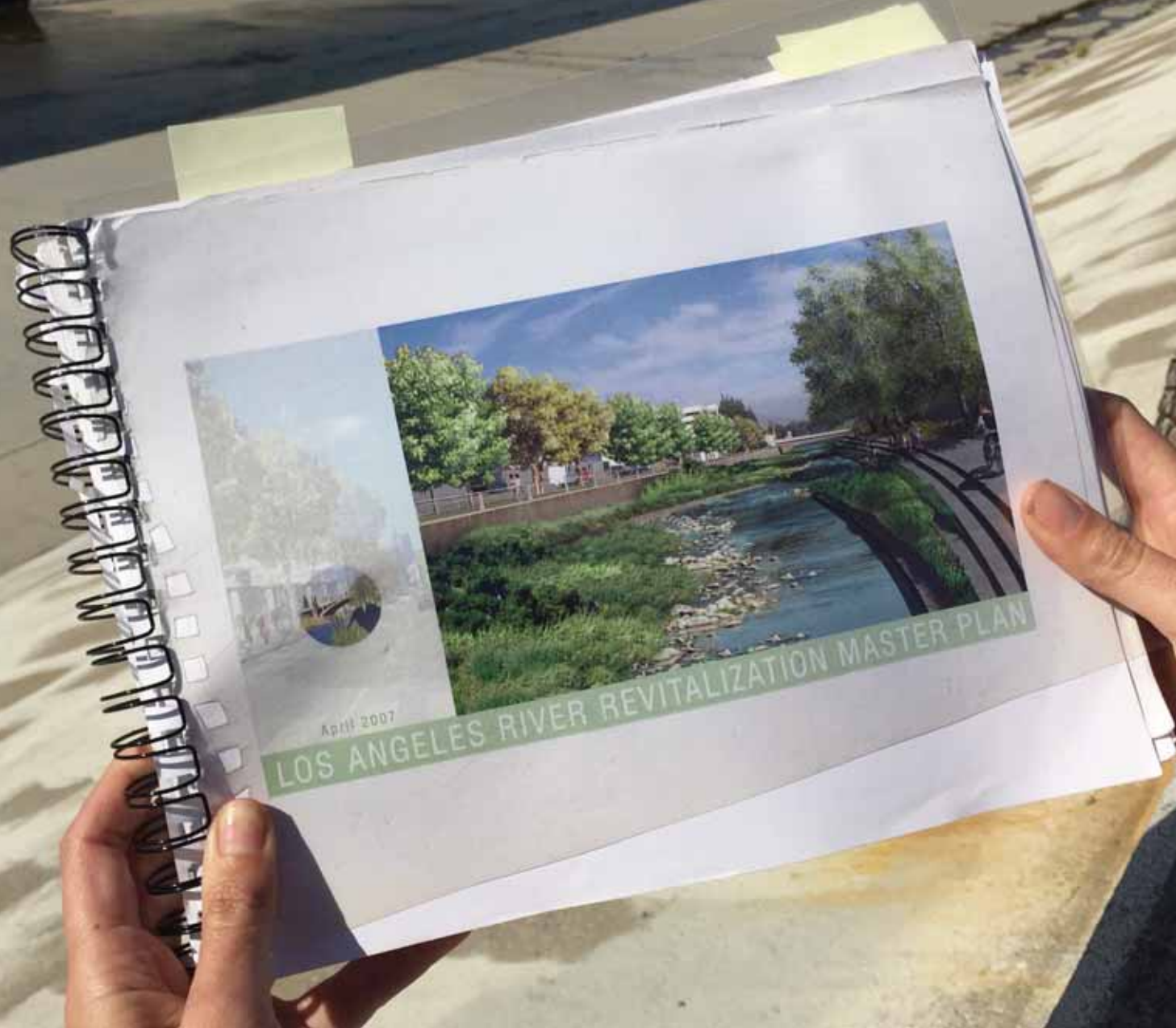
JUNE 11
Wine + Design at Mondrian LA
 5:00 PM - 8:00 PM
[VIEW](#) [REGISTER](#)
 Sponsored by
 De + Design

JUNE 12
Barnes&Noble Friday Night Wine Tasting
 5:00 PM - 8:00 PM
[VIEW](#) [REGISTER](#)
 Sponsored by
 De + Design

JUNE 13
De FUNKtion at Vermont Square Library
 10:00 AM - 12:00 PM
[VIEW](#) [REGISTER](#)
 Sponsored by
 De + Design

>> LARRMP AN EVOLVING FRAMEWORK

2007 LARRMP





AREA OF INFLUENCE:

> 500,000 PEOPLE

LENGTH OF RIVER:

12 MILES

1. STUDIO RIVERWALK
2. HEADWORKS WETLAND
3. VERDUGO JUNCTURE
4. ELYSIAN CONNECTION
5. LA UNION
6. EAST BANK MAKER'S DISTRICT



1. STUDIO RIVERWALK





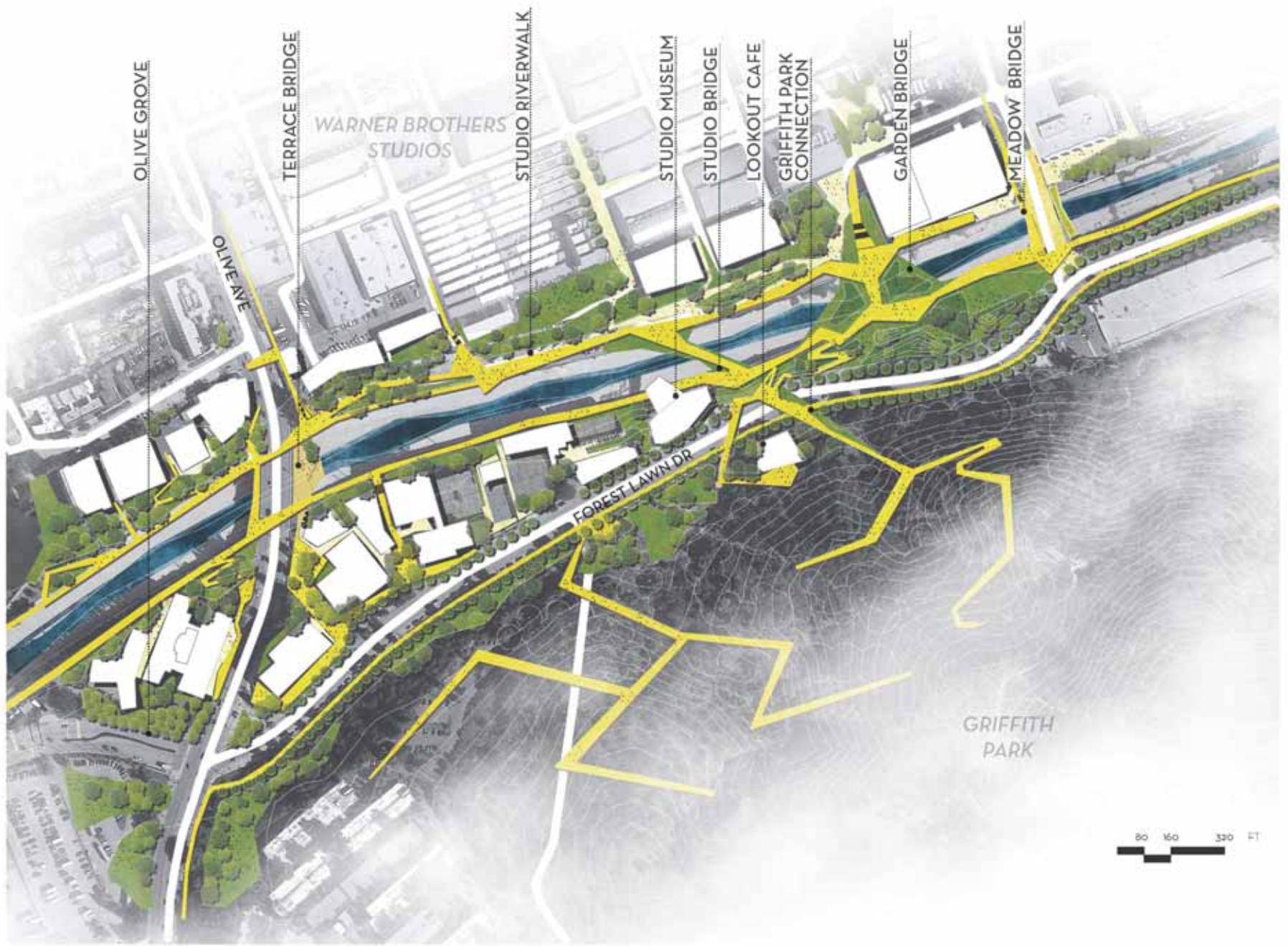
WARNER BROTHERS
STUDIOS

OLIVE AVE

SPORTS CENTER

FOREST LAWN DR

GRIFFITH
PARK



OLIVE GROVE

TERRACE BRIDGE

WARNER BROTHERS
STUDIOS

STUDIO RIVERWALK

STUDIO MUSEUM

STUDIO BRIDGE

LOOKOUT CAFE

GRIFFITH PARK
CONNECTION

GARDEN BRIDGE

MEADOW BRIDGE

OLIVE AVE

FOREST LAWN DR

GRIFFITH
PARK

80 160 320 FT



OLIVE AVE

FOREST LAWN DR

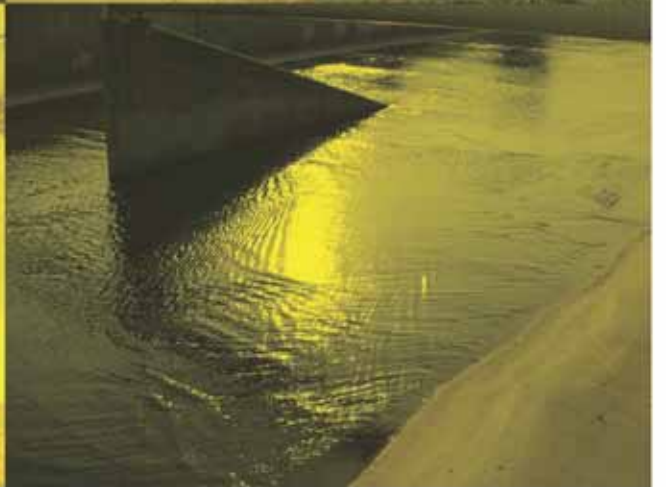
MODEL BOUNDARY

80 160 320 FT

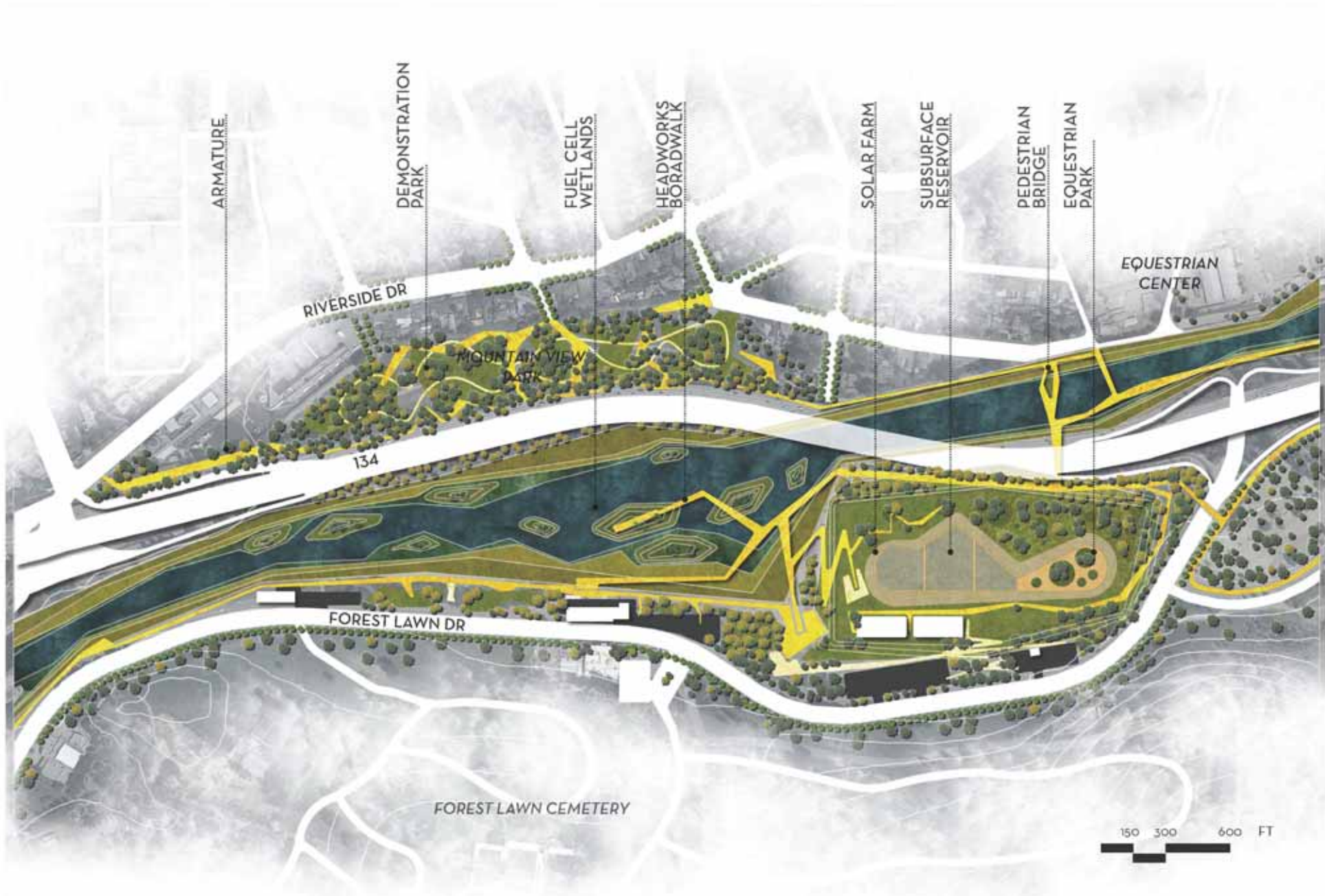




2. HEADWORKS WETLANDS







ARMATURE

DEMONSTRATION PARK

RIVERSIDE DR

FUEL CELL WETLANDS

HEADWORKS BORADWALK

SOLAR FARM

SUBSURFACE RESERVOIR

PEDESTRIAN BRIDGE

EQUESTRIAN PARK

EQUESTRIAN CENTER

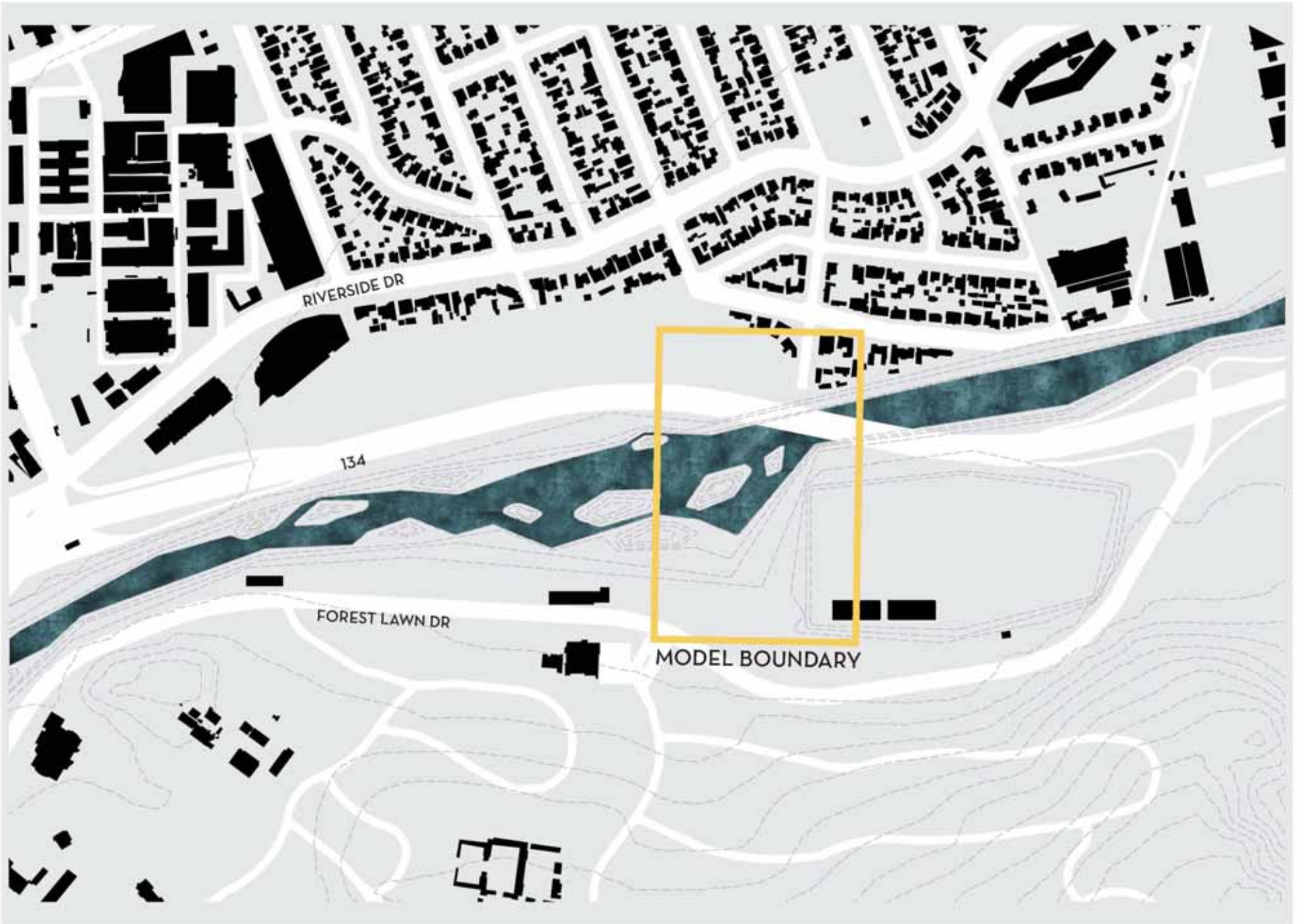
FOREST LAWN CEMETERY

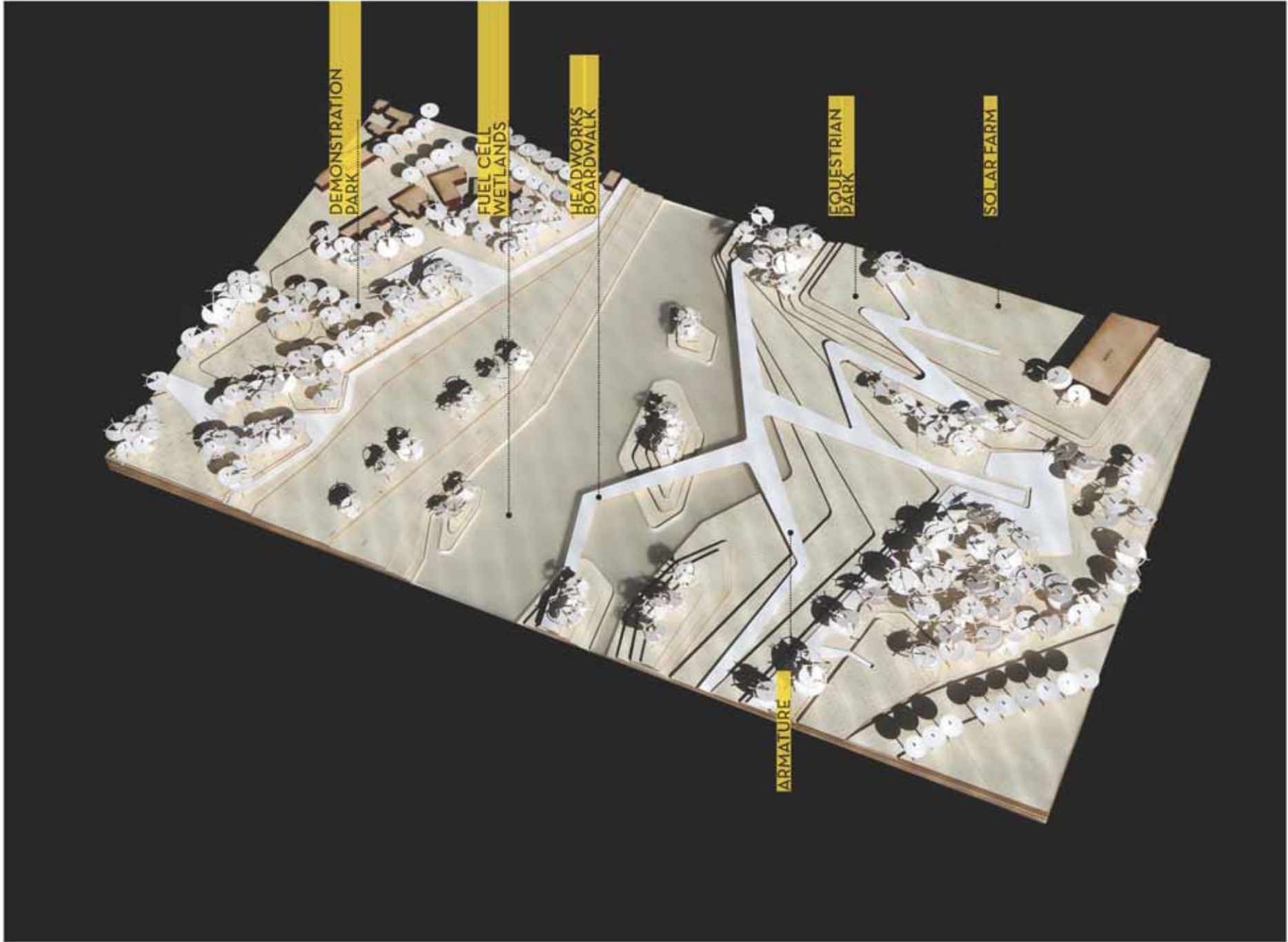
134

FOREST LAWN DR

150 300 600 FT

600





DEMONSTRATION
PARK

FUEL CELL
WETLANDS

HEADWORKS
BOARDWALK

EQUESTRIAN
PARK

SOLAR FARM

ARMATURE



3. VERDUGO JUNCTURE





WATER RECLAMATION
PLANT

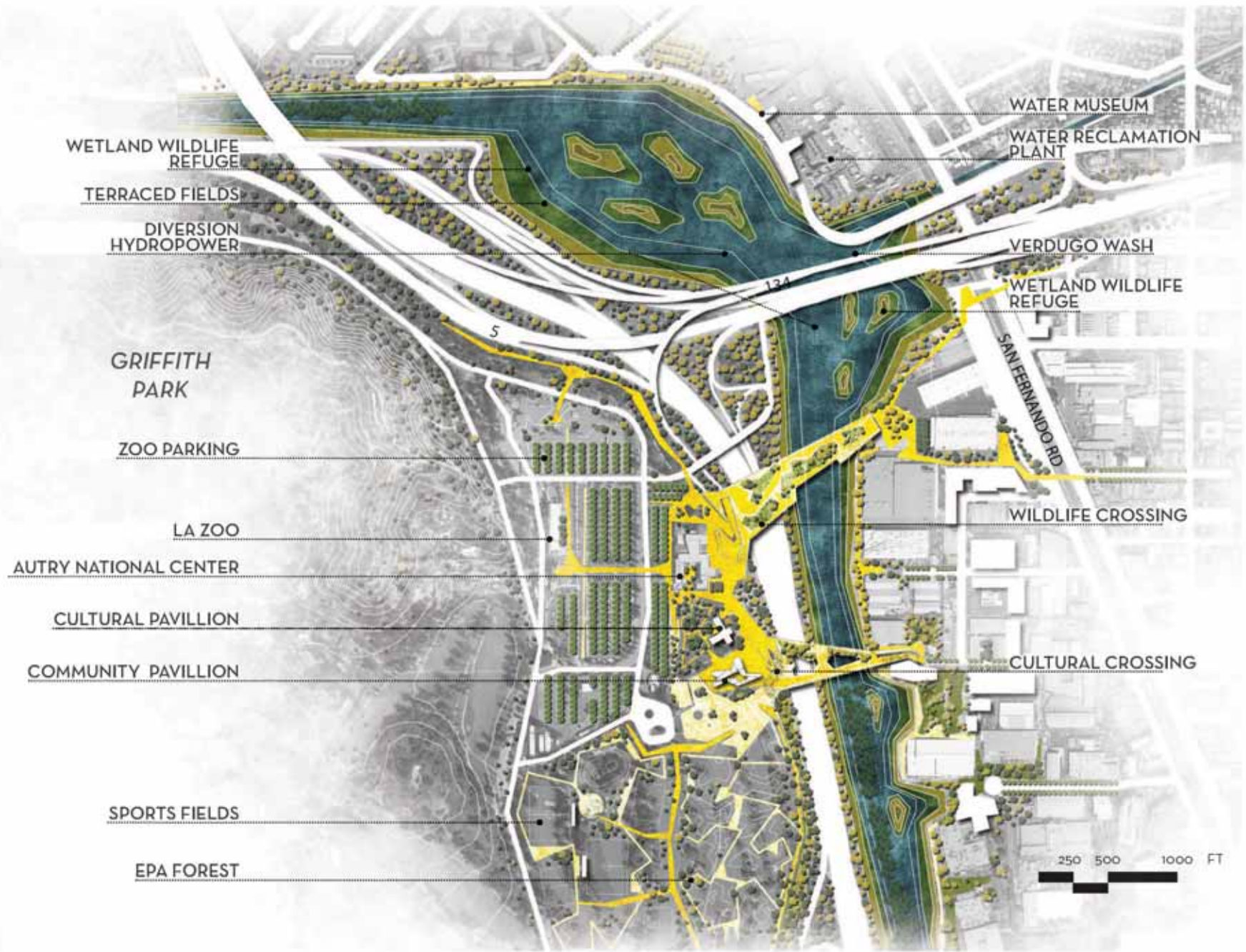
VERDUGO WASH

GRIFFITH
PARK

134

SAN FERNANDO RD

WILSON & HARDING
GOLF COURSE



WETLAND WILDLIFE REFUGE

TERRACED FIELDS

DIVERSION HYDROPOWER

GRIFFITH PARK

ZOO PARKING

LA ZOO

AUTRY NATIONAL CENTER

CULTURAL PAVILLION

COMMUNITY PAVILLION

SPORTS FIELDS

EPA FOREST

WATER MUSEUM

WATER RECLAMATION PLANT

VERDUGO WASH

WETLAND WILDLIFE REFUGE

SAN FERNANDO RD

WILDLIFE CROSSING

CULTURAL CROSSING





MODEL BOUNDARY

SAN FERNANDO RD

5

00 1000 FT



CULURAL CROSSING

COMMUNITY PAVILLION

CULTURAL PAVILLION

AUTRY NATIONAL CENTER

EPA FOREST

