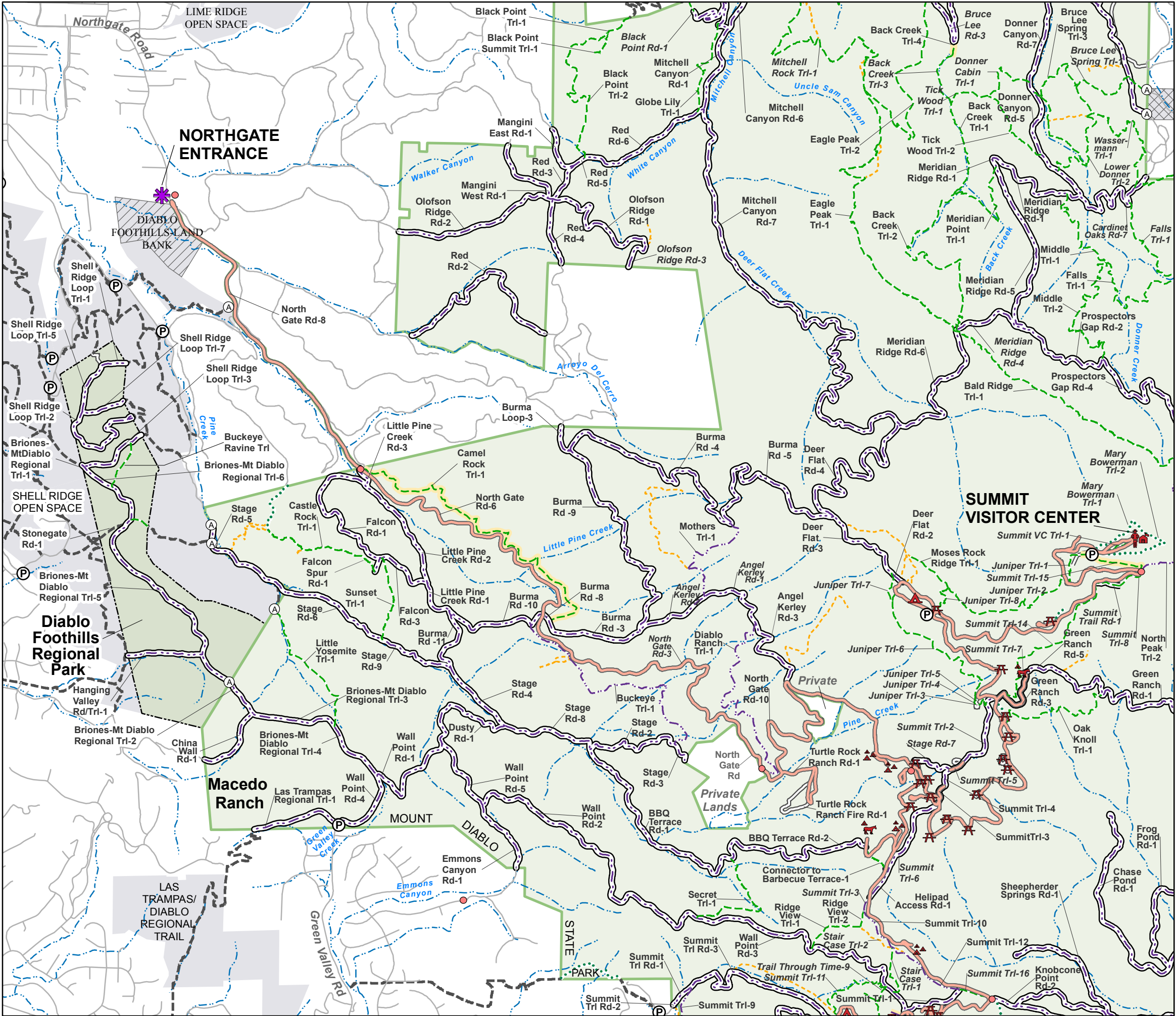


Existing Roads and Trails



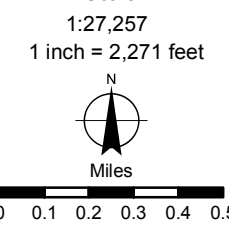
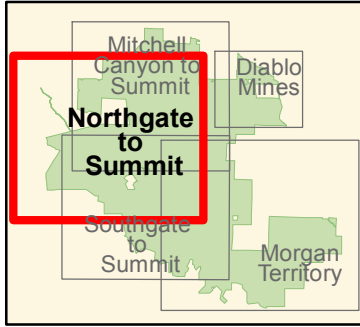
NORTHGATE TO SUMMIT

Current Road & Trail Network by Category and Use Designation

- Local Roads
- State Park Rd, Hike and Horse
- State Park Rd, Hike, Bike and Horse
- State Park Rd, Undetermined
- State Park Rd, No Vehicles, Hike and Horse
- State Park Rd, No Vehicles, Hike, Bike and Horse
- ... State Park Trl, Hike
- ... State Park Trl, Hike and Horse
- ... State Park Trl, Hike, Bike and Horse
- ... State Park Trl, Not Determined
- - - Non-system routes
- - - Other Trails
- Paved park roads

- Museum/Visitor center
- Picnic Areas
- Developed Camp Area
- Group Camp Area
- Horse Camp Area
- Mt Diablo State Park
- CSP Land Operated by EBRPD
- Parking
- Limited Parking
- Map Page Location
- Access Pts from Public Lands
- Intermittent Stream
- Other Public Lands
- Public Access Limits
- No Access
- Restricted Access

Mileage of Roads, Trails by Designated Use in Northgate Area:
 Road: Hike, Horse: 1.8 mi.
 Road: Hike, Bike, Horse: 42.9
 Trail: Hike: 0.7
 Trail: Hike, Horse: 24.3
 Trail: Hike, Bike, Horse: 3.2
 Non-system: 6.1



Mount Diablo State Park Road and Trail Management Plan

NOTES:
 Parcel boundaries are approximate and should not be considered legal descriptions. Maps are intended for study purposes only.

| | | |
|--|--|--|
| <p>FACILITIES MANAGEMENT DIVISION</p> | <p>Date: 9/24/2015 Sources: Calif. Dept. of Parks & Recreation Parking and Trailheads: Save Mount Diablo Other Public Lands: GreenInfo, Inc.</p> | |
|--|--|--|