

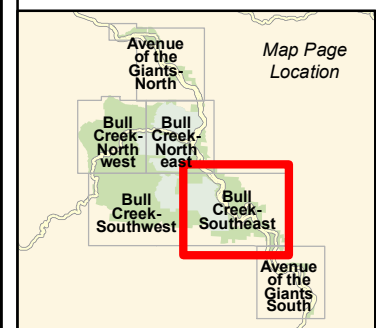
# Maintenance Recommendations

## BULL CREEK - SOUTHEAST

- Unsustainable. Remove, Reconstruct/Re-Engineer, and/or Reroute
- Sustainable with Reconstruction/ Re-engineering
- Sustainable with Maintenance
- ⋯ Non-system route
- User-created Trail Intersections. Remove Trail and Rehabilitate Vegetation.
- Proposed Re-routes on Existing Trails

*Note: Recommendations are made by road or trail segment. Segment recommendations may apply to only a portion of the segment (e.g. a road with a "Remove, Reconstruct/Reengineer, and Reroute" recommendation may include locations within the trail segment requiring maintenance, locations requiring reconstruction/reengineering, and locations requiring reroutes).*

- Other Reference Layers:
- Humboldt Redwoods State Park
  - Wilderness / Natural Preserve
  - Paved State Park Road
  - Highways
  - Local Road
  - ▲ Group Camp Area
  - ▲ Developed Camp Area
  - Streams
  - City Points
  - P Parking



Scale  
1:37,450  
1 inch = 3,121 feet

N

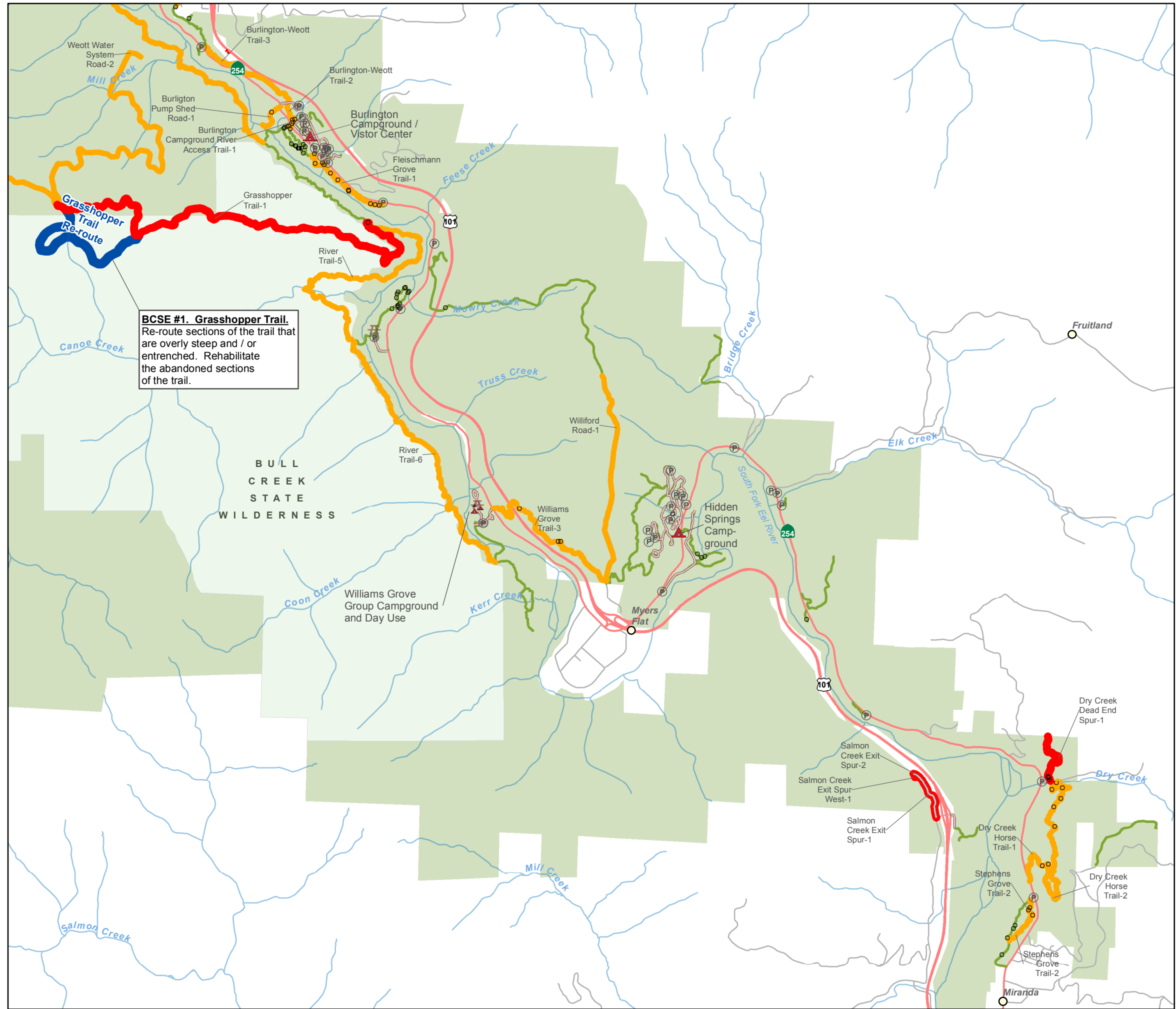
Miles  
0 0.1 0.2

## Humboldt Redwoods State Park Road and Trail Management Plan

**NOTES:**  
Parcel boundaries are approximate and should not be considered legal descriptions. Maps are intended for study purposes only.

**CALIFORNIA STATE PARKS:  
NORTH COAST REDWOODS DISTRICT, & FACILITIES MANAGEMENT DIVISION**

Date: 4/3/2017  
Sources:  
Calif. Dept. of Parks & Recreation,  
Other Public Lands:  
GreenInfo, Inc.



**BCSE #1. Grasshopper Trail.**  
Re-route sections of the trail that are overly steep and / or entrenched. Rehabilitate the abandoned sections of the trail.