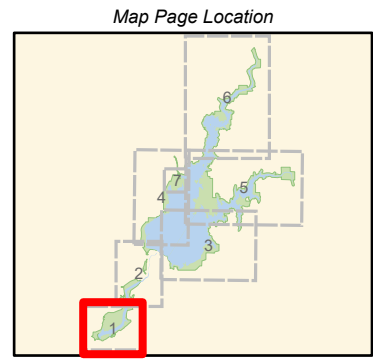


Potential Significance to Water Resources and Drainage Structure Condition

SOUTH LAKE NATOMA NIMBUS DAM

<p>Potential Significance to Water Resources Point</p> <ul style="list-style-type: none"> ● Most Significant ● High Significance ● Moderate Significance ○ Low Significance ○ Least Significant 	<p>Potential Significance to Water Resources Line</p> <ul style="list-style-type: none"> █ Most Significant █ High Significance █ Moderate Significance █ Low Significance █ Least Significant 	<p>Trails</p> <ul style="list-style-type: none"> ●●● Unpaved Park Trails ●●● Paved Park Trails --- Trail on Roadbed --- No Public Access --- Non System Route --- Other Agency Trail 	<p>Roads</p> <ul style="list-style-type: none"> █ Unpaved Park Service Roads █ Paved Park Service Roads █ Unpaved Public Vehicular Roads █ Paved Public Vehicular Roads
<p>Drainage Structure Condition Index Point</p> <ul style="list-style-type: none"> ○ Critical Problems ○ High Problems ○ Moderate Problems 	<p>Drainage Structure Condition Index Line</p> <ul style="list-style-type: none"> █ High █ Moderate 	<p>Other Agency Service Roads</p> <ul style="list-style-type: none"> █ Hike, Bike and Horse █ Not Designated 	<p>Other Agency Trails</p> <ul style="list-style-type: none"> █ County █ Folsom Lake State Recreation Area and Folsom Powerhouse State Historic Park █ CA Protected Lands █ No Public Access
<p>Ⓟ Parking Lot</p> <p>Ⓜ Picnic Area</p> <p>— River</p> <p>— Intermittent Stream</p> <p>■ Waterbodies</p>			



Page 1 of 7

Scale
1:18,080

NOTES:
Parcel boundaries are approximate and should not be considered legal descriptions. Maps are intended for study purposes only.

CALIFORNIA STATE PARKS GOLD FIELDS DISTRICT & STATEWIDE PLANNING & RECREATION SERVICES

Sources: California Dept. of Parks & Recreation; GreenInfo, Inc.; USGS

Date: 12/2/2021



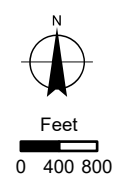
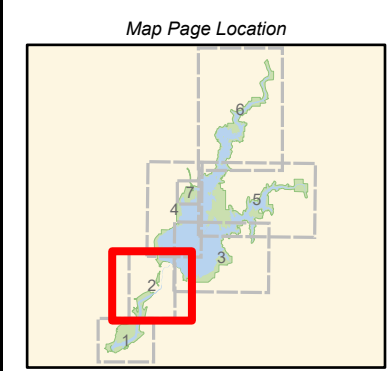
Folsom Area State Parks Road and Trail Management Plan



Potential Significance to Water Resources and Drainage Structure Condition

UPPER LAKE NATOMA TO FOLSOM DAM

- | | |
|--|---|
| <p>Potential Significance to Water Resources Point</p> <ul style="list-style-type: none"> ● Most Significant ● High Significance ● Moderate Significance ○ Low Significance ○ Least Significant <p>Potential Significance to Water Resources Line</p> <ul style="list-style-type: none"> █ Most Significant █ High Significance █ Moderate Significance █ Low Significance █ Least Significant <p>Drainage Structure Condition Index Point</p> <ul style="list-style-type: none"> ○ Critical Problems ○ High Problems ○ Moderate Problems <p> <ul style="list-style-type: none"> Ⓟ Parking Lot Ⓜ Picnic Area Ⓜ Camp Area, Tent Only Ⓜ Group Camp Area — River — Intermittent Stream ■ Waterbodies </p> | <p>Trails</p> <ul style="list-style-type: none"> ●●● Unpaved Park Trails ●●● Paved Park Trails — Trail on Roadbed █ Accessible Trail — No Public Access — Non System Route — Other Agency Trail <p>Roads</p> <ul style="list-style-type: none"> █ Unpaved Park Service Roads █ Paved Park Service Roads █ Unpaved Public Vehicular Roads █ Paved Public Vehicular Roads <p>Other Agency Service Roads</p> <ul style="list-style-type: none"> █ Hike, Bike and Horse █ Not Designated <p>Drainage Structure Condition Index Line</p> <ul style="list-style-type: none"> █ High █ Moderate █ County █ Folsom Lake State Recreation Area and Folsom Powerhouse State Historic Park █ Folsom Dam Operations █ CA Protected Lands █ No Public Access |
|--|---|



NOTES:
Parcel boundaries are approximate and should not be considered legal descriptions. Maps are intended for study purposes only.

CALIFORNIA STATE PARKS GOLD FIELDS DISTRICT & STATEWIDE PLANNING & RECREATION SERVICES

Sources: California Dept. of Parks & Recreation; GreenInfo, Inc.; USGS

Date: 12/2/2021



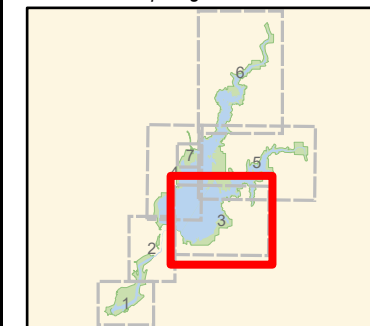
Folsom Area State Parks Road and Trail Management Plan

Potential Significance to Water Resources and Drainage Structure Condition

BROWNS RAVINE

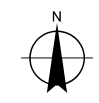
- | | |
|---|---|
| <p>Potential Significance to Water Resources Point</p> <ul style="list-style-type: none"> ● Most Significant ● High Significance ● Moderate Significance ○ Low Significance ○ Least Significant <p>Potential Significance to Water Resources Line</p> <ul style="list-style-type: none"> █ Most Significant █ High Significance █ Moderate Significance █ Low Significance █ Least Significant <p>Drainage Structure Condition Index Point</p> <ul style="list-style-type: none"> ○ Critical Problems ○ High Problems ○ Moderate Problems <p> <ul style="list-style-type: none"> Ⓟ Parking Lot Ⓜ Picnic Area — River - - Intermittent Stream ■ Waterbodies </p> | <p>Trails</p> <ul style="list-style-type: none"> ●●● Unpaved Park Trails - - Trail on Roadbed - - - No Public Access - - - Non System Route - - - Other Agency Trail <p>Roads</p> <ul style="list-style-type: none"> █ Unpaved Park Service Roads █ Paved Park Service Roads █ Unpaved Public Vehicular Roads █ Paved Public Vehicular Roads <p>Other Agency Service Roads</p> <ul style="list-style-type: none"> █ Hike, Bike and Horse █ Not Designated <p>Drainage Structure Condition Index Line</p> <ul style="list-style-type: none"> █ High █ Moderate <p> <ul style="list-style-type: none"> █ County █ Folsom Lake State Recreation Area and Folsom Powerhouse State Historic Park █ Folsom Dam Operations █ Natural Preserves █ CA Protected Lands </p> |
|---|---|

Map Page Location



Page 3 of 7

Scale
1:30,950



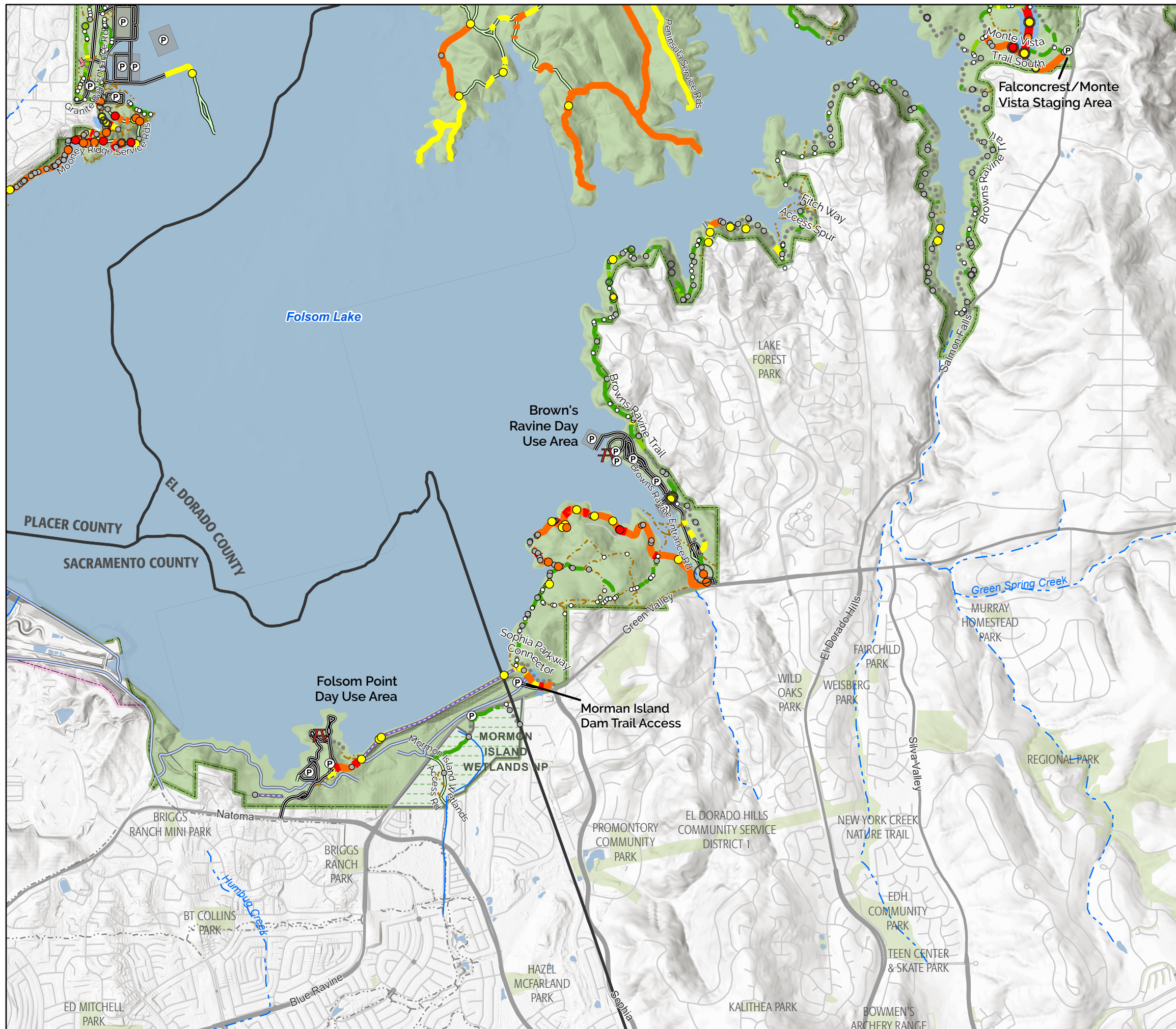
Feet
0 400800

NOTES:
Parcel boundaries are approximate and should not be considered legal descriptions. Maps are intended for study purposes only.

CALIFORNIA STATE PARKS GOLD FIELDS DISTRICT & STATEWIDE PLANNING & RECREATION SERVICES

Sources: California Dept. of Parks & Recreation; GreenInfo, Inc.; USGS

Date: 12/2/2021

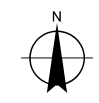
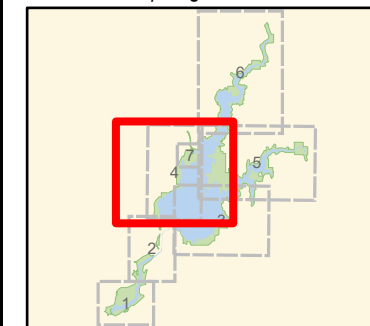


Potential Significance to Water Resources and Drainage Structure Condition

BEALS POINT / GRANITE BAY

- | | |
|--|--|
| <p>Potential Significance to Water Resources Point</p> <ul style="list-style-type: none"> ● Most Significant ● High Significance ● Moderate Significance ○ Low Significance ○ Least Significant | <p>Trails</p> <ul style="list-style-type: none"> ●●● Unpaved Park Trails ●●● Paved Park Trails ■ Accessible Trail - - - No Public Access - - - Non System Route - - - Other Agency Trail |
| <p>Potential Significance to Water Resources Line</p> <ul style="list-style-type: none"> ■ Most Significant ■ High Significance ■ Moderate Significance ■ Low Significance ■ Least Significant | <p>Roads</p> <ul style="list-style-type: none"> ■ Unpaved Park Service Roads ■ Paved Park Service Roads ■ Unpaved Public Vehicular Roads ■ Paved Public Vehicular Roads <p>Other Agency Service Roads</p> <ul style="list-style-type: none"> ■ Hike, Bike and Horse ■ Not Designated |
| <p>Drainage Structure Condition Index Point</p> <ul style="list-style-type: none"> ○ Critical Problems ○ High Problems ○ Moderate Problems | <p>Drainage Structure Condition Index Line</p> <ul style="list-style-type: none"> ■ High ■ Moderate |
| <ul style="list-style-type: none"> Ⓟ Parking Lot Ⓜ Picnic Area Ⓜ Camp Area, Tent Only Ⓜ Camp Area with Hookups Ⓜ Developed Camp Area — River — Intermittent Stream ■ Waterbodies | <ul style="list-style-type: none"> ■ County ■ Folsom Lake State Recreation Area and Folsom Powerhouse State Historic Park ■ Natural Preserves ■ CA Protected Lands ■ Restricted Access |

Map Page Location

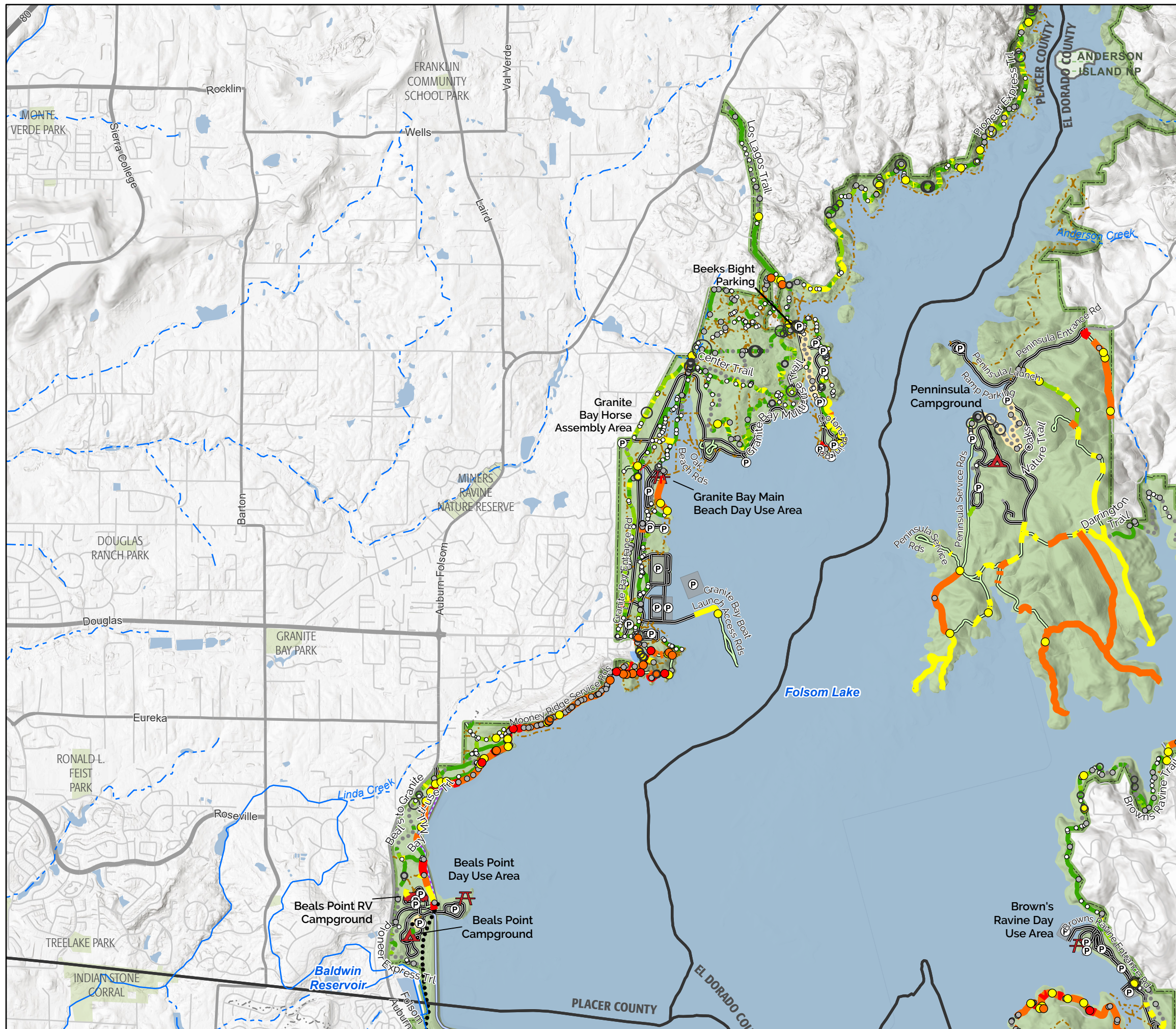


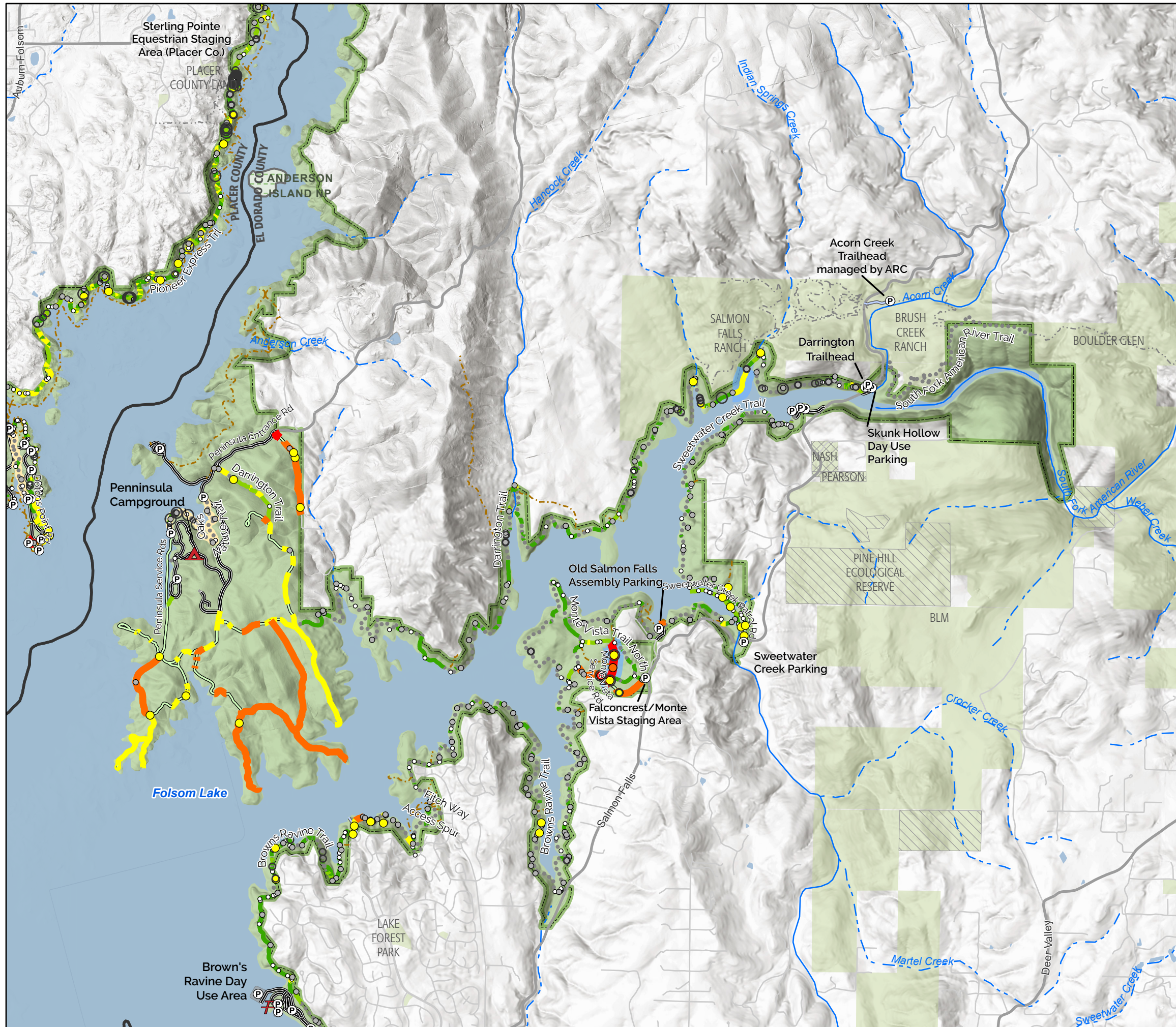
NOTES:
Parcel boundaries are approximate and should not be considered legal descriptions. Maps are intended for study purposes only.

CALIFORNIA STATE PARKS GOLD FIELDS DISTRICT & STATEWIDE PLANNING & RECREATION SERVICES

Sources: California Dept. of Parks & Recreation; GreenInfo, Inc.; USGS

Date: 12/2/2021

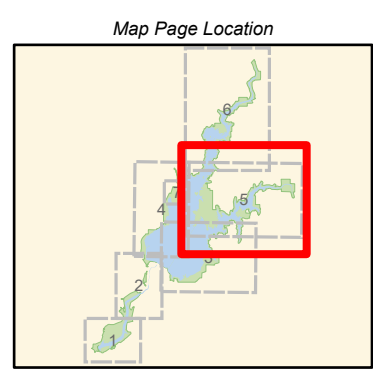




Potential Significance to Water Resources and Drainage Structure Condition

SOUTH FORK AMERICAN RIVER

- | | |
|--|--|
| <p>Potential Significance to Water Resources Point</p> <ul style="list-style-type: none"> ● Most Significant ● High Significance ● Moderate Significance ● Low Significance ● Least Significant | <p>Trails</p> <ul style="list-style-type: none"> ●●● Unpaved Park Trails ●●● Paved Park Trails --- Trail on Roadbed --- Accessible Trail --- Non System Route --- Other Agency Trail |
| <p>Potential Significance to Water Resources Line</p> <ul style="list-style-type: none"> ■ Most Significant ■ High Significance ■ Moderate Significance ■ Low Significance ■ Least Significant | <p>Roads</p> <ul style="list-style-type: none"> --- Unpaved Park Service Roads --- Unpaved Public Vehicular Roads --- Paved Public Vehicular Roads <p>Other Agency Service Roads</p> <ul style="list-style-type: none"> --- Hike, Bike and Horse --- Not Designated |
| <p>Drainage Structure Condition Index Point</p> <ul style="list-style-type: none"> ○ Critical Problems ○ High Problems ○ Moderate Problems | <p>Drainage Structure Condition Index Line</p> <ul style="list-style-type: none"> ■ High ■ Moderate |
| <ul style="list-style-type: none"> Ⓟ Parking Lot Ⓟ Picnic Area Ⓟ Developed Camp Area --- River --- Intermittent Stream ■ Waterbodies | <ul style="list-style-type: none"> ■ County ■ Folsom Lake State Recreation Area and Folsom Powerhouse State Historic Park ■ Natural Preserves ■ CA Protected Lands ■ No Public Access ■ Restricted Access |



Page 5 of 7

Scale
1:38,000

Feet
0 40 800

NOTES:
Parcel boundaries are approximate and should not be considered legal descriptions. Maps are intended for study purposes only.

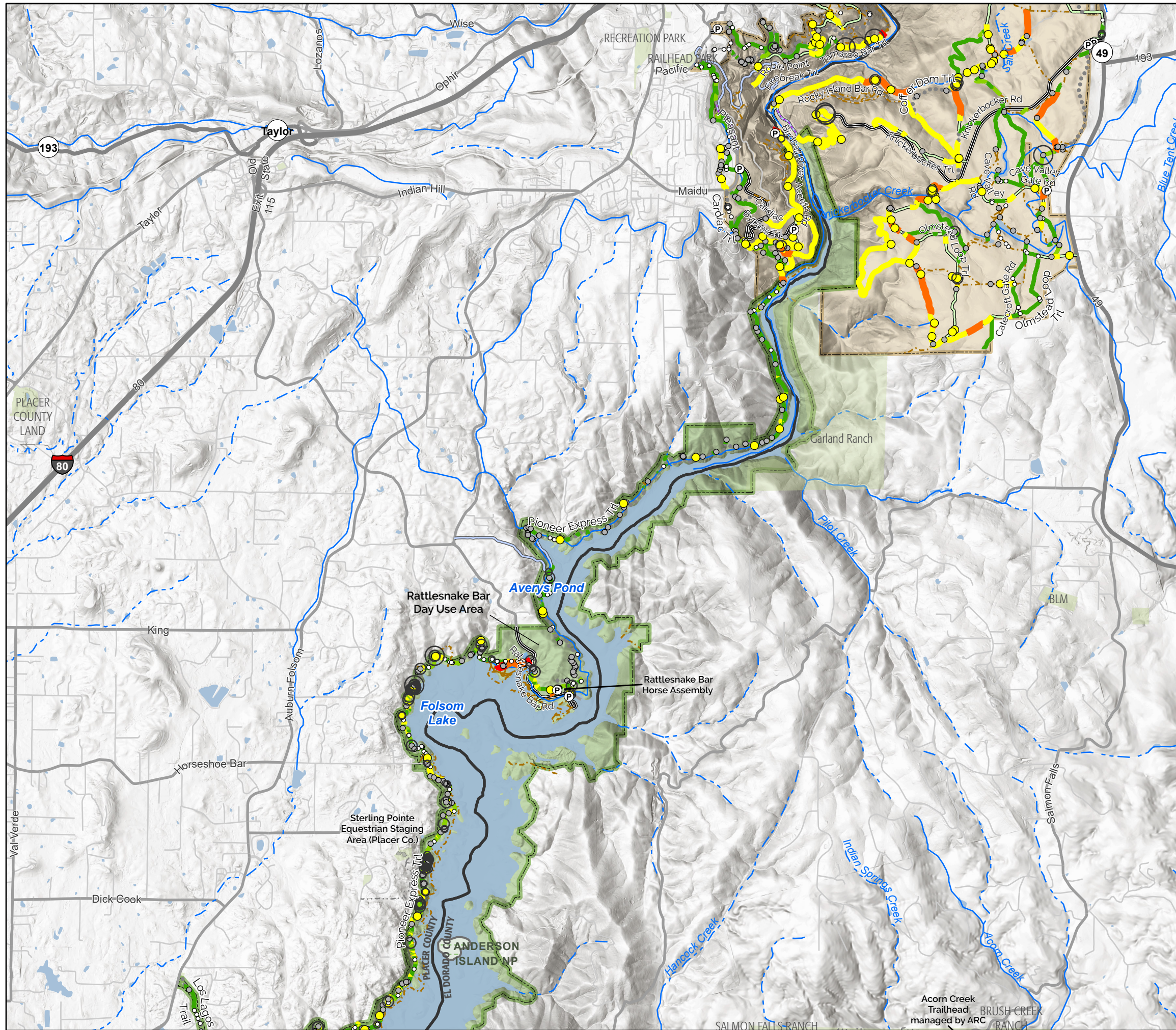
CALIFORNIA STATE PARKS GOLD FIELDS DISTRICT & STATEWIDE PLANNING & RECREATION SERVICES

Sources: California Dept. of Parks & Recreation; GreenInfo, Inc.; USGS

Date: 12/2/2021



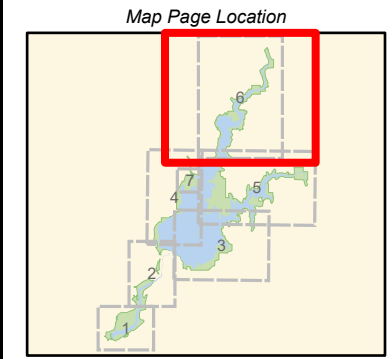
Folsom Area State Parks Road and Trail Management Plan



Potential Significance to Water Resources and Drainage Structure Condition

NORTH FORK AMERICAN RIVER

- | | | | |
|--|---|---|--|
| <p>Potential Significance to Water Resources Point</p> <ul style="list-style-type: none"> ● Most Significant ● High Significance ● Moderate Significance ● Low Significance ● Least Significant | <p>Potential Significance to Water Resources Line</p> <ul style="list-style-type: none"> ■ Most Significant ■ High Significance ■ Moderate Significance ■ Low Significance ■ Least Significant | <p>Trails</p> <ul style="list-style-type: none"> ●●● Unpaved Park Trails --- Non System Route --- Other Agency Trail | <p>Roads</p> <ul style="list-style-type: none"> — Unpaved Park Service Roads — Paved Park Service Roads — Unpaved Public Vehicular Roads — Paved Public Vehicular Roads |
| <p>Drainage Structure Condition Index Point</p> <ul style="list-style-type: none"> ○ Critical Problems ○ High Problems ○ Moderate Problems | <p>Drainage Structure Condition Index Line</p> <ul style="list-style-type: none"> ■ High ■ Moderate | <p>Other Agency Service Roads</p> <ul style="list-style-type: none"> — Hike, Bike and Horse — Not Designated | <p>County</p> <ul style="list-style-type: none"> ■ Folsom Lake State Recreation Area and Folsom Powerhouse State Historic Park ■ Auburn State Recreation Area ■ Natural Preserves ■ CA Protected Lands |



Page 6 of 7
 Scale
 1:45,760
 Feet
 040800

NOTES:
 Parcel boundaries are approximate and should not be considered legal descriptions. Maps are intended for study purposes only.

CALIFORNIA STATE PARKS GOLD FIELDS DISTRICT & STATEWIDE PLANNING & RECREATION SERVICES

Sources: California Dept. of Parks & Recreation; GreenInfo, Inc.; USGS

Date: 12/2/2021

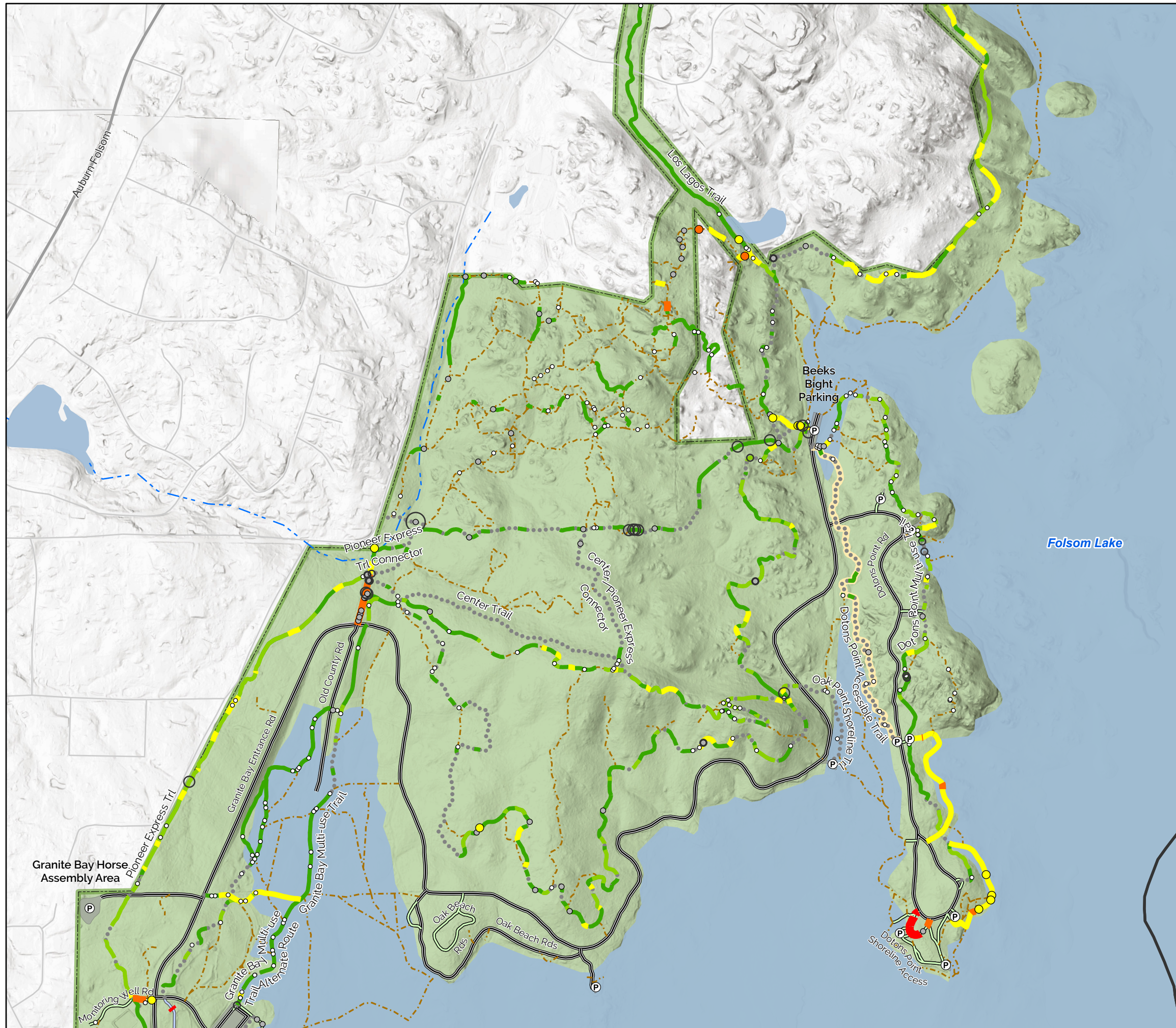


Folsom Area State Parks Road and Trail Management Plan

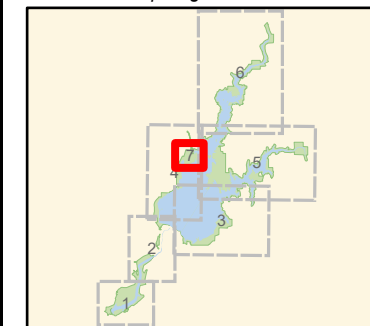
Potential Significance to Water Resources and Drainage Structure Condition

HOFFMAN PROPERTY

- | | |
|---|---|
| <p>Potential Significance to Water Resources Point</p> <ul style="list-style-type: none"> ● Most Significant ● High Significance ● Moderate Significance ○ Low Significance ○ Least Significant <p>Potential Significance to Water Resources Line</p> <ul style="list-style-type: none"> █ Most Significant █ High Significance █ Moderate Significance █ Low Significance █ Least Significant <p>Drainage Structure Condition Index Point</p> <ul style="list-style-type: none"> ○ Critical Problems ○ High Problems ○ Moderate Problems <p> <ul style="list-style-type: none"> Ⓟ Parking Lot — Intermittent Stream ■ Waterbodies </p> | <p>Trails</p> <ul style="list-style-type: none"> ●●● Unpaved Park Trails — Accessible Trail --- Non System Route --- Other Agency Trail <p>Roads</p> <ul style="list-style-type: none"> — Unpaved Park Service Roads — Unpaved Public Vehicular Roads — Paved Public Vehicular Roads <p>Other Agency Service Roads</p> <ul style="list-style-type: none"> — Hike, Bike and Horse — Not Designated <p>Drainage Structure Condition Index Line</p> <ul style="list-style-type: none"> ■ High ■ Moderate <p> <ul style="list-style-type: none"> ▭ County ▭ Folsom Lake State Recreation Area and Folsom Powerhouse State Historic Park </p> |
|---|---|



Map Page Location

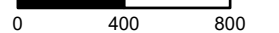


Page 7 of 7

Scale
1:8,680



Feet



NOTES:
Parcel boundaries are approximate and should not be considered legal descriptions. Maps are intended for study purposes only.

CALIFORNIA STATE PARKS GOLD FIELDS DISTRICT & STATEWIDE PLANNING & RECREATION SERVICES

Sources: California Dept. of Parks & Recreation; GreenInfo, Inc.; USGS

Date: 12/2/2021

