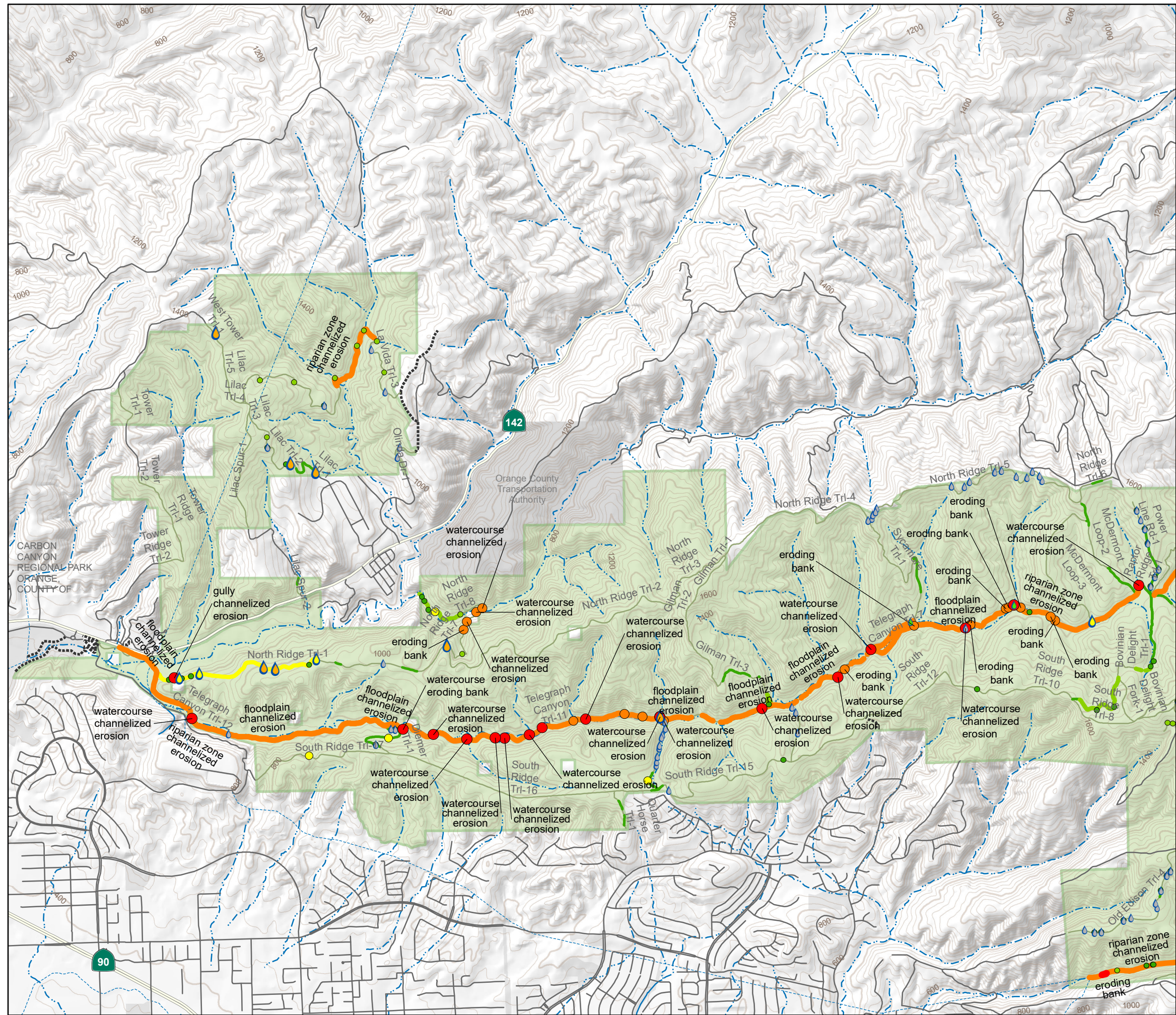


Potential Significance to Water Resources and Drainage Structure Condition



DISCOVERY CENTER / TELEGRAPH CANYON AREA

Potential Significance to Water Resources (Point Features)

- 21 - 48
- 13 - 20
- 10 - 12
- 7 - 9
- 1 - 6

Potential Significance to Water Resources (Line Features)

- 21 - 45 (most significant)
- 13 - 20 (higher significance)
- 10 - 12 (moderate significance)
- 6 - 9 (less significance)
- 1 - 5 (least significant)

Drainage Structure Problem Severity (Point Features)

- Critical
- High
- Moderate
- Slight
- No Problem Observed
- Park Route

Map Legend:

- Chino Hills State Park
- Other Public Land
- Highways
- Local Road
- Other Agency Trl
- Artificial Channel or Pipeline
- Perennial Stream, River
- Intermittent Stream

Map Page Location

Scale:
1:30,050
1 inch = 2,504 feet

Feet:
0 1,000 2,000

Chino Hills State Park Road and Trail Management Plan

NOTES:
Parcel boundaries are approximate and should not be considered legal descriptions. Maps are intended for study purposes only.

CALIF DEPT OF PARKS AND RECREATION
INLAND EMPIRE DISTRICT AND RECREATION PLANNING

Date: 12/18/2020
Data Sources:
Calif. Dept. of Parks & Recreation
Other Public Lands
GreenInfo, Inc.

