

Universal Trail Assessment Process (UTAP) & High Efficiency Trail Assessment Process (HETAP)

Application & Dissemination



P.O. Box 491797
Redding, CA 96049-1797
(530) 547-2060
Fax: (530) 547-2035
trailhead@americantrails.org



P.O. Box 69
Minden, NV 89423
(775) 783-8822
Fax: (775) 783-8823
trails@beneficialdesigns.com

Applying the UTAP & HETAP Objectives

Describe how to use the UTAP or HETAP to measure various trails and paths

Adapt the UTAP or HETAP to obtain the most valuable information

Prioritize trails to assess

HETAP Principles

Objective measurements

Description of trail tread

Features on and around trail

Typical and extreme values

Collect all data in one assessment

Best path of travel

Data required by land managers

Disseminate data to trail users

Assessment Options

Full detail

Select type and amount of feature detail

Select type and level of detail for trail
tread measurements

Description of Trail Tread

Grade - typical and maximum

Cross Slope - typical and maximum

Surface - firmness and type

Width - typical and minimum clearance

What is Extreme for this Trail?



Description of Trail Features



User enjoyment and comfort

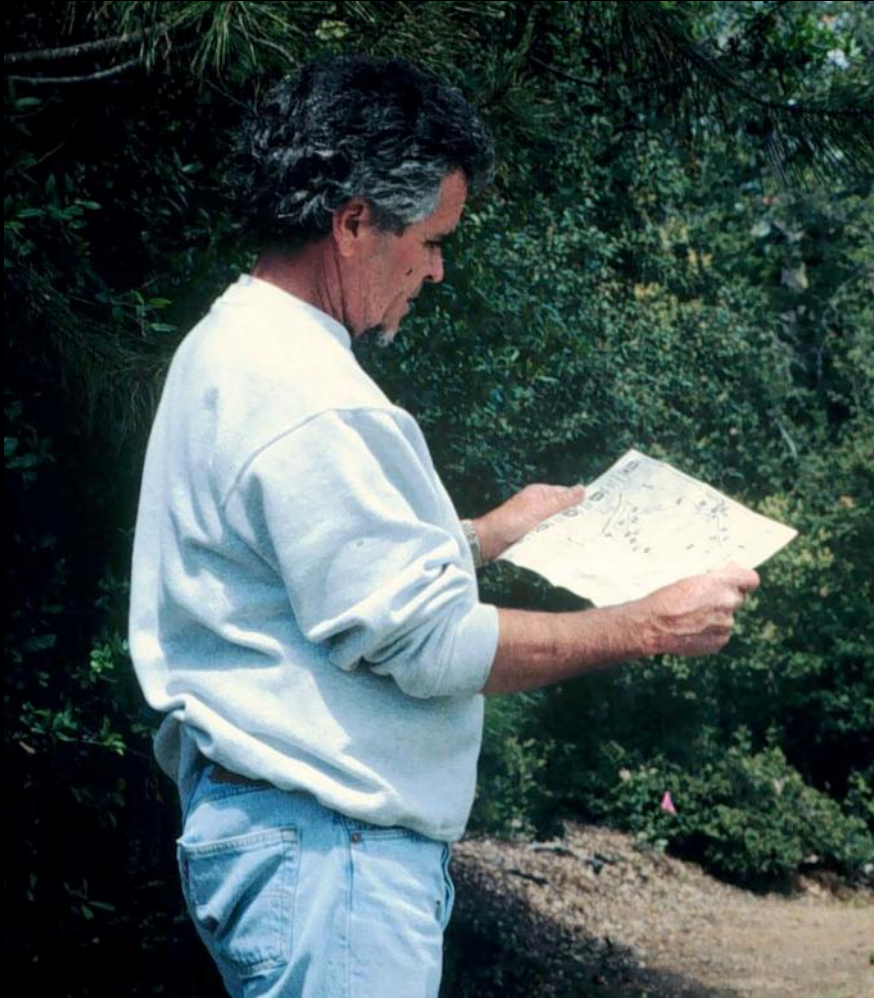


**Construction
and maintenance**



Health and safety

Uses of the UTAP & HETAP



Access

Conservation

Interpretation

Maintenance

Mapping

Asset

Management

Examples of Possible Modifications

Long distance and back country

Shared use paths and ORARs

Compliance with design standards

Maintenance, planning and budgeting

For your scenario, consider:

Can the HETAP or UTAP be used?

What measurements would be made?

What level of detail for trail tread?

What level of detail for features?

For an ADAAG Assessment

Measure extreme conditions

Typical values do not matter

Combined grade and cross slope

Work required for compliance

Reminder: ADA Compliance



Standards for Outdoor Developed Areas now part of the Architectural Barriers Act (ABA) Accessibility Standards and apply to national parks and other outdoor areas developed by the federal government.

They do not apply to outdoor areas developed with federal grants or loans.

Trail

Grade

1:20 (5%) to 1:12 (8.33%) 200 feet max

1:12 (8.33%) to 1:10 (10%) 30 feet max

1:10 (10%) to 1:8 (12%) 10 feet max

Cross Slope

1:20 (5%) maximum unless concrete, asphalt or boards, then 1:48 (2%)

Trail

Width

36 in minimum width

Passing spaces – every
1,000 feet where less
than 60 inches in width

Tread obstacles

2 inches maximum, except concrete,
asphalt, or board = $\frac{1}{2}$ inch

Openings

$\frac{1}{2}$ inch maximum



Outdoor Recreation Access Routes

Grade

Between 1:20 (5%) and 1:12 (8.33%), 50 feet maximum

Between 1:12 (8.33%) and 1:10 (10%), 30 feet maximum

Cross Slope

1:33 (3%) maximum unless concrete, asphalt or boards, then 1:48 (2%)

Outdoor Recreation Access Route

Surface

firm and stable

Width

36 inches min

Passing space

required where width is less than 60
inches - 200 ft. max

Openings

< 0.5 inch sphere



How might you prioritize to complete trail assessments?

Trails to Primary Features



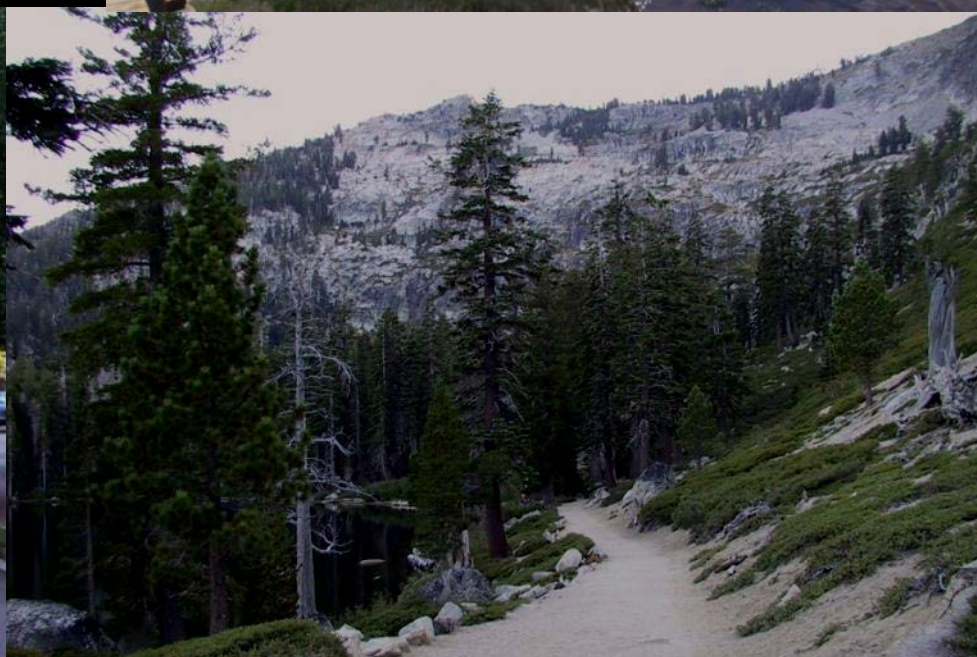
Trails to Different Environments



Trails that Provide a Higher Level of Access



Short or Highly Used Trails



Technical and Challenging Trails



Applying the UTAP/HETAP Summary

HETAP & UTAP can be modified for many different settings and purposes

Maintain key principles and modify to suit your needs

Priority for trails to primary features, different environments, and shorter, high use or higher access trails

Disseminating Information to Users is Critical

Informed choice

User responsibility

Safety

Satisfaction

Accessible formats



Several methods to display Trail Access Information

Trail Access Information Summary Assessment Date: 2009-01-07
Fort Churchill State Historic Park Agency: Nevada State Parks
Ruins Loop State: Nevada
1 Ruins Fort 2009-01-07 County: Lyon

Trail Length: 0.6 mi (1.0 km) Trail Type: Loop
 Elevation: Gain: 45.9 ft (14.0 m)
 Loss: 39.6 ft (12.1 m)

Typical Grade: 2.6% Maximum Grade: 16.4%
 Typical Cross Slope: 1.6% Maximum Cross Slope: 6.5%
 Typical Tread Width: 69.9 in (177 cm) Minimum Tread Width: 36.0 in (91 cm)
 Minimum Vertical Obstruction Height: n/a in (n/a cm) Minimum Clearance Width: n/a in (n/a cm)

Trail Design and Measurement Thresholds

Minimum Obstruction Height:	<u>2.0 in (5 cm)</u>	Design Tread Width:	<u>36.0 in (91 cm)</u>
Minimum MCW Boundary Height:	<u>3.0 in (7 cm)</u>	Vertical Obstruction Design Height:	<u>80.0 in (203 cm)</u>
Largest Obstruction Type:	Size (Height):	Remaining Tread:	Location:
Rock	<u>2.0 in (5 cm)</u>	<u>30.0 in (76 cm)</u>	<u>31.4 ft (9.6 m)</u>
Rock	<u>2.0 in (5 cm)</u>	<u>30.0 in (76 cm)</u>	<u>3278.7 ft (999.4 m)</u>
n/a	<u>n/a in (n/a cm)</u>	<u>n/a in (n/a cm)</u>	<u>n/a ft (n/a m)</u>

Typical Surface Type: Soil

Surface Category:	Length:	Percentage:
Very Soft:	<u>0.0 ft (0.0 m)</u>	<u>0.0 %</u>
Soft:	<u>0.0 ft (0.0 m)</u>	<u>0.0 %</u>
Firm:	<u>3311.8 ft (1009.4 m)</u>	<u>100.0 %</u>
Hard:	<u>0.0 ft (0.0 m)</u>	<u>0.0 %</u>
Paved:	<u>0.0 ft (0.0 m)</u>	<u>0.0 %</u>

Rotational Penetrometer:

Typical Firmness: -- 0.19 in Typical Stability: -- 0.19 in
 Least Firmness: -- 0.54 in Least Stability: -- 0.71 in

Trail Access Information Summary Assessment Date: 2009-01-07
Ruins Loop Agency: Nevada State Parks

Fort Churchill State Historic Park State: Nevada
1 Ruins Fort County: Lyon
2009-01-07

Trail Uses Allowed	Trail Uses Not Allowed
Hiking	Motor Vehicles
Bicycling	Equestrian
Dogs - On Leash	Hunting
Photography	

Park Information/Amenities:

Fort Churchill was once an active U.S. Army fort built in 1861 to provide protection for early settlers. It was abandoned nine years later, and today the ruins are preserved in a state of arrested decay. A visitor center displays information and artifacts of the fort's history. The Pony Express and the Overland Telegraph once passed through this area. Buckland Station is nearby, a Pony Express stop, supply center, and former hotel built in 1870. Facilities at the park include trails, a campground, picnic area, group-use area and access to the Carson River. Visitors can enjoy hiking, historic and environmental education, camping, picnicking, photography and canoeing. The park is located eight miles south of Silver Springs on Alternate U.S. 95, and one mile on Fort Churchill Road. 775-577-2345 region3@cccomm.nethttps://parks.nv.gov/fc.htm

Trailhead Location:

Trail can be accessed from several locations, primarily from the parking lot at the north side of the loop and from the visitor center.

Warning: Trail conditions may have changed since this trail was assessed. Temporary obstructions (e.g. fallen trees or land slides) may not have been mapped. Maximum grades and cross-slopes may vary. Obstructions less than 2.0 in (5 cm) or outside of the tread area 36.0 in (91 cm) wide by 80.0 in (203 cm) high were not reported. Minimum clearance width boundaries were at least 3.0 in (7 cm) high.

This report is generated by HETAP software using a High Efficiency Trail Assessment Process which has been created by Beneficial Designs, Inc.

www.beneficialdesigns.com
trails@beneficialdesigns.com



Trail Uses



Hiking

Dogs on Leash



No Bikes



No Equestrians



No Motorized Vehicles

Hazards and Obstructions



Step
30



Rock
12



Root
6

Pacific Crest Trail

Eldorado National Forest

Trail Length 1.1 mi (1.8 km)

Linear trail

Trail is part of the Pacific Crest National Scenic Trail and starts next to the seasonally open visitor center at Carson Pass. Restrooms are available at trailhead. A \$3.00 parking charge is required to park and hike. Envelopes/depository for fee is present. An overnight camping permit is required if staying overnight. Several local and regional maps are displayed at the trailhead.

Cumulative Gain 427 ft (130 m)
Elevation Change Loss 82 ft (25 m)



Typical Grade is 8.5%

48% of the trail is between 8% and 22%

144 ft (44 m) is between 20% and 22%

8% grade is a standard ramp.



Typical Cross Slope is 3.1%

20% of the trail is between 5% and 11%

226 ft (69 m) is between 8% and 11%



Typical Tread Width is 49 in (124 cm)

Tread Width ranges from 14 in (36 cm) to 100 in (254 cm)



Trail Surface is Soil

100% of the trail is Hard or better

5962 ft (1817 m) of the trail is Firm or better

Trailhead Location

At Carson Pass on Highway 88 directly on north side of the seasonally

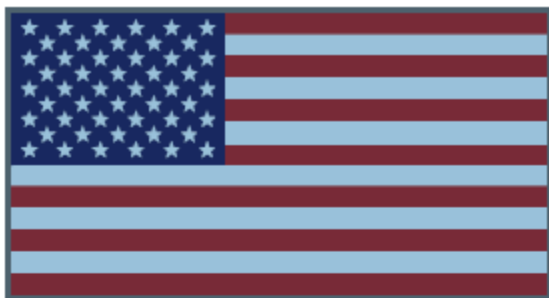


Trail
Access
Information

Warning: Trail conditions may have changed since this trail was assessed. Temporary obstructions (e.g. fallen trees or land slides) may not have been mapped. Maximum grades and cross slopes may vary.

Obstructions less than 6.0 in (15 cm) or outside the tread area 12 in wide by 120 in (3 m) high were not measured. Minimum clearance boundaries were at least 12 in high.

This report has been generated by TrailWare which has been created by Beneficial Designs, Inc.



Ruins Loop

Fort Churchill
State Historic Park

Length 0.6 mi (1.0 km)



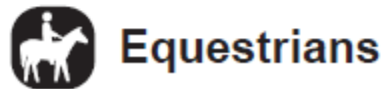
Hikers



Bikes



Dogs OK



Equestrians



No Motorized
Vehicles



Grade

Typical Grade 2.6%

8% of the trail is 5% to 12%

23 ft (7 m) is 12% to 17%
8% grade is a standard ramp



Cross Slope

Typical Cross Slope 5.9%

13% of the trail is 10% to 15%

455 ft (139 m) is 15% to 28%
8% grade is a standard ramp



Tread Width

Typical 19 in (48 cm)

Minimum 12 in (31 cm)



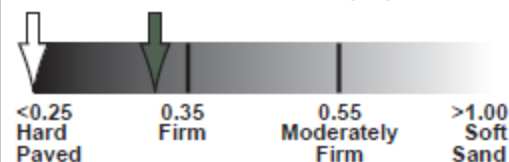
Surface

Soil

3% of the trail is Soft

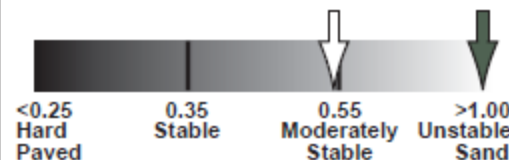
Typical Firmness (in) 0.21

Minimum Firmness (in) 0.32



Typical Stability (in) 0.54

Minimum Stability (in) 1.03



Obstructions

Multiple 6 in (15.2 cm) Rocks

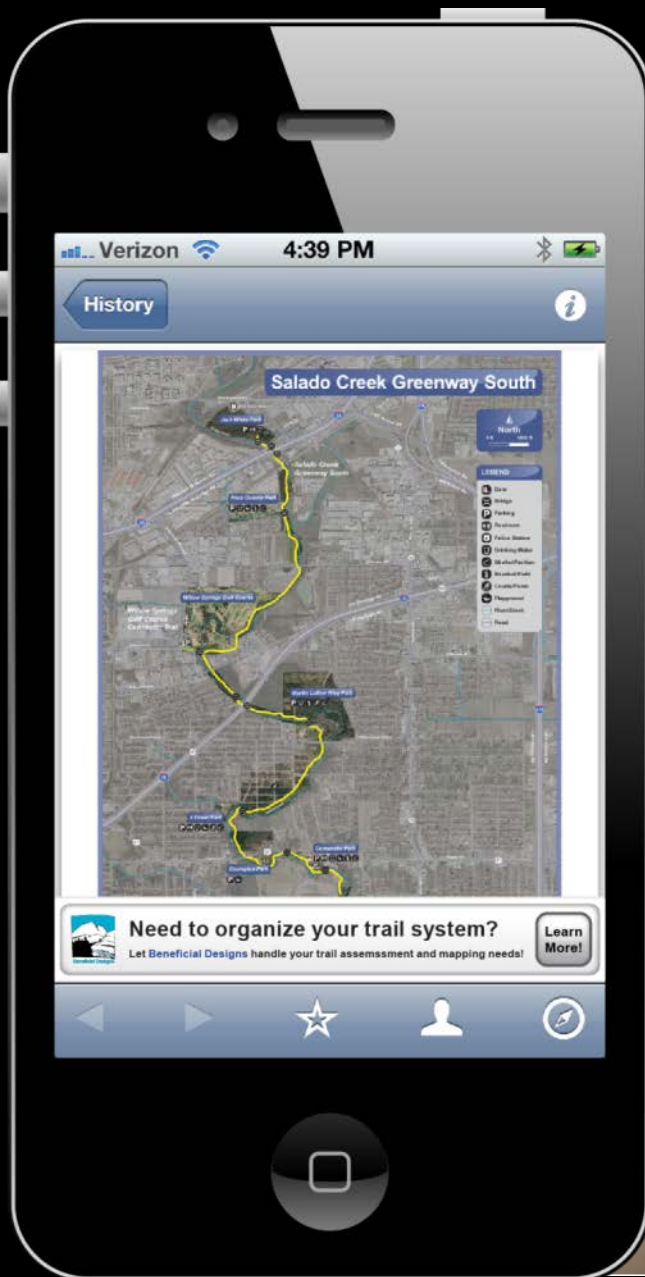
WARNING: Trail conditions may have changed since January 2009 when this trail was assessed. Temporary obstacles were not mapped.

Signage created by Beneficial Designs Inc. using data collected by a certified trail assessment coordinator.



Trail Access Information

QR Codes take TAI to the next level



TAI on Carbonate & Existing Signpost





TAI on Wooden Post



Sparks Blvd. Bike Path
City of Sparks
Truckee River to Pyramid Hwy.
Length 6.8 mi (10.9 km)

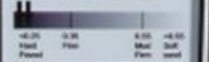
-  Hikers
-  Dogs on Leash
per posted restrictions
-  Bikes
-  No Equestrians
-  No Motorized Vehicles

 **Grade**
Typical Grade 1.7%
4% of the trail is 5% to 8%
131 ft (40 m) is 8% to 15%
8% grade is a standard ramp.

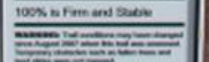
 **X-Slope**
Typical Cross Slope 2.3%
5% of the trail is 5% to 8%
185 ft (56 m) is 8% to 14%

 **Tread Width**
Typical Tread Width
109 in (276 cm)


 **Surface Type**
Concrete / Asphalt
Typical Firmness 0.19
Minimum Firmness 0.22



Typical Stability 0.25
Minimum Stability 0.27



100% is Firm and Stable

 **Trail Access Information**

TAI on Panel Map



Riverview Park / Mexican Ditch Trail System



- Trail Use:**
- Hiking
 - Bicycling
 - Equestrian
 - Dogs Allowed per posted restrictions
 - No Motor Vehicles Except City Maintenance Vehicles
 - 16" Minimum Clearance Width Contact the Carson City Parks and Recreation Dept. at 887-2262 for gate access.
 - Trail Access Information

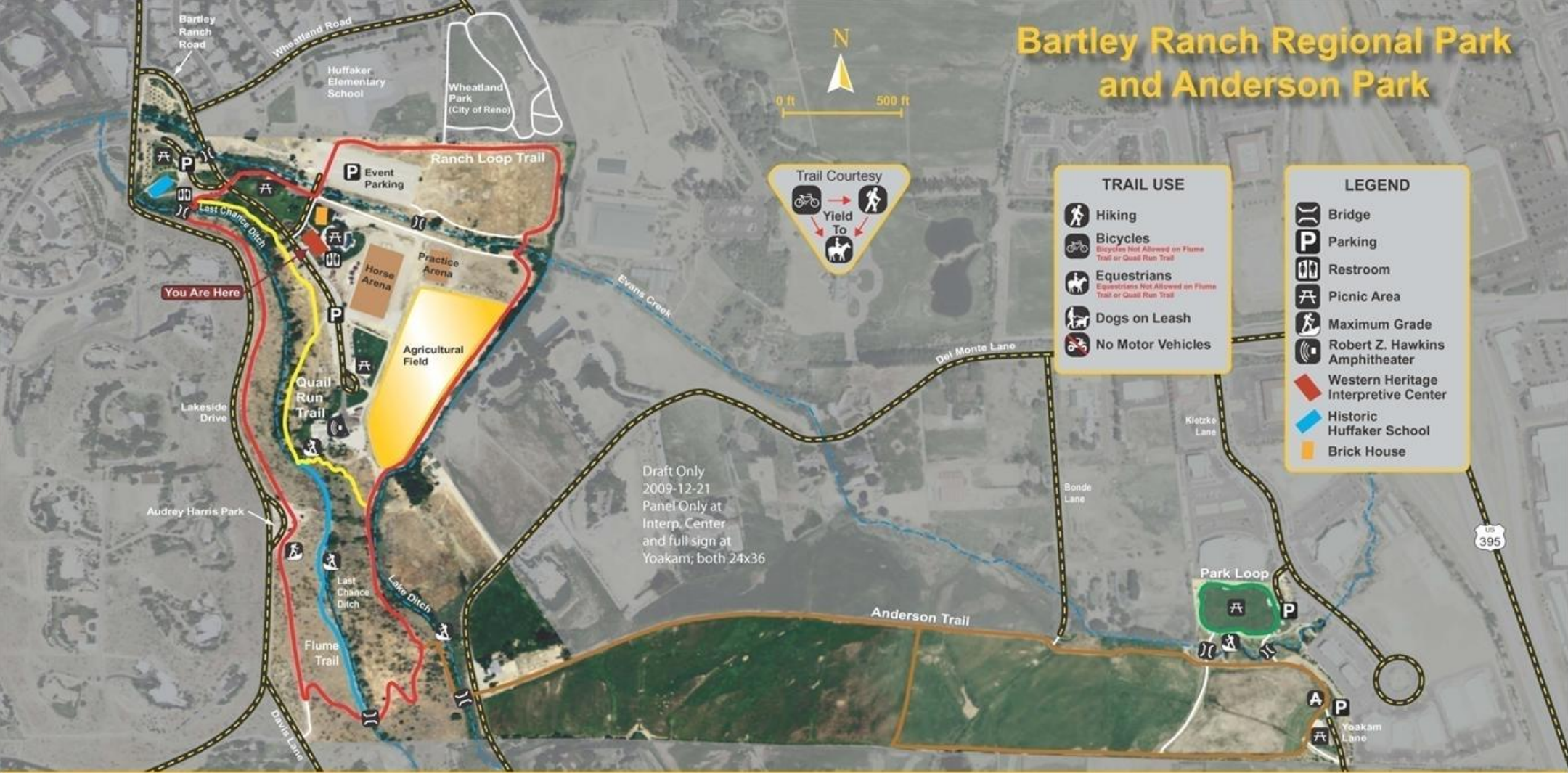
Trail Name	Length	Typical Grade	Max Grade	Typical Cross Slope	Max Cross Slope	Typical Trail Width	Min Clearance Width	Surface Type
Riverview Park (Full Loop)	1.6 mi	0.8%	90 ft is 8% - 11%	2.8%	722 ft is 6% - 10%	11ft	16 in	Aggregate / Gravel
Riverview Park (North Loop)	0.8 mi	0.8%	435 ft is 3% - 4%	2.5%	189 ft is 10%	10 ft	16 in	Aggregate / Gravel
Riverview Park (South Loop)	1.0 mi	0.8%	76 ft is 9%	2.5%	183 ft is 8%	12 ft	16 in	Aggregate / Gravel
Connector Trail	0.3 mi	2.2%	155 ft is 11%	2.0%	29 ft is 9%	12 ft	60 in	Aggregate / Gravel
Mexican Ditch Trail (North)	0.6 mi	0.8%	12 ft is 7% - 18%	5.0%	286 ft is 33%	12 ft	60 in	Aggregate / Gravel
Mexican Ditch Trail (South)	0.6 mi	0.7%	74 ft is 3%	2.5%	212 ft is 10%	8 ft	60 in	Sand

A standard ramp has an 8% grade.

DISCLAIMER: This information may have changed since July 2002 when this map was printed. Trail conditions, construction, or other changes may occur without notice. Please check for current information before you visit.

Map created by Mountain Project Inc. © 2002 Mountain Project Inc. All rights reserved. This map is a service of Mountain Project Inc. and is not a product of the City of Carson City.

Bartley Ranch Regional Park and Anderson Park



- ### TRAIL USE
- Hiking
 - Bicycles
Bicycles Not Allowed on Flume Trail or Quail Run Trail
 - Equestrians
Equestrians Not Allowed on Flume Trail or Quail Run Trail
 - Dogs on Leash
 - No Motor Vehicles

- ### LEGEND
- Bridge
 - Parking
 - Restroom
 - Picnic Area
 - Maximum Grade
 - Robert Z. Hawkins Amphitheater
 - Western Heritage Interpretive Center
 - Historic Huffaker School
 - Brick House

Draft Only
2009-12-21
Panel Only at
Interp. Center
and full sign at
Yoakam; both 24x36

Trail Name	Length	Typical Grade	Maximum Grade	Typical Cross Slope	Maximum Cross Slope	Typical Trail Width	Minimum Clearance Width	Surface Type	Surface Firmness		Surface Stability	
									Typical	Worst	Typical	Worst
Ranch Loop Trail	1.5 mi	4.5%	371 ft is 16% – 25%	2.8%	18 ft is 16% – 20%	90 in	40 in	Aggregate/Gravel	0.19	0.22	0.36	0.60
Quail Run Trail	0.4 mi	7.3%	186 ft is 20% – 40%	3.5%	46 ft is 18% – 30%	60 in	25 in	Aggregate/Gravel	0.19	0.22	0.39	0.50
Flume Trail	0.2 mi	4.6%	37 ft is 14% – 19%	3.9%	47 ft is 12% – 14%	48 in	20 in	Soil	0.23	0.25	0.38	0.49
Anderson Trail (Round Trip)	1.7 mi	2.5%	196 ft is 14% – 21%	2.4%	311 ft is 7% – 11%	76 in	48 in	Aggregate/Gravel	0.19	0.22	0.39	0.52
Park Loop	0.2 mi	1.6%	64 ft is 4% – 5%	1.8%	230 ft is 3% – 4%	84 in	84 in	Aggregate/Gravel	0.18	0.19	0.37	0.43



Funded by the Nevada Recreational Trails Program

WARNING: Trail conditions may have changed since September 2009 when these trails were assessed. Secondary trails are shown in white. Signage created by Beneficial Designs Inc. using data collected by a certified trail assessment coordinator.

A Trail Access Information

Eisenhower Park Trails

A Trail Access Information

Typical Trail Qualities

Trail Name	Length	Typical Grade	Maximum Grade Standard Ramp is 8.3%	Typical Cross Slope	Maximum Cross Slope	Typical Tread Width	Minimum Clearance Width	Surface Type
Red Oak Trail	0.5 mi	7.1%	78 ft is 20% - 29%	5.7%	78 ft is 20% - 22%	48 in	48 in	Aggregate / Gravel
Shady Creek Trail	0.4 mi	5.4%	66 ft is 15% - 29%	4.4%	145 ft is 13% - 17%	44 in	36 in	Aggregate / Gravel
Cedar Flats Trail	0.8 mi	4.3%	133 ft is 15% - 21%	3.5%	87 ft is 9% - 10%	84 in	84 in	Asphalt
Hillview Natural Trail	2.6 mi	4.8%	353 ft is 21% - 37%	3.5%	231 ft is 15% - 26%	55 in	36 in	Crushed Stone (Fines)
Yucca Paved Trail	1.6 mi	4.0%	67 ft is 21% - 39%	3.3%	111 ft is 16% - 24%	72 in	30 in	Wood Chip / Mulch
Observation Tower Trail	0.1 mi	4.7%	124 ft is 11% - 17%	2.9%	45 ft is 6%	96 in	96 in	Asphalt
Live Oak Trail	0.1 mi	4.5%	33 ft is 11% - 15%	4.2%	65 ft is 10% - 19%	60 in	60 in	Wood Chip / Mulch



WARNING:
Trail conditions may have changed since March 2011 when these trails were assessed. Signage created by Beneficial Designs Inc. using trail data collected by a certified trail assessment coordinator.

Trail Name	Length	Typical Grade	Maximum Grade	Typical Cross Slope	Maximum Cross Slope	Typical Tread Width	Minimum Clearance Width	Surface Type
Red Oak Trail	0.5 mi	7.1%	78 ft is 20% - 29%	5.7%	78 ft is 20% - 22%	48 in	48 in	Aggregate / Gravel
Shady Creek Trail	0.4 mi	5.4%	66 ft is 15% - 29%	4.4%	145 ft is 13% - 17%	44 in	36 in	Aggregate / Gravel
Cedar Flats Trail	0.8 mi	4.3%	133 ft is 15% - 21%	3.5%	87 ft is 9% - 10%	84 in	84 in	Asphalt
Hillview Natural Trail	2.6 mi	4.8%	353 ft is 21% - 37%	3.5%	231 ft is 15% - 26%	55 in	36 in	Crushed Stone (Fines)
Yucca Paved Trail	1.6 mi	4.0%	67 ft is 21% - 39%	3.3%	111 ft is 16% - 24%	72 in	30 in	Wood Chip / Mulch
Observation Tower Trail	0.1 mi	4.7%	124 ft is 11% - 17%	2.9%	45 ft is 6%	96 in	96 in	Asphalt
Live Oak Trail	0.1 mi	4.5%	33 ft is 11% - 15%	4.2%	65 ft is 10% - 19%	60 in	60 in	Wood Chip / Mulch





Lampe Park

Rough Draft Only
2009-12-23
1 at 24" x 36"
Panel Only



TRAIL USE

- Hiking
- Bicycles
- No Dogs
- No Equestrians
- No Motor Vehicles

LEGEND

- Bridge
- Parking
- Restroom
- Skate Park
- Playground
- Picnic Area
- Horseshoes
- Soccer Field
- Tennis Court
- Batting Cage
- Group Pavilion
- Sand Volleyball Court
- Park Boundary



Trail Name	Outer Loop Trail	Inner Loop Trail	Senior Center Trail
Length	0.8 miles	0.6 miles	0.2 miles
Typical Grade	1.3%	1.1%	1.5%
Maximum Grade	17 feet is 5 - 8%	41 feet is 3 - 5%	27 feet is 5 - 6%
Typical Cross Slope	1.5%	1.0%	1.1%
Maximum Cross Slope	142 feet is 5 - 6%	246 feet is 4 - 6%	63 feet is 3 - 5%
Typical Tread Width	10 feet	12 feet	9 feet
Minimum Clearance Width	49 inches	8 feet	7 feet
Surface Type	Decomposed Granite/Pavers	Decomposed Granite/Pavers	Decomposed Granite
Typical Surface Firmness	0.20 inches (Worst 0.23 inches)	0.20 inches (Worst 0.23 inches)	0.19 inches (Worst 0.23 inches)
Typical Surface Stability	0.26 inches (Worst 0.33 inches)	0.26 inches (Worst 0.33 inches)	0.28 inches (Worst 0.33 inches)



WARNING: Trail conditions may have changed since July 2007 when these trails were assessed. Secondary trails are shown in black. Signage created by Beneficial Designs Inc. using data collected by a certified trail assessment coordinator.

Trail Access Information

Fort Churchill State Historic Park



Draft Only
2009-12-24
4 at 24 x 36

To Alternate Highway 95
0.8 mi

To Highway 50
16.0 mi



Funded by the
Nevada Recreational Trails Program

- ### TRAIL USE
- Hiking
 - Bicycles
 - Dogs on Leash
 - No Equestrians
 - No Motor Vehicles

- ### LEGEND
- Bridge
 - Parking
 - Restroom
 - Picnic Area
 - Fee Station
 - Maximum Grade



To
Orchard Day Use Area
and Buckland Station
0.6 mi

Surface Firmness (in)



Surface Stability (in)



Trail Name	Length	Typical Grade	Maximum Grade	Typical Cross Slope	Maximum Cross Slope	Typical Tread Width	Minimum Clearance Width	Surface Type	Surface Firmness		Surface Stability	
									Typical	Worst	Typical	Worst
Buckland Loop	0.6 mi	3.4%	29 ft is 22 - 31%	2.4%	22 ft is 21 - 33%	47 in	24 in	Sand/Soil	0.23	0.28	0.80	1.00
Nature Trail	1.6 mi	3.8%	132 ft is 20 - 37%	2.6%	183 ft is 10 - 22%	41 in	15 in	Sand/Soil	0.22	0.40	0.66	1.51
Railroad Trail	0.2 mi	4.4%	41 ft is 26 - 38%	2.4%	178 ft is 5 - 14%	50 in	36 in	Sand/Soil	0.20	0.20	0.64	0.67
Ruins Loop	0.6 mi	2.6%	23 ft is 12 - 17%	1.6%	68 ft is 5 - 7%	70 in	36 in	Soil	0.19	0.19	0.54	0.71
Stewart Trail	0.5 mi	4.1%	42 ft is 30 - 42%	3.3%	54 ft is 21 - 32%	45 in	18 in	Sand/Soil	0.21	0.25	0.70	0.97

WARNING: Trail conditions may have changed since January 2009 when these trails were assessed. Secondary trails are shown in black. Signage created by Beneficial Designs Inc. using data collected by a certified trail assessment coordinator.

Trail Access Information

Computer Kiosk or Internet Site



HOME ABOUT US DEFINITIONS LINKS TRAIL ACCESS INFORMATION

TRAIL FEATURES

Customize your search by trail use and features.

TRAIL ACCESS

Find a trail to suit your ability. Search by grade, cross-slope and surface.

TRAIL MANAGEMENT

Authorized trail managers may add or edit trail information. Contact Beneficial Designs.



QUICK TRAIL SEARCH



Type in (a few letters of) a park or trail name:

OR

View trails by state:

PICK OF THE MONTH



Big Basin Redwoods State Park
Boulder Creek, CA

Features 2,000 year-old redwoods and over 50 miles of trails. Reservations required for camping. Phone: 831.338.8860

Have you ever finished a three hour hike in one hour? Have you struggled on a "moderate" trail? Have you encountered barriers on an "easy" trail? The Trail Explorer website is unique because it uses [Trail Access Information](#) to help trail users make informed decisions about which public lands to visit, and which trails will best meet their interests, abilities and desired experiences. Trail Explorer benefits all users, but is particularly helpful for individuals with disabilities, older adults, parents with young children, and novice hikers.

[home](#) | [about us](#) | [definitions](#) | [trail access information](#) | [links](#) | [acknowledgments](#) | [disclaimer](#)

© Copyright 2001 Beneficial Designs 

TRAIL FEATURES

Customize your search by trail use and features.

TRAIL ACCESS

Find a trail to suit your ability. Search by grade, cross-slope and surface.

TRAIL MANAGEMENT

Authorized trail managers may add or edit trail information. Contact [Beneficial Designs](#).

CONTACT US



TRAIL ACCESS SEARCH Use this advanced search to find a trail to match your abilities by selecting your preferences from the options below. To broaden your search, remove preferences in categories of less importance. For the definition of a term, click on the term.

Choose a state:

Trail length:

Surface Firmness:

Typical grade:

Typical cross-slope:

Typical tread width:

Minimum clearance width:

Find Trails

Clear Form



TRAIL FEATURES

Customize your search by trail use and features.

TRAIL ACCESS

Find a trail to suit your ability. Search by grade, cross-slope and surface.

TRAIL MANAGEMENT

Authorized trail managers may add or edit trail information. Contact Beneficial Designs.

TRAIL FEATURE SEARCH - Find a trail that fits your interests and abilities by selecting your preferences from the options below. To broaden your search, remove preferences in categories of less importance. For the definition of a term, click on the term.

Choose a state:

Indiana ▼

Uses permitted:

hiking/walking/running ▼

Destination Feature:

No preference ▼

Desired trail length:

2.1 to 5.0 mi (3.3 to 8.0 km) ▼

Typical grade:

No preference ▼

Firmness required:

Firm or better ▼

Find Trails

Clear Form



9 trails found. Use the "Back" button on your browser to refine your selection.
 Click on the trail name for more information.
 Click on the column heading to sort by column.

Trail	Park	State	Length	Typical Grade	Max Grade	Typical Xslope	Max Xslope	Typical Tread Width	Min Clear Width	Surface Firmness	Surface Mats
Trail 10	McCormick's Creek State Park	IN	0.7 miles (1.1 km)	3.3%	34%	3.5%	12%	50 in (126 cm)	na	Firm	Rock/Boulder
Trail 8	McCormick's Creek State Park	IN	0.7 miles (1.1 km)	2.3%	12%	1.1%	4%	60 in (152 cm)	na	Paved	Asphalt
Trail A	McCormick's Creek State Park	IN	0.2 miles (0.3 km)	2.2%	9%	1.3%	4%	58 in (148 cm)	na	Firm	Crushed Stone (Fines)
Trail 6	Spring Mill State Park	IN	0.4 miles (0.7 km)	2.3%	7%	2.2%	4%	60 in (152 cm)	na	Paved	Asphalt
Trail 7	Spring Mill State Park	IN	0.9 miles (1.5 km)	3.3%	23%	3.1%	8%	52 in (131 cm)	na	Firm	Soil
Trail 7 Spur to Trail 4	Spring Mill State Park	IN	0.4 miles (0.6 km)	3.9%	27%	2.8%	9%	49 in (125 cm)	na	Firm	Soil
Trail 10 Spur to Camels Back	Turkey Run State Park	IN	0.1 miles (0.2 km)	0.9%	2%	1.8%	5%	60 in (152 cm)	na	Firm	Crushed Stone (Fines)
Trail 11	Turkey Run State Park	IN	0.2 miles (0.3 km)	3.1%	9%	4.3%	11%	60 in (152 cm)	na	Firm	Crushed Stone (Fines)
Trail 7 Spur to Campground	Turkey Run State Park	IN	0.1 miles (0.2 km)	3.3%	6%	2.7%	5%	60 in (152 cm)	na	Firm	Soil



Trail 11

Turkey Run State Park

Route 1 Box 164
Marshall, IN 47859

County:

Phone: (765) 597-2635

FAX:

Email:

Website: <http://www.state.in.us/dnr/parklake/parks/turkeyrun.html>

Length: 0.2 miles (0.3 km)

Destination: Lieber Memorial & Log Church

Destination Type: Historical

Trail 11 starts from the Service Road besides the Turkey Run Inn. A short hike about Turkey Run Hollow to the Lieber Memorial and Log Church.

Cumulative Elevation Gain: 23 ft (7 m)

Cumulative Elevation Loss: 4 ft (1 m)

Uses: Hiking

Facilities: Historical

Features: Lieber Memorial
Log Church

Obstructions:



Typical Grade is 3.1%
7% of the trail is 6% to 9%
64 ft (20 m) is 8% to 9%
8% grade is a standard ramp.



Minimum Tread Width is 60 in (152 cm)
Maximum Tread Width is 60 in (152 cm)



Typical Cross Slope is 4.3%
18% of the trail is 6% to 11%
160 ft (49 m) is 10% to 11%



Trail Surface is Crushed Stone (Fines)
100% of the trail is Firm
0 ft (0 m) of the trail is Soft

Summary

HETAP & UTAP can be modified for many different settings and purposes

Maintain key principles and modify to suit your needs

Priority for trails to primary features, different environments, and shorter, high use or higher access trails

Provide trail data that meets the desire of trail users

Beneficial Designs, Inc.

Minden, Nevada

www.beneficialdesigns.com

trails@beneficialdesigns.com

775.783.8822 voice

775.783.8823 fax

*Working toward universal access
through research, design & education*