



State Vehicular Recreation Area

Hungry Valley

5301 Ralphs Ranch Rd. Interstate 5 • Gorman, CA 93243 • 661.248.7007

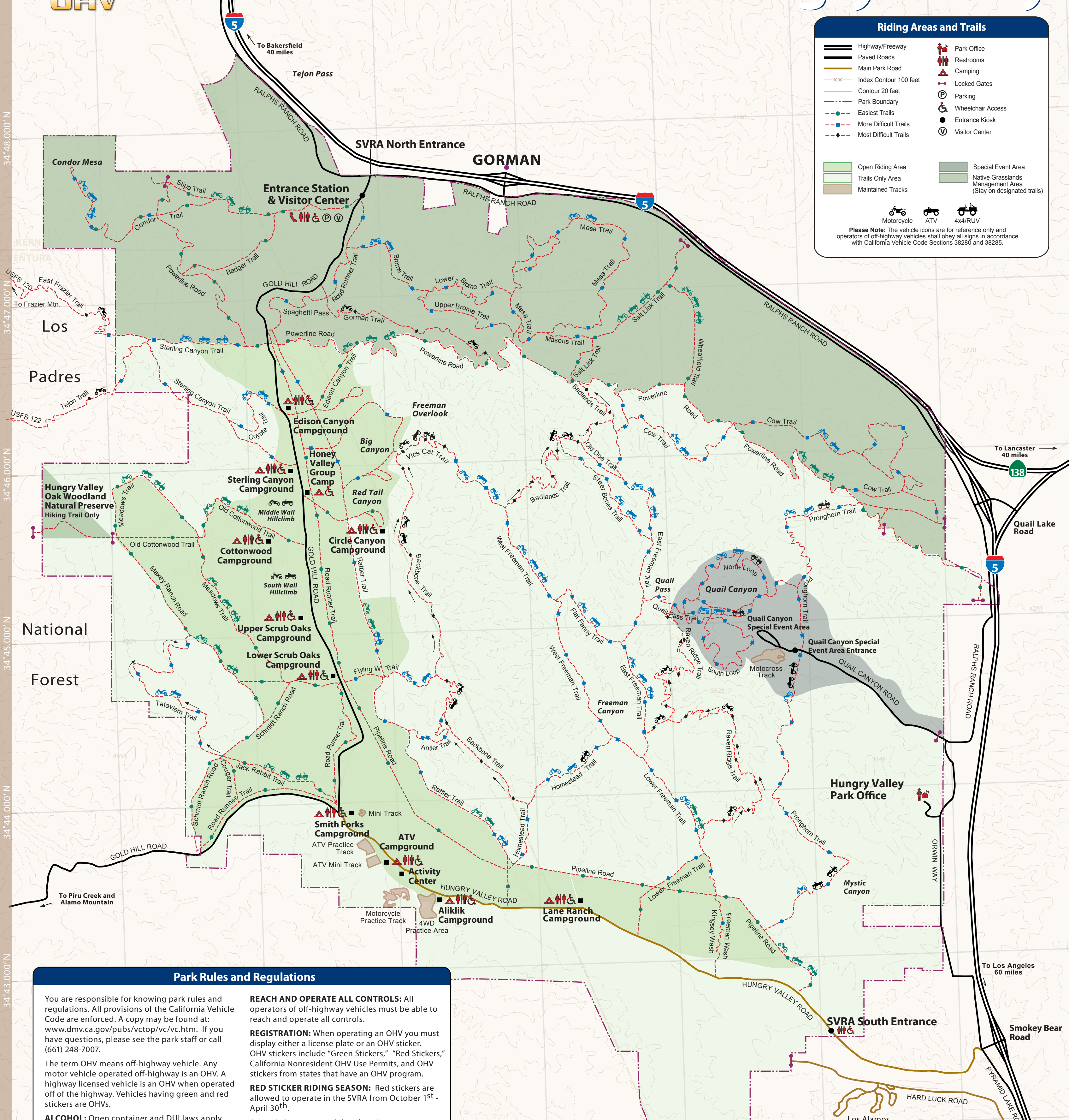
Riding Areas and Trails

	Highway/Freeway		Park Office
	Paved Roads		Restrooms
	Main Park Road		Camping
	Index Contour 100 feet		Locked Gates
	Contour 20 feet		Parking
	Park Boundary		Wheelchair Access
	Easiest Trails		Entrance Kiosk
	More Difficult Trails		Visitor Center
	Most Difficult Trails		

	Open Riding Area		Special Event Area
	Trails Only Area		Native Grasslands Management Area (Stay on designated trails)
	Maintained Tracks		

	Motorcycle		ATV		4x4/RUV
--	------------	--	-----	--	---------

Please Note: The vehicle icons are for reference only and operators of off-highway vehicles shall obey all signs in accordance with California Vehicle Code Sections 38280 and 38285.



Park Rules and Regulations

You are responsible for knowing park rules and regulations. All provisions of the California Vehicle Code are enforced. A copy may be found at: www.dmv.ca.gov/pubs/vctop/vc/vc.htm. If you have questions, please see the park staff or call (661) 248-7007.

The term OHV means off-highway vehicle. Any motor vehicle operated off-highway is an OHV. A highway licensed vehicle is an OHV when operated off of the highway. Vehicles having green and red stickers are OHVs.

ALCOHOL: Open container and DUI laws apply off-highway just as they do on-highway. Don't drink and drive. Alcohol is only allowed in your campsite.

ATV AND ROV LAWS: There are laws which apply specifically to the operation of ATVs and ROVs only. (More complete information is on the reverse side.)

DOGS: Dogs must be kept on a leash at all times. Please pick up after your dog.

LIGHTS: OHVs operated between sunset and sunrise must display at least one lighted white headlight and one lighted red taillight visible from 200 feet.

NOISE EMISSIONS: The law limits noise emissions from all OHVs. Noise emissions for most OHVs are limited to not more than 96 dBA when measured from a distance of 20 inches using standardized test procedures. For more specific information, go to: www.ohv.parks.ca.gov/noise_emissions.

QUIET HOURS: 10pm-6am

REACH AND OPERATE ALL CONTROLS: All operators of off-highway vehicles must be able to reach and operate all controls.

REGISTRATION: When operating an OHV you must display either a license plate or an OHV sticker. OHV stickers include "Green Stickers," "Red Stickers," California Nonresident OHV Use Permits, and OHV stickers from states that have an OHV program.

RED STICKER RIDING SEASON: Red stickers are allowed to operate in the SVRA from October 1st - April 30th.

SIRENS: Sirens are prohibited on OHVs.

SPEED: Please follow posted speed limits throughout the park. In camping and developed areas, keep speeds to 15 mph or less. Never drive faster than is safe for conditions.

SPARK ARRESTERS: All vehicles operating off-highway must be equipped with either a street legal muffler or a spark arrester maintained in effective working order.

SUSPENDED OR REVOKED LICENSE: Anyone whose driving privileges have been suspended or revoked is prohibited from operating any motor vehicle, on- or off-highway.

VEGETATION: It is never legal to drive or ride over vegetation. Always stay on established trails.

WARNING LIGHTS: Display of red or blue warning lights are prohibited (not applicable to lighted whips).

Trails in Los Padres National Forest Area

Trail No.	Name
118	West Frazier Mine Rd.
120	East Frazier Trail
121	Arrastra Trail
122	Tejon Trail
119	West Frazier Tie Rd.
125	Long Dave Valley Rd.
123	Long Dave Canyon Trail
124	Gold Hill Trail
128	Piru Trail
129	Miller Jeep Trail
130	Snowy Trail

Scale in Miles: 0, 1/2, 1 Mile

Scale in Miles: 0, 1/2, 1 Mile

Locations of features are representations. Actual locations of some features may vary over time as a result of weather, maintenance and other factors. Observe all signage, and use appropriate caution when traveling through the park.

34°48.000' N
34°47.000' N
34°46.000' N
34°45.000' N
34°44.000' N
34°43.000' N
34°42.000' N
34°41.000' N

118°54.000' W 118°53.000' W 118°52.000' W 118°51.000' W 118°50.000' W 118°49.000' W 118°48.000' W