

Where Are The Flowers?

1. The Butte

A wide variety of flowers can be seen at the base of the East Butte, including dense fields of brown-eyed primrose, sand verbena, desert lilies, and Arizona lupine. The access trail can be found behind the restroom and shower building at the intersection of Ranger Station and Quarry Road. Those without 4WD may walk to this easily accessed field.

2. Fault Wash

The northern end of Fault Wash has impressive fields of desert gold sunflowers, lupine, and several species of primrose, including the fragrant dune evening primrose. Fields begin around mile 2. 4X4 Required.
4X4 Required.

3. Palo Verde Wash

Palo Verde Wash, like Fault Wash, has dense fields of sunflowers and primrose. Clusters of desert chicory, sand verbena, and desert daffodils can be seen. 4X4 Required.

4. Back of Devil's Slide

One of the most spectacular fields of the season! Access by parking near Devil's Slide, off Shell Reef Expressway. Hike over the hill, headed north. Sand verbena, dune evening primrose, and desert gold sunflowers abound! A wide variety of other flowers can also be seen. 4X4 Required.

5. Pack Rat Wash

Desert sunflower and brown-eyed primrose fill the fields here. The entire wash is flanked by flowers, but dense fields can be found at mile marker 2.0 and 3.7. 4X4 Required.

6. East Bank Wash

The first two miles of East Bank Wash are deceptively sparse. A picturesque canyon full of popcorn flowers, primrose, and sand verbena, awaits at mile marker 2.7. A few desert lilies are just beginning to bloom here. Sunflower fields continue until the junction with Bank Wash.

7. Buttes Pass Rd

Those with street legal vehicles only may explore Buttes Pass Road, which is part of neighboring Anza Borrego Desert State Park. Buttes Pass Road, Cut Across Trail, and Blowsand Canyon have fields of primrose, verbena, brittlebush and popcorn flowers.



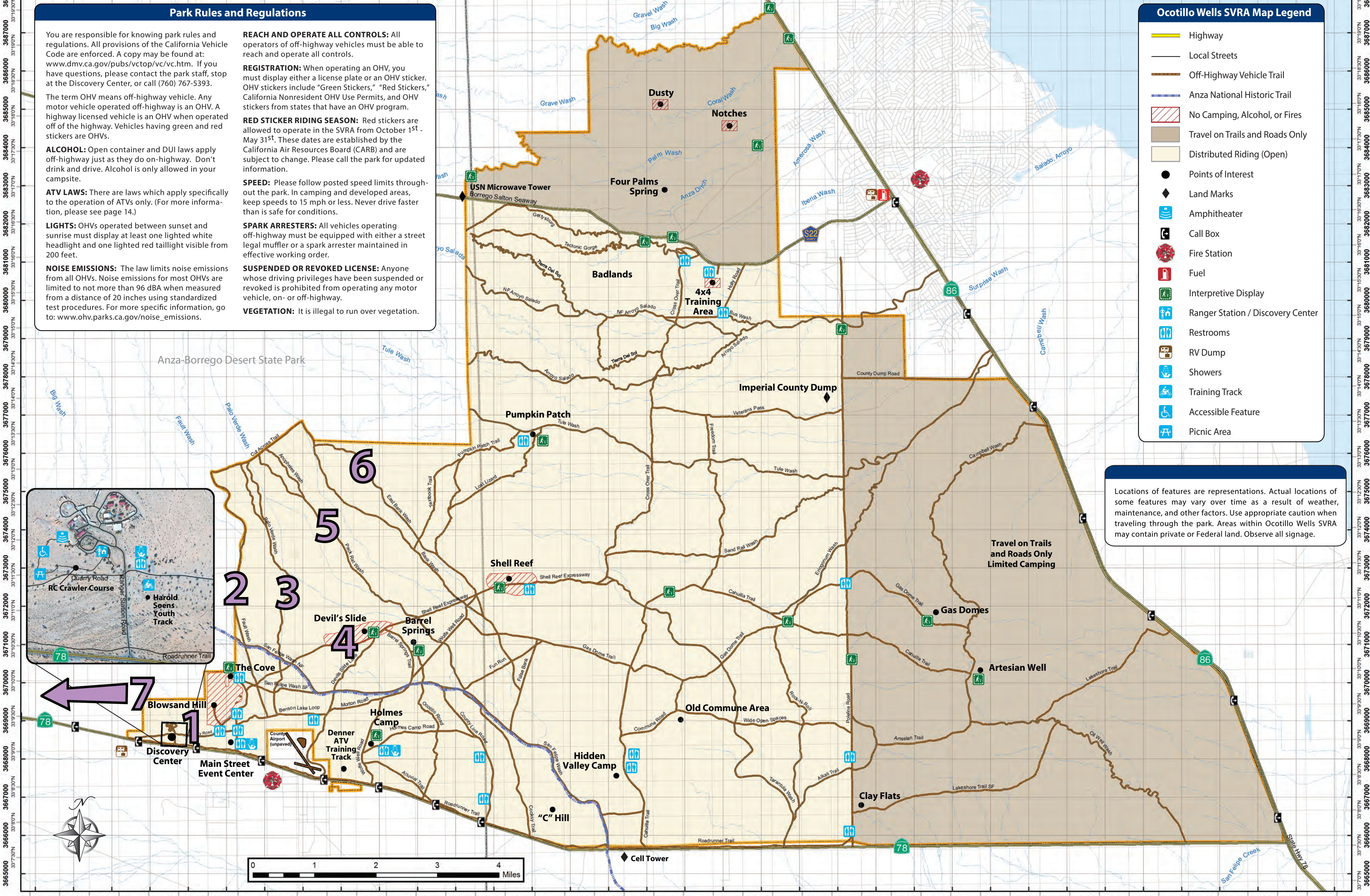


State Vehicular Recreation Area Ocotillo Wells

5172 Highway 78, Box 10 • Borrego Springs, CA 92004 • 760.767.5391

574000 575000 576000 577000 578000 579000 580000 581000 582000 583000 584000 585000 586000 587000 588000 589000 590000 591000 592000 593000 594000 595000 596000 597000 598000 599000 600000 601000 602000 603000 604000 605000 606000 607000 608000

116°12'30"W 116°12'00"W 116°11'30"W 116°11'00"W 116°10'30"W 116°10'00"W 116°9'30"W 116°9'00"W 116°8'30"W 116°8'00"W 116°7'30"W 116°7'00"W 116°6'30"W 116°6'00"W 116°5'30"W 116°5'00"W 116°4'30"W 116°4'00"W 116°3'30"W 116°3'00"W 116°2'30"W 116°2'00"W 116°1'30"W 116°1'00"W 116°0'30"W 116°0'00"W 115°59'30"W 115°59'00"W 115°58'30"W 115°58'00"W 115°57'30"W 115°57'00"W 115°56'30"W 115°56'00"W 115°55'30"W 115°55'00"W 115°54'30"W 115°54'00"W 115°53'30"W 115°53'00"W 115°52'30"W 115°52'00"W 115°51'30"W 115°51'00"W 115°50'30"W 115°50'00"W



Park Rules and Regulations

You are responsible for knowing park rules and regulations. All provisions of the California Vehicle Code are enforced. A copy may be found at: www.dmv.ca.gov/pubs/vctop/vc/vc.htm. If you have questions, please contact the park staff, stop at the Discovery Center, or call (760) 767-5393.

The term OHV means off-highway vehicle. Any motor vehicle operated off-highway is an OHV. A highway licensed vehicle is an OHV when operated off of the highway. Vehicles having green and red stickers are OHVs.

ALCOHOL: Open container and DUI laws apply off-highway just as they do on-highway. Don't drink and drive. Alcohol is only allowed in your campsite.

ATV LAWS: There are laws which apply specifically to the operation of ATVs only. (For more information, please see page 14.)

LIGHTS: OHVs operated between sunset and sunrise must display at least one lighted white headlight and one lighted red taillight visible from 200 feet.

NOISE EMISSIONS: The law limits noise emissions from all OHVs. Noise emissions for most OHVs are limited to not more than 96 dBA when measured from a distance of 20 inches using standardized test procedures. For more specific information, go to: www.ohv.parks.ca.gov/noise_emissions.

REACH AND OPERATE ALL CONTROLS: All operators of off-highway vehicles must be able to reach and operate all controls.

REGISTRATION: When operating an OHV, you must display either a license plate or an OHV sticker. OHV stickers include "Green Stickers," "Red Stickers," California Nonresident OHV Use Permits, and OHV stickers from states that have an OHV program.

RED STICKER RIDING SEASON: Red stickers are allowed to operate in the SVRA from October 1st - May 31st. These dates are established by the California Air Resources Board (CARB) and are subject to change. Please call the park for updated information.

SPEED: Please follow posted speed limits throughout the park. In camping and developed areas, keep speeds to 15 mph or less. Never drive faster than is safe for conditions.

SPARK ARRESTERS: All vehicles operating off-highway must be equipped with either a street legal muffler or a spark arrester maintained in effective working order.

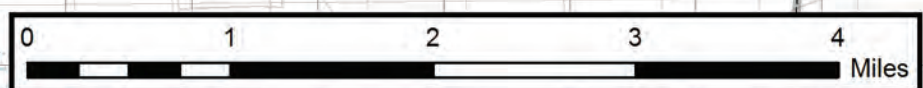
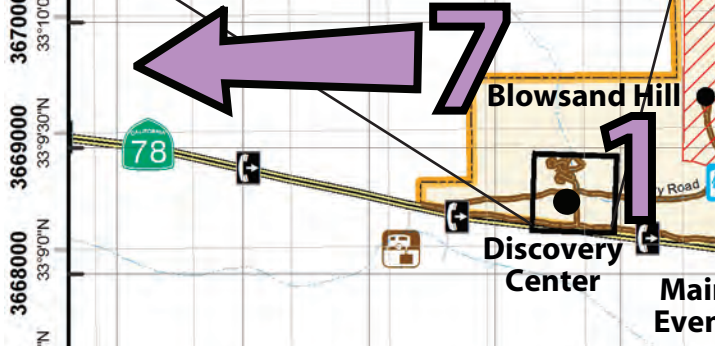
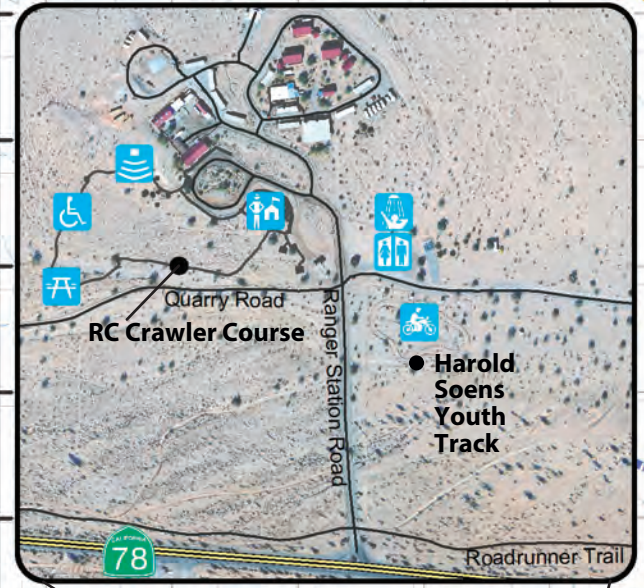
SUSPENDED OR REVOKED LICENSE: Anyone whose driving privileges have been suspended or revoked is prohibited from operating any motor vehicle, on- or off-highway.

VEGETATION: It is illegal to run over vegetation.

Ocotillo Wells SVRA Map Legend

- Highway
- Local Streets
- Off-Highway Vehicle Trail
- Anza National Historic Trail
- No Camping, Alcohol, or Fires
- Travel on Trails and Roads Only
- Distributed Riding (Open)
- Points of Interest
- Land Marks
- Amphitheater
- Call Box
- Fire Station
- Fuel
- Interpretive Display
- Ranger Station / Discovery Center
- Restrooms
- RV Dump
- Showers
- Training Track
- Accessible Feature
- Picnic Area

Locations of features are representations. Actual locations of some features may vary over time as a result of weather, maintenance, and other factors. Use appropriate caution when traveling through the park. Areas within Ocotillo Wells SVRA may contain private or Federal land. Observe all signage.



116°12'30"W 116°12'00"W 116°11'30"W 116°11'00"W 116°10'30"W 116°10'00"W 116°9'30"W 116°9'00"W 116°8'30"W 116°8'00"W 116°7'30"W 116°7'00"W 116°6'30"W 116°6'00"W 116°5'30"W 116°5'00"W 116°4'30"W 116°4'00"W 116°3'30"W 116°3'00"W 116°2'30"W 116°2'00"W 116°1'30"W 116°1'00"W 116°0'30"W 116°0'00"W 115°59'30"W 115°59'00"W 115°58'30"W 115°58'00"W 115°57'30"W 115°57'00"W 115°56'30"W 115°56'00"W 115°55'30"W 115°55'00"W 115°54'30"W 115°54'00"W 115°53'30"W 115°53'00"W 115°52'30"W 115°52'00"W 115°51'30"W 115°51'00"W 115°50'30"W 115°50'00"W