

# WHERE ARE THE FLOWERS?

Ocotillo Wells SVRA, 5172 Hwy. 78, Borrego Springs, CA 92004

## Enjoy and Protect our Wildflower Bloom

### Enjoy the Bloom Safely:

- Bring water and food. Drink water frequently. Don't save it for later.
- Wear sunscreen, a hat and layers; the weather can change quickly.
- Wear closed-toed shoes; the desert can be "pokey."
- Stay on two-wheel drive roads unless you have a high-clearance, four-wheel drive vehicle.

### Share the Bloom:

- Take photos and share them on Ocotillo Wells SVRA's Facebook Page.
- Drones are not allowed in the Park
- Please do not pick the flowers; leave them for all visitors to experience.

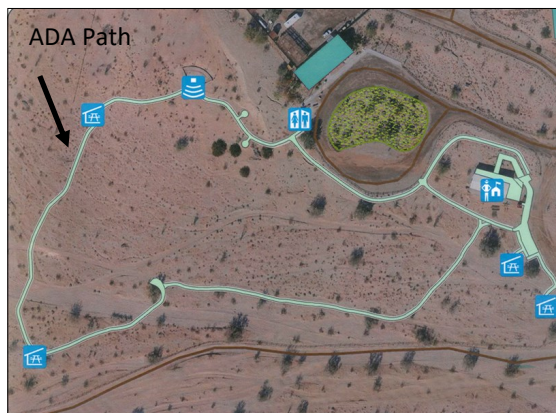
### Protect the Bloom:

- Tread lightly and stay on trails. Be careful not to walk on the blooms.
- Pack it in and pack it out; take your trash with you.
- Dogs are only allowed on Park roads and on a 6-foot leash at all times.

## Discovery Center Paved ADA Path

Follow the paved path to the left at the bottom of the Discovery Center ramp.

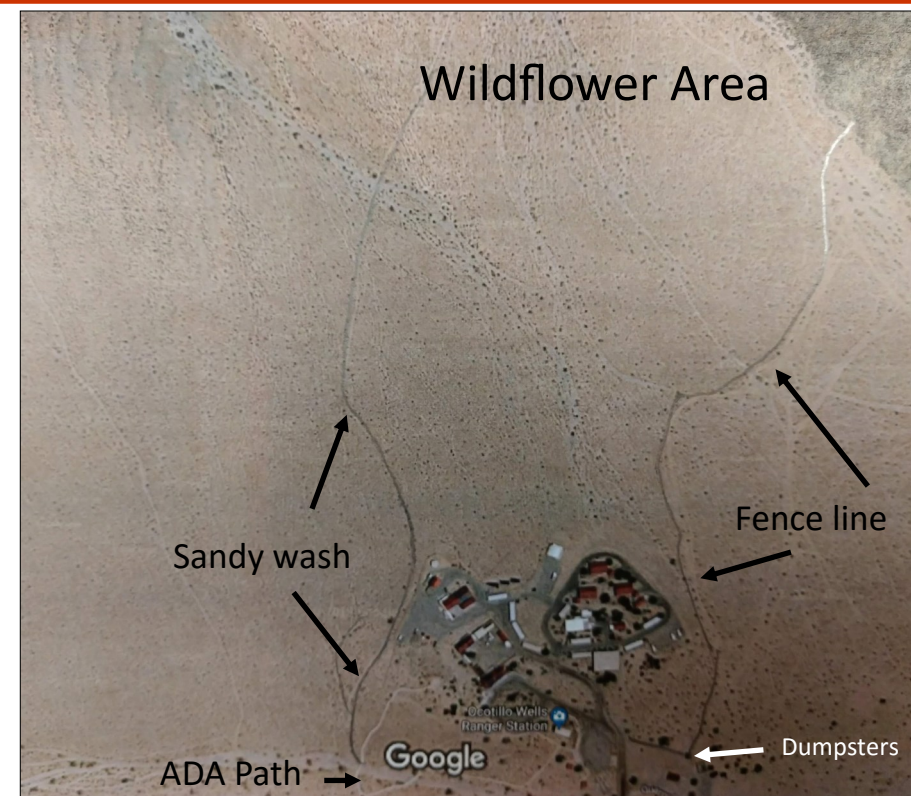
At the back end of the loop, there are several washes off the paved path you may follow north toward the base of East Butte.



## East Butte

Park at the Discovery Center Parking area and walk east toward the blue dumpsters.

Turn left and follow the fence line about 1/2 mile north to the base of East Butte. Go through the opening in the fence and walk along the wash toward the west. Follow one of the washes up to the top and drop down into the wash just north and walk back to the fence.





# WHERE ARE THE FLOWERS?



## Devil's Slide — 4x4 Vehicles Required

From the Discovery Center parking lot, turn right and then left between the restroom building and the Soens Youth Track on Quarry Road.

Follow Quarry Road to Shell Reef Expressway. Bear right on Shell Reef Expressway

At the 1.4 Carsonite marker (see photo), drive about 100 feet ahead. On the left side, off the road, you will see delineators. Park by those markers and follow the delineators on foot over the hill to the flower fields.

