

STATE HISTORICAL RESOURCES COMMISSION



Bungalow Heaven Historic District, Pasadena, Los Angeles County,
California

2008 ANNUAL REPORT

Office of Historic Preservation
California State Parks
The Resources Agency
State of California

January 2009



This publication has been financed in part with federal funds from the National Park Service, U.S. Department of the Interior. However, the contents and opinions do not necessarily reflect the views or policies of the Department of the Interior, nor does the mention of trade names or commercial products constitute endorsements or recommendations by the Department of the Interior. This program received federal financial assistance for identification and protection of historic properties. Under Title VI of the Civil Rights Act of 1964, Section 504 of the Rehabilitation Act of 1973 and the Age Discrimination Act of 1975, as amended, the U.S. Department of the Interior prohibits discrimination on the basis of race, color, national origin, disability, or age in its federally assisted programs. If you believe you have been discriminated against in any program, activity, or facility as described above, or if you desire further information, please write to: Office of Equal Opportunity, National Park Service, 1849 C Street, NW, Washington, D.C. 20240.

STATE HISTORICAL RESOURCES COMMISSION



Photograph 1. Orange Lawn, Sonoma, Sonoma County, California

2008 ANNUAL REPORT

Office of Historic Preservation
California State Parks
1416 9th Street, Room 1442
Post Office Box 942896
Sacramento, California 94296-0001
Phone: (916) 653-6624
Fax: (916) 652-9824
Website: www.ohp.parks.ca.gov

January 2009

**OFFICE OF HISTORIC PRESERVATION
DEPARTMENT OF PARKS AND RECREATION**

P.O. BOX 942896
SACRAMENTO, CA 94296-0001
(916) 653-6624 Fax: (916) 653-9824
calshpo@ohp.parks.ca.gov



January 1, 2009

The Honorable Ruth Coleman
Director, California State Parks
Post Office Box 942896
Sacramento, CA 94296-001

RE: *State Historical Resources Commission's 2008 Annual Report*

Dear Director Coleman:

On behalf of my colleagues serving on the State Historical Resources Commission (Commission), I wish to convey the gratitude of the Commission for the long-term support you have shown for the Commission and its closely allied state office, the Office of Historic Preservation (OHP). The Commission and OHP work together extraordinarily well, but neither could succeed in its historic preservation mission without strong support from State Parks.

At our last quarterly meeting I was elected Chairperson and I am looking forward to working with my fellow commissioners to achieve our goals for 2009. We are also looking forward to working with the State Historic Preservation Officer and his staff to further historic preservation throughout California and address the goals set forth in the State Historic Preservation Plan.

Please find herewith the Commission's *2008 Annual Report* that includes a summary of the Commission's accomplishments in 2008 and its goals and objectives for the coming year. This report documents the accomplishments of what was a very busy year for the Commission. We held our four meetings alternating between northern and southern California. We were excited to hear nominations that touched the communities where the properties were located and the owners of such wonderful historic sites.

Please accept this report on the annual achievements for the Commission. Again, we thank you for your support in the past and look forward to working very closely with you in the future.

Sincerely,

A handwritten signature in black ink, appearing to read "Julianne Polanco".

JULIANNE POLANCO
Chairperson

Table of Contents

| | |
|--|----|
| Introduction | 1 |
| Members and Disciplines | 2 |
| Accomplishments of the Commission 2008..... | 5 |
| Meetings Held in 2008 | 6 |
| Nominations Heard by the Commission | 11 |
| National Register of Historic Places | 12 |
| California Register of Historical Resources | 29 |
| California Points of Historical Interest | 36 |
| State Historical Resources Commission Committee Activities | 39 |
| Program and Legislative Goals | 41 |
| 2008 Goals and Status..... | 41 |
| 2009 Program and Legislative Goals | 42 |
| Legislative Summary for 2008..... | 45 |
| Resolutions Adopted in 2008 | 46 |

Introduction

The State Historical Resources Commission is pleased to present its 2008 Annual Report to the Director of California State Parks and to the California State Legislature. The Annual Report summarizes the activities of the State Historical Resources Commission in 2008, identifies future preservation goals for 2008, and recommends historic preservation legislation pursuant to the provisions of PRC, Section 5020.4 (m). A complete description of the powers and duties of the State Historical Resources Commission is provided in Section 5024.2-4 of the Public Resources Code.



Photograph 2. State Historical Resources Commission, Office of Historic Preservation Staff, and members of the public pose at the site of Pasadena City Hall, Pasadena, January 31, 2008.

Members and Disciplines

The State Historical Resources Commission (Commission) is comprised of nine members, appointed by the Governor of California, who serve four year terms. Five commissioners are specialists in the fields of history, prehistoric archaeology, historical archaeology, architectural history, and architecture. Two commissioners are experienced professionals in ethnic history and folklife. The two remaining commissioners are citizen members.

2008 STATE HISTORICAL RESOURCES COMMISSION MEMBERS

Commissioner Alberto Bertoli, AIA is from San Francisco. He was appointed in October 2006 to fulfill the architecture position on the Commission. He has served as director and faculty member at the Academy of Art University Graduate School of Architecture since 2004 and architect with Patri Merker Architects since 1997. Previously, he was self-employed as a design architect and consultant from 1991 to 1996 and architect with Arthur Erickson Architects from 1981 to 1991. Commissioner Bertoli's term will end in October 2010.

Commissioner Bryan K. Brandes is a citizen member of the Commission. Commissioner Brandes is from Temple City, and has served the transportation and shipping company Maersk since 1996, currently as the director of California regional dispatch. Prior to that, Brandes was dispatch and dock supervisor for Roadway Express from 1994 to 1996. Commissioner Brandes was appointed in October 2006, and his term will end in October 2010.

Commissioner Trish Fernandez is an archaeologist and fulfills the historical archaeology position on the Commission. Commissioner Fernandez, of Placerville, was appointed in November 2005 and her term will expire in November 2009. Professionally she serves as an environmental consultant specializing in cultural resources management for ICF Jones & Stokes. Previously, she served as environmental review specialist for the El Dorado Irrigation District, historical and local government program director for Pacific Legacy, archaeologist for Eldorado National Forest, and legislative aide for California Rural Legal Assistance & Hopcraft Communications. She earned a Bachelor of Arts and Masters of Arts degrees in Anthropology from California State University, Sacramento.

Commissioner Donn Grenda, Ph.D. is an archaeologist from Redlands. He serves the Commission in the discipline of prehistoric archaeology. Commissioner Grenda was appointed in November 2005 and his term expires in November 2009. Commissioner Grenda is president and chief executive officer of Statistical Research, Inc. and is an adjunct professor in the Department of Sociology/Anthropology at the University of Redlands. Previously, he served as director, principal investigator/project manager and project director of the California Office of Statistical Research, Inc. Commissioner

Grenda earned a Bachelor of Arts degree in Anthropology and Economics from the University of Redlands, a Master of Arts degree in Anthropology from the College of William and Mary, and a Ph.D. in Anthropology from the University of Arizona.

Commissioner Fernando Guerra, Ph.D. fulfills the folklife position on the Commission. He was appointed in November 2005 and his term will expire in November 2009. Commissioner Guerra is from Los Angeles and has served as director for the Thomas and Dorothy Leavey Center for the Study of Los Angeles at Loyola Marymount University since 1996, and is an associate professor in the Department of Chicano Studies and Political Science. Commissioner Guerra is a member of the American Political Science Association, the National Association for Chicano Studies, the Western Political Science Association, and the Political Council of the International Policy National Civic League. He earned a Bachelor of Arts degree in Political Science and International Relations from the University of Southern California, a Masters of Arts degree and a Ph.D. from the University of Michigan, Ann Arbor.

Commissioner Rick Moss of Alameda serves as the historian on the Commission. He was appointed in November 2005 and his term will expire November 2009. Professionally Commissioner Moss has served as director of the African American Museum and Library in Oakland since 2001. He is a member of the board of directors of the California Council for the Promotion of History, the Program Review Committee for Western Museums Association, the Curators Committee for American Association of Museums and the City of Oakland Public Art Advisory Committee. He earned his Bachelor of Arts and Masters of Arts degrees in history from UCLA.

Commissioner David Phoenix was appointed in September 2006 and his term will expire in September 2010. He fulfills the public member position on the Commission. Commissioner Phoenix is from Los Angeles and has served as president of the interior design firm David Phoenix Incorporated since 1996. Previously, he was a sales and design representative for Ralph Lauren Home Furnishings from 1990 to 1993, sales representative for Pierre Deux, a high end French fabric company from 1989 to 1990 and sample librarian for Braunschwig & Fils, a wholesale interior design supplier from 1987 to 1990.

Commissioner Julianne Polanco was appointed in November 2005 and her term will expire November 2009. Commissioner Polanco, of San Francisco, serves as the architectural historian on the Commission. She is the Director of Cultural Resources for Actus Lend Lease, and was previously the Senior Preservation Specialist for the Presidio Trust. Commissioner Polanco also served as Assistant to the Vice President for Programs at World Monuments Fund, Project Manager for Townscape Institute, and Advisor to the Chairman of the California Integrated Waste Management Board. She earned a Bachelor of Arts degree in Political Science and International Relations from the University of California, Santa Barbara, and a Masters of Science degree in Historic Preservation from Columbia University.

Commissioner Richard Shek, Ph.D., of Carmichael, fulfills the ethnic history discipline on the Commission. He was appointed in November 2005 and his term will expire in November 2009. Commissioner Shek has served as professor of Humanities and Religious Studies at California State University, Sacramento, since 1976. He is a member of the Association for Asian Studies and the Association of Taoist Studies in Japan. Commissioner Shek earned a Bachelor of Arts degree from International Christian University of Japan, a Master of Arts degree from University of California at Davis, and a Ph.D. from University of California at Berkeley.



Photograph 3. Gliders soaring above the cliffs at the Torrey Pines Gliderport in La Jolla, San Diego County, California

Accomplishments of the Commission 2008

The Commission served as a catalyst for collecting, disseminating, and documenting historic preservation programs, issues, and concerns in California through the considerable accomplishments in 2008. The specific accomplishments of the Commission are highlighted in the following sections:

- Meetings Held in 2008
- Nominations Heard by the Commission
- Preservation Grant Funds for Certified Local Governments
- Committee Activities



Photograph 4. Members of State Historical Resources Commission and Office of Historic Preservation Staff at the July 25th State Historical Resources Commission meeting held in the Chapel El Presidio de Santa Barbara State Historic Park.

Meetings Held in 2008

Section 5020.3(a) Public Resources Code states: “The State Historical Resources Commission shall meet at least four times per year in places it deems necessary to fulfill its responsibilities.” The Commission held quarterly Commission meetings in both the northern and southern sections of the State. Commission meetings served as a public forum to report on the quarterly preservation activities of the Commission Chairperson, Commission Executive Secretary, and Commission committees.

2008 Commission Meeting Location Table

| Date | Meeting Type | Location |
|------------------|---------------------|--|
| January 31, 2008 | Workshop | Pasadena City Hall Colorado Room S116 City Council Chambers 100 North Garfield Avenue Pasadena, CA 91109 |
| February 1, 2008 | Commission Meeting | Pasadena City Hall City Council Chambers 100 North Garfield Avenue Pasadena, CA 91109 |
| April 22, 2008 | Workshop | St. Helena Public Library 1492 Library Lane St. Helena, CA 94574 |
| April 23, 2008 | Commission Meeting | Napa City Hall Council Chambers 955 School Street Napa, CA 94559 |
| July 24, 2008 | Workshop | Marisol Room Inn of the Spanish Garden 915 Garden Street Santa Barbara, California 93102 |
| July 25, 2008 | Commission Meeting | The Chapel El Presidio de Santa Barbara State Historic Park 123 East Canon Perdido Santa Barbara, CA 93101 |
| November 6, 2008 | Workshop | Locke Boarding House 13913 River Road Locke, California 95690 |
| November 7, 2008 | Commission Meeting | Resources Building Auditorium 1416 9th Street, First Floor Sacramento, California 95814 |



Photograph 5. Residence in the Pegfair Estates Historic District, Pasadena, California.

Esteemed guests and important partners in preservation welcomed the Commission to the host cities. In February, **Bill Bogaard**, Mayor of the City of Pasadena, welcomed the Commission to Pasadena and thanked them for holding their meeting in Pasadena which is so rich in history and historical resources.

Juliana Inman, City of Napa Councilmember, welcomed the Commission to the City of Napa in April. **Cindy**

Heitzman, Executive Director of California Preservation Foundation (CPF), and **Paige Swartley**, President of CPF, in Napa for the annual CPF conference, added their welcome to the Commission and expressed hope that the Commission would be attending the conference.

Jerrell Jackman, Ph.D., Executive Director of Santa Barbara Trust for Historic Preservation (SBTHP) welcomed the Commission to the City of Santa Barbara during their July meeting and thanked the Commission for holding their meeting in the Chapel El Presidio de Santa Barbara State Historic Park. Dr. Jackman introduced **Marty Blum**, Mayor of Santa Barbara, who added her welcomed and appreciation to the Commission for holding their quarterly meeting in the City of Santa Barbara. In November, Michael Harris, Acting Chief Deputy Director, California Department of Parks and Recreation, welcomed the Commission to Sacramento.

The Commission invited qualified individuals representing non-profit organizations, governmental agencies, and private industries to speak on historic preservation subjects.

At the February and July meetings, Gini Austerman from the **Norco Regional Conservancy** gave the Commission an update on the Conservancy's progress in the preservation of the Lake Norconian Club, an issue brought to the Commission's attention in 2007. At the July meeting, Kevin Bash from the **Lake Norconian Club Foundation** invited the commission to tour the facility. Chairman Grenda informed the attendees that he and Deputy SHPO **Stephen Mikesell** has been working together in

writing a letter demonstrating the Commission's support for the preservation of the Lake Norconian Club property.

The Commission had the opportunity to tour many wonderful historic properties and sites in and near the host cities and attend several receptions held in their honor after Workshop meeting.



Photograph 6. Commissioners and Staff on tour at the Rose Bowl, Pasadena, Los Angeles County, California

In February, Steve Wright, Engineer for the City of Pasadena, lead the Commission on a tour of the recently-rehabilitated **Pasadena City Hall**. Sue Mossman and Christine Lazzaretto with **Pasadena Heritage**, led the Commission on a tour of the Pasadena's **Central Arroyo Park**, which included a special tour of the **Rose Bowl** led by Teresa Grimes, Architectural Historian with Christopher Joseph and Associates.

Mary Jo Winder of Architectural Preservation Planning Services conducted a walking tour through

Bungalow Heaven Historic District, a multiple-block district with numerous bungalow examples which was listed in the National Register of Historic Places April 10, 2008. The afternoon of tours ended at a reception held for the Commission hosted by Pasadena Heritage at the home of Richard Norton, a private residence designed by **Greene and Greene**.



Photograph 7. Bungalow Heaven Historic District, Pasadena, Los Angeles County, California



Photograph 8. Bale Grist Mill State Historic Park, near St. Helena, Napa County, California

In April, the Commission had the pleasure of touring the **Bale Grist Mill State Historic Park** near St. Helena. Leading the tour were **California State Parks** rangers, Eileen Bieckeli, Ranger Sandy Jones, Park Maintenance Supervisor, Larry Vietti, and State Parks and Recreation Specialist Eric Gerhardt, and Gene Sneed.

Naomi Miroglio led the tour of the former **Greystone Winery** in St. Helena, which now houses the

Culinary Institute of America. The day ended with a reception for the Commission hosted at **Beringer Winery** in St. Helena.

After the July workshop meeting, the Commission toured the **El Presidio de Santa Barbara State Historic Park** led by **Jerrell Jackman, Michael Imwalle, Anne Petersen, and Mary Louise Days** of SBTHP, and showcased the Trust's Greening Project, the reconstructed Research Center, the site of Jimmy's Oriental Gardens,



Photograph 9. Jimmy's Oriental Gardens, Santa Barbara, California

the last remnant of Santa Barbara's Chinatown and acquired by the Trust in 2007. After visiting the Casa de la Guerra Historic House Museum, the Commission attended a reception hosted by the **SBTHP** board at the **Casa del la Guerra Historic House Museum**.

In November, the Commission toured the Sacramento-San Joaquin River Delta towns of Locke, Isleton, and Walnut Grove. **Clarence Chu** and **Albert Gee** led the Commission on a tour of the town of Locke. **John Perez, Sharon Fong** and **Charlene Anderson** of **Isleton Brannan-Andrus Historical Society** gave the Commission tour of Isleton Main Street.



Photograph 10. Commissioners and Staff touring Locke

Nominations Heard by the Commission

The Commission is responsible for reviewing, commenting, and approving or not approving nominations to the National Register of Historic Places, California Register of Historical Resources, California Historical Landmarks, and California Points of Historical Interest. The Commission recommends properties for listing in the National Register of Historic Places. Those approved for listing or determined eligible for listing by the National Park Service are also listed in the California Register of Historical Resources. Properties recommended and approved for listing by the Commission as California State Historical Landmarks and California State Points of Historical Interest are also listed on the California Register of Historical Resources.

The Commission heard twenty-four National Register of Historic Places nominations, and recommended twenty-one properties for listing; approved six properties for listing on the California Register of Historical Resources; and approved for designation four California Points of Historical Interest. The following pages contain a summary of each registration program and the nominations heard by the Commission in 2008. All nominations were approved by the Commission except for four, as noted in the summaries below.



Photograph 11. Streetscape from the Uptown Tenderloin Historic District, San Francisco, San Francisco County, California

National Register of Historic Places

The National Register of Historic Places (National Register) is the nation's official listing of buildings, structures, objects, sites, and districts worthy of preservation because of their significance in American history, architecture, archaeology, engineering, and culture. The program was authorized under the National Historic Preservation Act of 1966. The National Register recognizes resources that have local, state, and national significance.

Properties listed in the National Register are evaluated within a historic context and must meet at least one of the four registration criteria:

- **Criterion A** recognizes properties associated with events that have made a significant contribution to the broad patterns or our history.
- **Criterion B** recognizes properties associated with the lives of persons significant in our past.
- **Criterion C** recognizes design and construction. Properties listed under this criterion embody the distinctive characteristics of a type, period, or method of construction, or that represent the work of a master architect, or that possess high artistic values, or that represent a significant and distinguishable entity whose components may lack individual distinction.
- **Criterion D** is for properties that have yielded, or may be likely to yield information important in prehistory or history. This criterion is used extensively for archeological sites and districts.

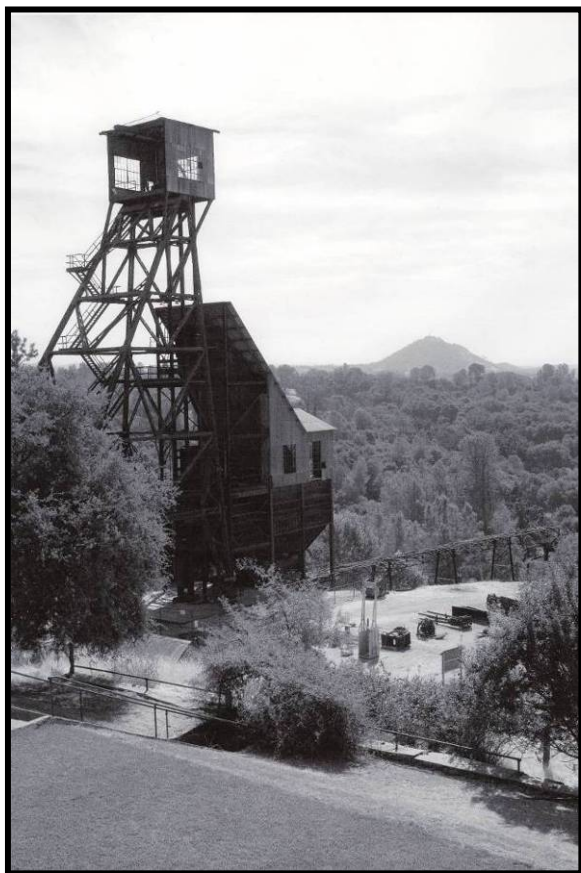
In addition to being significant within a specific historic context, a property must also retain sufficient integrity in order to convey its significance. The National Register has seven aspects of integrity: location, design, setting, materials, workmanship, feeling, and association.

As California's review board, the Commission has the responsibility to review National Register nominations and decide whether or not the nomination meets the criteria for evaluation prior to it being submitted to The Keeper of the Register (The Keeper) at the National Park Service. The Commission's approval is a recommendation to the State Historic Preservation Officer, Milford Wayne Donaldson, FAIA, to forward the nomination for final approval by The Keeper of the Register.

OHP staff presented twenty-five National Register nominations to the Commission at its four quarterly meetings. Nominated properties represented a variety of historic resources located throughout the State and included examples of residential and commercial districts, recreation properties, mining properties, civic buildings, and individual houses and commercial properties.

The following properties were heard by the Commission in 2008.

AMADOR COUNTY



Photograph 12. Kennedy Mine Historic District, Amador County, California

The **Kennedy Mine Historic District** is located in the Sierra foothills about a mile north of the city center of Jackson. The historic district is comprised of seven distinct areas consisting of approximately 152 acres and contains a total of 33 contributing buildings, sites, and structures. Mill tailings overlay depressions and low spots found along drainages ditches throughout the district. The district includes areas of mine dump materials generated from numerous prospects, and cut and fill deposits remaining from excavating the Kennedy Tailing Wheels. The Kennedy Mine Historic District was nominated at the state level of significance under Criteria A and C, and is significant as an excellent example of quartz mining operations during California's signature mining era, operating almost continuously from the gold rush until World War II. The Kennedy Mine also played a significant role in labor relations in California's mining industry and was at the center of the landmark decision that still defines extralateral rights.

LAKE COUNTY



Photograph 13. Lakeport Carnegie Library, Lakeport, Lake County, California

The **Lakeport Carnegie Library**, constructed in 1918, was listed in the National Register at a local level of significance under the registration requirements of the California Carnegie Libraries Multiple Property Documentation (1990). The building is significant under Criterion A in the area of Social History for its role in community development, and under Criterion C as example of Classical Revival style of architecture.

LOS ANGELES COUNTY



Photograph 14. Bungalow Heaven Historic District, Pasadena, Los Angeles County, California

Bungalow Heaven Historic District was listed in the National Register April 10, 2008 under Criterion C at the local level of significance under the Multiple Property Documentation, "The Residential Architecture of Pasadena, California, 1895-1918: The Influence of the Arts and Crafts Movement." The historic district is significant as the largest intact grouping of working class housing constructed during the late nineteenth

and early twentieth centuries reflecting the influences of the Arts and Crafts movement in Pasadena.

The **Holmes-Shannon House**, built in 1911, is a product of the dissemination of the Arts and Crafts philosophy and aesthetic in America and is a good example of the craftsmanship of a locally prominent architectural firm, Train and Williams. The property was listed in the National Register under Criterion C at the local level of significance in the area of Architecture March 26, 2008.



Photograph 15. The Holmes-Shannon House, Los Angeles, Los Angeles County, California



Photograph 16. Apartments at 1342-1346 N. Hayworth Ave., West Hollywood, Los Angeles County, California

The Apartments at 1342-1346 N. Hayworth Avenue were nominated to the National Register under Criterion C at the local level of significance as a good representative example of the Spanish Colonial Revival style courtyard apartment complex, the dominant style for southern California's multi-family dwellings. The property owner objected to the nomination. The Commission determined the property did not meet the National Register Criteria and recommended the State Historic Preservation Officer not approve the nomination for forwarding to the National Park Service.

The nomination for the **Apartments at 1342-1346 North Hayworth Avenue** in West Hollywood was heard at the February 1st and April 23rd SHRC meetings. This L-shaped, small multi-family courtyard style apartment complex consisting of two contributing apartment buildings and one contributing one-story garage constructed in 1924 in a modest Spanish Revival style. Within the boundary is one non-contributing garage that was constructed in 1953. The

The **Pasadena Arroyo Parks and Recreation District** is located on the western edge of the City of Pasadena and includes two distinct geographical areas, the Lower Arroyo,



Photograph 17. Pasadena Arroyo Parks and Recreation District, Pasadena, Los Angeles County, California

features are the small buildings around the Rose Bowl Stadium and the pedestrian

150-acre of natural parkway, and the Central Arroyo, a 550-acre multi-facility urban park with golf courses, Rose Bowl Stadium; Brookside Park, a Theater; baseball stadium, and a horticultural center. The Pasadena Arroyo Parks and Recreation District contains 25 contributing building, sites, and structures and 57 non-contributing buildings sites, and structure within the entire 700-acre district.

Most of the noncontributing

bridges over the non-contributing flood control channel. Pasadena Arroyo Parks & Recreation District was nominated to the National Register at the local level of significance under Criterion A in the areas of entertainment and recreation for its association with the development of Pasadena as a recreational mecca. The parks and recreation facilities and the public open space in the District remain Pasadena's most prized and enviable recreational and natural resources. The Commission determined the district met National Register Criterion A and recommended the State Historic Preservation Officer approve the nomination for forwarding to the National Park Service for listing in the National Register.



Photograph 18. Pacific Electric Building, Los Angeles, Los Angeles County, California

The **Pacific Electric Building** was constructed in 1905 as an office building with an electric rail depot at ground level. It contains nine stories with a lower basement level, and a modified mezzanine. Designed by local architect Thornton Fitzhugh, the building exhibits elements of Richardsonian Romanesque and Beaux Arts styles. Following an extensive rehabilitation, the Pacific Electric Building was converted from its former use as an office building and transit station to a multi-family



Photograph 19. Interior Pacific Electric Building, Los Angeles, Los Angeles County, California

residential structure. It reopened in 2005. The adaptive reuse project was completed in adherence to the Secretary of the Interior's Standards for Rehabilitation and retains a high degree of historic integrity of location, setting, design, workmanship, material, feeling and association. The Pacific Electric Building was nominated to the National Register for listing under Criteria A at the local level of significance, with 1905-1950 as the period of

significance. The Pacific Electric Building derives historical significance in the area of transportation for its association with the Pacific Electric Railway interurban railway system and, subsequently, the Southern Pacific

Railroad and also derives historical significance in the area of social history as the home of the Jonathan club, an exclusive men's social club founded in 1895 for the Republican supporters of William McKinley.

The Commission heard the **Cultural Resources of the Recent Past, City of Pasadena Multiple Property Submission** at the November 7, 2008 meeting.

Introduced by the National Park Service (NPS) in 1984, the Multiple Property (MPS) the MPS consists of two components: the Multiple Property Documentation Form (MPDF), a cover document containing information common to the group of related properties; and individual registration forms or nominations containing information specific to each property. It is used to register thematically-related properties simultaneously and establishes the registration criteria for properties that may be nominated in the future. The Cultural Resources of the Recent Past, City of Pasadena MPS MPDF identified two historic contexts: Residential Architecture of the Recent Past in Pasadena between 1935 and 1968; and Mid-Century Modernism in the Residential Work of Buff, Straub & Hensman in Pasadena between 1948 and 1968. In Pasadena, Modernism was informed by the Arts and Crafts Movement, which was firmly rooted in the city's history. The local Modern aesthetic used wood framing and the use of natural materials instead of the steel and cool geometry of other Modern structures. The Modernist houses of Pasadena are characterized by thoughtful design, attention to detail, the use of built-in furniture and a visual connection between indoor and outdoor space. The term "Pasadena" or "USC style" Modernism reflects the impact of graduates of the University of Southern California's School of Architecture (many of whom lived and worked in Pasadena) on the architectural landscape of the region. The Pasadena style reflects the unique combination of factors that contributed locally to the City's postwar architecture. The Pasadena Modernism practiced by Buff, Straub & Hensman also reflects the Arts and Crafts movement in its emphasis on buildings integrated into landscape.

The MPDF identifies one associated property type, "Single Family Residences in Pasadena." This property type refers to a detached residence, typically one- or two-story, designed for a specific client and specific lot by an architect or building designer in various styles identified within the two historic contexts. These houses express qualities and features emerging from their shared period of significance and their geographical location in Pasadena. They reflect an architectural response to the unique circumstances, opportunities, and challenges of a twentieth century, post-World War II Pasadena.

Following, are the seven individual nominations, five single resource properties and two districts, heard by the Commission in association with the Cultural Resources of the Recent Past, City of Pasadena MPS.



Photograph 20. Frank House, Pasadena, Los Angeles County, California

Frank House, constructed in 1957, is an early example of Buff, Straub & Hensman. The 4,700-square foot residence is also one of the firm's largest, most "villa-like" residential commissions. Sam Maloof and John Kappel were among the furniture designers who developed pieces specifically for the house, and the master landscape architecture firm, Eckbo, Dean and Williams designed the landscape. Because of its large size, the prominent site, and complex program, the Frank House demonstrates the way that local and strong influences were

not imposed but thoughtfully integrated into a Modernist example of the post-and-beam construction technology popularized by the USC/Pasadena Schools after World War II.

Gill House is a 2,600-square-foot, post-and-beam, flat-roofed, one-story house on a gently sloping "flag" lot located on the hills in the Linda Vista area of west Pasadena. The house is marked by strong, bold horizontal lines, many experimental materials, subtle change in elevation, and volumes that project from the larger enclosure as either exterior or interior rooms. This house reflects masterful work, a close collaboration with their client, and incorporates highly custom work, rich and/or avante materials, and extensive landscaping. As with most Buff, Straub, & Hensman designs, the house both feels embedded in nature while taking advantage of sweeping views of the mountains, using glass for view walls and translucent or opaque walls elsewhere. The Gill House is one of Buff, Straub & Hensman's masterworks.



Photograph 21. Gill House, Pasadena, Los Angeles County, California

Mello House, completed in 1957, is a post-and-beam, low-pitched roof, one-story house constructed on a unique plan comprised of a pinwheel shape of two back-to-back “L”s. The arrangement provides a central yard/courtyard leading to the informal family entrance and the large family room/kitchen. The Mello House is particularly significant in that it demonstrates the flexibility of the modular post-and-beam construction technique developed by Buff, Straub & Hensman.



Photograph 22. Mello House, Pasadena, Los Angeles County, California



Photograph 23. Norton House, Pasadena, Los Angeles County, California

Norton House is another one of Buff, Straub & Hensman’s masterworks. The wood-and-glass one-story house is distinguished from other Buff, Straub & Hensman houses of the period because the one-level house is a simple rectangle parallel to Burleigh Road with a few bump-out volumes cantilevered from the main box. Here, extensive terracing, stepping stones and broad staircases animate the relationship between house and slope, instead of the house stepping down the hill in articulated volumes as in other Buff, Straub & Hensman designs, or in houses that are pinwheel in plan.



Photograph 24. Pike House, Pasadena, Los Angeles County, California

Pike House is a 1,700-square-foot, post-and-beam house on a short, steep cul-de-sac. It is T-shaped in plan, one story, and has a flat roof. These features contribute to its sense as a “classic” mid-Century house with spare, long lines, without allusions to Craftsman or Japanese aesthetics, in contrast to some other Buff, Straub, and Hensman houses. Like the Mello and Frank houses, the Pike House has a long, shaded processional entrance alongside a primary

volume, the master bedroom wing, which is protected by visual access by a long line of clerestory windows on this public side of the house.



Photograph 25. Representative contributing resource in Pegfair Estates Historic District, Pasadena, Los Angeles County, California

Pegfair Estates Historic District is located in the Linda Vista neighborhood in the western portion of Pasadena. The district consists of twenty-two contributing buildings and three non-contributing buildings. The majority of the houses share a consistent set of design features associated with the post-1955 Contemporary Ranch style. Common design features include: horizontality as seen from the street elevation; low pitched roofs with extended eaves; various cladding such as flagstone, thin scale vertical board and board and batten; and a generous use of

glazing. This district is an intact and expressive example of post World War II Contemporary Ranch houses that also incorporate Asiatic decorative influences. The Commission recommended the State Historic Preservation Officer not approve the nomination for forwarding to the National Park Service.

Poppy Peak Historic District is located in the extreme southwest corner of Pasadena. The district consists of forty-five contributors and fifteen non-contributors. The district is characterized by a high density of excellent examples of Modern twentieth century residential architecture designed by a range of architects, including internationally renowned masters and regionally recognized masters. The district is set within a hillside and the neighborhood and is characterized by narrow streets and erratic front setbacks. The configuration of the neighborhood lent itself to Contemporary Ranch houses and those of the Modern movement.



Photograph 26. Representative contributing resource in the Poppy Peak Historic District, Pasadena, Los Angeles County, California



Photograph 27. Brockman Building and New York Cloak and Suit House (Annex), Los Angeles, Los Angeles County, California

articulate Classical and Romanesque Revival styles in their restrained but elaborate use of Beaux-Arts details and polychromy.

The Commission heard the **Brockman Building and New York Cloak and Suit House (Annex)** at the November 7, 2008 meeting. This pair of connected commercial buildings derives historical significance in the area of community development for their central role affecting the expansion of the City of Angeles' early retail hub away from Broadway to West 7th Street. While the Brockman Building is Classical Revival and the Annex is Romanesque Revival, both have restrained Beaux-Arts detailing. The Brockman Building and Annex was nominated to the National Register for listing under Criteria A and C at the local level of significance. The Brockman Building and Annex derives historical significance in the area of community development for their central role affecting the expansion of the city's early retail hub from Broadway to West 7th Street. The buildings derive architectural significance as excellent examples of their style. The designs for the Brockman Building and Annex fully

The Commission found the **Marguerita Lane Historic District** eligible for listing in the National Register under Criterion C for locally significance as an excellent collection of small-scale Spanish Colonial Revival single-family houses. While there are many distinguished examples of Spanish Colonial Revival style houses in Pasadena, the district is unique in that it was developed between 1927 and 1930 as a unified tract of houses in similar styles and on relatively small lots and remains virtually unchanged.



Photograph 28. Marguerita Lane Historic District, Pasadena, Los Angeles County, California

MONTEREY COUNTY

Monterey County Courthouse, constructed in 1937, is an excellent example of WPA



Photograph 29. Monterey County Courthouse, Salinas, Monterey County, California

Moderne style architecture of the 1930s. The building is embellished with decorative elements fashioned by artist Jo Mora depicting scenes and characters from the history of Monterey County and the western United States. The building design incorporates two and three story U-shape wings constructed around an interior courtyard. The nomination includes a contributing structure: a multi-sided travertine sculpture created by Mora, which is located in the interior courtyard.

The Monterey County Courthouse was nominated for Architecture and Art at the local level of significance as an excellent example of the WPA Moderne style, exhibiting the style's distinctive characteristics of monolithic form, symmetrical facades, simple lines, smooth-finished concrete surfaces, understated ornamentation, incorporated pilasters and square piers. In the area of Art, the building's numerous sculptures, carved bas-reliefs, and travertine marble panels fashioned by Jo Mora decorate and depict the history of Monterey County. The building is the product of a true partnership between architect and artist.



Photograph 30. Relief Detail of the Monterey County Courthouse

ORANGE COUNTY



Photograph 31. Dwella Apartments, Fullerton, Orange County, California

The **Dewella Apartments** were constructed in 1929 in the Spanish Colonial Revival style. The Dewella Apartments were nominated at the local level of significance under Criterion C in the area of architecture. The Dewella Apartments represent the only example of an apartment court in the City of Fullerton. The Dewella is unique for its style and graceful combination of building and landscape, which features sweeping

staircases, symmetrically disposed apartment wings, and formal layout of the garden area in front. Curved staircases sweep up from the central court, the focal point of the complex, to second story Monterey-styled balconies with turned wooden balusters. The use of smooth stucco walls with Mission-style forms for the second story at the front and the Monterey-style balconies is also an effective combination. The Dewella is also a good example of the Spanish Colonial Revival style with touches of Mission and Monterey styles as evidenced in the physical description.

SACRAMENTO COUNTY

Southern Pacific Railroad (SPRR) constructed the **Section Superintendent House** in Folsom in 1915. The house was listed in the National Register on June 13, 2008 under Criterion A, at the local level of significance, in the area of transportation. Folsom was established as the terminus for California's first railroad, the Sacramento Valley Railroad, and the town's railroad association substantially shaped subsequent development.



Photograph 32. Southern Pacific Railroad Section Superintendent House, Folsom, Sacramento County, California

The building is one of the few tangible resources remaining in Folsom that represents the integral connection SPRR maintained with the local Folsom community, and exemplifies the direct presence of the railroad in the lives of its employees. The property was previously determined eligible for the National Register of Historic Places by the State Historic Preservation Officer through a Section 106 consensus determination of eligibility.

SAN BENITO COUNTY

The **San Juan Bautista Third Street Historic District** is the historic commercial district for the rural town of San Juan Bautista. The district contains 33 buildings, 26 of which contribute to its significance. Third Street's commercial development began in 1849 when San Juan Bautista was under American rule, although two buildings included in



Photograph 33. San Juan Bautista Third Street Historic District, San Juan Bautista, San Benito County, California

the district predate that period. Third Street Historic District conveys a visual sense of a small town commercial district established and developed over time. The district represents the American-driven commercial development in San Juan Bautista arising from the Gold Rush economy and continuing through

the early decades of the twentieth century as the center of a largely agricultural-based community.

SAN DIEGO COUNTY

The Commission heard the **Torrey Pines Gliderport (boundary Increase)** nomination at the April 23, 2008 and July 25, 2008 meetings. The property was listed in the National Register in 1993 at the local level of significance under Criterion A in the areas of Entertainment/Recreation, Invention, and Transportation. The period of significance was 1928-1942. The Commission heard a boundary increase nomination this year to include the historic approach surfaces from the westerly and easterly directions of the gliderport. The Federal Aviation Administration (FAA) defines airport approach surfaces

to include a runway protection zone which extends from each runway end as a trapezoid. The trapezoid specific for visual approach airports (such as the case with the Torrey Pines Gliderport) as defined by the FAA was used as an objective measure for the proper definition of both west and east approach surfaces that comprise this boundary increase. The new boundaries were based on historic runway and approach



Photograph 34. Torrey Pines Gliderport (Boundary Increase) La Jolla, San Diego County, California

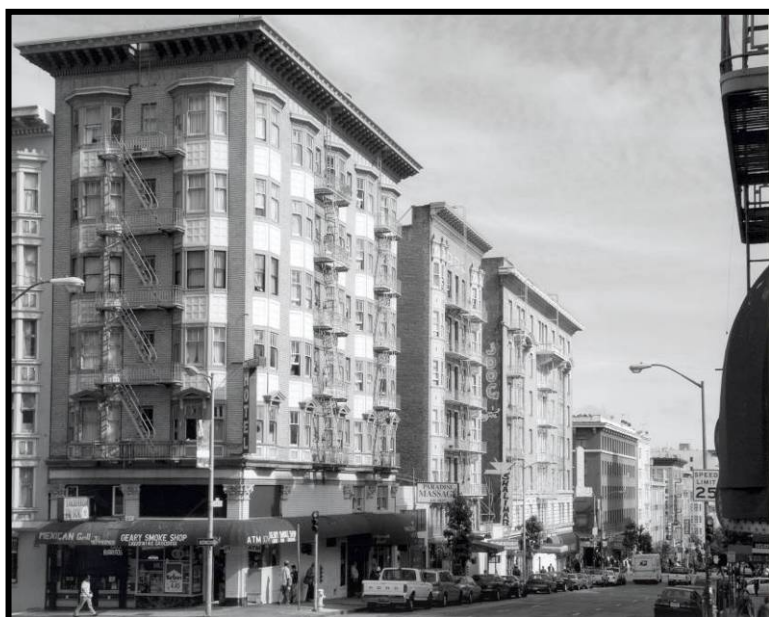
surface configurations at the Torrey Pines Gliderport in the period of significance. In addition the boundary increase properly conforms to runway protection zone dimensions as specified in the United States Department of Transportation, Federal Aviation Administration, Airport Design Document AC 150/5300-13, which specify standards for these areas for the purpose of small aircraft with visual approach such as the historic approaches by sailplanes at the Torrey Pines

Gliderport, which were and remain a consistent feature of this historic aviation facility since the 1930s.

The Commission did not approve the Torrey Pines Gliderport Boundary Increase.

SAN FRANCISCO COUNTY

The **Uptown Tenderloin Historic District** is a largely intact, visually consistent, inner-city high-density residential area constructed during the years between the earthquake and fire of 1906 and the Great Depression. It comprises 18 whole and 15 partial city blocks. The district is formed around its predominant building type: a 3- to 7- story, multi-unit apartment, hotel, or apartment-hotel constructed of brick or reinforced concrete. Because virtually the entire district was

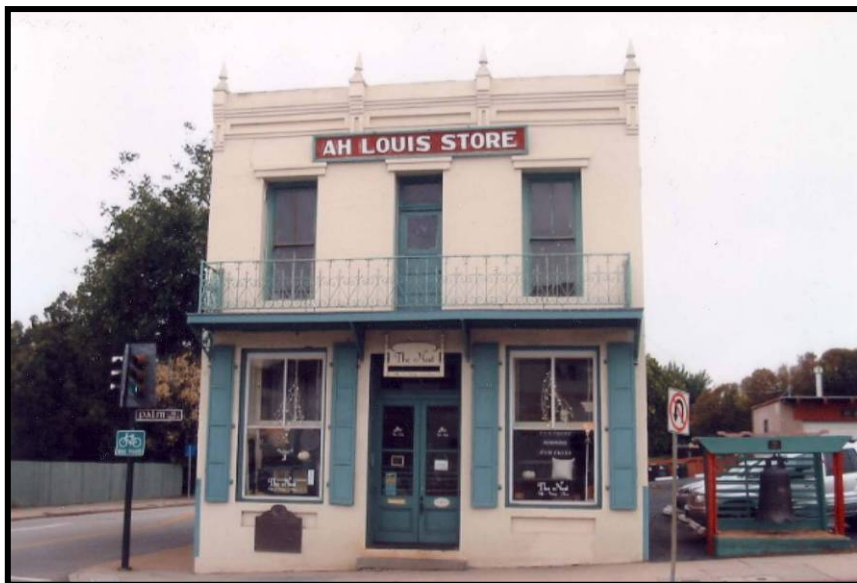


Photograph 35. Uptown Tenderloin Historic District, San Francisco, San Francisco County, California

constructed in the quarter-century between 1906 and the early 1930s, a limited number of architects, builders, and clients produced a harmonious group of structures that share a single, classically oriented visual imagery using similar materials and details. Mixed in among the predominantly residential buildings are examples of other building types that support residential life, including churches, stores, garages, a YMCA complex, and a bathhouse. In addition there are a few building types that are not directly related to the residential neighborhood—machine shops, office buildings, union halls, and film exchanges. There are 410 contributors and 66 non-contributors within the district. The Uptown Tenderloin Historic District was nominated under Criterion A at the local level of significance from for associations with the development of hotel and apartment life in San Francisco during a critical period of change, and under Criterion C in the area of Architecture for its distinctive mix of building types that served a new urban population of office and retail workers.

SAN LUIS OBISPO COUNTY

Ah Louis Store, constructed in 1885, was listed in the National Register at the local level of significance under Criterion A in the areas of Asian ethnic heritage and commerce, and under Criterion B for associations with early Chinese-American pioneer, Ah Louis. Ah Louis is recognized for his significant contributions to the local Chinese and Asian communities in San Luis Obispo as a prosperous businessman who was a successful employer and labor organizer. Ah Louis operated the first Chinese store in San Luis Obispo County, which also acted as the post office and bank for the local Chinese community. The Ah Louis store was the hub of San Luis Obispo's Chinatown. The Ah Louis Store is California Historical Landmark No. 802 and is listed in the California Register.



Photograph 36. Ah Louis Store, San Luis Obispo, San Luis Obispo County, California

SANTA CLARA COUNTY

The **Earl and Virginia Young House** was constructed in 1928 for Earl Young and his family. This Tudor Revival house was nominated at the local level of significance under Criterion C in the area of architecture. The Tudor Revival style emerged in the late nineteenth and early twentieth centuries and is derived primarily from English Renaissance buildings of the sixteenth and seventeenth centuries. By the middle of the twentieth century the style was quite popular among the American middle-class. Character-defining features of the style include steeply pitched gable roofs, stucco siding, and tall narrow windows. The Earl and Virginia Young House retain these features and is a good example of the Tudor Revival residential architecture. The property also meets Criterion Consideration B, Moved Properties because the house and garage were moved to prevent their demolition and its significance lies in its architectural qualities.



Photograph 37. Earl and Virginia Young House, Campbell, Santa Clara County, California

SONOMA COUNTY



Photograph 38. Orange Lawn, Sonoma County, California

Orange Lawn is a Victorian residence, designed in the Italianate style and dates to 1872. Native and exotic trees dating from the nineteenth century grace the grounds of Orange Lawn. The house was renovated in 1996 and it retains integrity of setting, workmanship, materials, feeling and association which convey its significance for architecture within the historic context of Sonoma and the San Francisco Bay area. The property was listed in the

National Register June 9, 2008 at the local level of significance under Criterion C as a good, representative example of Italianate architecture that displays the distinctive characteristics of that style and possessing high artistic value. The building also represents the work of an unknown master craftsman whose sawn ornament achieves significance as sculptural folk art.



Photograph 39. Contributing Resource in the Pasadena Arroyo Parks and Recreation District, Pasadena, Los Angeles County, California

California Register of Historical Resources

The California Register of Historical Resources (California Register) is a program designed by the Commission in 1992 for use by state and local government agencies, private groups, and citizens to identify, evaluate, register, and protect California's historical resources. The program encourages public recognition and protection of resources of architectural, historical, archeological, and cultural significance; identifies historical resources for state and local planning purposes; determines eligibility for state historic preservation grant funding; and affords certain protections under the California Environmental Quality Act.

The Commission is responsible for overseeing the administration of the California Register and receives and evaluates nominations to the program. Similar to the National Register a property listed in the California Register is evaluated within a historic context and must meet one of the registration criteria:

- **Criterion 1** is for the property's association with events that have made a significant contribution to the broad patterns of local or regional history, or the cultural heritage of California or the United States.
- **Criterion 2** is for properties associated with the lives of persons important to local, California, or national history.
- **Criterion 3** is for those properties that embody the distinctive characteristics of a type, period, region, or method of construction, or represents the work of a master architect or possesses high artistic values.
- **Criterion 4** is for properties that have yielded or have the potential to yield information to the prehistory or history of the local area, California, or the nation.

The California Register also requires that the property retain sufficient integrity to its period of significance. The program uses the same seven aspects of integrity as the National Register; however, the California Register allows a property's integrity to be evaluated with reference to the particular criteria under which the property is nominated.

The Commission took action on the following resources.

LOS ANGELES COUNTY



Photograph 40. Upper Reservation of Fort MacArthur Historic District, Los Angeles County, California

The **Upper Reservation of Fort MacArthur Historic District** (Upper Reservation), commonly known as Angels Gate Park, was listed in California Register under Criterion 1 at the local level of significance for associations with military defense of the Los Angeles Harbor and the Metropolitan Los Angeles area against enemy attack. The Upper Reservation played a vital and critical role in maintaining peace and protecting both civilian and military assets in the Los

Angeles area from the time of its initial construction in 1914 through 1975. During its early period, 1914 through World War II, the Upper Reservation was the site of state-of-the-art deployment technological weapons systems ranging from early seacoast artillery gun batteries and fortification. During the Air Defense period (early 1950's to 1975) the United States Army Air Defense Command tested the use of State Army National Guard troops to man and operate the complex Nike Missile Systems. This was a unique first and was latter adopted in almost all of the over 20 air defense sectors throughout the United State. In this context, the Upper Reservation meets Special Consideration 2, historical resources that have achieved significance within the past fifty years.

The **Driftwood Drive-Thru Dairy** in El Monte is composed of three features: two store buildings, a canopy structure, and a pole sign. Constructed in 1961, the Driftwood Drive-thru Dairy met the eligibility requirements for listing in the California Register of Historical Resources under Criterion 3 in the context of roadside architecture and the Space Age style.



Photograph 41. Driftwood Drive-thru Dairy, El Monte, Los Angeles County, California

Roadside architecture developed during the twentieth century in response to the introduction and proliferation of the automobile, which had a profound impact on American culture and the spatial organization of its cities. The automobile required major changes in the infrastructure such as the improvement of roads, the construction of bridges, and the development of the highway network. This new, improved, and automobile-oriented infrastructure transformed the landscape and facilitated the decentralization of cities. Mass automobile ownership also reshaped the built environment by requiring modifications to existing structures and necessitating the development of new building types such as exhibited in the Driftwood Drive-Thru Dairy. The Commission determined the Driftwood Drive-Thru Dairy eligible for listing. It could not be listed because the owners objected.

The Commission determined the **Flower Drive Historic District** eligible for listing in the California Register at the July 25, 2008 meeting. The resource was found significance at the local level for associations with the phenomenal population growth Los Angeles experienced in the 1920s, and the increased construction of high-density housing suitable for working and middle-class families. These patterns of development significantly shaped Los Angeles. By the early 1920s, the influx of new residents to Los Angeles was increasing at an astounding rate that single-family bungalow housing gave way to much higher density housing units. Flower Drive Historic District is a good example of this multiple-family housing, primarily composed of the two-story four-plex that emerged as the most practical and profitable type of multi-family housing for the mid-level market in many parts of Los Angeles.



Photograph 42. Flower Drive Historic District, Los Angeles, Los Angeles County, California

The Flower Drive Historic District was the subject of a Request for Redetermination on the November 7, 2008 agenda. Title 14, California Code of Regulations, Section 4857 provides the Commission's authority regarding Requests for Redetermination. Title 14, California Code of Regulations, Section 4857 states:

Requests for redetermination may be submitted within thirty (30) days after the Commission transmits notice of its final determination. Such requests shall set forth the reasons why the Commission's determination was improper, including all new relevant facts and information.

- (a) The Commission has the power to reverse or alter its prior determinations, in whole or in part, if any of the following occur:
 - (1) There is a significant error in the facts, information, or analysis on which the prior decision was based; or
 - (2) The prior determination, in light of current information, appears to have been arbitrary, capricious, or based on substantial error.
- (b) The Commission shall advise the applicant within sixty (60) days after receipt of a request for redetermination whether it will consider such request, and if so, set the date for a hearing by the Commission.
- (c) If the request for redetermination is denied, then the original determination shall become final for all purposes, unless the resource is later shown to be demolished, altered, or has lost its integrity.

The Commission granted the request for redetermination and reheard the nomination during the November 7, 2008 meeting. The Commission determined the **Flower Drive Historic District** eligible for listing in the California Register. It could not be listed because the owners objected.

MONTEREY COUNTY



Photograph 43. DDH-By-The-Sea, Carmel-by-the-Sea, Monterey County, California

DDH-By-The-Sea is a one-and-one-half story, wood frame building in the English Arts & Crafts architectural style constructed in 1935. The property was nominated under Criterion 3 at the local level of significance in the area of architecture. The English Arts and Crafts style of architecture is a 1930s revival style based on medieval English cottage architecture. DDH-By-The-Sea was executed in an individualistic manner,

combining both Carmel's strong Arts & Crafts building tradition and to the architectural revivalism that coincided with Carmel's advancement as an important summer home location in the 1930s. The Commission listed DDH-By-The-Sea in the California Register.

ORANGE COUNTY

The **Edson House**, located in the Lemon Heights neighborhood near the City of North Tustin in an unincorporated area of Orange County, was constructed in 1933. The Edson House was listed in the area of architecture as an excellent example of Spanish Colonial Revival style architecture. Edson House exhibits numerous character defining features of the Spanish Colonial Revival style, including an



Photograph 44. Edson House, Orange County, California

asymmetrical shape with horizontal massing, cross gable, low-pitched roof with narrow eaves, stucco walls and chimney finishes, arcade walkways, walled courtyards, cast

stonework, patterned tile floors and wall surfaces, balconies, extensive wrought iron trim, and wood casement windows.

RIVERSIDE COUNTY



Photograph 45. Central Fire Station, Riverside, Riverside County, California

Central Fire Station is located on the southwest corner of Mission Inn Avenue and Lime Street in downtown Riverside. The fire station was constructed in 1957 by architect Bolton C. Moise, Jr. and was built by the Cal Construction Company. The

resource was listed at the local level of significance as an excellent example of the International style applied to an institutional building. The City of Riverside experienced a boom in new construction following World War II. To address the expansion of Riverside's population and its need for improved city services a Capital Improvements Program was launched in the early 1950s. Changes in fire fighting technology and practices necessitated a new design in firehouses. The International style lent itself to these needs because the style emphasizes modularity and clean, volumetric forms.

The Commission approved removing the following resources from the California Register of Historic Resources.

SACRAMENTO COUNTY

The Commission de-listed the **Old Masonic Building** based on the property's significant loss of integrity and its removal from the National Register. The Old Masonic Building was listed as a contributor to the Elk Grove Historic District, which was listed in the National Register of Historic Places in 1988. Properties listed in the National Register are automatically listed in the California Register. Subsequent to that listing the building burned in a 1993 fire that destroyed a substantial portion of the building, effectively removing those qualities that allowed the building to contribute to the historic significance of the district.

California Historical Landmarks

California Historic Landmarks (Landmarks) are sites, buildings, features, or events that are of statewide significance and have anthropological, cultural, military, political, architectural, economic, scientific or technical, religious, or experimental value.

The specific standards now in use were first applied in the designation of Landmark No. 770. To be listed as a Landmark a property must meet at least one of the registration criteria:

- The property is the first, last, only, or most significant historical property of its type in the region. The regions are Southern California, Central California, and Northern California.
- The property is associated with an individual or group having a profound influence on the history of California. The primary emphasis should be the place or places of achievement of an individual. Birthplace, death place, or places of interment are not considered unless something of historical importance is connected with the person's birth or death.
- The property is a prototype of, or an outstanding example of, a period, style, architectural movement, or construction, or it is one of the more notable works, or the best surviving work in a region of a pioneer architect, designer, or master builder. An architectural landmark must have excellent physical integrity, including integrity of location. An architectural landmark generally will be considered on its original site, particularly if its significance is basically derived from its design relationship to its site.

If a property has lost its historic appearance (integrity) it may be listed as a site. Landmarks No. 770 and above are automatically listed in the California Register.

The Landmarks program is the oldest of California's three registration programs. Charles F. Lummis and Joseph R. Knowland were influential writers and historians concerned with the preservation of California's early historical resources. In 1895 Lummis organized the Landmarks Club of Southern California to promote the preservation of the Spanish missions. Later in 1902 Knowland organized the California Historic Landmarks League in San Francisco. Its purpose was the preservation of Northern California's historic resources. These early activities reflected a public-private partnership between these organizations and the California Legislature.

The California Historical Landmark Program was created on August 14, 1931, and the first Landmark, Monterey Customs House in Monterey County was registered in June 1, 1932. Today California has 1,044 registered Landmarks. It is the responsibility of the Commission to review and approve Landmark nominations, and the text for the official State Landmark plaque.

The Commission took no action under the Landmarks program during 2008.

California Points of Historical Interest

California Points of Historical Interest (Points) are sites, buildings, features, or events that are of local (city or county) significance and have anthropological, cultural, military, political, architectural, economic, scientific or technical, religious, or experimental value.

The Point program is California's second oldest state registration program. It was started in 1965 by the Commission when the Commission was known as the California Historical Landmarks Advisory Committee. At that time many nominations were being reviewed that did not meet the criteria for Landmark designation. It was decided that an additional program was needed. Dr. Martin Ridge, of San Diego State College and a member of the Commission, contacted his local assembly person, James Mills and presented to him the situation which faced the Commission. On April 1, 1965, Assemblyman Mills introduced Assembly Bill No. 2166, which added the California Point of Historical Interest program to the responsibilities of the Commission.

The purpose of the new program was to generate interest in local history. Then all nominations had to be approved by the local County Board of Supervisors before the Commission could register the resource. In 1974 park bond program allowed local park districts to apply for money for restoration of historic resources if they were on one of the three registration programs that the Commission oversaw. As a result, the Point criteria were upgraded to include additional documentation, photographs, and letters of support from the local historical society.

Today the Point program registration criteria are the same that governs the Landmarks program, but are directed to a local context. The Point program allows for properties that have lost their integrity to be listed as a site.

In 2008 the Commission approved four Points of Historical Interest.

ALAMEDA COUNTY



Photograph 46. Olivina Gate and Winery Ruins, Alameda County, California

Olivina Gate and Winery Ruins includes the Olivina Gate, a walnut tree-lined Allee, the Julius Paul Smith homesite and the Olivina Winery ruins. Livermore with its favorable soils and climate became a healthy contributor to California's wine industry in the late nineteenth century when Julius Paul Smith purchased his land in 1881. During the 1886 and 1888 period the main winery building, brandy distillery and the buildings of the residential complex were constructed at Olivina Winery. Smith's operations continued to prosper and by 1893 Olivina Vineyard was the center of Livermore wine

growing industry. After Smith's death in 1904, his widow erected the gate in his honor. Olivina Gate and Winery Ruins was designated a Point of Historical Interest because it is the most significant grouping of remaining structures related to a pre-prohibition winery in the Livermore area. The gate itself is also the oldest and most significant of such gates in Livermore. Its design influenced later winery gates.

LAKE COUNTY

The **Tallman Hotel** was constructed in 1896 in the small town of Upper Lake at the north end of Clear Lake. Early Lake County settlers, Rufus and Mary Tallman, constructed the hotel as part of a hotel/saloon/livery stable complex. The Tallman Hotel is an example of western vernacular architecture, the dominant architectural style in California's 19th century mining towns. The It is the last remaining hotel building constructed in the community associated with Upper Lake's heyday period as a bustling commercial center and transportation hub for the County's thriving hot springs tourist industry, and is the most significant historical property of its type in the Upper Lake area.



Photograph 47. Tallman Hotel, Lakeport, Lake County, California

MADERA COUNTY

The **Charles Miller House**, initially constructed in 1886, was listed as a California Point of Historical Interest. It is the town of Raymond's first and oldest building, and is



associated with the town founder, Charles Miller. Charles Miller was the first stationmaster and railroad agent in Raymond, and its construction marked the beginning of the rapid growth of Raymond as a railroad and stage hub and as an important commerce center for the San Joaquin Valley. The Madera County Board of Supervisors recognized the Charles Miller House as a "place of historical importance" in the County of Madera.

Photograph 48. Charles Miller House, Madera County, California

SANTA BARBARA COUNTY

The Flores House (Casita) was designated a California Point of Historical Interest because it is the last, only, and most historically significant property associated with the early descendants of the Flores Family, a Santa-Barbara Mexican-American family important to the early history and culture of Santa Barbara. The house is the oldest and last remaining vestige of the ranch purchased by Leo and Barbara's grandfather Anastacio in 1869, portions of which, including the Casita, were owned by the Flores Family until approximately 1964.



Photograph 49. Flores Casita, Santa Barbara, Santa Barbara County, California

State Historical Resources Commission Committee Activities

The Commission continued the practice of employing an independent committee system designed to take the lead on specific preservation issues, and provide advice and guidance to the Commission. Each committee met as a working group and presented progress reports to the Commission as needed.

Under the Rules of Order adopted by the Commission on October 27, 2006, Commissioner Grenda as Chair of the Commission has the authority to appoint chairs to the each of the Commission's committees. In 2008, there were eight committees comprised of two commissioners and members of the public with expertise and interest in the particular area.

Archaeological Resources Committee – This committee was created in 2006 and is chaired by Commissioner Fernandez and Commissioner Grenda is a member. Its purpose is to increase awareness of archaeology and improve the quality of professional archaeological practice in California. To this end, the Archaeology Committee is building upon previous decades' work to meet the goals of the most recent California Statewide Historic Preservation Plan. That plan defines six distinct areas in which archaeological practices may improve: Curation, Conservation, Interpretation, Preservation, Standards and Guidelines, and Survey and Inventory. The committee met several times in 2008. The committee continued work initiated in 2007 regarding public outreach by soliciting comments to the white papers from Native American groups and Certified Local Governments.

California Cultural Diversity Committee – This committee is chaired by Commissioner Moss and Commissioner Shek serves as the member. The committee encouraged nominations of properties important to many diverse cultures. Commissioners Moss and Shek spoke with both individuals and groups or organizations interested in historic preservation. Commissioner Shek talked to the Chinese American Association in Sacramento on the process in nominating properties pertaining to the Chinese American community in Sacramento and advised interested people to work with OHP staff to identify potential properties.

Information Center Procedural Advisory Committee (ICPAC) – This is a long standing committee and was chaired by Commissioner Grenda. Eric Allison, California Historical Resources Information System (CHRIS) Coordinator, serves as the OHP staff liaison to the committee. The committee completed drafting the California Historical Resources Information System (CHRIS) Information Center Operation Manual, which the Commission voted to approve during the April 23, 2008 meeting. when it . proposed fee changes that the Commission adopted at the November 2009 meeting.

Modern Cultural Resources Committee – Commissioner Polanco chairs this committee which was created in 2006 when the Commission voted to abolish the Cultural Resources for Modern Age Committee and Cultural Landscapes Committee and merge the two committees into one. Commissioner Bertoli is a member of the

committee. The purpose of the committee is to encourage awareness, scholarship, and exchange of ideas on resources of the mid-century and to study thresholds for significance to facilitate registration, and to offer the same attention to California's cultural landscapes.

Public Policy and Legislation Committee – Commissioners Fernandez and Polanco served as co-chairs for this committee. Deputy State Historic Preservation Officer Stephen Mikesell served as staff liaison to the committee. The committee worked closely with staff counsel, Tara Lynch to propose language and a plan of action for proposed regulatory changes that govern the California Register.

State Historical Building Safety Board – Commissioner Bertoli chairs this committee. Timothy Brandt, AIA, Senior Restoration Architect and OHP's Architectural Review and Incentives Unit Supervisor, served as staff liaison to the committee.

Yearly Goals and Objectives Committee – Commissioner Brandes served as chair to the committee and Commissioner Phoenix served as the member. Working closely with Stephen Mikesell, the Deputy State Historic Preservation Officer, this committee recommended the new goals for the commission to achieve in 2009. Those goals are highlighted later in this report.

Program and Legislative Goals

In 2008, the Commission, on the advice of the staff of OHP, tied its goals to the Commission's committee system and directly to goals that were identified in the Comprehensive Statewide Historic Preservation Plan. In 2006, OHP, working closely with the State Historical Resources Commission, prepared and adopted a five-year Comprehensive Statewide Historic Preservation Plan, commonly called the State Plan. This plan was approved by the National Park Service (NPS) in early 2006.

The current committee structure of the Commission reflects the priorities of the Commission and address subject matters treated directly in the State Plan. Recognizing this overlap, an effective way to state the goals of the Commission was the adoption of goals from the State Plan that corresponded with the subject matter of the committees of the Commission.

In 2008 the Commission successfully worked towards five of its goals.

2008 Goals and Status

Archaeological Standards – The Commission is concerned about disparities in the quality of archaeological inventory and mitigation work, particularly when conducted in relation to California Environmental Quality Act compliance. The Commission intends to support any legislation or regulations that would work to establish better standards for such archaeological inventory and mitigation work.

Status: There was no legislation or regulations offered in 2008, but working through the Archaeological Committee, the Commission is gathering input from targeted professional associations and public and tribal groups that are committed to improving the quality of archeological inventory and mitigation work.

California Register – The Commission is interested in making regulatory changes to the California Register with the intent of making the application process simpler and more comprehensible.

Status: The Commission's Public Policy Committee worked closely with staff counsel to draft proposed regulatory changes. Staff developed a set of proposed regulatory language to clear up perceived procedural problems associated with the program. Those proposed changes are being discussed by the Commission at the November Workshop.

CHRIS Administration and Organization – The California Historical Resource Information System (CHRIS) is a cooperative relationship between OHP and various Information Centers (ICs) located throughout the state. OHP and the ICs of the CHRIS would like to refine existing policies and develop new policies to more accurately, completely, and appropriately define how the CHRIS is to be administered. This is a cooperative effort, with OHP and the ICs working together to clarify and formalize

administration of the CHRIS and the CHRIS inventory through agreement documents that define authority, responsibility, protocols for administrative actions, and other matters.

Status: Agreement document development is under way, through teleconference and face-to-face meetings. Target for completion is August 2009.

Digital Information – The Commission supports developing a fee structure for digital-based products and services at the Information Centers, to augment the existing “paper-based” fee structure. This effort was partially completed through a contract by the Northwest Information Center to analyze the California Historical Resources Information System (CHRIS) and develop a sustainable fee structure. The fee structure that was adopted is under evaluation.

Status: The Commission approved a new fee structure at the November 9, 2007 meeting. The new fees were implemented January 1, 2008. IC income from the new fees should be comparable to income from the non-electronic fees and generate adequate income for the ICs. It will be evaluated against these criteria and for customer satisfaction through December 31, 2009. It will be adjusted during the evaluation as deemed appropriate by the ICs and OHP, subject to approval by the SHRC.

Fee Legislation – Submit legislation to add section 5024.7 to the Public Resources Code to authorize charging of fees for access to, and review, retrieval, reproduction, interpretation, and analysis of the CHRIS inventory.

Status: Submitted to Parks Legislation Office in September 2008.

California Historical Building Code – Support efforts for legislative and regulatory changes to the California Historical Building Code.

Status: The 2007 revisions to the California Historical Building Code were approved by the California Building Standards Commission in June 2007 and are now part of California Administrative Code, Title 24, Part 8. The Commission and OHP will monitor implementation of these new standards.

2009 Program and Legislative Goals

At the November 7, 2008, Commission meeting the Commission discussed the goals for 2009. It was decided to continue using its committee structure as a means for identifying and achieving the Commission’s goals.

The Program Goals for the Commission are as follows:

Goal 1: Strengthen the tools and programs available for the identification, management, protection and interpretation of prehistoric and historical archaeological resources.

Goal 2: Acknowledge and evaluate culturally diverse historic properties while achieving greater outreach to diverse cultures and encourage greater numbers of culturally diverse students to enter careers in historic preservation.

Goal 3: Promote the identification and protection of California's significant cultural landscapes and landscape features.

Goal 4: Ensure that the identification of, and information about, historical and cultural resources in California is comprehensive, available in a consistent and complete format, and continually acquired.

Goal 5: Increase awareness, scholarship, and the exchange of information on and preservation of resources of the recent past.

Goal 6: Work to implement the California Main Street Program in the Office of Historic Preservation with permanent funding and staffing to provide for the needs of existing Main Street communities and new communities.

Goal 7: Support the Office of Historic Preservation and Governor Schwarzenegger's Executive Order #S-20-04 to provide the leadership role in working with affiliated and appropriate advocates to integrate green building principles, smart growth, and historic preservation practices into a single goal that will provide positive environmental, economic, and social benefits while protecting historical resources.

In addition to Program Goals the Commission intends to monitor or support programs and legislation in seven areas:

Main Street Program – The Main Street is an unfunded and non-staffed program at the Office of Historic Preservation that assists downtown businesses in historic city cores, commonly in smaller communities, but also in commercial community neighborhoods of large cities. The Commission intends to support any legislation that might be introduced to provide funding to allow the Office of Historic Preservation to provide technical support to Main Street communities. The Commission also supports OHP's efforts to work with the California Main Street Alliance (CAMSA) to provide interim management of the program, in cooperation with OHP, looking toward a potential permanent relationship between CAMSA and OHP in administering Main Street in California.

Archaeological Standards – The Commission continues to be concerned about disparities in the quality of archaeological identification, evaluation, and mitigation work, particularly when conducted in relation to CEQA compliance. The Commission intends to support any legislation or regulations that would work to establish better standards for such archaeological identification, evaluation, and mitigation work, including the

potential for licensing professional work. A series of white papers will be provided to the Commission in 2009 to consider for adoption, which will lay the foundation for the Commission to develop and guide appropriate policy changes statewide.

California Register – The Commission is interested in making regulatory changes to the California Register with the intent to clarify processes. The Commission will in 2009 consider sending regulatory changes through the Office of Administrative Law process.

Mills Act – The Mills Act has become increasingly popular with cities and counties throughout California. As property values go up, buyers and owners realize they can receive significant tax savings under the Mills Act. Approximately half the contracts in the state have been signed in the past five years; and three to five cities a year have added the Mills Act. However, the Mills Act has several significant flaws that require legislative changes to correct. The Commission intends to support the Office of Historic Preservation and the California Preservation Foundation's efforts to begin the groundwork for making changes to this important act.

Digital Information – Develop standards for digital information management in the CHRIS that are compatible with existing federal and state standards, and develop standards for information exchange between other agencies and entities and the CHRIS. These efforts are underway, with dialog both within the CHRIS and between the CHRIS (ICs and OHP) and other agencies and Native American tribes. OHP staff is also involved in related regional and national dialog and standards development efforts.

Fee Legislation – Submit legislation to add section 5024.7 to the Public Resources Code to authorize charging of fees for access to, and review, retrieval, reproduction, interpretation, and analysis of the CHRIS inventory.

California Historical Building Code – Support OHP's efforts to monitor the effectiveness of the 2007 changes to the California Historical Building Code.

Legislative Summary for 2008

During 2008 the Commission was briefed on several pieces of legislation that had the potential to impact historic preservation in California. Summarized below are those Assembly and Senate bills.

AB 1527 (Yee) State Property: surplus property - This bill would require the director, prior to January 1, 2009, to sell, for fair market value upon those terms and conditions determined by the director, specified parcels of state property, commonly referred to as the Cow Palace, located in the County of San Mateo and the City and County of San Francisco. The net proceeds of the conveyance would be paid into the Deficit Recovery Bond Retirement Sinking Fund Subaccount, which is a continuously appropriated subaccount in the Budget Stabilization Account, thereby making an appropriation. The bill would require reimbursement to the Department of General Services for any cost or expense incurred in the disposition of the property from the net proceeds of the disposition. The bill would declare that it would take effect immediately as an urgency statute.

AB 2171 (Cook) Purple Heart Memorial Summary: This bill would make the Department of General Services, in consultation with the Military Order of the Purple Heart, Capitol Chapter 385, responsible for the planning and construction of a memorial in the Capital Historic Region in honor of California residents who have been awarded the Purple Heart. The bill would establish the Purple Heart Memorial Review Committee, with a specified membership, including, but not limited to, a representative of the Office of Historic Preservation within the Department of Parks and Recreation. It would require that the planning, construction, and maintenance of the memorial be funded with private donations through a nonprofit foundation to be established. It also would prohibit construction of the memorial until the master plan of the State Capitol Park is approved and adopted by the Legislature's Joint Committee on Rules.

AB 2514 (Eng) Human Remains - This bill would establish new procedures and notification requirements, involving the OHP, which must be followed prior to the reinterment of specified non-Native American human remains discovered as a result of an excavation or construction project.

SB 1464 (Maldonado) - This bill renames the "Resources Agency" as the "Natural Resources Agency" (NRA) and requires Resources Agency supplies, forms, insignias, signs, and logos to be used until exhausted or unserviceable.

Resolutions Adopted in 2008

The Commission adopted ten resolutions in 2008.

Resolution No. 2008-01 commended the City of Pasadena for their commitment to the restoration of Pasadena City Hall and for their tremendous efforts to preserve such a historically and architecturally distinct part of the City's past.

Resolution No. 2008-02 recognized the many years of Pasadena Heritage's dedication to preservation advocacy.

Resolution No. 2008-03 commended Napa County Landmarks for their tremendous efforts to preserve and protect the historically and architecturally distinct part of Napa County's history.

Resolution No. 2008-04 recognized Bale Grist Mill State Historic Park for undertaking a major restoration project of the mill and making the bulk of the historic machinery usable.



Photograph 50. Paige Swartley and Cindy Heitzman of California Preservation Foundation accepting Resolution 2008-05

Resolution No. 2008-05 commended the California Preservation Foundation and the organization's commitment to preservation in California through numerous activities.

Resolution No. 2008-06 commended the Santa Barbara Trust for Historic Preservation for its dedication to preservation.

Resolution No. 2008-07 recognized the County of Santa Clara for becoming the most recent Certified Local government in California.

Resolution No. 2008-08 recognized the City of Santa Barbara Historic Landmarks Commission for its efforts to preserve Santa Barbara's cultural resources.

Resolution No. 2008-09 expressed gratitude to the University Art Museum of the University of Santa Barbara for housing and preserving the Architecture and Design Collection founded by Dr. David Gebhard and contains more than 750,000 original drawings, specifications, manuscript material, historic photographs, and architectural models representing more than 350 designers from 1890 to the present.

Resolution No. 2008-10 recognized the City of Sacramento for Becoming Preserve America City.



Photograph 51. Natalie Birk, Old Sacramento Historic District Manager accepts the resolution.