



# TRIBAL HISTORICAL RESOURCES INFORMATION SYSTEM (THRIS)

United Auburn Indian Community of the Auburn  
Rancheria – Tribal Preservation Department

- Jason Camp Tribal Historic Preservation Officer  
and Tribal Historic Preservation Committee Vice  
Chair
- Melodi McAdams, Cultural Resources Associate



# Introduction

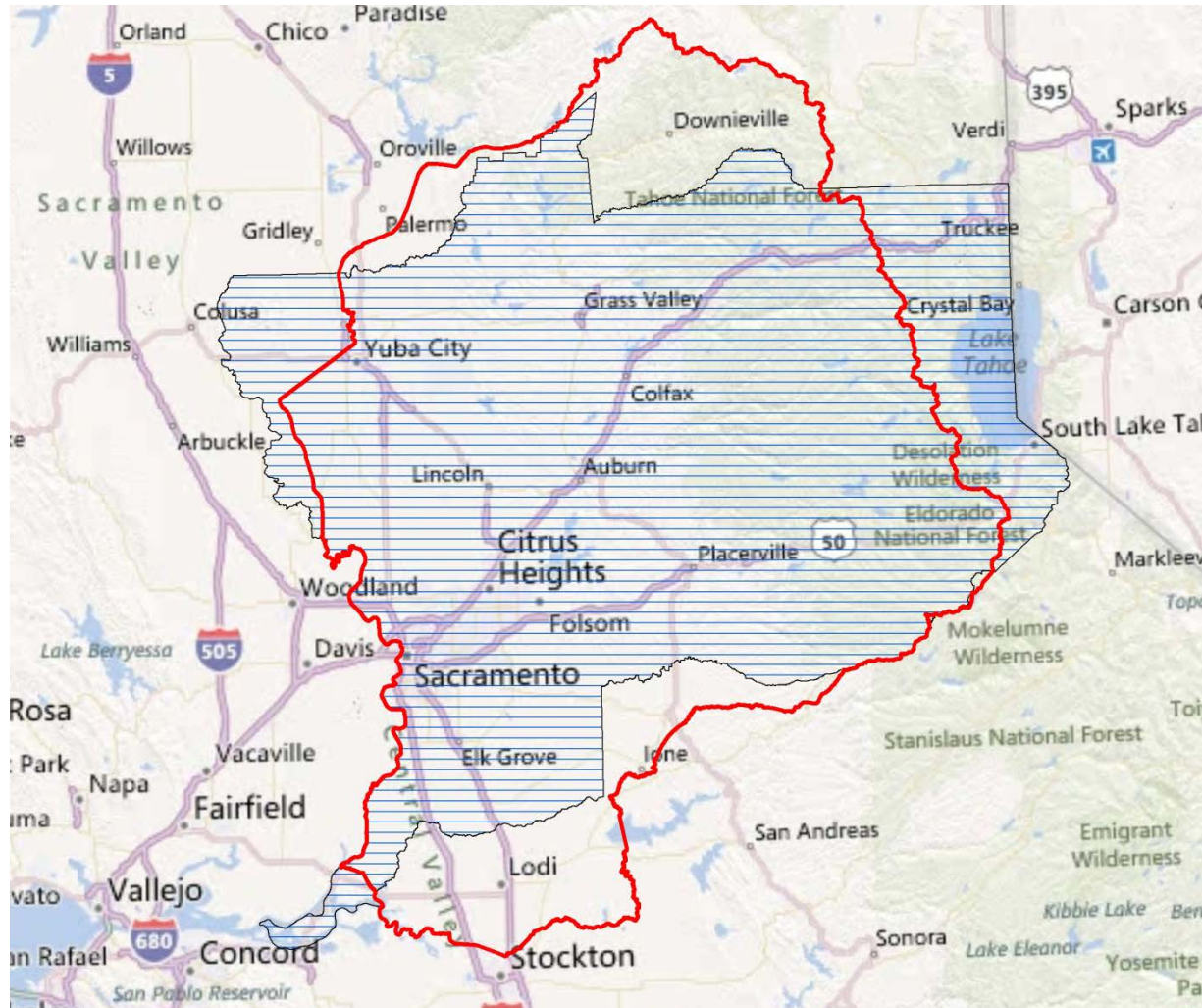
- ◎ United Auburn Indian Community of the Auburn Rancheria
  - Service Area
  - Tribal Historic Preservation Committee
  - Tribal Preservation Department



# Presentation

- ◎ **THRIS – Tribal Historical Resources Information System**
  - **Internal Role - THPO**
    - Consultation, Logistics
  - **External Role - Consultation**
    - Planning, Error Checking, Field Visits, Tribal Monitors
  - **Components**
    - CHRIS Data, Ethnographic, Historic, Field, Predictive

# THRIS – Service Area & CHRIS DATA



# THRIS – Internal Role – Project Review

- ◎ Receive a consultation letter
- ◎ Review the letter
  - Where is the project?
  - Does the letter show the project area (APE), is the project area reasonable, based on the project description?



# THRIS – Internal Role – Project Review

- ◎ Open your mapping software
  - Navigate to the project area
  - **Review cultural resources (archaeological, biological, historical, sacred, traditional, etc.) that are present**
    - This includes CHRIS data (but also many other kinds of data)



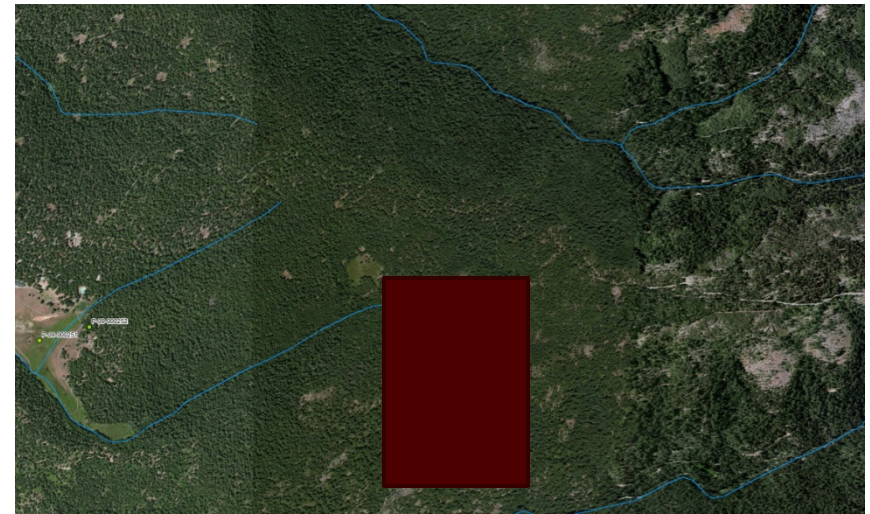
# THRIS – Internal Role – Map Checking

## Topographic maps

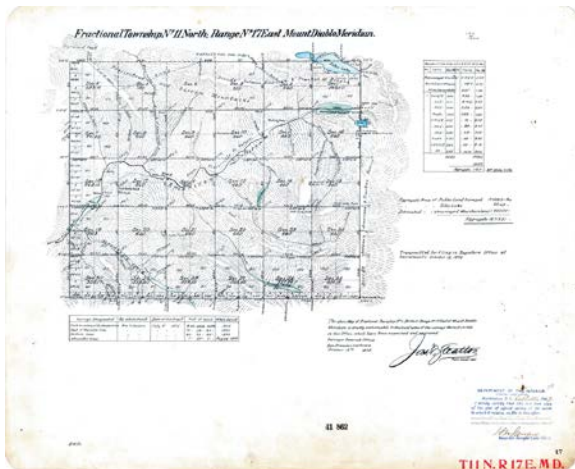


Confirm relationship to known resources

## Satellite Maps



Confirm terrain and biological resources.

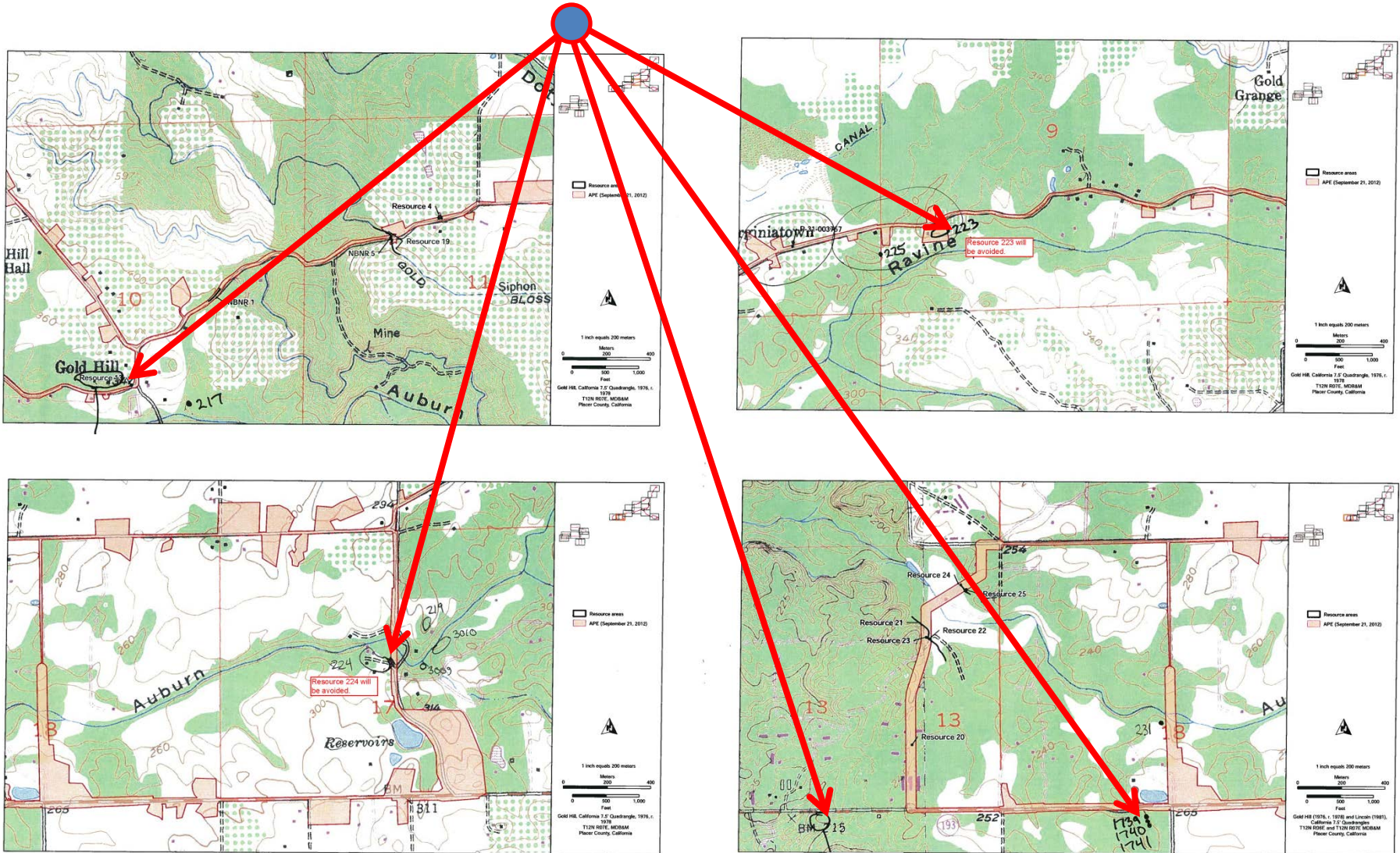


## Historic Maps

Confirm historic resources and terrain.



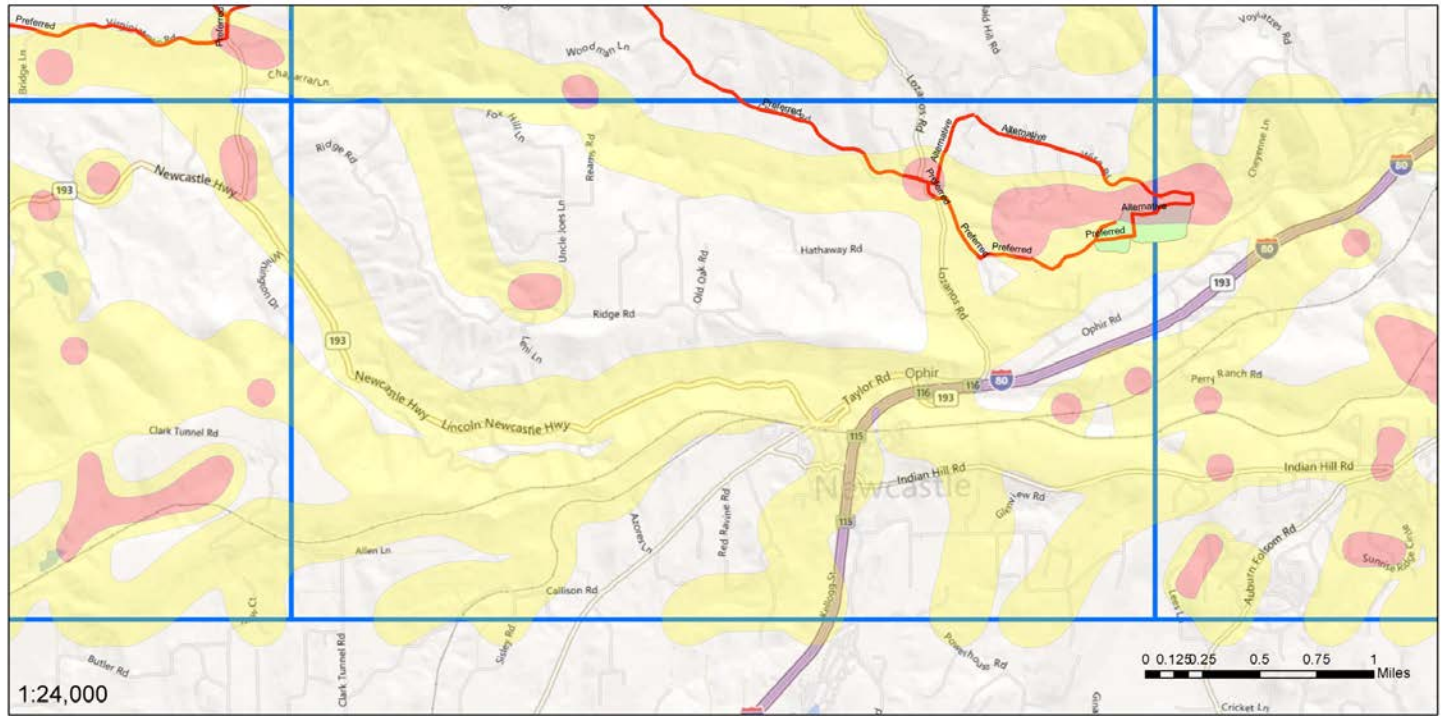
# THRIS – Error Checking



Confirm that the agency correctly identified known archaeological sites.

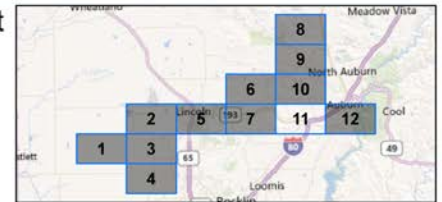


# THRIS – Consultation



Midwestern Placer Regional Sewer Project  
Page 11 of 12

- Legend**
- High Risk - Cultural Resources
  - Medium Risk - Cultural Resources
  - placer\_sewer\_update
  - potential\_effluent\_recycling
  - treatment\_plant\_locations
  - pressurized\_sewer\_pipeline\_final



Sensitivity maps let you identify areas of concern without providing exact locations or identifying what is present.

# THRIS – Internal Role – Project Response

- ◎ Based on the project and resources present:
  - **Ask for additional information?**
    - Reports, site records, clearer maps, etc.
  - **Request a site visit?**
  - **Request a consultation meeting?**
  - **Request tribal monitors?**
  - **Identify cultural resources that are affected**
  - **Recommend that other Tribes be contacted?**

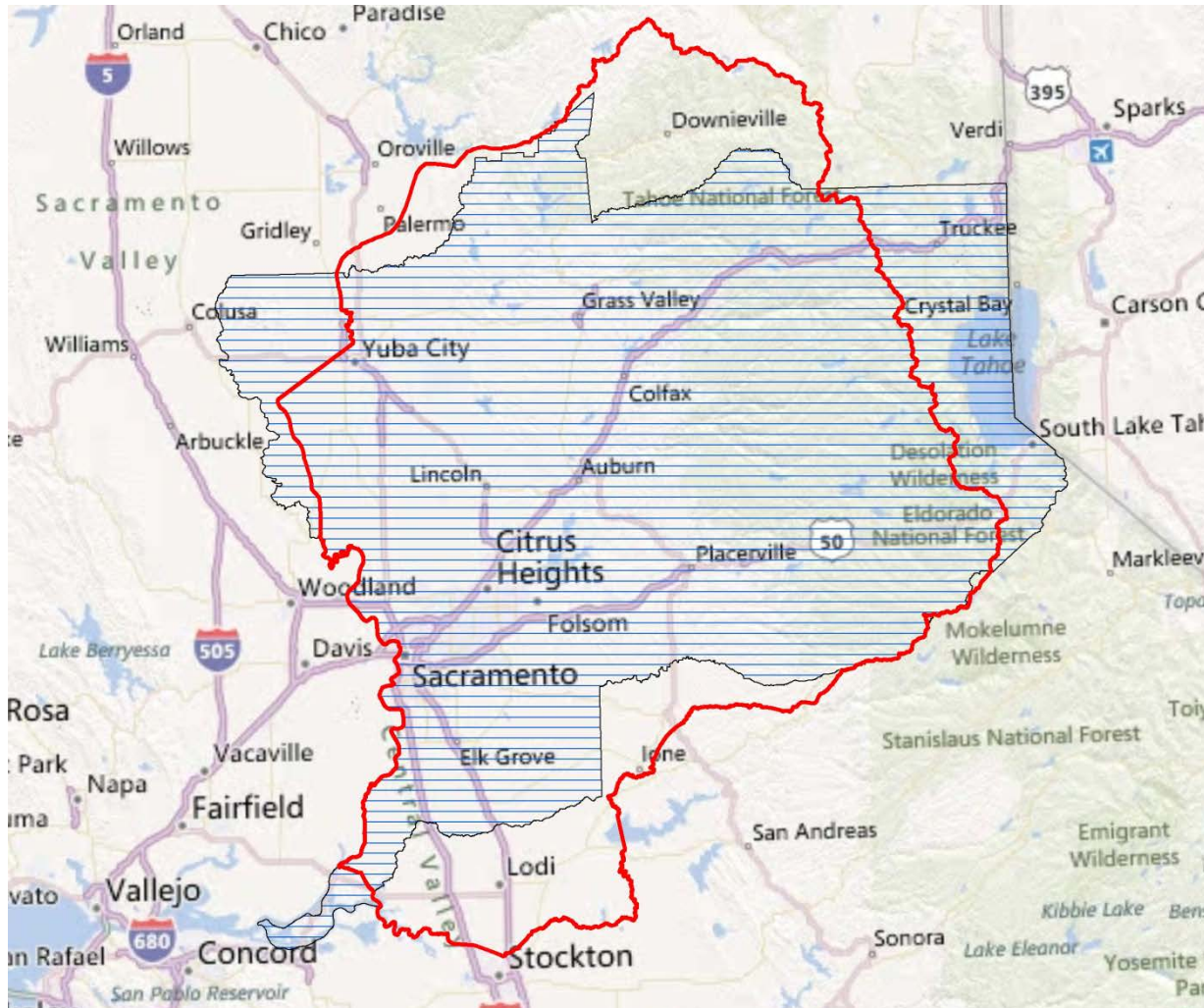


# THRIS – Components

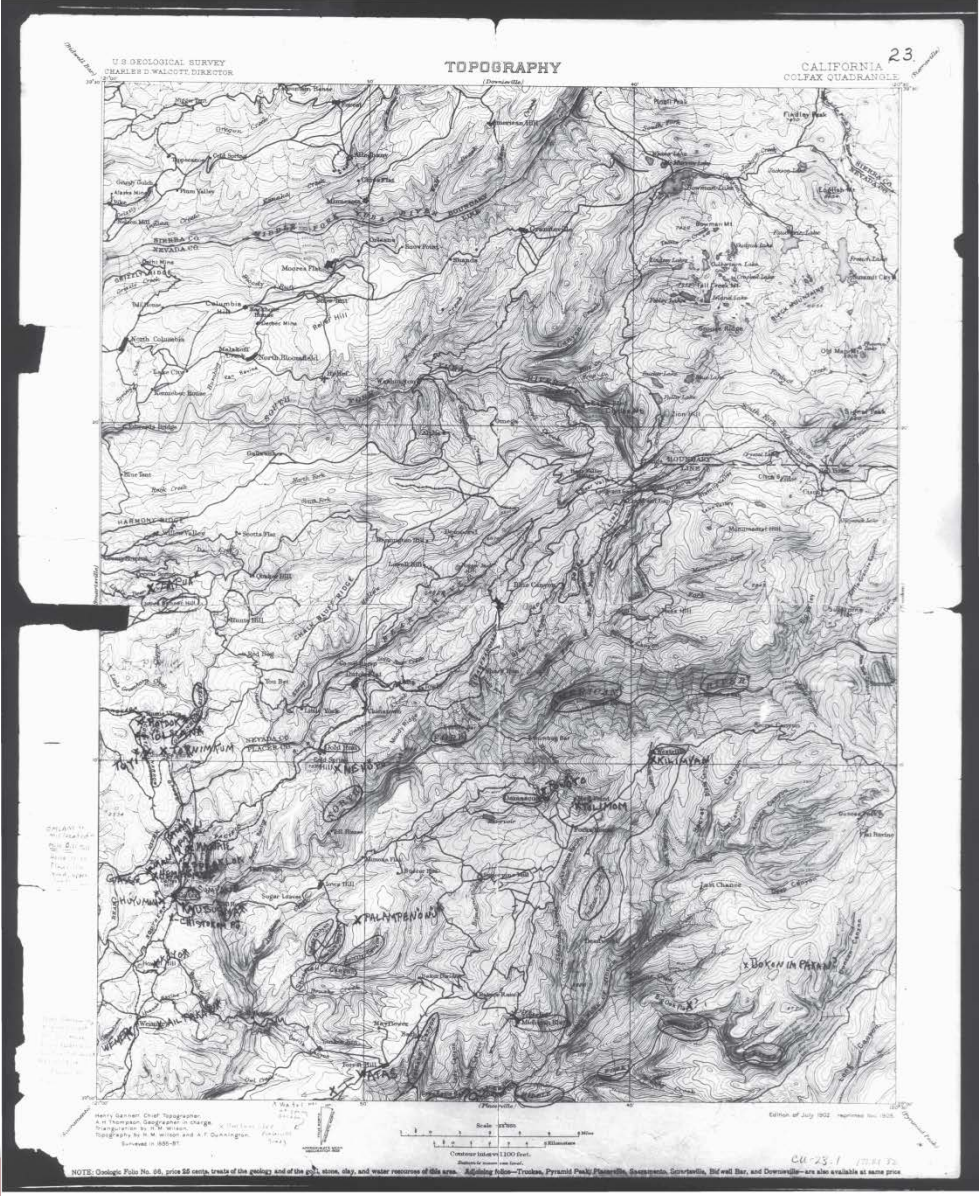
- CHRIS Data,
- Ethnographic Data
- Historic Maps
- Predictive Modeling
- Field Data Collection



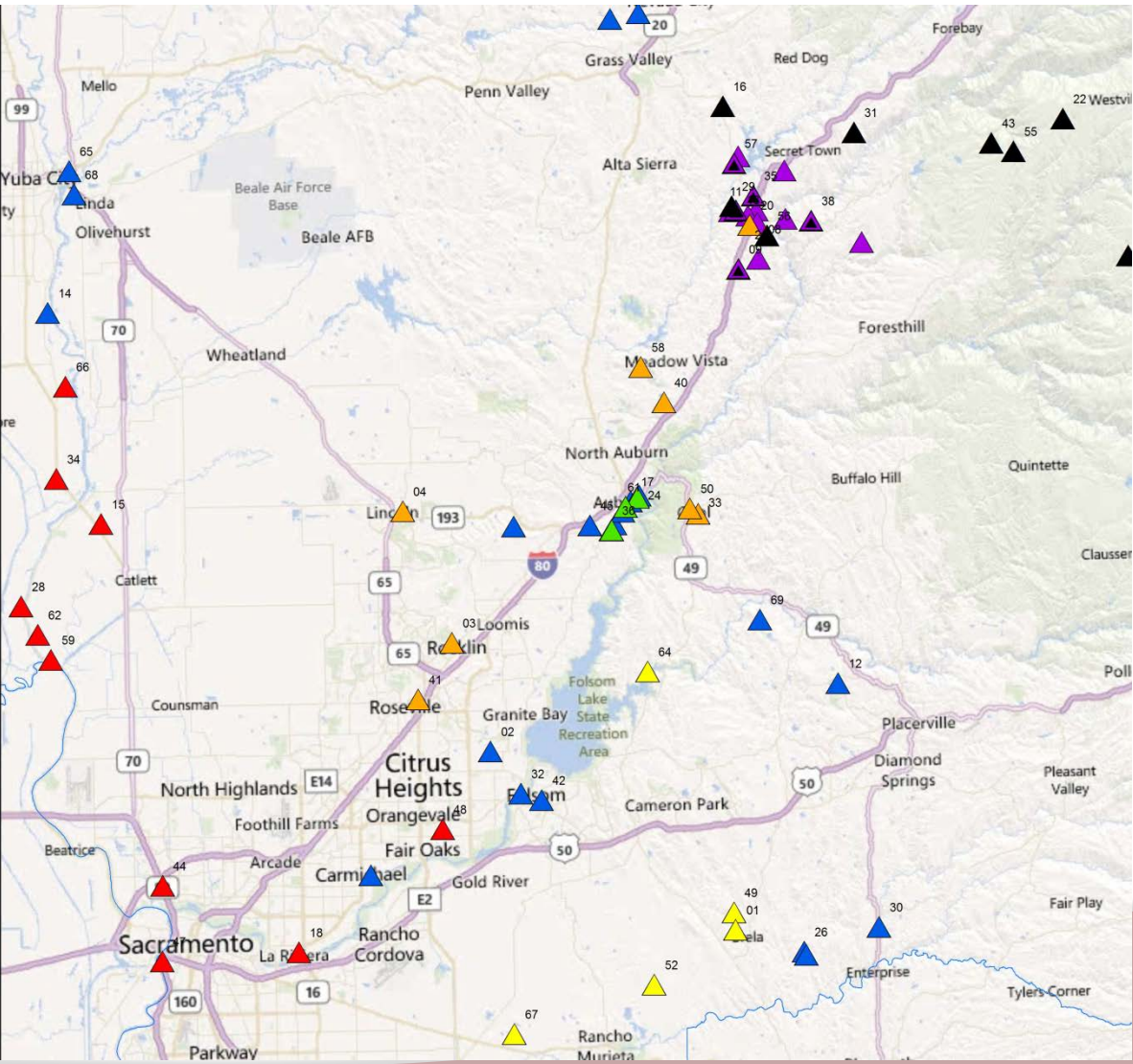
# THRIS - CHRIS DATA



# THRIS Components – Ethnographic Data



# THRIS Components – Ethnographic Data



# THRIS Components - Historic Maps & Data

## Fractional Township N° 11 North, Range N° 17 East Mount Diablo Meridian.



Members of Echo Lake in T11N R17E M17S 40-			
Sec.	Course	Dist. 1860	Course
Beginning of Meridian	S 83° E	5.00	
West E. Corner of Meridian	N 68° W	4.75	
along shore of Lake			
	N 82° E	3.50	
1	S 41° E	0.84	3.88 - 7.50
	S 47° E	3.50	N 74° E 6.50
	S 62° E	10.66	S 85° E 6.20
South	0.40	N 83° E	7.00
	S 53° E	4.00	- 70 - 8.00
	S 63° E	4.00	- 80 - 6.75
	S 52° E	3.50	- 4.8 - 5.00
South	0.30	- 28 -	8.50
	S 63° E	2.24	65 - 2.18
	S 6 -	3.25	74.74 - 8.00
			32.85
			32.85

Aggregate Area of Public Land Surveyed 11088.8 Acs  
 Echo Lake 90.40  
 Estimated - unsurveyed Mountain land 100000-  
 Aggregate 1871921 -

Transmitted for filing in Register's Office at Sacramento October 13, 1875.

Survey Designated	By whom Survd.	Date of Contract	Am't of Surv.	Wm's Survd.
South boundary of Township line	Wm H. Carter	July 9 <sup>th</sup> 1875	644 000 000	1875
West of Township lines	"	"	45 39 34	1875
Section lines	"	"	45 70 05	1875
Remainder lines	"	"	7 30 71	Aug 26 1875

The above Map of Fractional Township N° 11 North Range N° 17 East Mount Diablo Meridian is strictly conformable to the field notes of the surveys thereof on file in this Office, which have been examined and approved.  
 Survey General's Office  
 San Francisco California  
 October 13<sup>th</sup> 1875.

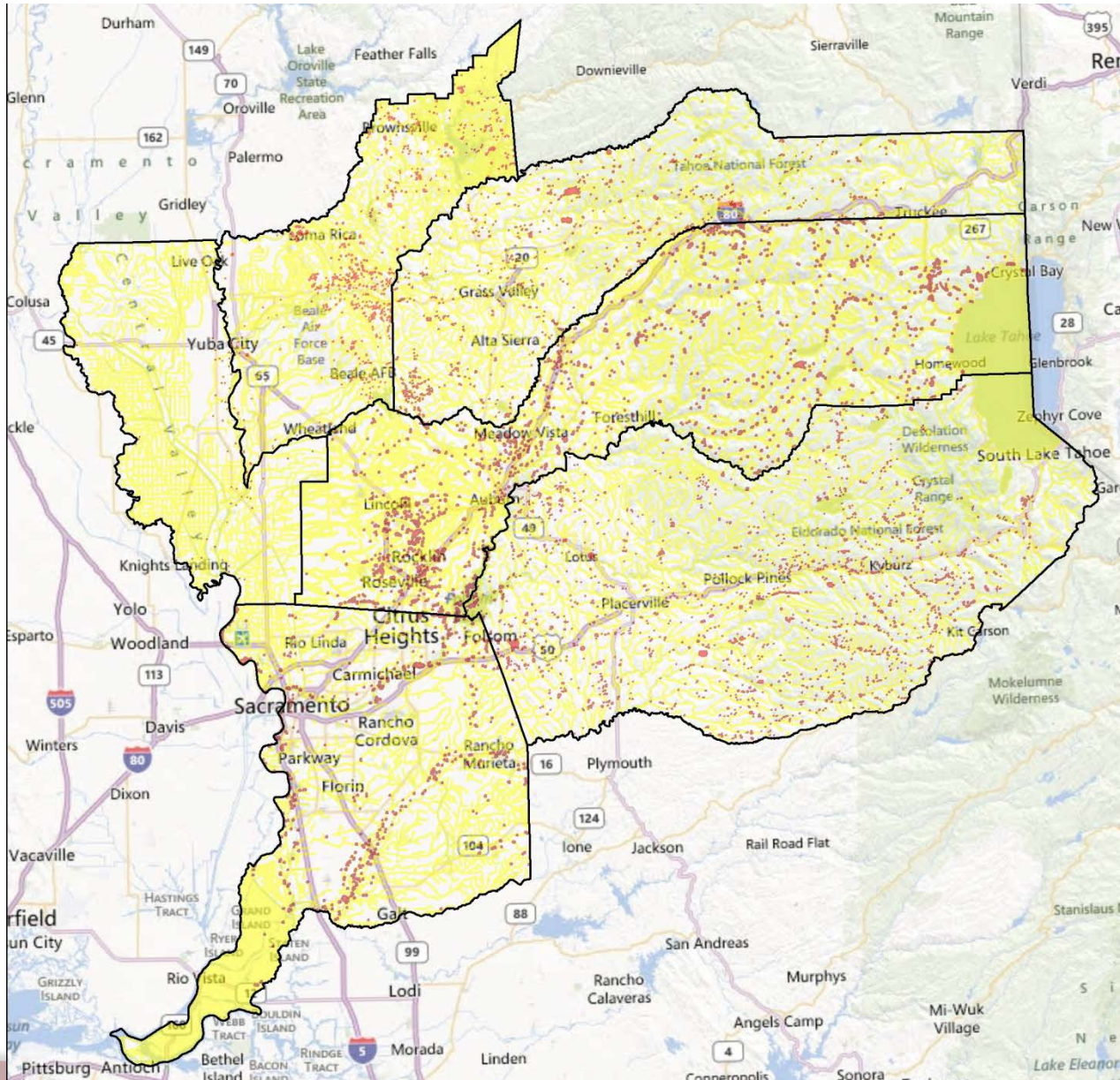
*J. A. Johnston*  
 Surv. Gen. Cal.

DEPARTMENT OF THE INTERIOR,  
 GEORGE LAND OFFICE,  
 Washington, D. C., August 25<sup>th</sup> 1907.  
 I hereby certify that this is a true copy of the plat of official survey of the lands to which it relates, on file in this office.

*H. A. Simpson*  
 Recorder, Geographical Land Office.



# THRIS - Predictive Modeling





# THRIS – Field Data





# Conclusion

- ◎ Tribal Historical Resources Information System
  - Components
  - Internal Role – THPO Logistics
  - External Role – Consultation
  - Application – integrating CHRIS data with other data
  - Relationships – be clear on what your relationship with your local information center is
    - Are you getting charged for something?
    - What are you getting charged for?