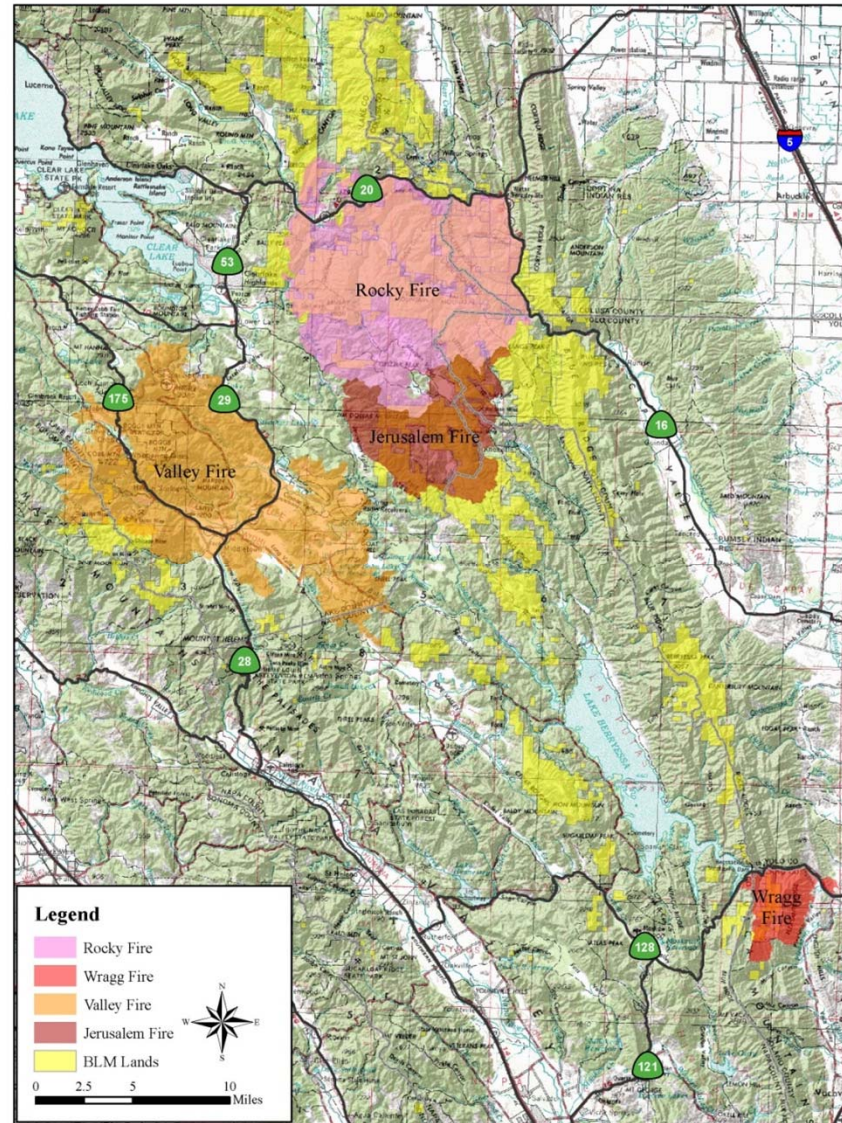


# **BLM Ukiah Field Office 2015 Fires**

Christopher Lloyd (M.A.)  
BLM Ukiah Field Office Archaeologist



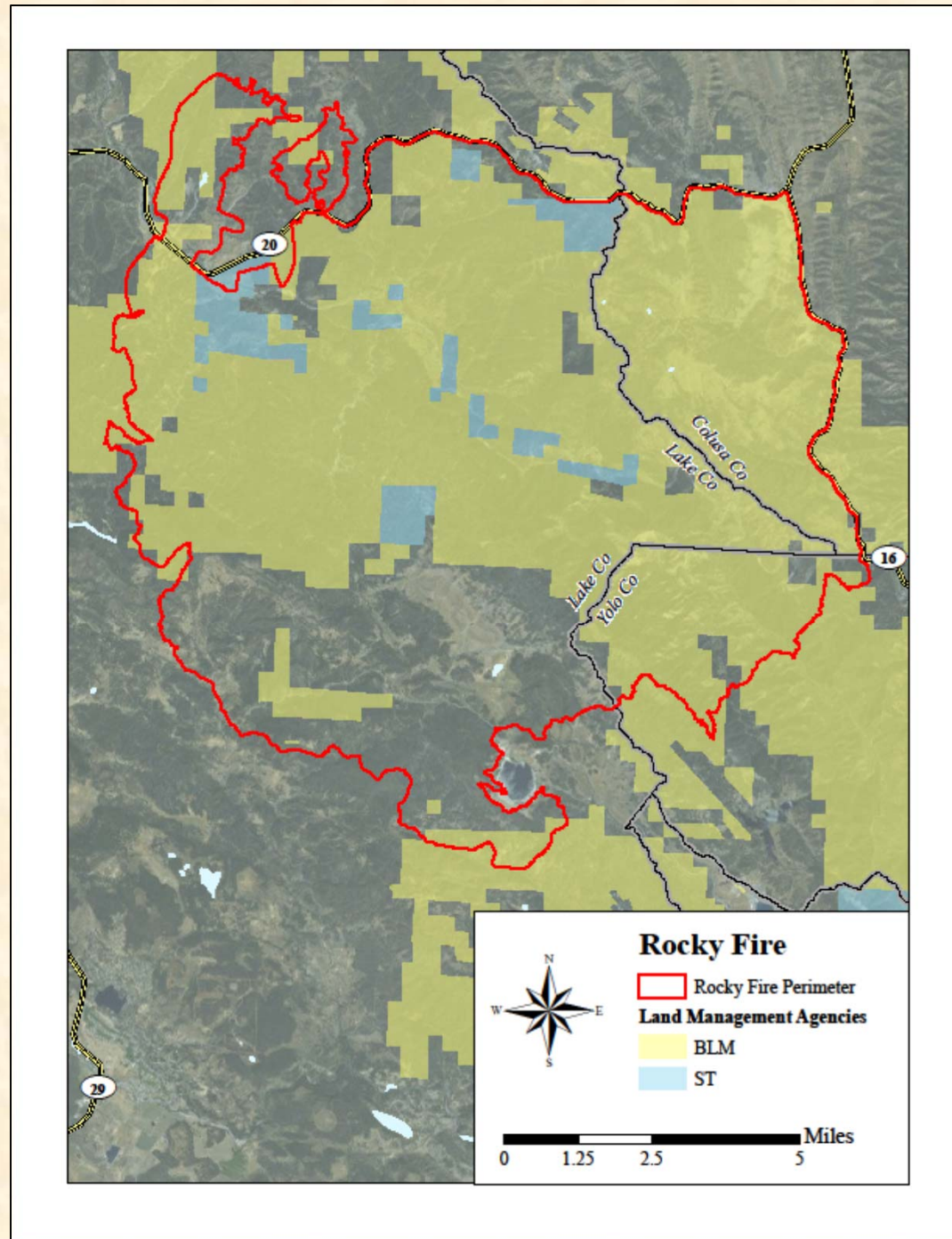
# BLM UKFO Fire Map 2015



Dates	Fire Name	BLM Acres Burned	Cause	Total Acres
July 22 – Aug 1	Wragg Fire	1,751	Vehicle	8,051
July 29– Aug 19	Rocky Fire	47,433	Water heater	69,438
Aug 9 – Aug 23	Jerusalem Fire	13,164	Under Investigation	25,156
Sept 12 – Sept 25	Valley Fire	1,888	Under Investigation	76,067
	<b>Total</b>	<b>64,236</b>		<b>178,712</b>



# Rocky Fire





*BLM, CalFire, Yocha Dehe incident base collaboration.*



*BLM, CalFire, Yocha Dehe In-the-field collaboration.*



**Archaeological and Historic Properties:  
General Fire-line Guidance for the BLM Ukiah Field Office.**

**Do not compromise safety for the protection and preservation of archaeological and historic properties.  
When possible and prudent:**

1. Be on the lookout for prehistoric and historic archaeological sites. These sites typically occur adjacent to streams and springs, confluences are often especially sensitive. However, sites can occur in other areas too. The most common indicators of prehistoric sites in this area (North Coast Ranges) are scatters of shiny black obsidian flakes from tool making activities and dark midden soils. Historic-era sites include homesteads that contain foundations, rock chimneys, and stone / brick-lined wells. Historic-era mining sites are possible as well.
2. Note, that much of the area has ever been surveyed for archaeological resources and many sites out there have yet to be discovered.
3. If you observe archaeological resources, flagged or unflagged, attempt to avoid with ground disturbing activities altogether.
4. If avoidance is not possible, minimize ground disturbance. Use a hand crew rather than a dozer to remove fuels from control lines that must cross site areas if possible.
5. Leave all artifacts in place as some may have been intentionally placed for religious or ceremonial reasons.
6. Note locations of discovered resources on a map, better yet, take site coordinates with a GPS. Leave information for the archaeologist so that the sites can be relocated and protected during Fire Suppression Repair. Flag the site in red if possible.
7. If you encounter a burial or other human remains, cease work in that area and contact the archaeologist immediately.

Your help preserving California's non-renewable cultural resources is appreciated.

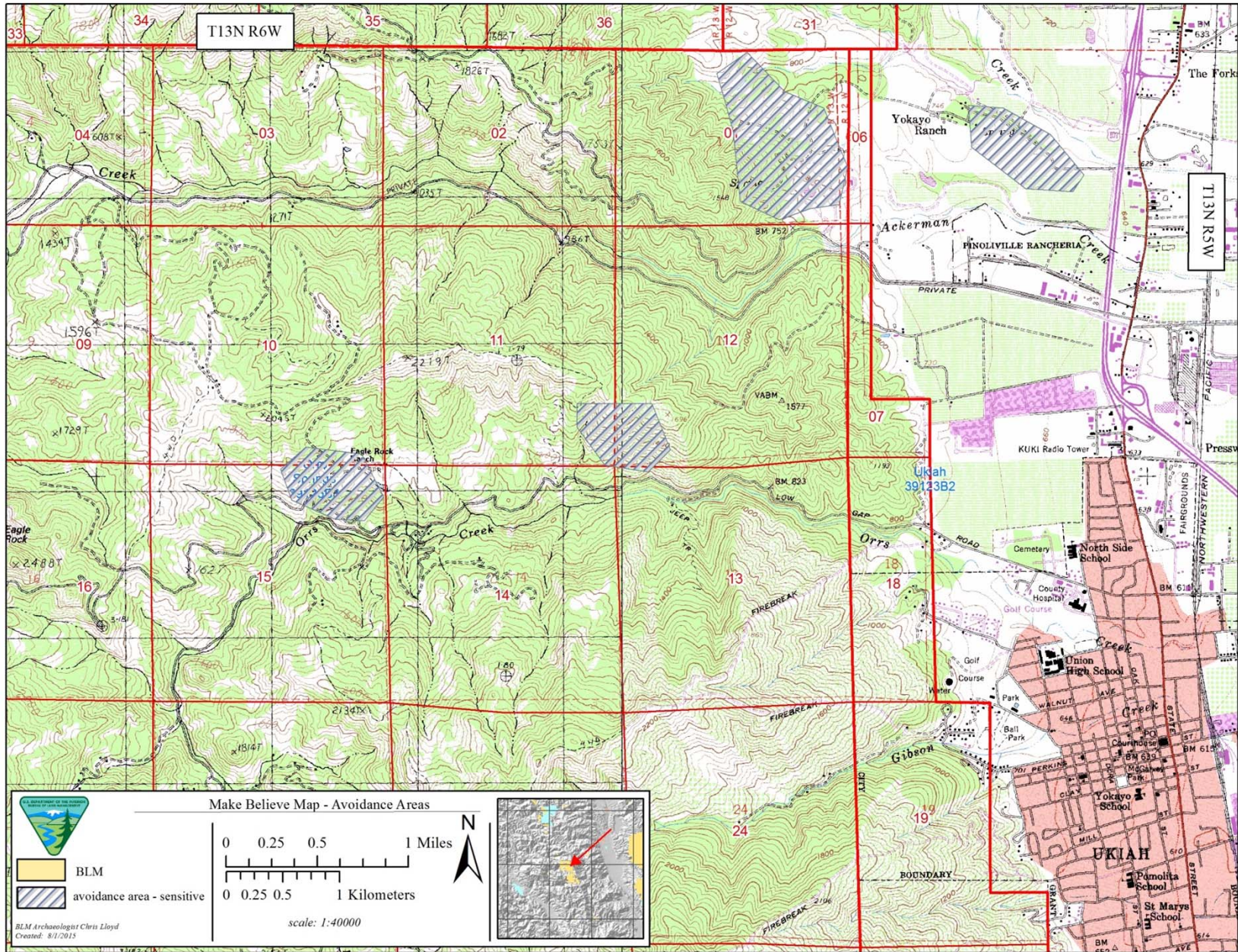
**Contact Information:**

Christopher Lloyd  
Ukiah Field Office Archaeologist  
Bureau of Land Management  
(707) 468-4075  
crlloyd@blm.gov

Chuck Whatford  
Associate State Archaeologist Northern Region  
CAL-Fire  
(707) 576-2966 (office)  
(707) 529-7989 (mobile)  
chuck.whatford@fire.ca.gov

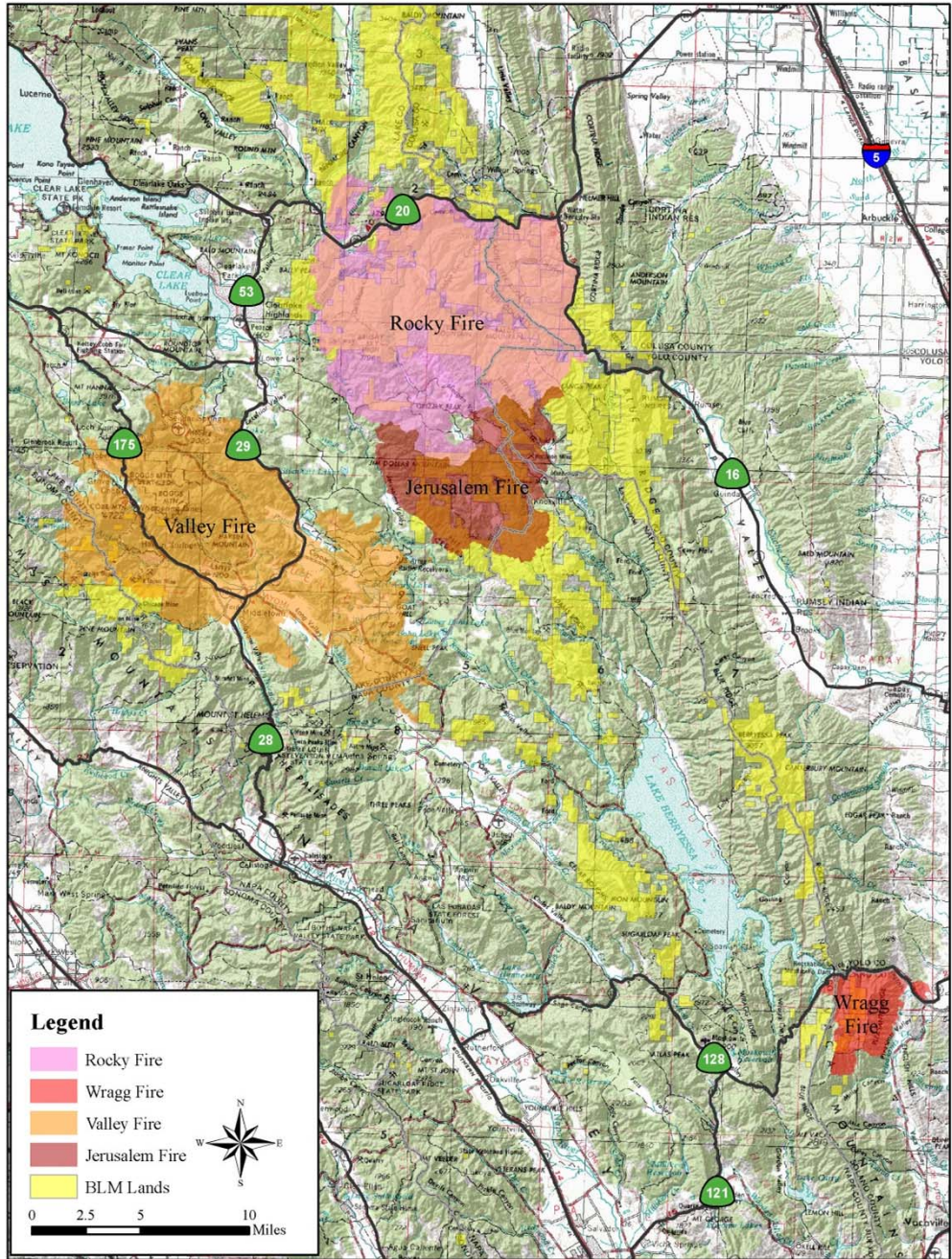
Richard Jenkins  
Senior State Archaeologist for CAL-Fire's Northern Region  
CAL-Fire  
(530) 224-4749 (office)  
(530) 949-8822 (mobile)  
rich.jenkins@fire.ca.gov



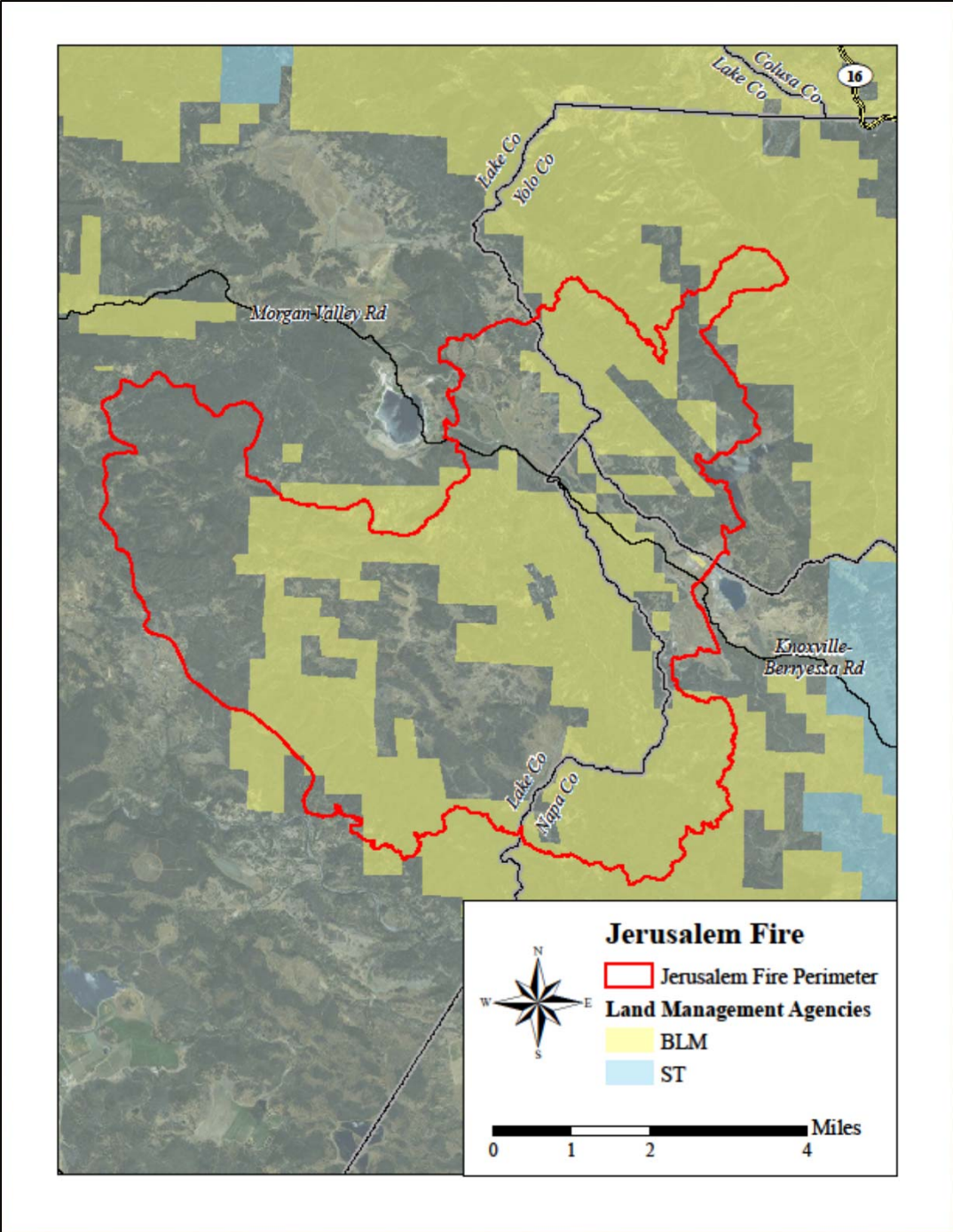


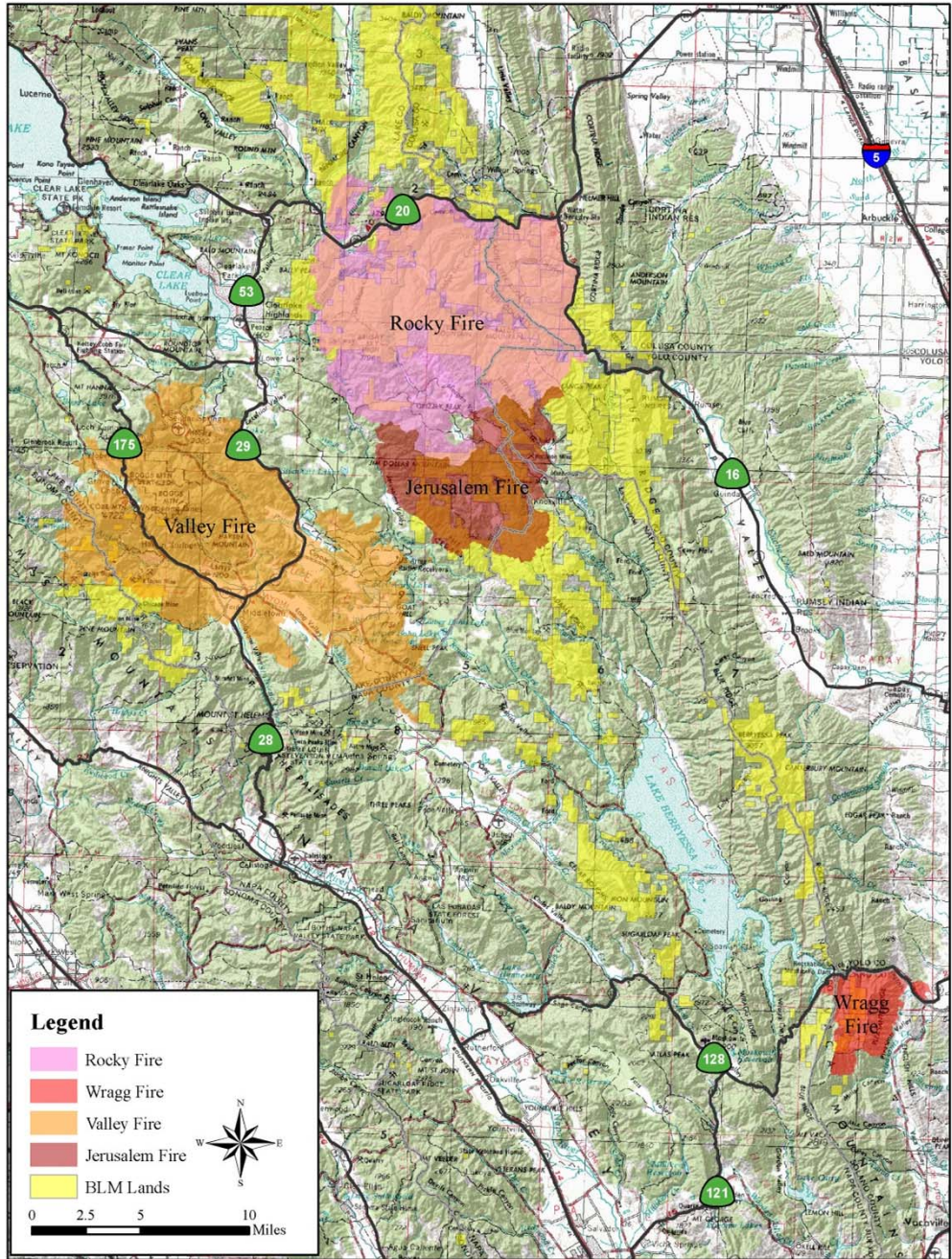







# Jerusalem





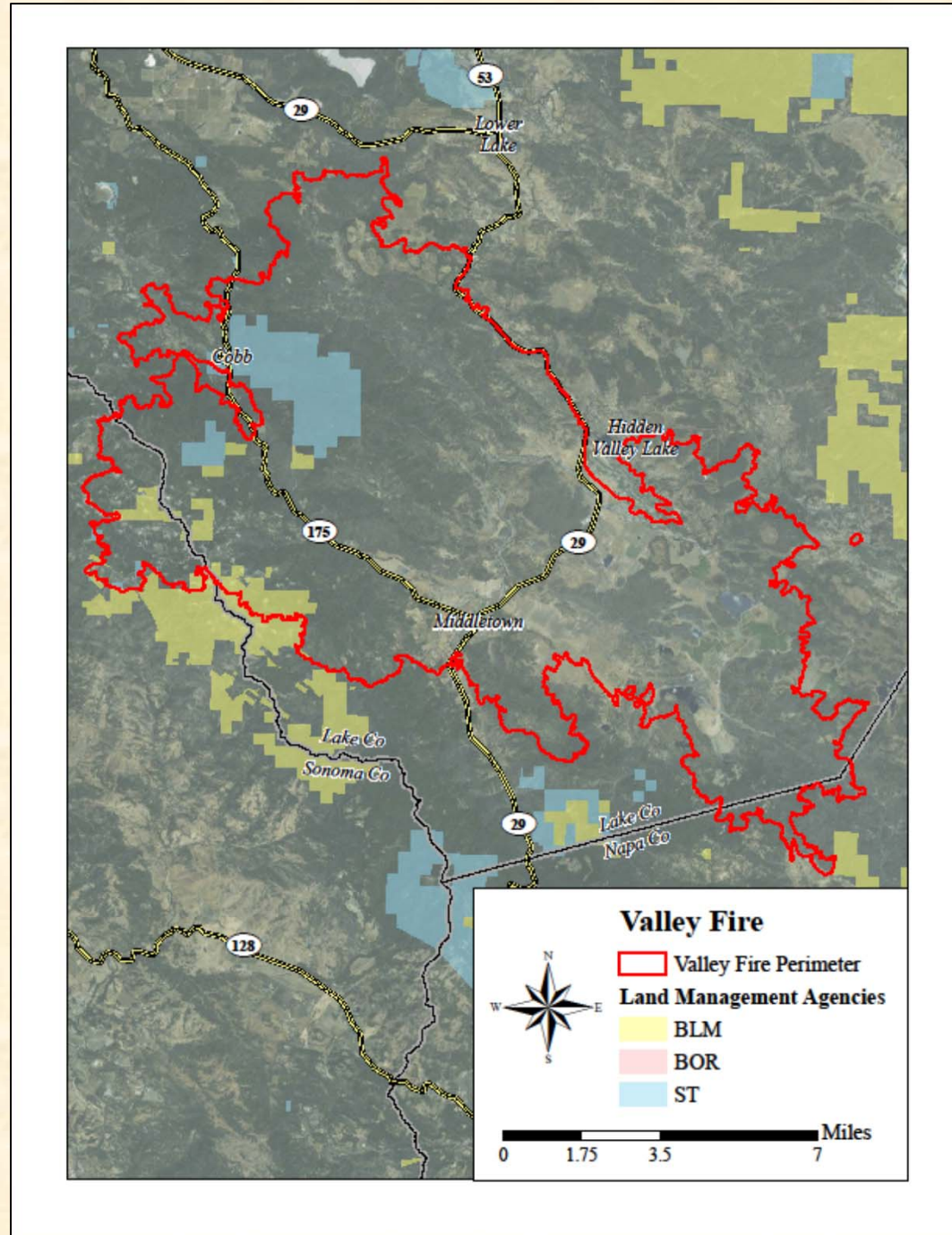
**Legend**

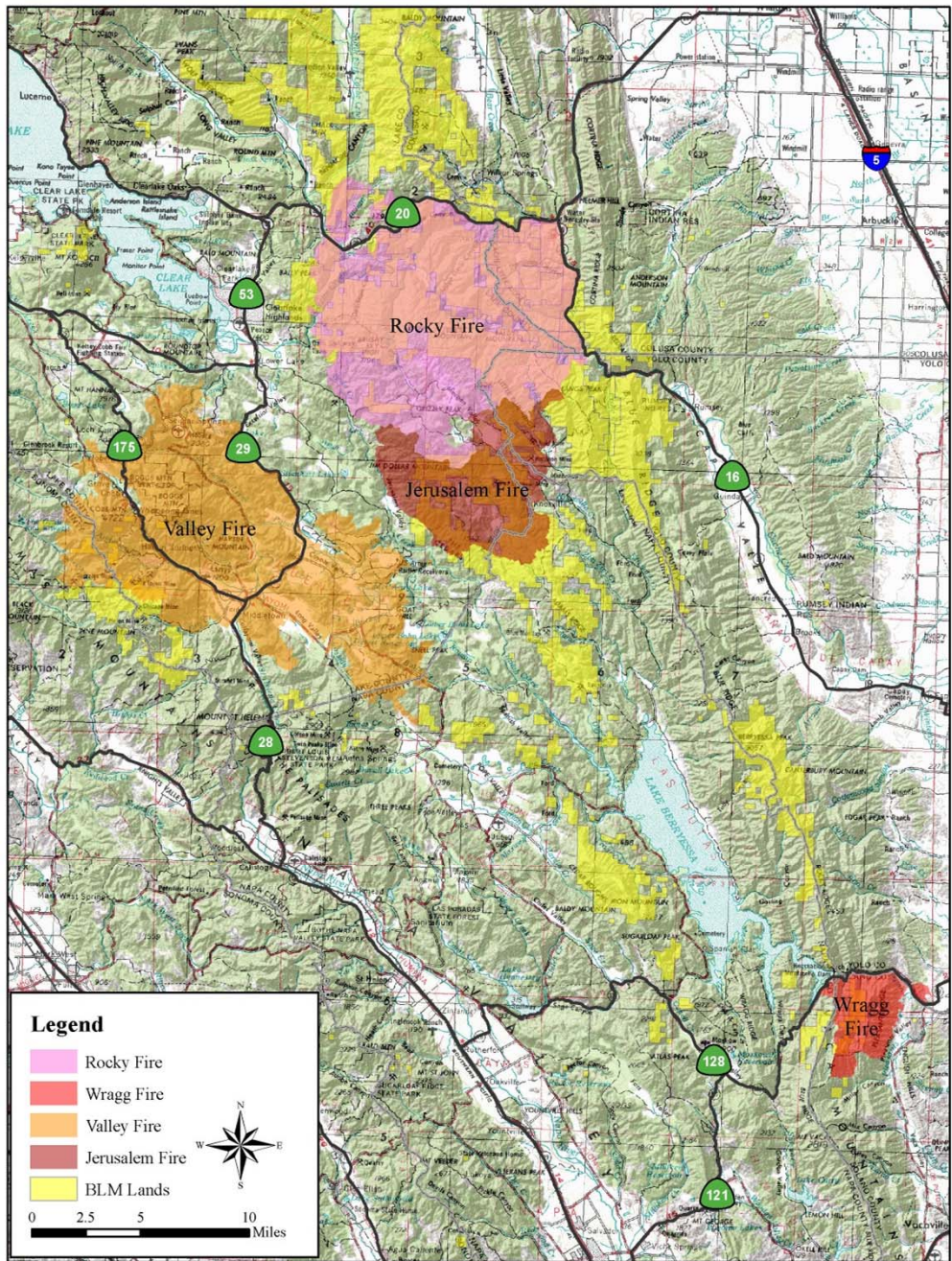
- Rocky Fire
- Wragg Fire
- Valley Fire
- Jerusalem Fire
- BLM Lands

  
 0 2.5 5 10 Miles




# Valley Fire

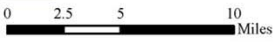




**Legend**

- Rocky Fire
- Wragg Fire
- Valley Fire
- Jerusalem Fire
- BLM Lands







# Lesson's Learned

- Everything is time critical
- Accessible / updated contact information
- Clear agreed upon tribal boundaries
- Pre-made maps of avoidance areas



# Maps

- Large
- Easy to read
- USGS topographic map
- PLSS (Township / Range)
- Standard map information
  - north arrow,
  - scale
  - legend
  - date
  - contact information



# Post-Burn Threats to Sites

- Looting
- Weathering
  - Landslides,
  - Rilling
  - Gullying
- Recreation





# Mitigating Natural Forces

- **Geotechnical fabric** (prevent erosion)
- **Wattles** (slow water down)
- **Vegetation** (cover sites & funnel people away from certain areas)
- **Signage** (keep individuals on trails)



# ES & BAR

## Post Fire Monitoring, & Stabilization

- ES & BAR funding to tribes via BIA - IPAC System
- Monitoring
  - BLM,
  - Tribes
  - Cameras
- Patrol (BLM Law Enforcement)
- Joint Agency / Tribal Cooperation
  - Lessen impacts to sites by looters.



# Northern California Indian Development Council (NCIDC)

- Non-profit organization to help put unemployed back to work and help stabilize / rehabilitate public lands.

## -Identified work

- Sign placement
- Trail maintenance
- Facilities / infrastructure repair
- Site stabilization / protection
- Vegetation planting





*Rocky Fire Overview from Highway 20 looking south.*



*Cache Creek – low intensity burn.*



*Example of a safety zone used to protect fire-fighters.*

• **Thank You**

