

# Transforming Underserved Communities



**Vibrant Parks Help Create  
Healthy & Meaningful Communities!**



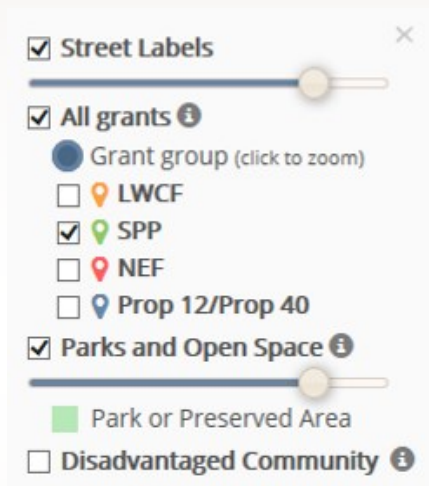
# \$368 Million Grant Program is Transforming Over 120 Underserved Communities

The \$368 million Statewide Park Development and Community Revitalization Program (SPP) is the country's largest park-related program.

- ◆ More than 100 new parks are being created and 20 existing parks are being renovated.
- ◆ A total of \$2.9 billion in funding requests were received.

## SPP Project Site Map

[www.parks.ca.gov/SCORP/Tools/GrantAllocations](http://www.parks.ca.gov/SCORP/Tools/GrantAllocations)



Grant Allocation Tool

Each blue circle represents a cluster of park projects in that area.

Click on a cluster for a closer view of each project

The vast majority of these new parks are either finished or on schedule for completion.

This report is available at [www.parks.ca.gov/grants](http://www.parks.ca.gov/grants).  
Use the online version of this report to click on the underlined text, images, and logos to link to articles and videos.

# Table of Contents

## **Before & After: From Vision to Reality**

### **A partial list of parks created through SPP**

Serenity Park	1
Salud Park	3
Mercado Park	4
Stanton Central Park	5
Inspiration Park	7
York Avenue Park	9
Boeddeker Park	10
Pogo Park at Elm Playlot	11
Familias Corazones Verdes Park	13
Rumrill Park	14
Lynwood Linear Lara Park	15
Noyo Headlands Park	17
Artivio Guerrero Park	19
<b>Tools for Future Park Planning</b>	<b>20</b>
<b>The Art of Community Based Planning</b>	<b>21</b>
<b>Empowering Residents to Create Healthier Communities</b>	<b>22</b>



Photo by Brian Bear (Pogo Park Elm Playlot)

**Parks are unique places where children play, families bond, seniors socialize, youth are mentored, people exercise, cultures celebrate, and everyone connects with nature.**

# Serenity Park

**Before** the \$5 million SPP grant to the Trust for Public Land



Image above is also a video created by [community.kp.org](http://community.kp.org)

*“For 40 years my mother, then I, tried to have this lot full of weeds cared for. It was rodent infested and developers dumped here late at night. Everybody is excited waiting for the grand opening. We all fought for this. It brings me a lot of joy seeing the community look out for this park at all times of night while it’s being built.”*

**Ronald “Kartoon” Antwine** Watts Resident

## After



Photos by EPT Design unless otherwise noted



Photo by Gary McCarthy for [LA Wave](http://LA Wave) (2015)



# Serenity Park

Watts is a high-density neighborhood in South Los Angeles.

"A packed house for park's debut in Watts"  
by the Trust for Public Land (2015)



Serenity Park's design by EPTDESIGN



Photo by Gary McCarthy for LA Wave (2015)



"Transforming Lots" by Gary McCarthy, Shawnte Passmore and Kevin Tsukii

# Salud Park

Before the \$4.58 million SPP grant to City of Paramount



Photo by OGALS

## After

“To Your Health” Salud Park is a Free Outdoor Gym for Residents  
Paramount Pulse Beat (2013)



Photo by Brian Baer



*“I made it a goal to walk two miles each day on this park’s track with a group of retired friends. Then I use the outdoor gym equipment. I lost many pounds. It is a positive movement to a healthy lifestyle.”*

**Gale Swain** Paramount resident

“Paramount Collaborates to Create A Unique Outdoor Fitness Facility”  
California City Solutions (2016)

# Mercado Park

Before the \$3.49 million SPP grant to City of Perris



Photo by OGALS

## After



Fabric Architecture includes information about the design of Mercado Park.



The California Park & Recreation Society (CPRS) Awards video.

"City Receives Award for Mercado Park"  
City of Perris (2015)

"Mercado Park, Perris Ca." by InPerris.com



# Stanton Central Park

Before the \$2.96 million SPP grant to the City of Stanton



Photo by Haire (2015)

## After

“Stanton to begin building its own Central Park” Orange County Register - Haire (2015)

“Stanton unwraps its crown jewel - a sprawling park”  
Orange County Register - Agro (2016)



Courtesy photo for the  
Orange County Breeze (2016)

“Stanton provides  
refuge for monarch  
butterflies” Orange County  
Breeze (2016)



# Stanton Central Park



*"Your first impression is, 'Wow, this is impressive!'"*

Tom Adams Stanton resident



Photos by Nick Agro unless otherwise noted

# Inspiration Park

Before \$5 million SPP grant to City of Fresno



Photo by OGALS

## During



Photo by OGALS

“Inspiration Park Nearing Completion in Northwest Fresno”  
ABC 30 (KFSN-TV Fresno)

**Inspiration Park for people of all ages and abilities.**



Photo by Brian Baer

*“I am really happy this is going up. As a community, we need to think generationally. A whole generation won’t have to hear they can’t go to a park because it is not accessible, that it will hurt our body.*

*Now we can socialize with kids like us. That is priceless.”*

**Danielle Ortiz** Fresno Resident

# Inspiration Park

After



Photo from [Inspiration Park Homepage](#)



Photo by Flores - Fresno Bee (2015)



Photo by [ablebodyadvocates.com](#)

“A Day in the Park”  
Friends of Inspiration Park (2015) 



Photos by Flores - Fresno Bee (2015)

# York Avenue Park

Before the \$2.87 million SPP grant to City of Los Angeles



Photo by OGALS

After



Photos by LaTania Kirkland for [Red Tricycle](#) (2015)

"Here's How Highland Park Turned a Gas Station Into a Park"- Barragan (2015)

"Highland Park welcomes a new park to the neighborhood" Eastsider LA - Dibs (2015)



Outdoor xylophone and drums! Photo by LaTania Kirkland



Instagram Photo by thepophop

# Boeddeker Park

Before the \$4 million SPP grant to City of San Francisco



Photo by Peter Moore for [San Francisco Recreation and Parks—Boeddeker Park News](#) (2013)

## After

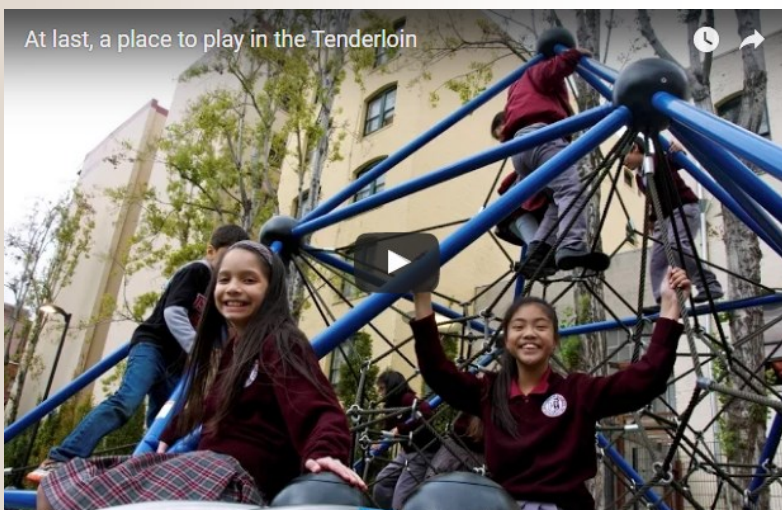


Photo by Jeremy Beeton

The California Park & Recreation Society (CPRS) Awards video.



“CPRS Awards of Excellence For Two Recent Park Projects”  
San Francisco Recreation & Parks Boeddeker News - Curiel (2016)



“Tenderloin residents enjoying reborn Boeddeker Park”  
John King (2015)

Image is also a video for “Boeddeker Park” by TPL



# Pogo Park at Elm Playlot

Before the \$1.8 million SPP grant to City of Richmond

*“The first Pogo Park, Elm Playlot, is a half-acre “pocket park” in the center of the Iron Triangle. Eight years ago it was a neglected, toxic eyesore.*

*Now it’s a magical kid magnet and a visible emblem of community transformation.”*

**Toody Maher**, Executive Director, Pogo Park



Several articles have been written about this corner lot’s transformation and revitalization of this neighborhood, including: “Together in the Park: How One Woman’s Vision reinvigorated A Neighborhood” by Radio Free Richmond (2015)



“Introduction to Pogo Park in Richmond” Pogo Park (2016)



“Richmond Pulse Story on Elm Playlot” by Pogo Park



**Residents build Elm Playlot**

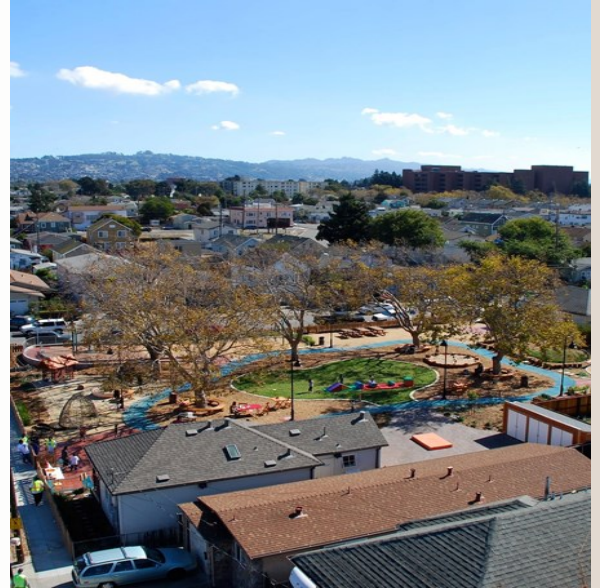


All photos by Pogo Park

# Pogo Park at Elm Playlot

## After

“Healthy Neighborhoods for Children to Grow and Thrive”  
Pogo Park (2016)



*Pogo Park — “We drilled capital monies down, into the community, to hire and train local residents to design and build the park themselves.*

*Our motto is to lift up the people at the same time you lift up the place. And it worked.*

*This public project was a magnet that brought out all the goodness and talents of the neighborhood that are so often hidden.” Toody Maher, Executive Director, Pogo Park*



# Familias Corazones Verdes Park

Before the \$3.52 million SPP grant to Latino Health Access



Photo by OGALS

## After



Photo by Brian Baer  
Left to Right: Rosalia Vargas, Irma Rivera, and Reyna Artero



“Latina mom helps get city’s first park in 25 years” - Salud Today (2014)



Photo by Latino Health Access



Photo by Vanessa Sandoval for Voice of OC (2015)

*“My grandkids love this park, they practically beg for me to bring them here everyday.”*

**Graciela Medina**  
Santa Ana resident



# Rumrill Park

Before the \$3 million SPP grant to City of San Pablo



Photo by OGALS

*"It is so surreal to stand here knowing this will become a soccer park. It will build kindness in our community. Here, youth will learn pride-with-purpose and become fit. We have seen kids turn their lives around through sports."*

**Rafael Torres**, Soccer Coach in San Pablo

## During



Photo by Brian Baer

## After



Photo by NCCLF: Rumrill Sports Park Grand Opening!

"Rumrill Sports Park Grand Opening!" - Northern California Community Loan Fund (2015)

# Lynwood Linear Lara Park

Before the \$4.9 million SPP grant to City of Lynwood



Photo by OGALS

## After



Photos by SWA Group unless otherwise noted

# Lynwood Linear Lara Park



5.25 acres of vacant lots along an I-105 freeway embankment transformed into a mile-long park.

*"In creating this beautiful new park, we're bringing life into this vast piece of land that's been sitting here empty all of these years."*

**Sarah Magana-Withers** City Manager



# Noyo Headlands Park

Before the \$4.84 million SPP grant to City of Fort Bragg



Photo by OGALS

## After

For over 100 years, miles of Fort Bragg's coast was restricted and fenced off from the general public.

This former industrial site is now a 82 acre park with 4.5 miles of coastal trail in the heart of the City.



Photos by the City of Fort Bragg Community Development - Coastal Trail Homepage unless otherwise noted

# Noyo Headlands Park

[Coastal Trail](#) article by the City of Fort Bragg includes the entire process and park amenities and pictures.



Photo by [California Coastal Conservancy: The Conservancy at 40 Years Fort Bragg](#)

“[Noyo Headlands Park Fort Bragg Coastal Trail](#)” from the Mendocino County Northern California



The California Park & Recreation Society (CPRS) Awards video.

Walk or ride the accessible trails!



Beautiful restrooms!



Take the stairs down to the beach!



Rest on a bench and enjoy the view!



# Artivio Guerrero Park

Before the \$2.84 million SPP grant to City of Sacramento



Photo by OGALS

## After



Photos by City of Sacramento Parks and Recreation

“Finally, a park blooms in  
Fruitridge Manor”  
Sacramento Voices -  
Gutierrez (2014)



Photo by Francisco Gutierrez of Sacramento Voices

# Tools for Future Park Planning

The Office of Grants and Local Services (OGALS) offers the nation's first interactive geographic information system (GIS) mapping technology that identifies park deficient neighborhoods throughout the entire state.

The screenshot shows a website interface with a top navigation bar containing: SCORP, TOOLS (highlighted), STORIES, PARTNERS, ACTION, and ABOUT. Below this is a sub-navigation bar with: Park Access, Community FactFinder, Grant Allocations, and Methods. The main content area starts with a paragraph: "Parks for All Californians offers three tools to assist local park agencies and other interested organizations and individuals to assess park needs." Below this are three green boxes, each representing a tool: 1. PARK ACCESS: "Explore the data used in the SCORP report". 2. COMMUNITY FACTFINDER: "Learn more about the demographics of any California neighborhood". 3. GRANT ALLOCATIONS: "Find out where OGALS' projects are located". Below these is a section titled "With each of these tools we:" followed by three circles containing the words "provide", "inform", and "analyze" in sequence. Below the circles is the text: "All of the tools offer: data downloads, interactive maps and data analysis, summary statistics, methods and data sources". To the right of this section is a box titled "What Californians Say" with the text: "In surveys by State Parks, 72% of Californians say they walk to parks they most frequently use. This underscores the SCORP focus on the importance of nearby community parks, and is a key factor in how parks can help address health needs."

# Tools for Future Park Planning

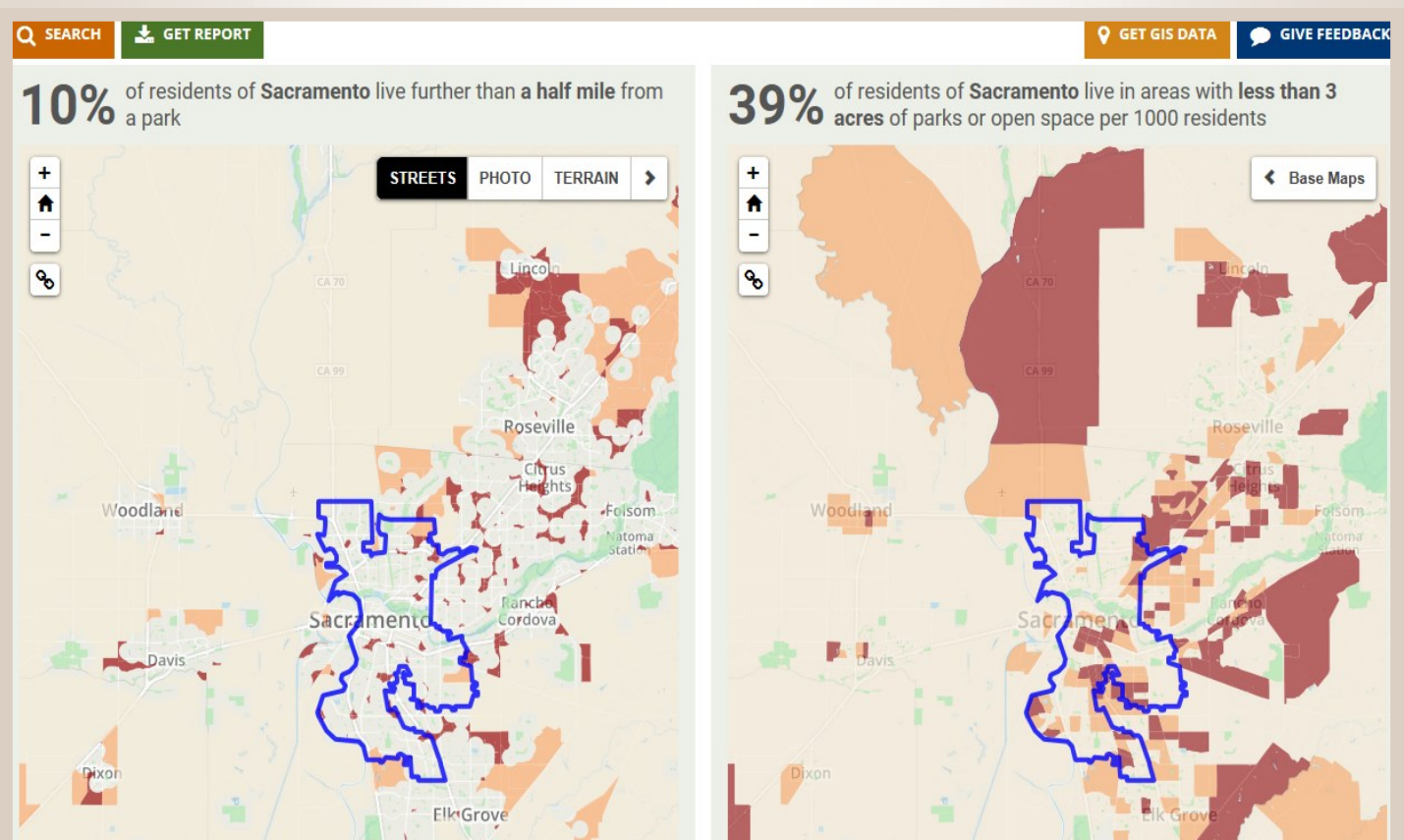
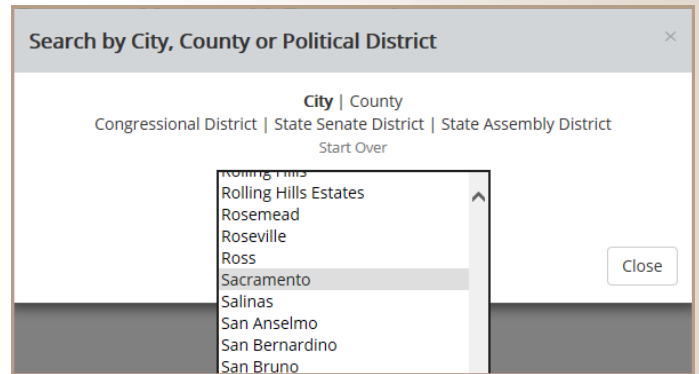
## Park Access Tool

The Park Access Tool (PAT) - Provides an **overview** of park acreage and income thresholds for each city, county, and in legislative and congressional districts.

PAT also allows a user to identify neighborhoods lacking a park within a half mile. You can also generate a report.

Simply click SEARCH and select the location to start.

[www.parks.ca.gov/SCORP/Tools/ParkAccess](http://www.parks.ca.gov/SCORP/Tools/ParkAccess)





# Tools for Future Park Planning

## Community Fact Finder

**Community FactFinder:**

Click the pin, then select an area on the map.

OR enter an address below and click Go!

6000 61st street, sacramento **Go!**

**Results for Sacramento (County: Sacramento)**

Latitude, longitude	38.5179356, -121.4336523
Total Population	6,169
Youth Population	1,637
Senior Population	681
Median Household Income	\$32,966
Per Capita Income	\$14,458
People in Poverty	1,677
Households without Access to a Car	343
Parks total area	2.51 acres
Parks per 1000 people	0.41 acres

The Community Fact Find provides **site specific** information including ratio of park acres per 1,000 residents and other demographic data within a half mile radius surrounding the selected site, for any area of the state.

The system can also generate a report.

Simply enter the location and click Go!

[www.parks.ca.gov/SCORP/Tools/CommunityFactFinder](http://www.parks.ca.gov/SCORP/Tools/CommunityFactFinder)

**California State Parks** Project ID: 680  
**Community FactFinder Report** Coordinates: 38.5179, -121.4336  
 Date: 08/30/2016

This is your SCORP project report for the site you have defined. Please refer to your **Project ID** above in any future communications about the project.

PROJECT AREA STATISTICS	
County:	Sacramento
City:	Sacramento
Total Population:	6169
Youth Population:	1637
Senior Population:	681
Households Without Access to a Car:	342.5
Number of People in Poverty:	1677
Median Household Income:	\$32,966
Per Capita Income:	\$14,458
Park Acres:	2.51
Park Acres per 1,000 Residents:	0.41

**PROJECT AREA MAP**

**REPORT BACKGROUND**

The project statistics have been calculated based on half mile radius around the point location selected. Only park acres within the project area's half mile radius are reported.

Population and people in poverty are calculated by determining the percent of any census block groups that intersect with the project area. The project area is then assigned the sum of all the census block group portions. An equal distribution in census block groups is assumed. Rural areas are calculated at a census block level to improve results.

Median household and per capita income are calculated as a weighted average of the census block group values that fall within the project area.

More information on the calculations is available on [the methods page](#).

**Demographics**—American Community Survey (ACS) 5-year estimates 2008-2012; Decennial 2010 Census; the margin of error (MOE) was not analyzed.

**Parks**—California Protected Areas Database 2014b CFF adjusted (11/2014) - more information at <http://www.CALands.org>. Parks and park acres area based on best available source information but may not always contain exact boundaries or all parks in specific locations. Parks are defined further in the 2015 SCORP (pg. 4).

Users can send updated information on parks to [SCORP@parks.ca.gov](mailto:SCORP@parks.ca.gov)

SCORP Community FactFinder is a service of the California Department of Parks and Recreation [www.parks.ca.gov](http://www.parks.ca.gov)

Created by GreenInfo Network in consultation with CA Dept. of Parks and Recreation [www.greeninfo.org](http://www.greeninfo.org)

# The Art of Community Based Planning

## Project Design Priorities

Recognizing that neighborhood residents are experts about their community needs, meetings to promote a group dynamic where participants build upon the ideas of one another, were encouraged through the program.

The SPP guidelines prioritized these community based planning goals:

1. **Meet with residents near the project:** Hold at least five park design meetings with residents at convenient locations near the project site for residents lacking transportation. Also schedule meetings at various times for employment and family schedules.
2. **Invite residents to provide their ideas:** Use at least three methods to invite residents and consider language, cultural and physical needs, as well as child care and food. Encourage neighborhood youth, seniors, and parents to be a part of the design process so that the needs of different generations are met.
3. **Engage in dialogue during meetings:** Ask residents to identify their needs and design ideas focusing on these key factors:
  - a. Selection of the recreation features and their design.
  - b. Most practical location of features within the park.
  - c. Safe public use and park beautification such as landscaping or art.

## Example

“**Sidewalk meetings**” at the proposed project site worked well. Applicants or a partnering community group set up a banner, easels, and tables on a Saturday morning and knocked door-to-door inviting residents to join neighbors to discuss park design ideas. They also invited motorists and pedestrians.

# Empowering Residents to Create Healthier Communities

- ◆ Project designs represent creative ideas that reflect the residents' needs and interests.
- ◆ Local agencies told OGALS that residents' ideas were effective and they will replicate this process for other projects.
- ◆ Residents said that they felt more connected with their local government and their neighbors.

The SPP guidelines prioritized native drought tolerant landscaping, bio-swales, water and energy conservation, and use of recycled materials. Projects that included additional sustainable techniques were more competitive.

- ◆ SPP projects are transforming blighted land into vibrant, healthy places.
- ◆ Artistic details on pathways, walls, and seating areas were encouraged to reflect and celebrate the history and diverse cultures of surrounding neighborhoods.
- ◆ Each park became a unique representation of its surrounding community through this design process.



Sidewalk meeting at project site to design Whitewater Park in Cathedral City  
Photo by [MVR Consulting](#)

Outcomes

Sustainable Park Design

Environmental Justice and Creating a "Sense of Place"

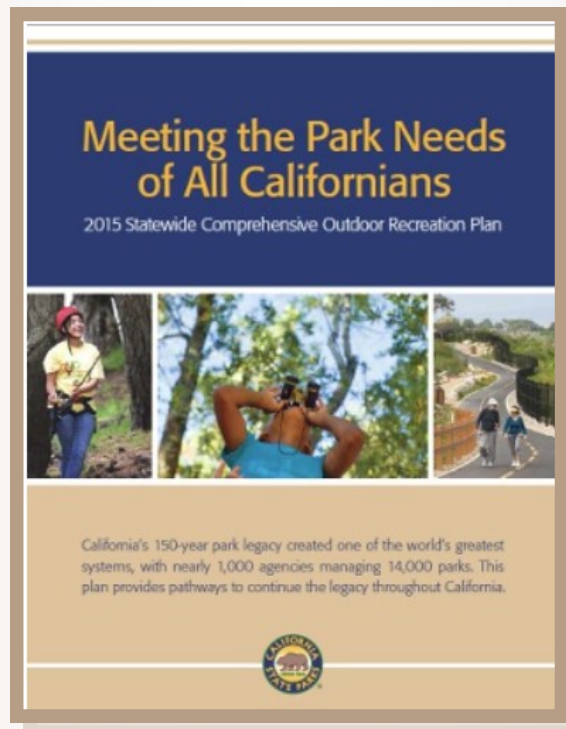



# Office of Grants and Local Services (OGALS)

OGALS addresses California's diverse recreational, cultural and historical resource needs by developing grant programs, administering funds, offering technical assistance, building partnerships and providing leadership through quality service.

- ◆ Since 1964, **over 7,400 parks** have been created or improved through 20,000 grants administered by OGALS.
- ◆ Since 2000, OGALS has administered **over \$2 billion in grants**, including the Statewide Park Development and Community Revitalization Program (SPP).

OGALS also develops the Statewide Comprehensive Outdoor Recreation Plan ([SCORP](#)).



 [DOWNLOAD REPORT](#)

This report was created by:  
California Department of Parks and Recreation  
External Affairs  
Office of Grants and Local Services  
1416 9th Street, Suite 918  
Sacramento, CA 95814  
Main: (916) 653 7423  
[www.parks.ca.gov/GRANTS](http://www.parks.ca.gov/GRANTS)